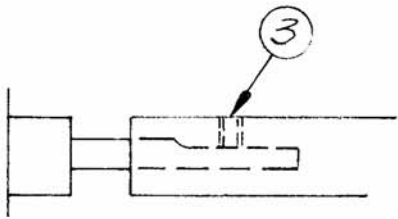
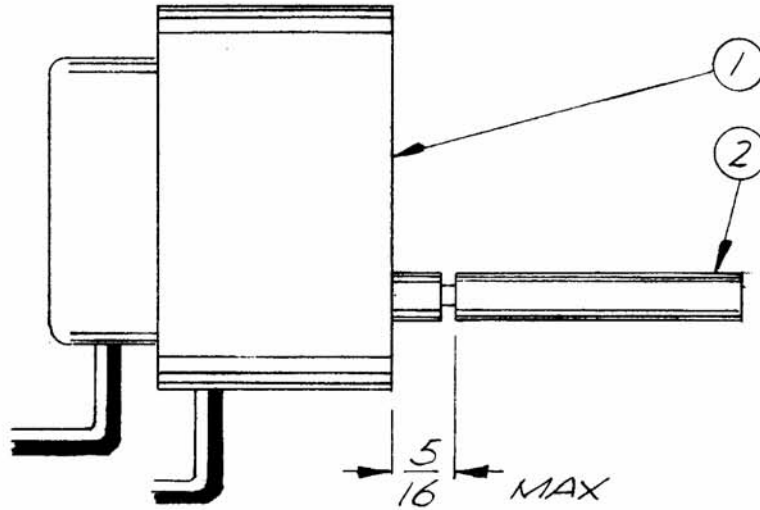


APPLICATION			REVISIONS						
QTY	MODEL USED ON	ASS'Y NO.	LTR	DESCRIPTION	DATE	E.M.N.NO	DRAFT	CHKD	APPD
1	AX5130	BMA466	Ø	ORIG RELEASE FOR PROD	9/3/71		CV		



1. INSERT EASTMAN 910 INTO OPENING OF ITEM 2.
2. INSERT ITEM 2 ON MOTOR SHAFT.
3. SCREW DOWN SET SCREW TO FLAT ON MOTOR SHAFT.
4. GRIND SET SCREW FLUSH TO ITEM 2.

REQ'D	ITEM	PART NUMBER	DESCRIPTION	SYM.
X	4	EAST. 910	EASTMAN, ADHESIVE	
1	3	SLHC0440SP3	SCREW, ALLEN	
1	2	PM 1498	SHAFT	
1	1	MO-136	MOTOR, REVERSIBLE	

UNLESS OTHERWISE SPECIFIED DIMENSIONS ARE IN INCHES AND INCLUDE CHEMICALLY APPLIED OR PLATED FINISHES

DECIMALS	FRACTIONS	TOLS.	ANGLES
.X ± .05	1/64		
.XX ± .01			0° -30'
.XXX ± .005			

MATERIAL

FINISH

F. BUDETTI

LIST OF MATERIAL

FINAL APPROV. <i>FB</i>	DATE 9/30/71
MECH. DES. <i>WJL</i>	DATE 8/30/71
ELEC. DES. <i>R. J. J.</i>	DATE 8-30-71
CHECKED	DATE
DRAWN <i>GE</i>	DATE 8/27/71

THE TECHNICAL MATERIEL CORP.
MAMARONECK, NEW YORK

MOTOR, ASSY.

NOTICE TO PERSONS RECEIVING THIS DRAWING
THE TECHNICAL MATERIEL CORPORATION claims proprietary right in the material disclosed hereon. This drawing is issued in confidence for engineering information only and may not be reproduced or used to manufacture anything shown hereon without permission from THE TECHNICAL MATERIEL CORPORATION to the user. This drawing is loaned for mutual assistance and is subject to recall at any time.

SIZE	CODE IDENT. NO.	DWG NO.	ISSUE
A	82679	A 4890	Ø
SCALE		SHEET	OF