

5

4

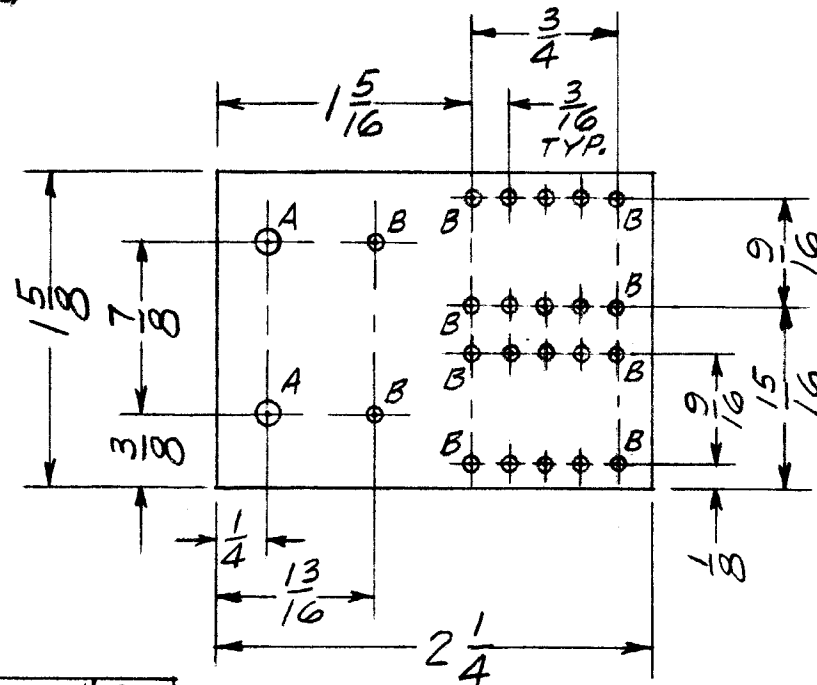
3

2

1

MACHINING

A

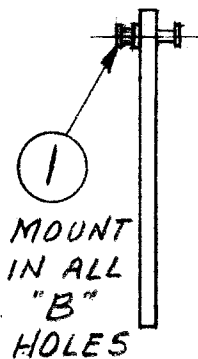


HOLE	DESCRIPTION	REQ
A	9/64 DIA.	2
B	#49 DR (0.730 DIA)	22

MATERIAL
1/16 THK. XXXP PHENOLIC, NATURAL

REVISIONS

ZONE	LTR	DESCRIPTION	DATE	E.M.N.NO	DRAFT	CHKD	APPD
		ORIGINAL RELEASE	5/1/73		CS		



1
MOUNT
IN ALL
"B"
HOLES

SUB-ASS'Y

22	1	TE168-2-B	TERM., STUD-FEED-THRU	B
REQ'D	ITEM	PART NUMBER	DESCRIPTION	SYM.

LIST OF MATERIAL

2	CMRA-4	
QTY / UNIT	MODEL USED ON	ASS'Y NO.

APPLICATION

	CODE	
--	------	--

NOTICE TO PERSONS RECEIVING THIS DRAWING
THE TECHNICAL MATERIEL CORPORATION claims proprietary right in the material disclosed hereon. This drawing is issued in confidence for engineering information only and may not be reproduced or used to manufacture anything shown hereon without permission from THE TECHNICAL MATERIEL CORPORATION to the user. This drawing is loaned for mutual assistance and is subject to recall at any time.

UNLESS OTHERWISE SPECIFIED
DIMENSIONS ARE IN INCHES
AND INCLUDE CHEMICALLY APPLIED
OR PLATED FINISHES

DECIMALS	FRACTIONS	TOLS.	ANGLES
.X ± .05	1/64		
.XX ± .01			
.XXX ± .005			0° - 30'

MATERIAL

FINISH

FINAL APPROVAL	DATE
<i>DOB</i>	5/9/73
MECH. DES.	DATE
ELECT. DES.	DATE
CHECKED	DATE
DRAWN	DATE
<i>D.A.C.</i>	5-27-69

THE TECHNICAL MATERIEL CORP.
MAMARONECK, NEW YORK

TERMINAL BOARD, ASS'Y

SIZE	CODE IDENT. NO.	DWG NO.	ISSUE
B	82679	A 4829	1

SCALE SHEET OF