

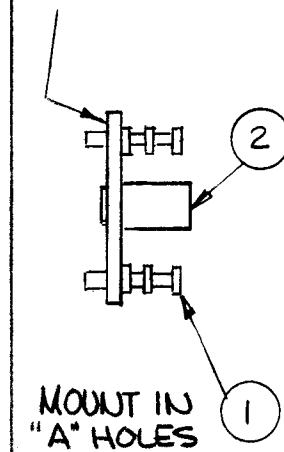
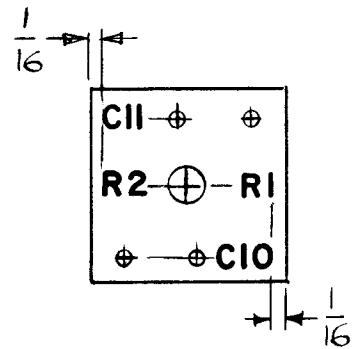
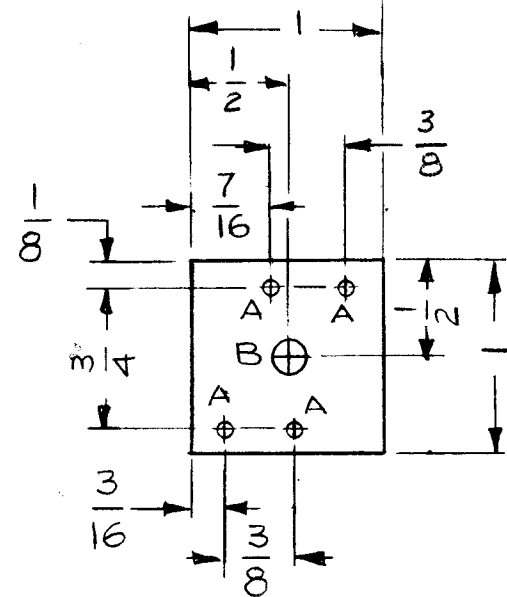
REVISIONS

ZONE	LTR	DESCRIPTION	DATE	E.M.N.NO	DRAFT	CHKD	APPD
	X	EXP. RELEASE	6-14-68		G.D.L		
	X1	IT.10 ADDED, IT 3&4 REV.	7-31-68				
	Ø	ORIG. RELEASE FOR PROD	11-13-68	Ø	R.G.		

HOLE:
 A - .081 DIA 4 REQ.
 B - .189 DIA 1 REQ.

FINISH: FUNGUS PROOFING
 PER TMC SPEC. S113

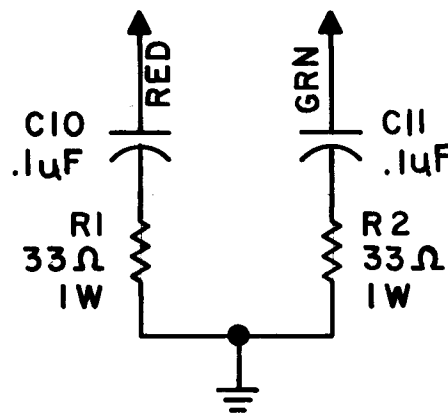
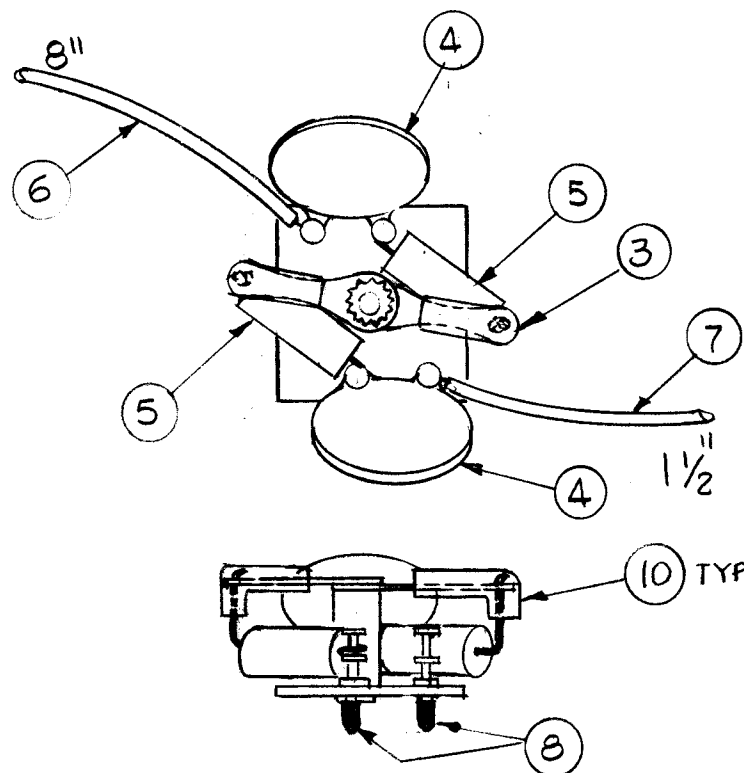
MARKING ON THIS SIDE



MARKING - A4735-2
 LETTERING: 1/8 HIGH BLACK
 GOTHIC.
 MARKING PROCESS: AS PER
 TMC SPECIFICATION S727

MACHINING - A4735-1
 MATERIAL: 1/16 EPOXI GIO

SUB-ASSY
 A4735-3



SCHEMATIC

REQ'D	ITEM	PART NUMBER	DESCRIPTION	SYM.
X	10	PX830-12-1	INS. SLVG ELECT	
X	9	BS100	SOLDER TIN ALLOY	
X	8	PX830-18-1	INSULATION, SLVG, SHRINK	
1 1/2	7	MWC24(7)U5	WIRE, ELEC, INS.	
8 1/2	6	MWC24(7)U2	WIRE, ELEC, INS.	
2	5	RC32GF330J	RESISTOR, FXD, COMP.	R1, R2
2	4	CC100-32	CAPACITOR, FXD, CER.	CII, CIO
2	3	TE104-2	TERMINAL LUG, LKG	
1	2	TE108-11	NUT, PLN, CLINC	B
4	1	TE127-8	TERMINAL, STUD	A

S. DE MARCO LIST OF MATERIAL

FINAL ASSY - A4735-4

1	RTTD-4	BMA251
QTY / UNIT	MODEL USED ON	ASS'Y NO.
APPLICATION		
	CODE A	S401-451

NOTICE TO PERSONS RECEIVING THIS DRAWING
 THE TECHNICAL MATERIEL CORPORATION claims proprietary right in the material disclosed hereon. This drawing is issued in confidence for engineering information only and may not be reproduced or used to manufacture anything shown hereon without permission from THE TECHNICAL MATERIEL CORPORATION to the user. This drawing is loaned for mutual assistance and is subject to recall at any time.

UNLESS OTHERWISE SPECIFIED DIMENSIONS ARE IN INCHES AND INCLUDE CHEMICALLY APPLIED OR PLATED FINISHES	FINAL APPROVAL S. De Marco MECH. DES. R. UZZO	DATE 11/13/68 11-12-68
DECIMALS .X ± .05 .XX ± .01 .XXX ± .005	FRACTIONS 1/64 ANGLES 0° - 30'	ELECT. DES. CHECKED DRAWN G.D.L.
MATERIAL	DATE 6-14-68	DATE 6-14-68
FINISH		

THE TECHNICAL MATERIEL CORP.
 MAMARONECK, NEW YORK

TERMINAL BOARD ASSY
 AC FILTER

SIZE B	CODE IDENT. NO. 82679	DWG NO. A4735	ISSUE Ø
SCALE 1:1		SHEET OF	