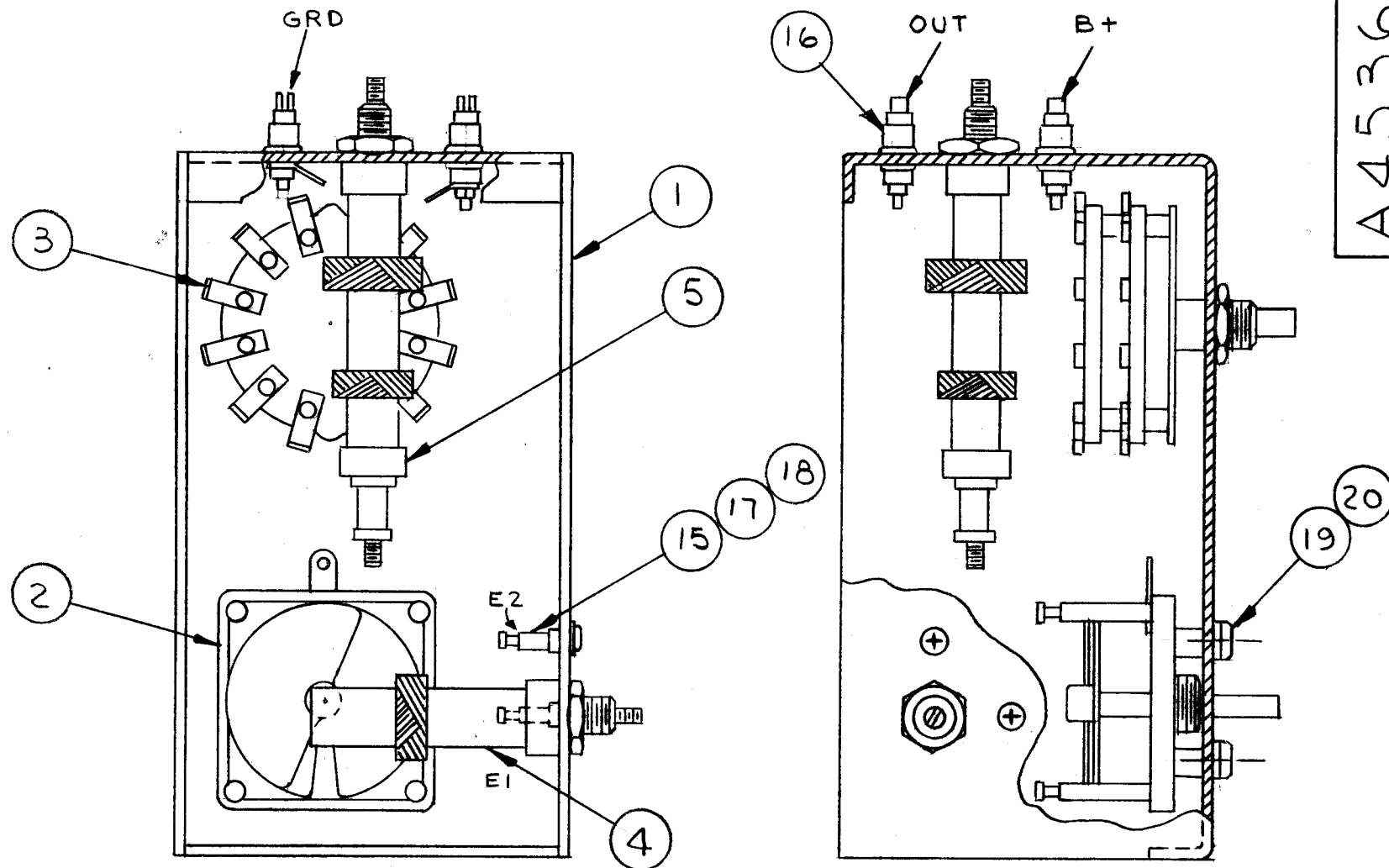


**NOTE**  
FOR ASSEMBLY & WIRING OF COMPONENTS NOT SHOWN IN ASSEMBLY BELOW, SEE SCHEMATIC.



A4536

**REVISIONS**

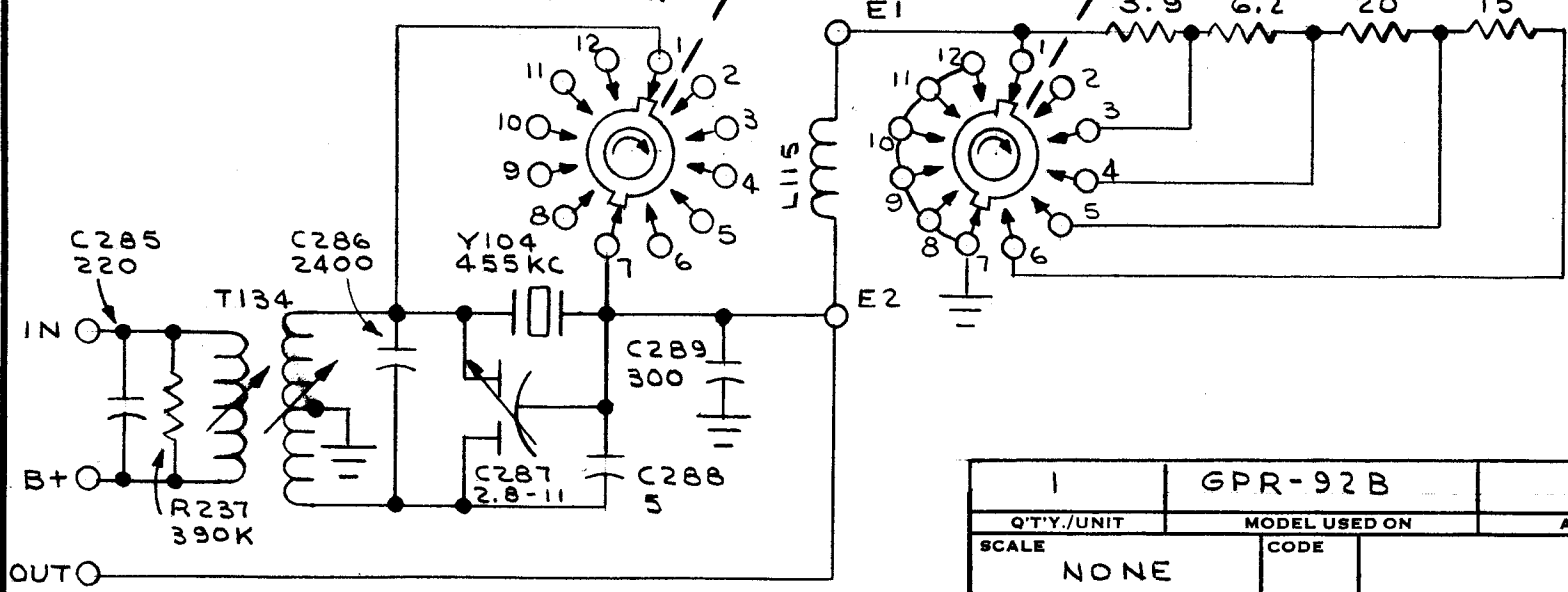
SYM	DESCRIPTION	DATE	E.M.N. NO.	DRAFT	CHKD	APPD
X	EXP RELEASE	11/1/66		JL		
Ø	ORIGINAL RELEASE FOR PRODUCTION	11/19/66	Ø	RME		<i>JL</i>

2	20	LWI06MRN	LOCKWASHER, INTERNAL	
2	19	SCBP0632BN6	SCREW, MACHINE	
2	18	LWI02MRN	LOCKWASHER, INTERNAL	
2	17	SCBP0256BN3	SCREW, MACHINE	
4	16	TE101-1	TERM, FEED THRU, INS	
2	15	TE115-2	TERM, STUD, INS	
1	14	CM15CD50J03YY	CAPACITOR, FIXED, MICA	C288
1	13	CM30F242G03	CAPACITOR, FIXED, MICA	C286
1	12	CM15F301J03	CAPACITOR, FIXED, MICA	C287
1	11	RC20GF394J	RESISTOR, FIXED, COMP	R237
1	10	3R9J		R238
1	9	6R2J		R239
1	8	200J		R240
1	7	RC20GF150J	RESISTOR, FIXED, COMP	R241
1	6	CR102	CRYSTAL	Y104
1	5	A4515	TRANSFORMER, 1F	T134
1	4	A944	COIL	L115
1	3	SW289	SWITCH, ROTARY	S112
1	2	CT105-1	CAPACITOR, VARIABLE	C287
1	1	MS 6024	CHASSIS, FILTER	

**DIAGRAM, SCHEMATIC**

S112A (REAR)

S112B



**NOTES**

1	GPR-92B	
Q'TY./UNIT	MODEL USED ON	ASSY. NO.
SCALE	CODE	
NONE		
THE CONTENTS OF THIS DRAWING ARE THE EXCLUSIVE PROPERTY OF THE TECHNICAL MATERIEL CORP. ITS UNAUTHORIZED USE OR REPRODUCTION IN WHOLE OR IN PART IS STRICTLY FORBIDDEN.		

REQ'D.	ITEM	PART NUMBER	DESCRIPTION	SYMBOL
--------	------	-------------	-------------	--------

**LIST OF MATERIAL**

MATERIAL		THE TECHNICAL MATERIEL CORP. MAMARONECK, NEW YORK			
FINISH		TITLE FILTER ASSEMBLY			
UNLESS OTHERWISE SPECIFIED DIMENSIONS ARE IN INCHES AND INCLUDE CHEMICALLY APPLIED OR PLATED FINISHES		DRAWN	DATE	FINAL APPROVAL	DATE
		JL	11/1/66	<i>[Signature]</i>	11/5/66
DECIMALS .X ± .05 .XX ± .01 .XXX ± .005		CHECKED	DATE	A4536	Ø
		<i>[Signature]</i>	11/2/66		
FRACTIONS ± 1/64 ANGLES ± 0° 30'		ELECT. DES.	DATE		
		<i>[Signature]</i>	11-1-66		
TOLERANCES		MECH. DES.	DATE	SHEET	REV. LTR.