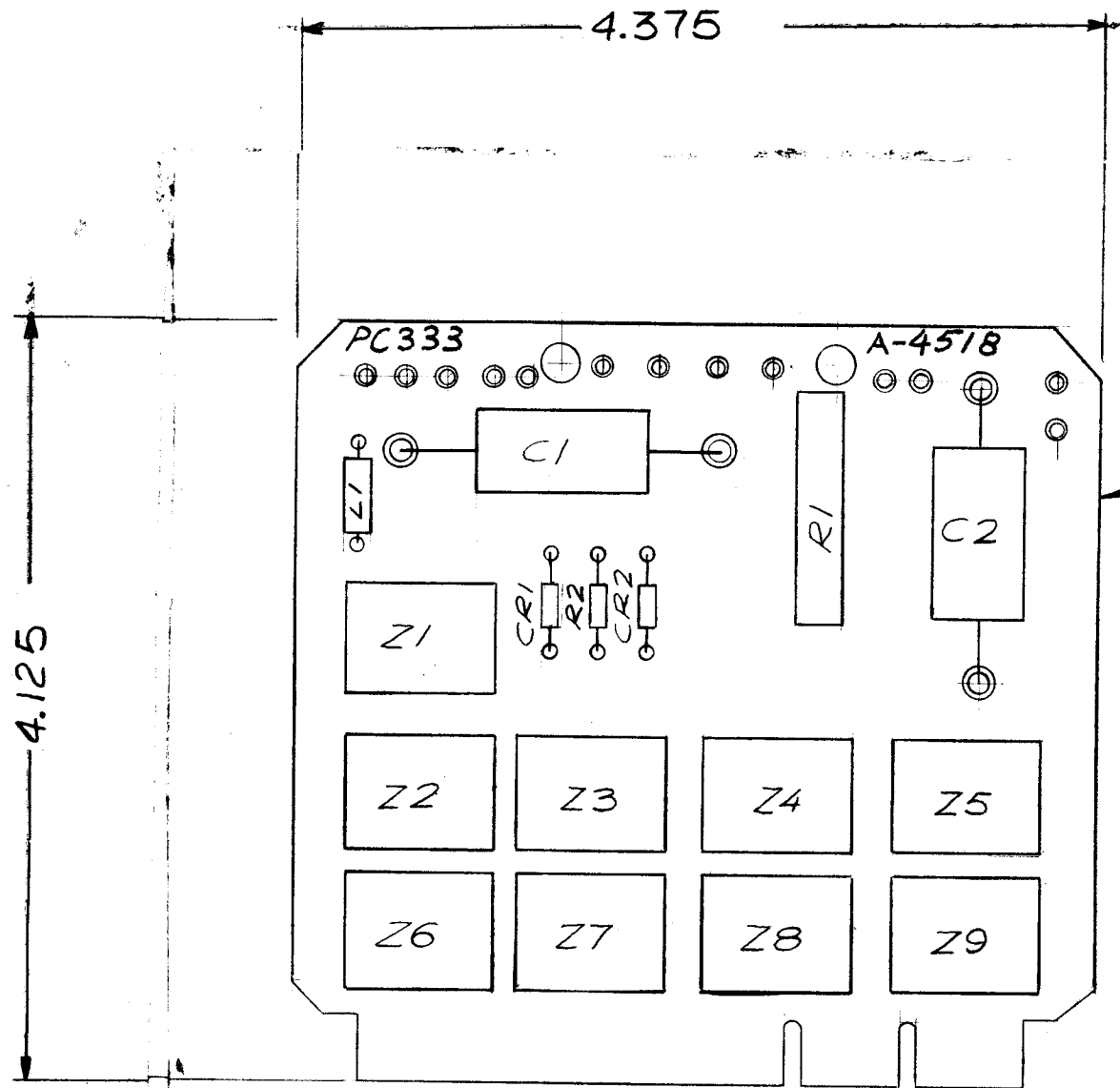
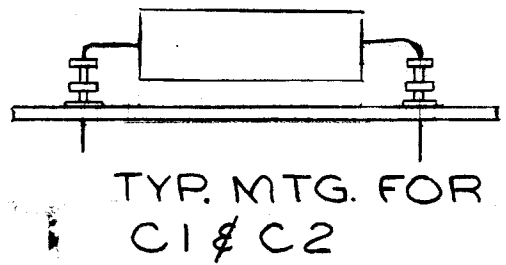


REVISIONS						
ZONE	LTR	DESCRIPTION	DATE	E.M.N.NO	DRAFT	CHKD APPD
	X	EXP. RELEASE	4-18-68			J.P. / S.D.
	B	ORIG RELEASE FOR PROD	11/5/68			C.V. / J.S.
A	A	REVISE & UPDATED	5-22-69	19441	GE	J.P. / S.D.



ASSEMBLY NOTES

1. TO MOUNT COMPONENTS INSERT LEAD THROUGH PLATED THRU-HOLES.
2. CAUTION: WHEN APPLYING HEAT AND SOLDER TO LEAD AND FOIL.
3. CLEAN AND INSPECT AS PER SPEC S676.
4. FOR ELECTRICAL COMPONENT PART NUMBERS REFER TO NPL A4518
5. USE SYMBOL NUMBERS FOR ASSEMBLY REFERENCE.

807
5-27

1	RTTD-()	
1	RTPH-()	
QTY / UNIT	MODEL USED ON	ASS'Y NO.
APPLICATION		
	CODE A	5401-451
<p>NOTICE TO PERSONS RECEIVING THIS DRAWING THE TECHNICAL MATERIEL CORPORATION claims proprietary right in the material disclosed hereon. This drawing is issued in confidence for engineering information only and may not be reproduced or used to manufacture anything shown hereon without permission from THE TECHNICAL MATERIEL CORPORATION to the user. This drawing is loaned for mutual assistance and is subject to recall at any time.</p>		

UNLESS OTHERWISE SPECIFIED DIMENSIONS ARE IN INCHES AND INCLUDE CHEMICALLY APPLIED OR PLATED FINISHES	
DECIMALS .X ± .05 .XX ± .01 .XXX ± .005	FRACTIONS 1/64 TOLS. ANGLES 0° .30'
MATERIAL	
FINISH	

1	1	PC333	PRINTED CIRCUIT BOARD	
REQ'D	ITEM	PART NUMBER	DESCRIPTION	SYM.
S. DE MARCO LIST OF MATERIAL				
FINAL APPROVAL S. De Marco		DATE 11/5/68	THE TECHNICAL MATERIEL CORP. MAMARONECK, NEW YORK	
MECH. DES. Z. Uzzo		DATE 11-2-68	PC333 ASS'Y SHIFT REGISTER	
ELECT. DES.		DATE	SIZE B	ISSUE A
CHECKED J.A. De		DATE 11/5/68	CODE IDENT. NO. 82679	DWG NO. A 4518
DRAWN J. Pachman		DATE 4-18-68	SCALE 1:1	SHEET OF