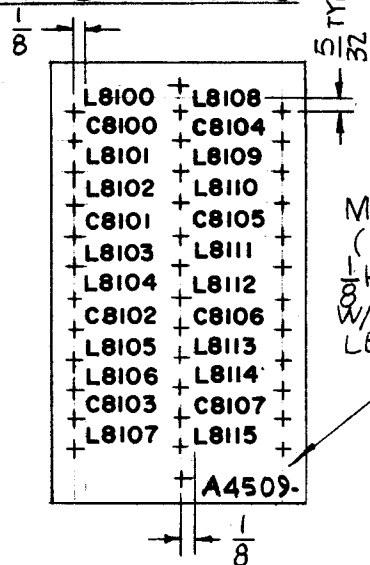


HOLES:
 A-.116 DIA. (36 REQ.)
 B-.189 DIA. (2 REQ.)
 MAT'L ~ 3/32 THICK, G11 EPOXY.
 A4509-1 (MACHINING)

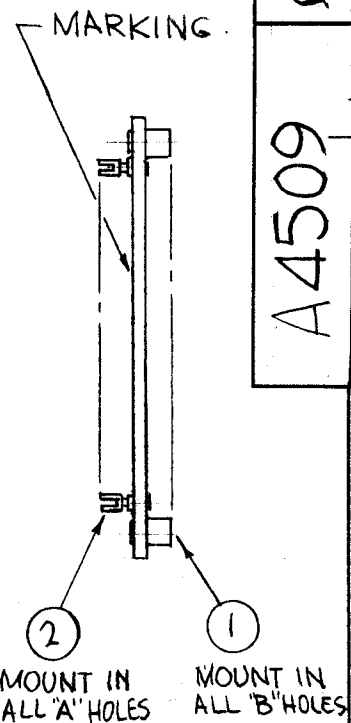
FUNGUS PROOFING PER TMC SPECIFICATION S-113 AFTER MARKING.



MARK TMC P/N (A4509-) 1/8 HIGH GOTHIC W/LATEST REV. LETTER.

MARKING PROCESS:
 AS PER TMC SPECIFICATION S-727.
 LETTERING: 1/8 HIGH BLACK GOTHIC,
 LOCATED AS SHOWN.

A4509-2 (MARKING)

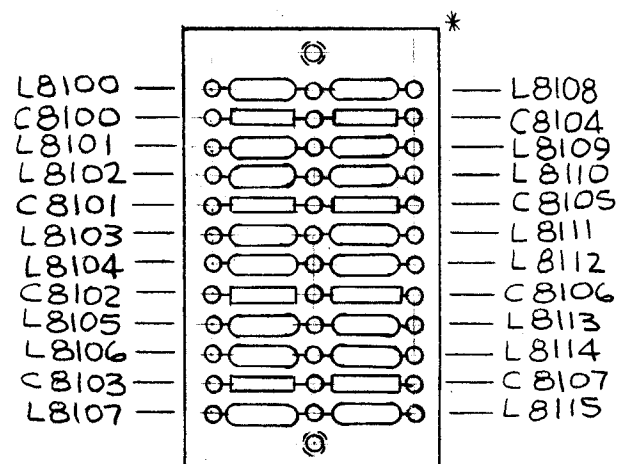


A4509-3 (SUB-ASS'Y)

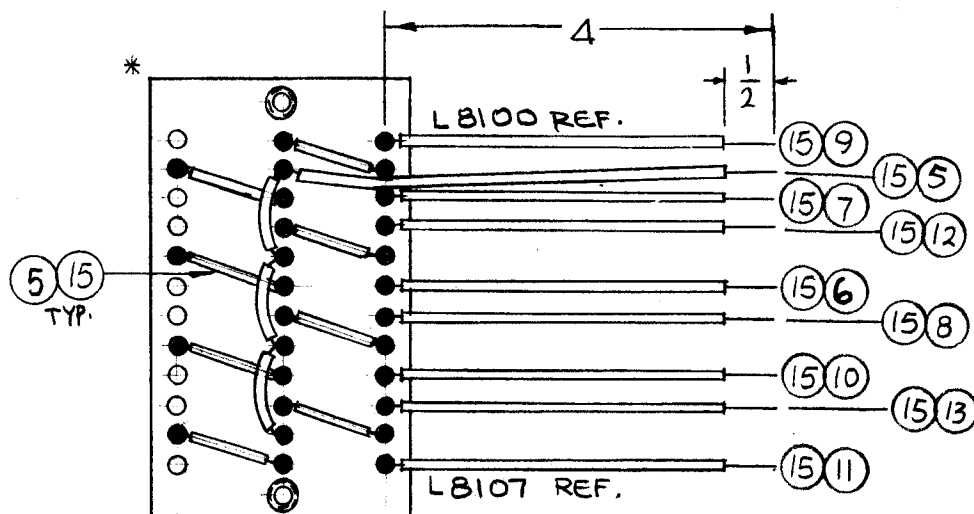
A4509

REVISIONS					
SYM	DESCRIPTION	DATE	E.M.N. NO.	DRAFT	CHKD APPD
X	EXP. RELEASE	9-30-66	X		
X1	PX104-0-034 DEL.; IT. 5 REVISED, 36 QTY ADDED	3-14-67	X1		
Ø	ORIGINAL RELEASE FOR PRODUCTION	3-27-67		RME	

X	15	WL100-7	WIRE, ELEC. BUSS	
X	14	BS100	SOLDER, TIN ALLOY	
	13	PX104-9-034	INS. SLVG ELEC.	
	12	-8		
	11	-7		
	10	-6		
	9	-5		
	8	-4		
	7	-3		
	6	-2		
X	5	PX104-1-034	INS. SLVG. ELEC.	
8	4	CM15F511J03	CAPACITOR, FIXED, MKA, DIELECTRIC	C8100 TO C8107
16	3	CL270-10	COIL, RF	L8100 TO L8115
36	2	TE109-2	TERMINAL STUD	A
2	1	TE108-2	NUT, PLAIN, CLINCH	B



TOP



BOTTOM

A4509-4 (FINAL ASS'Y)

○ - DENOTES NO SOLDER
 ● - DENOTES SOLDER.
 * - DENOTES SAME CORNER.

NOTES

1	RAK-111-2	
Q'TY./UNIT	MODEL USED ON	ASS'Y. NO.
SCALE 1:2	CODE A	S401-451 S401- S401-
THE CONTENTS OF THIS DRAWING ARE THE EXCLUSIVE PROPERTY OF THE TECHNICAL MATERIEL CORP. ITS UNAUTHORIZED USE OR REPRODUCTION IN WHOLE OR IN PART IS STRICTLY FORBIDDEN.		

REQ'D.	ITEM	PART NUMBER	DESCRIPTION	SYMBOL
F. BUDETTI LIST OF MATERIAL				
MATERIAL			THE TECHNICAL MATERIEL CORP. MAMARONECK, NEW YORK	
FINISH			TITLE TERMINAL BOARD ASS'Y	
UNLESS OTHERWISE SPECIFIED DIMENSIONS ARE IN INCHES AND INCLUDE CHEMICALLY APPLIED OR PLATED FINISHES			DRAWN	DATE 9-30-66
DECIMALS .X ± .05 .XX ± .01 .XXX ± .005			CHECKED	DATE
FRACTIONS ± 1/64 ANGLES ± 0° 30'			ELECT. DES.	DATE 20/1/67
TOLERANCES			MECH. DES.	DATE
			A4509	
			SHEET	
			REV. LTR.	