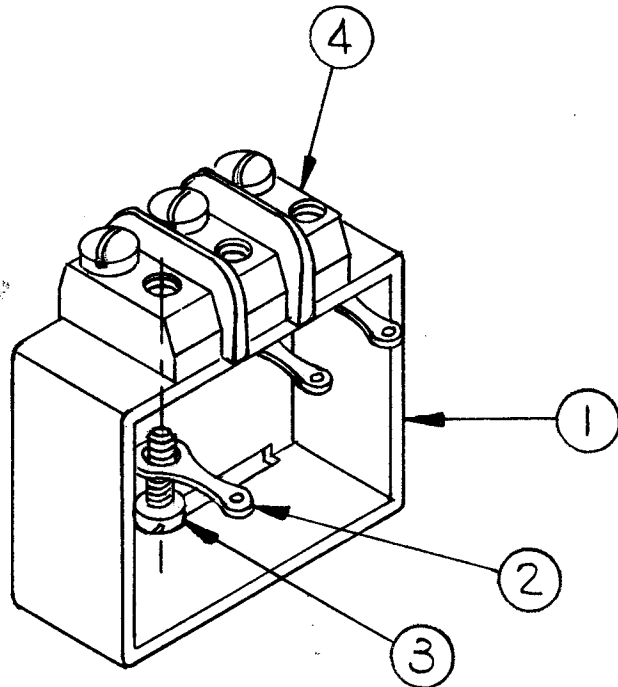


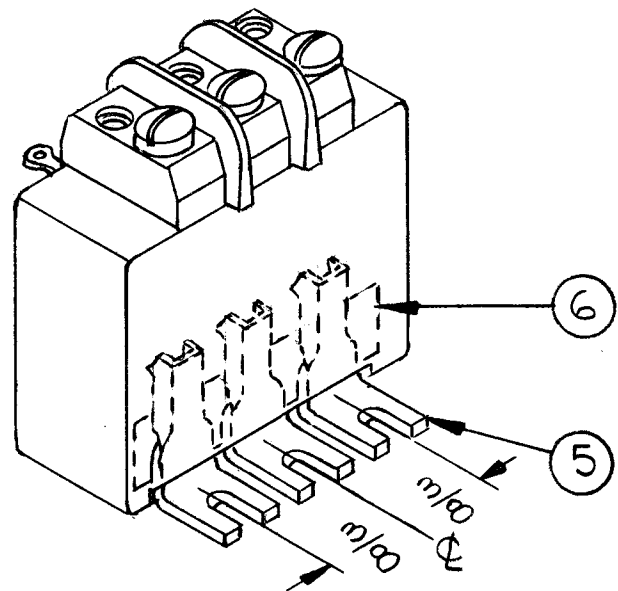
STEP-1

SEE MODIFICATION



1. ASSEMBLE ITEM ② TO INTERIOR, & ITEM ④ TO EXTERIOR OF CASE (ITEM-1) AS SHOWN & FASTEN WITH ITEM ③

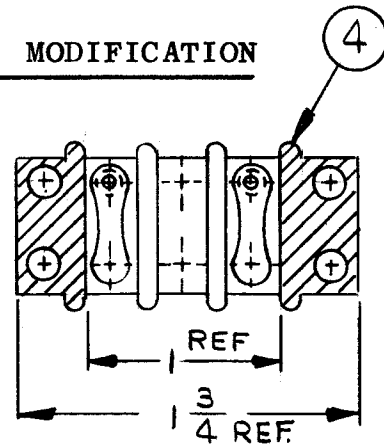
STEP-2



1. MOUNT ITEM ⑤ IN CASE & HOLD IN POSITION WITH TAPE ITEM ⑥ (NOTE: MAINTAIN 3/8 SPACING SHOWN)

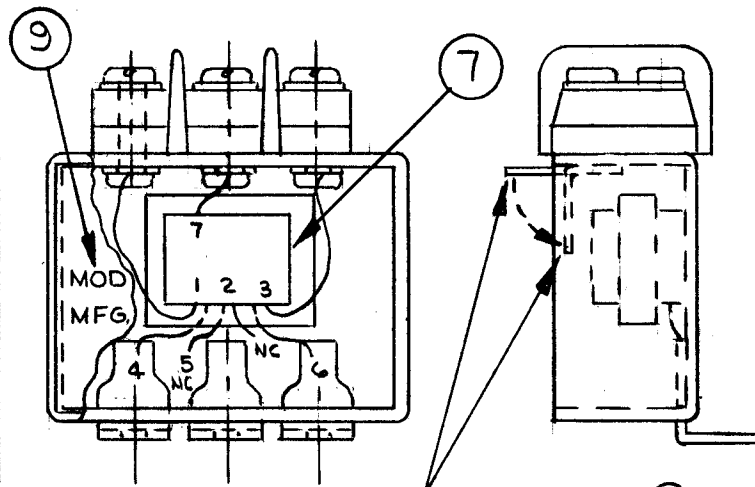
NOTES

ITEM ④ MODIFICATION



NOTE: REMOVE SHADED AREAS AS SHOWN.

STEP-3



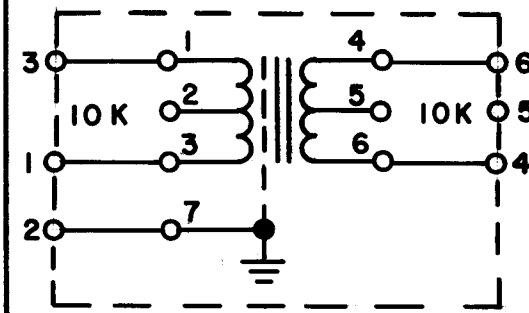
1. ASSEMBLE TRANSFORMER ITEM ⑦ IN CASE & SOLDER LEADS AS SHOWN. (NOTE: NO. 2 & 5 LEADS NO CONNECTION)
2. CAREFULLY BEND TERMINALS (ITEM-2) INTO CASE AS SHOWN & FILL CASE WITH POTTING COMPOUND ITEM ⑧.
3. PLACE ITEM ⑨ OVER POTTED END OF TRANSFORMER AS SHOWN.

A4498

REVISIONS

SYM	DESCRIPTION	DATE	E.M.N. NO.	DRAFT	CHKD	APPD
X	EXP. RELEASE	9/21/66		JL		
Ø	ORIGINAL RELEASE FOR PROD	10/5/66	Ø			JL

SCHEMATIC DIAGRAM



REQ'D.	ITEM	PART NUMBER	DESCRIPTION	SYMBOL
X	10	BS100	SOLDER, TIN ALLOY	
1	9	NP492	PLATE, IDENT-COML	
X	8	GL106	POTTING, COMPOUND	
1	7	TF 350	TRANSFORMER	
X	6	TA 105-1	TAPE, MASKING	
3	5	TE207-2	TERMINAL, LUG	
1	4	TM102-3	BARRIER STRIP	
3	3	SCBP0632BN5	SCREW, MACHINE	
3	2	TE104-1	TERMINAL, SOLDER LUG	
1	1	LD 2175/PX993	CASE, MACHINING	

LIST OF MATERIAL

MATERIAL		THE TECHNICAL MATERIEL CORP. MAMARONECK, NEW YORK			
FINISH		TITLE TF351 TRANSFORMER ASSEMBLY			
UNLESS OTHERWISE SPECIFIED DIMENSIONS ARE IN INCHES AND INCLUDE CHEMICALLY APPLIED OR PLATED FINISHES		DRAWN J. LESHINSKI	DATE 7/25/66	FINAL APPROVAL <i>[Signature]</i>	
DECIMALS .X ± .05 .XX ± .01 .XXX ± .005		CHECKED <i>[Signature]</i>	DATE	DATE 10/2/66	
FRACTIONS ± 1/64 ANGLES ± 0° 30'		ELECT. DES. <i>[Signature]</i>	DATE	DATE 9/21/66	
TOLERANCES		MECH. DES. <i>[Signature]</i>	DATE	DATE	
		SHEET		REV. LTR.	

1	TF351	
Q'TY./UNIT	MODEL USED ON	ASS'Y. NO.
SCALE	CODE	

THE CONTENTS OF THIS DRAWING ARE THE EXCLUSIVE PROPERTY OF THE TECHNICAL MATERIEL CORP. ITS UNAUTHORIZED USE OR REPRODUCTION IN WHOLE OR IN PART IS STRICTLY FORBIDDEN.