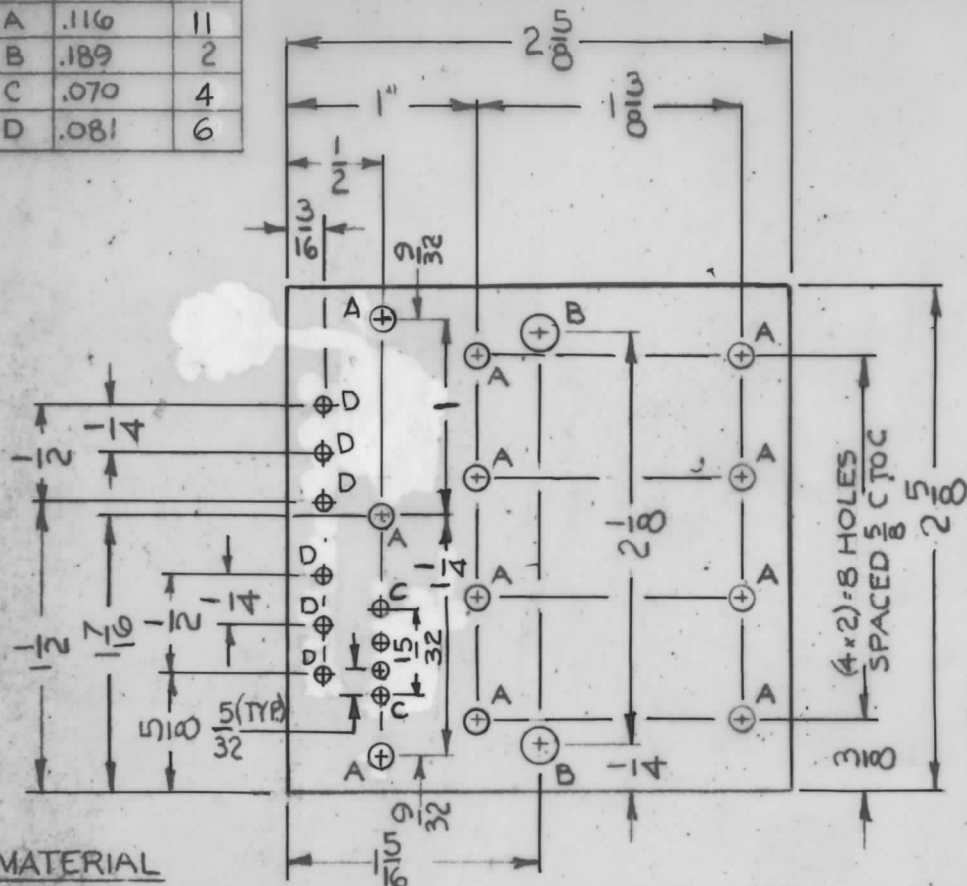


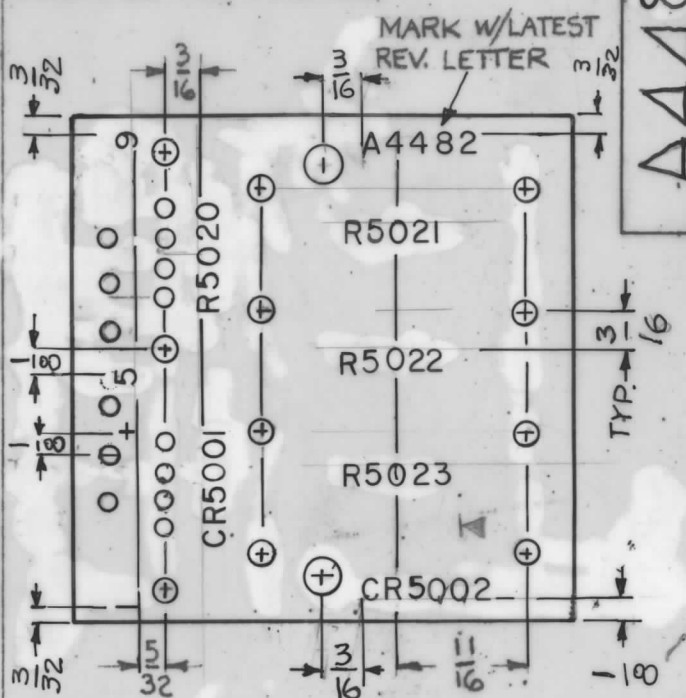
HOLE	DIAMETER	REQ.
A	.116	11
B	.189	2
C	.070	4
D	.081	6



MATERIAL
.093 THK.
G10 EPOXY GLASS

A4482-1 MACHINING

MARKING PROCESS:
AS PER TMC SPECIFICATION S-727,
LETTERING:
1/8 HIGH BLACK GOTHIC
LOCATED AS SHOWN.

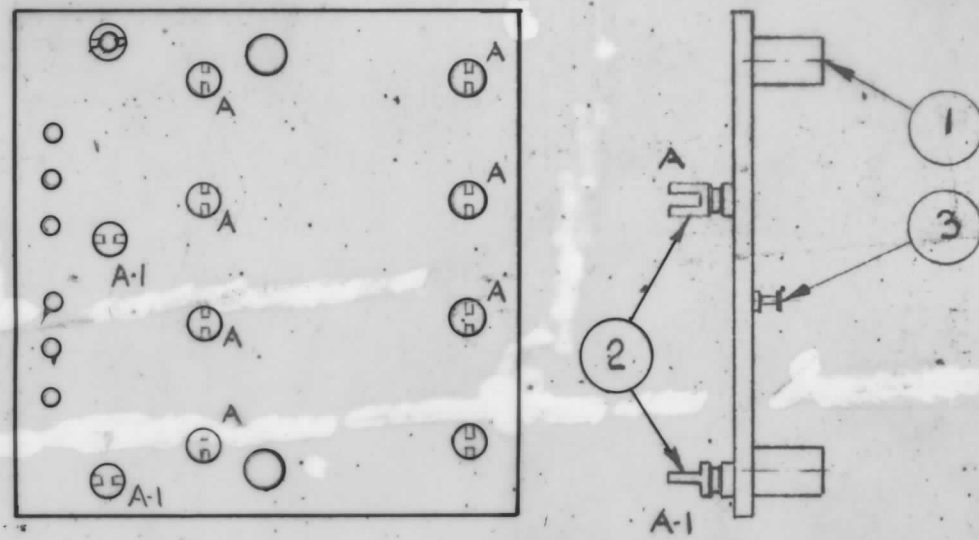


A4482

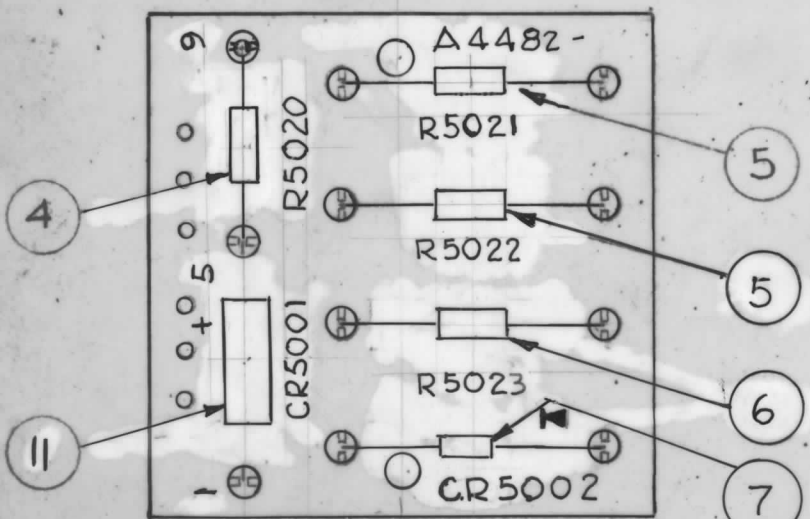
A4482-2 MARKING

REVISIONS

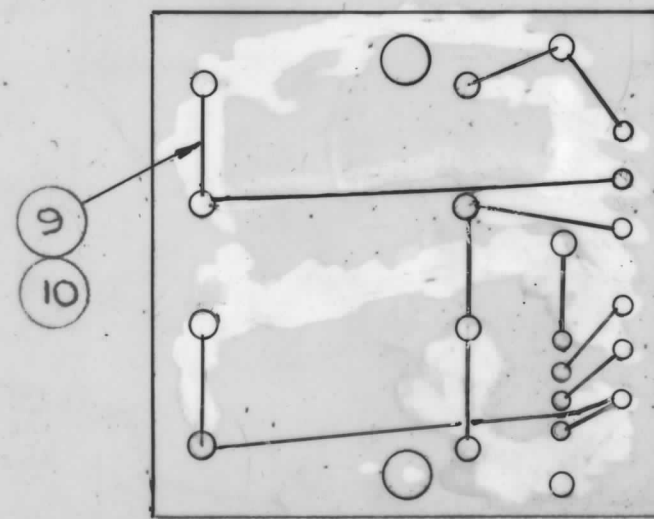
SYM	DESCRIPTION	DATE	E.M.N. NO.	DRAFT	CHKD	APPD
XI	ITEM WAS TE 108-3	8-12-66	A	JC		
Ø	ORIGINAL RELEASE FOR PRODUCTION	12-22-66	Ø	RME		



A4482-3 SUB-ASSY



TOP VIEW
A4482-4 FINAL ASSY



BOTTOM VIEW

REQ'D.	ITEM	PART NUMBER	DESCRIPTION	SYMBOL
1	11	DD 130-200-1.5	DIODE BRIDGE	CR5001
X	10	PX 104-1-034	INSULATED SLEEVING	
X	9	WL 100-7	WIR. ELECT. BUSS	
X	8	BS 100	SOLDER, TIN ALLOY	
1	7	1N4743	DIODE, ZENER	CR5002
1	6	RC 20GF103J	RESISTOR, FXD, COMP.	R5023
2	5	RC 20GF181J	RESISTOR, FXD, COMP.	R5021 R5022
1	4	RC 20GF100J	RESISTOR, FXD, COMP.	R5020
6	3	TE 127-3	TERMINAL, STUD	D
11	2	TE 109-2	TERMINAL, STUD	A
2	1	TE 108-2	NUT, PLN. CLINCH	B

EATON LIST OF MATERIAL

MATERIAL SEE DWG. TITLE THE TECHNICAL MATERIEL CORP. MAMARONECK, NEW YORK

FINISH UNLESS OTHERWISE SPECIFIED DIMENSIONS ARE IN INCHES AND INCLUDE CHEMICALLY APPLIED OR PLATED FINISHES. TITLE BOARD, POWER

UNLESS OTHERWISE SPECIFIED	DRAWN	DATE	FINAL APPROVAL	DATE
DIMENSIONS ARE IN INCHES AND INCLUDE CHEMICALLY APPLIED OR PLATED FINISHES.	G.D.L.	8-6-66	F.P. Eaton	12/22/66
	MECH. DES.	12-23-66	A4482	
	ELECT. DES.	12-23-66		
DECIMALS .X ± .05 .XX ± .01 .XXX ± .005	TOLERANCES	FRACTIONS ± 1/64 ANGLES ± 0° 30'	ML Allen 12/10/66	

NOTES

THE CONTENTS OF THIS DRAWING ARE THE EXCLUSIVE PROPERTY OF THE TECHNICAL MATERIEL CORP. ITS UNAUTHORIZED USE OR REPRODUCTION IN WHOLE OR IN PART IS STRICTLY FORBIDDEN.