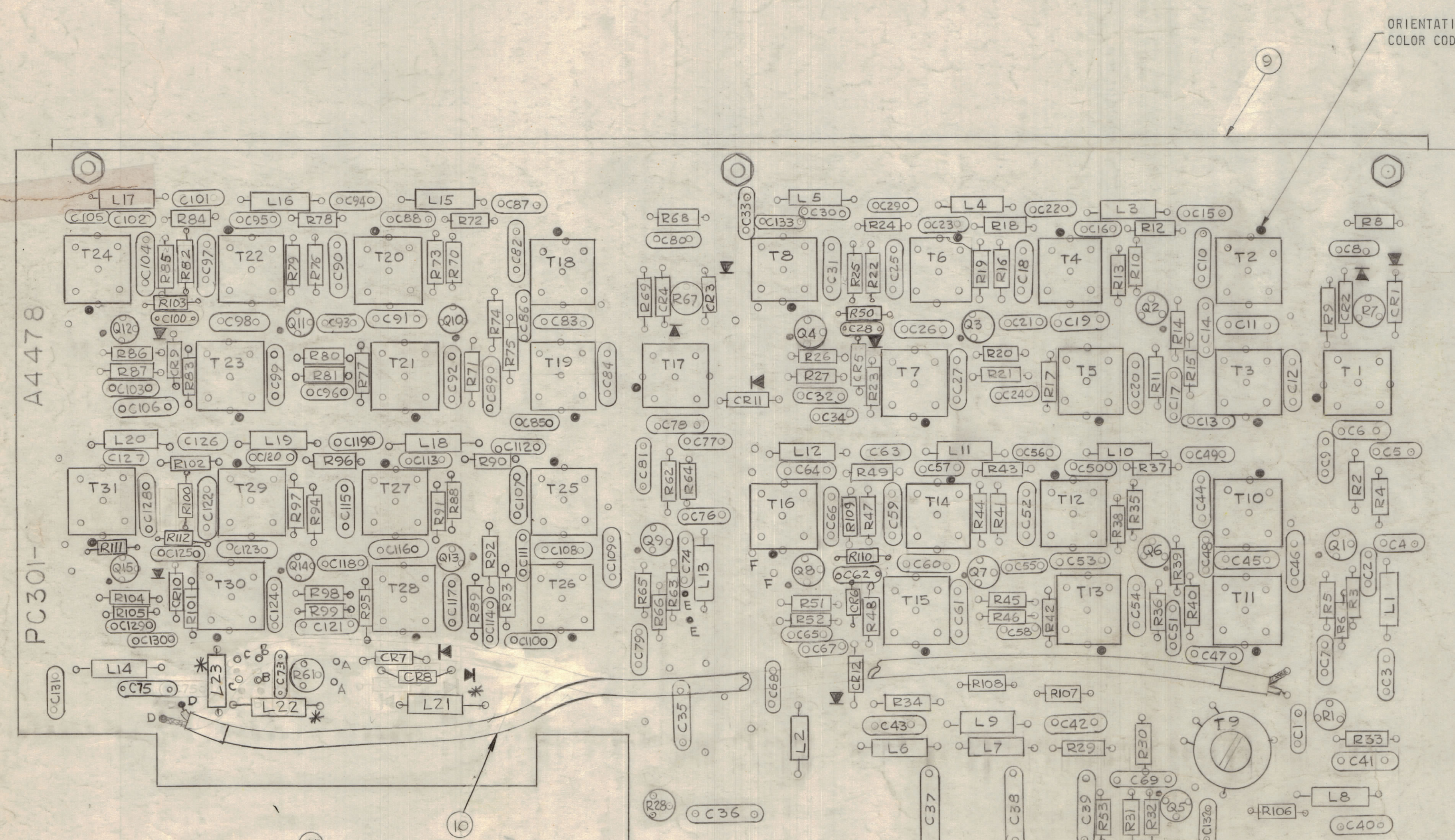


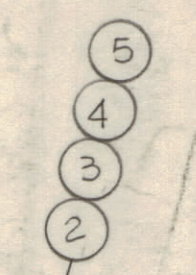
ASSEMBLY NOTES

1. TO MOUNT COMPONENTS, INSERT LEAD THROUGH PLATED THRU-HOLES.
2. BE CAUTIOUS WHEN APPLYING HEAT AND SOLDER TO LEAD AND FOIL.
3. CLEAN AND INSPECT AS PER SPEC S676.
4. FOR ELECTRICAL COMPONENT PART NUMBERS REFER TO NPL A4478
5. USE SYMBOL NUMBERS FOR ASSEMBLY REFERENCE.

REVISIONS						
ZONE	LTR	DESCRIPTION	DATE	DRFT	EMN	APPROVED
X		REVISED & UPDATED	12/13/67			
		ORIGINAL RELEASE FOR PROD				
		REVISED & UPDATED	1/3/68			
B		CHG. C128 TO C120				
C		L21, L22, L23 ADDED	1-12-71		2/606	



ORIENTATION OF TRANSFORMER
COLOR CODE DOT AS SHOWN



NOTE

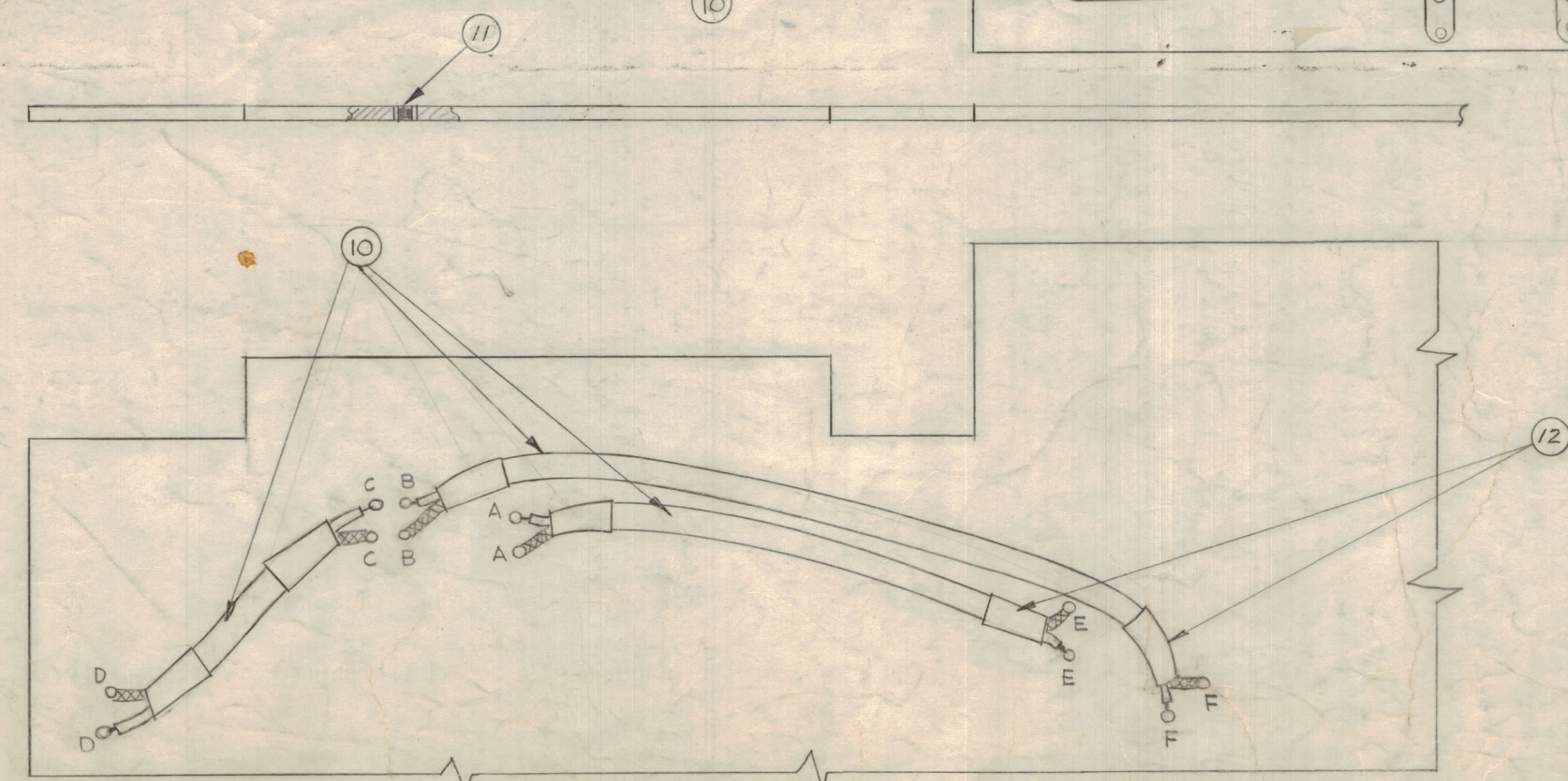
* L21, L22, L23 WILL NOT APPEAR FOR AN MMX-ZA SERIES (COMPONENTS EXIST ON CONNECTOR SIDE (JT10)).
L21, L22, L23 WILL BE PRESENT FOR AN MMX-ZB SERIES

△4478

△4478-1

MMX-ZA SERIES

MMX-ZB SERIES



QTY.	REQ.	ITEM	PART NO.	DESCRIPTION	SYMBOL
X	12		PX830-18-1	INSULATION, SLEEVING SHRINK	
X	11		BS100	SOLDER, TIN ALLOY	
XX	10		R6188/U	CABLE, RF	
1	9		MS6004/LD309A-9	STIFFENER, PRINTED CIRCUIT BOARD	
11	8		WA125-2	WASHER, NM	
1	7		NT137-0632	NUT, PLAIN HEXAGONAL, NYLON	
1	6		SC143-0632B10	SCREW, MACHINE NYLON	
3	5		NTH0440BN6	NUT, PLAIN HEXAGONAL	
3	4		LWEO4MRN	WASHER, LOCK, EXTERNAL	
3	3		FWO4HBN	WASHER, FLAT	
3	2		SCBP0440BN4	SCREW, MACHINE	
1	1		PC301	PRINTED CIRCUIT BOARD	

O. POSE		LIST OF MATERIAL	
FINAL APPROVAL	DATE	THE TECHNICAL MATERIEL CORP.	
MECH. DES.	DATE	MAMARONECK, NEW YORK	
ELECT. DES.	DATE	ASSY PRINTED CIRCUIT BD	
CHECKED	DATE	STEP GEN "A"	
DRAWN	DATE	SIZE	CODE IDENT. NO. / DWG NO.
		D	82679 / A4478
		SCALE	2:1
		SHEET	OF

CHG	VOX-7	BMA106
MMX-()		
QTY / UNIT	MODEL USED ON	ASS'Y NO.
APPLICATION		
CODE		
NOTICE TO PERSONS RECEIVING THIS DRAWING		
THE TECHNICAL MATERIEL CORPORATION claims proprietary right in the material disclosed hereon. This drawing is issued in confidence for engineering information only and may not be reproduced or used to manufacture anything shown hereon without permission from THE TECHNICAL MATERIEL CORPORATION to the user. This drawing is loaned for mutual assistance and is subject to recall at any time.		

TOLERANCES ON	
DECIMALS	FRACTIONS
.X ± .05	± 1/64
.XX ± .01	ANGLES
.XXX ± .005	± 0° - 30'