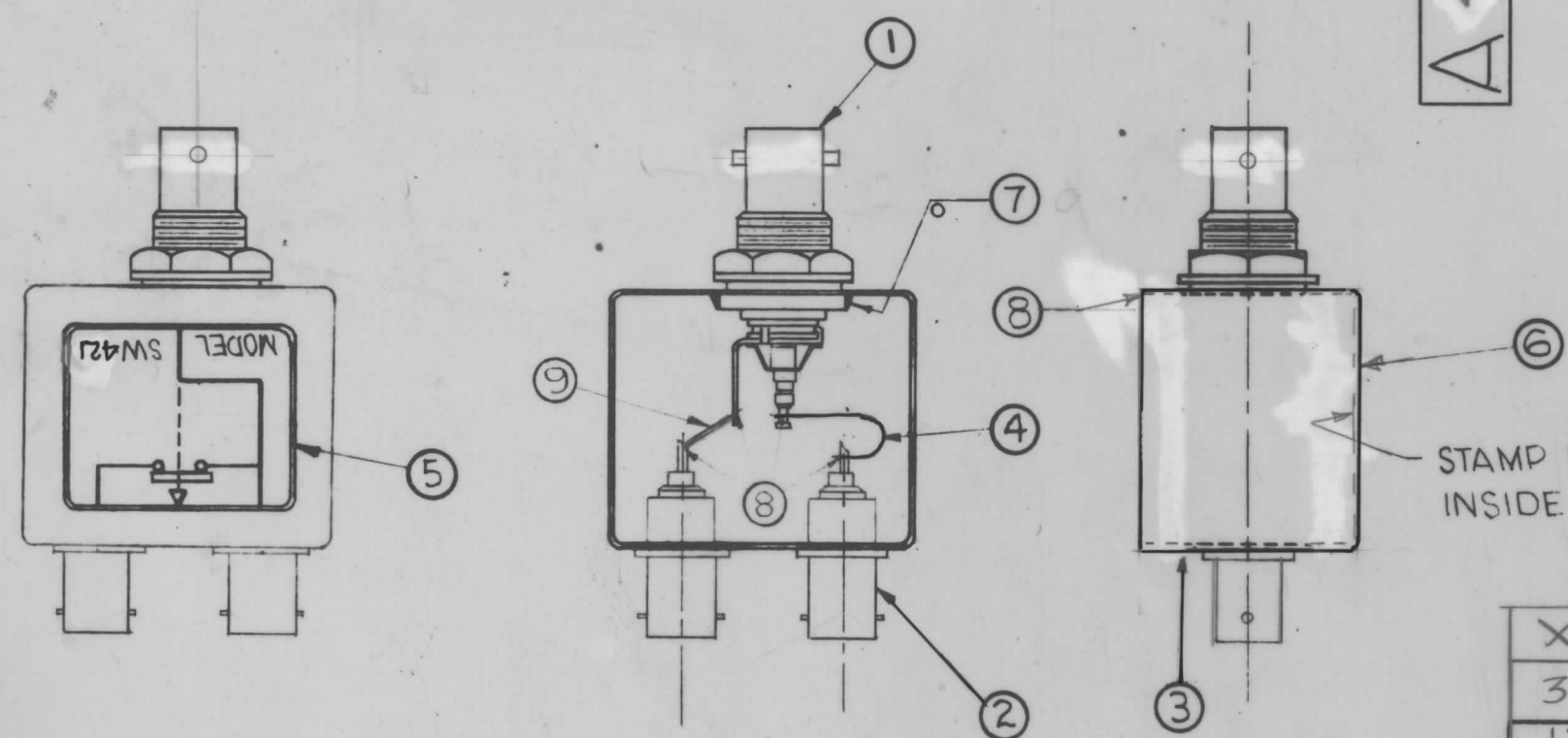


A 4460

REVISIONS

SYM	DESCRIPTION	DATE	E.M.N. NO.	DRAFT	CHKD	APPD
Ø	ORIGINAL RELEASE FOR PRODUCTION	5/23/66	Ø	CV		JLB



STAMP DATE ON INSIDE SURFACE

- INDUCTION HEATING EQUIPMENT SET AT:
AMPERES -
SECONDS -
- USE ITEM SEVEN (7) FOR MOUNTING ITEMS ONE (1) AND TWO (2).
- USE ITEM EIGHT (8) FOR SEALING COVER ITEM THREE (3).
- STRAP (ITEM 4) MUST BE KEPT AS FLEXIBLE AS POSSIBLE. DO NOT ALLOW SOLDER TO RUN OVER STRAP. LAY STRAP IN SO THAT IT CANNOT TOUCH CAN OR CONNECTOR BODIES.
- FINISH AS FOLLOWS:
S-114 - ZINC CHROMATE PRIMER
S-115 - TMC SMOOTH GREY ENAMEL
(DO NOT PAINT CONNECTOR BODIES.)
- AFFIX ITEM FIVE (5) TO FRONT AS SHOWN.
- AFFIX ITEM SIX (6) TO REAR AS SHOWN.

REQ'D.	ITEM	PART NUMBER	DESCRIPTION	SYMBOL
X	11	S-692	TEST PROCEDURE	
3	10	HB-125-1	CAPS, PROTECTIVE PLASTIC	
1/2"	9	WL-100-5	WIRE, BUSS-BAR #18	
X	8	BS-100	SOLDER, SOFT 361°	
X	7	BS-100-2	SOLDER, SOFT 450°	
1	6	NP-488	NAMEPLATE IDENTIFICATION (FOIL CAL.)	
1	5	NP-489-7	SCHEMATIC, DIAGRAM (FOIL CAL.)	
1	4	MS-2983-1	STRAP, FLEXIBLE CONNECTOR	
1	3	BX-154-4	CASE, COVER	
2	2	JJ-249	ADAPTOR, CONNECTOR	
1	1	JJ-325	ADAPTOR, CONNECTOR	

MATERIAL				FINISH			
SEE LIST				SEE NOTE NO.5			
UNLESS OTHERWISE SPECIFIED DIMENSIONS ARE IN INCHES AND INCLUDE CHEMICALLY APPLIED OR PLATED FINISHES				TITLE			
DECIMALS .X ± .05 .XX ± .01 .XXX ± .005				TOLERANCES ± 1/64 ANGLES ± 0° 30'			
DRAWN		DATE		FINAL APPROVAL		DATE	
CHECKED		DATE		A-4460		5/17/66	
ELECT. DES.		DATE		SHEET		REV. LTR.	
MECH. DES.		DATE		A-4460		Ø	

Q'TY./UNIT	MODEL USED ON	ASS'Y. NO.
DO NOT SCALE	SW-421	A-
THE CONTENTS OF THIS DRAWING ARE THE EXCLUSIVE PROPERTY OF THE TECHNICAL MATERIEL CORP. ITS UNAUTHORIZED USE OR REPRODUCTION IN WHOLE OR IN PART IS STRICTLY FORBIDDEN.		

Ø DENOTES SOLDER ALL AROUND
NOTES

ML 28 5/29/66