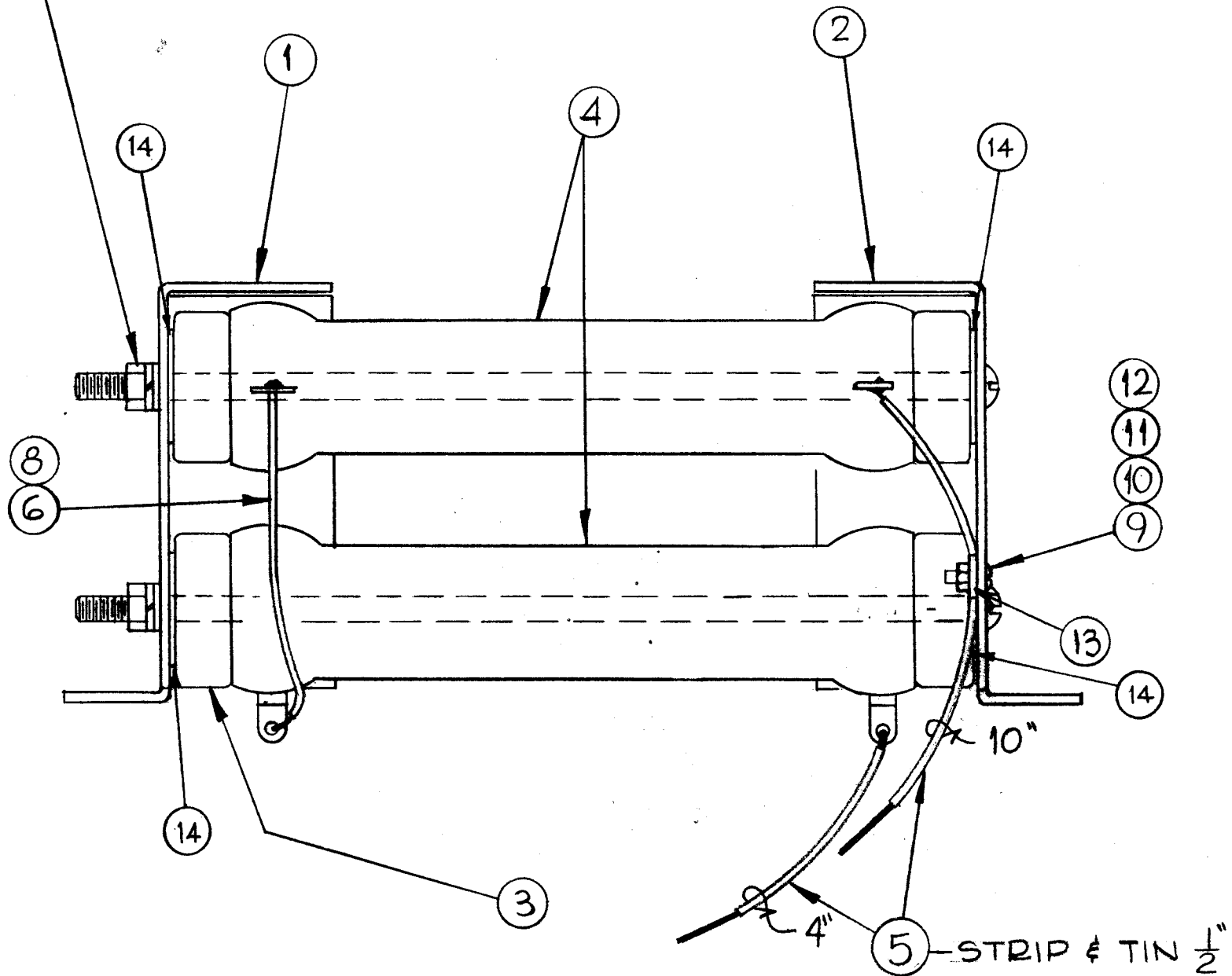


A4445 B

REVISIONS

SYM	DESCRIPTION	DATE	E.M.N. NO.	DRAFT	CHKD	APPD
Ø	ORIGINAL RELEASE FOR PRODUCTION	3-16-66	Ø	WJW		
A	IT 5 WAS 2". IT 6 WAS 2". IT 8, 9, 10, 11, 12 & 13 ADDED IT 6 RELOCATED	4-1-66	16049	WJW	<i>[Signature]</i>	<i>[Signature]</i>
B	IT 14 ADDED	12-13-66	17410	RME	<i>[Signature]</i>	<i>[Signature]</i>

FLAT WASHER, SPLIT LOCKWASHER & NUT - P/O ITEM 3



REQ'D.	ITEM	PART NUMBER	DESCRIPTION	SYMBOL
	4	14	WA109-56	WASHER, FIBER
	1	13	CU102-3	CLAMP, "G" TYPE
	1	12	NTH0632BN8	NUT, HEX
	1	11	LWE06MRN	LOCKWASHER, EXT.
	1	10	FW06HBN	WASHER, FLAT
	1	9	SCBP0632BN5	SCREW, MACHINE
	3"	8	PX104-1-042	INSULATION SLEEVING, ELECT
	X	7	BS100	SOLDER, TIN ALLOY
	3"	6	WL100-5	WIRE, ELEC, BUSS
	14"	5	WI12G-1	WIRE, ELEC, HV
	2	4	RW105-37	RESISTOR, FIXED, WIRE WOUND, 50W
	2	3	NS124-2	INSULATOR, RESISTOR MTG.
	1	2	MS4895-2	BRACKET, MTG., RESISTOR
	1	1	LD2063/MS4895-1	BRACKET, MTG., RESISTOR

LIST OF MATERIAL

MATERIAL	THE TECHNICAL MATERIEL CORP. MAMARONECK, NEW YORK			
FINISH	TITLE ASSEMBLY, RESISTOR			
UNLESS OTHERWISE SPECIFIED DIMENSIONS ARE IN INCHES AND INCLUDE CHEMICALLY APPLIED OR PLATED FINISHES		DRAWN H. AUSTIN	DATE 3-15-66	FINAL APPROV <i>[Signature]</i>
		CHECKED <i>[Signature]</i>	DATE 3-15-66	DATE 3/16/66
		ELECT. DES. <i>[Signature]</i>	DATE 3-15-66	
		MECH. DES.	DATE	
		A4445		B.
		SHEET		REV. LTR.

1	PSP-350 B	
Q'TY./UNIT	MODEL USED ON	ASS'Y. NO.
SCALE	CODE	
THE CONTENTS OF THIS DRAWING ARE THE EXCLUSIVE PROPERTY OF THE TECHNICAL MATERIEL CORP. ITS UNAUTHORIZED USE OR REPRODUCTION IN WHOLE OR IN PART IS STRICTLY FORBIDDEN.		

NOTES