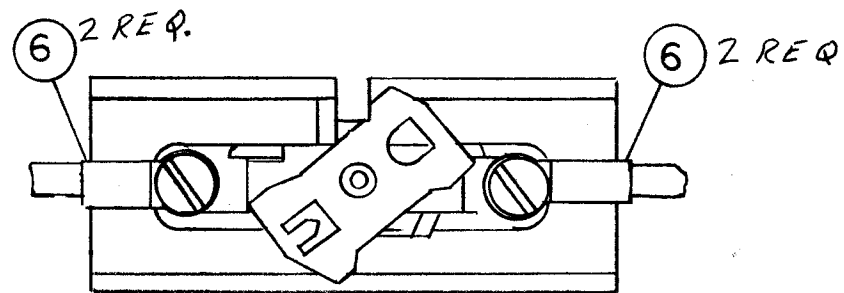
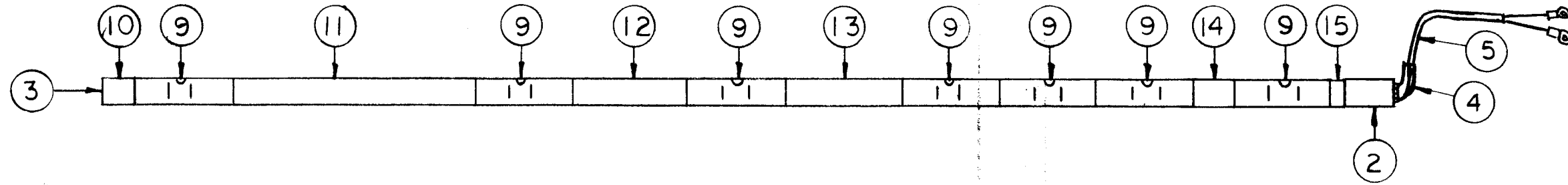


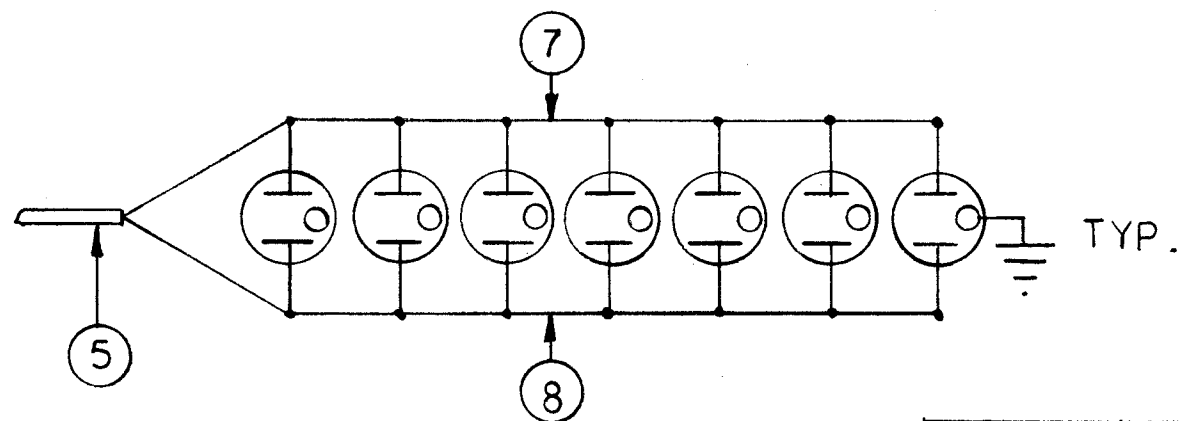
REVISIONS

SYM	DESCRIPTION	DATE	E.M.N. NO.	DRAFT	CHKD	APPD
Ø	ORIGINAL RELEASE FOR PRODUCTION	12/8/65			file	



HOOK UP OF ITEM 9

REQ'D.	ITEM	PART NUMBER	DESCRIPTION	SYMBOL
1	15	PO-163-0.562	COVER, CONNECTOR STRIP	
1	14		1.094	
1	13		3.625	
1	12		3.312	
1	11		8.187	
1	10		0.937	
7	9	JJ-294	GROUNDING RECEPTACLE	
	8	MWC12-19 U9	WIRE, ELEC	
	7	MWC12-19 U0	WIRE, ELEC	
26	6	TE-155-34168	LUG, INSULATED CRIMP	
1	5	CA-588-4	CABLE, AC POWER	
1	4	CU-110	CONNECTOR, 90°	
1	3	PO-161	END FITTING, BLANK	
1	2	PO-162	END FITTING, CABLE ENTRY	
1	1	MS-4144	AC STRIP CHANNEL	



SCHEMATIC DIAGRAM

NOTES

1	RAK-106	A-4081
Q'TY./UNIT	MODEL USED ON	ASSEMBLY NO.
SCALE NONE	CODE	
THE CONTENTS OF THIS DRAWING ARE THE EXCLUSIVE PROPERTY OF THE TECHNICAL MATERIEL CORP. ITS UNAUTHORIZED USE OR REPRODUCTION IN WHOLE OR IN PART IS STRICTLY FORBIDDEN.		

LIST OF MATERIAL				
MATERIAL		THE TECHNICAL MATERIEL CORP. MAMARONECK, NEW YORK		
FINISH		TITLE AX 528 ASSEMBLY AC POWER STRIP		
UNLESS OTHERWISE SPECIFIED DIMENSIONS ARE IN INCHES AND INCLUDE CHEMICALLY APPLIED OR PLATED FINISHES		DRAWN I.J.	DATE	FINAL APPROV. [Signature]
DECIMALS .X ± .05 .XX ± .01 .XXX ± .005		CHECKED [Signature]	DATE 12/8/65	DATE 12/8/65
FRACTIONS ± 1/64 ANGLES ± 0° 30'		ELECT. DES. [Signature]	DATE	REV. LTR. Ø
TOLERANCES		MECH. DES. [Signature]	DATE	SHEET