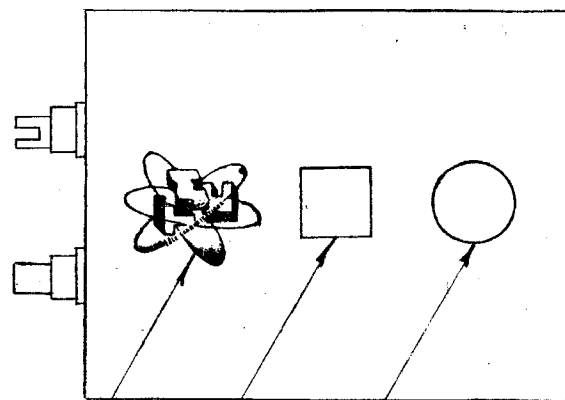
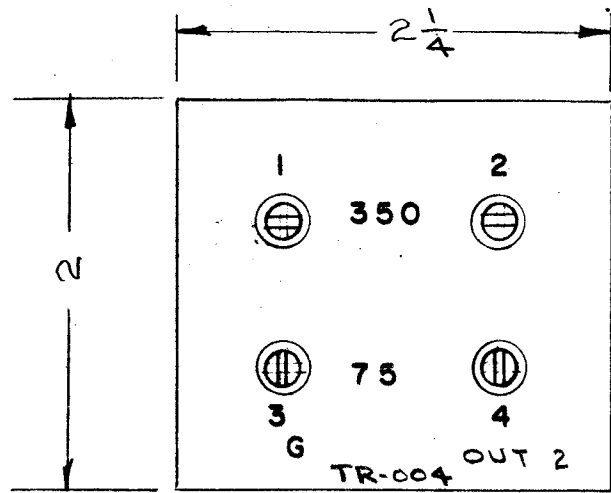


IF IT IS FOUND DESIRABLE TO CHANGE ANY TOLERANCE OR OTHER DETAIL SPECIFIED ON THIS DRAWING NOTIFY THE PURCHASER PROMPTLY.

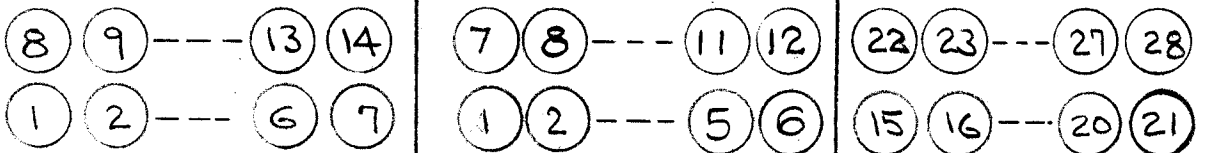
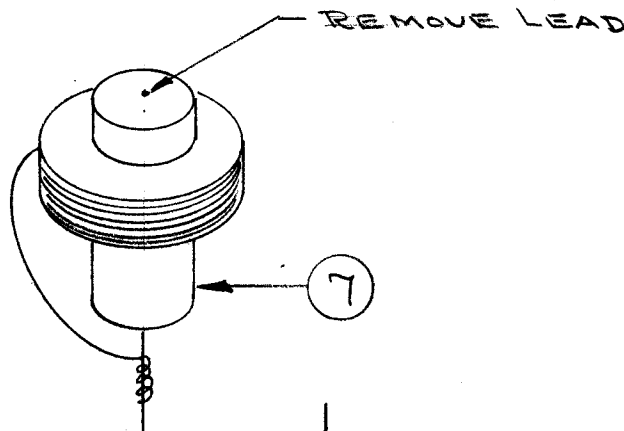
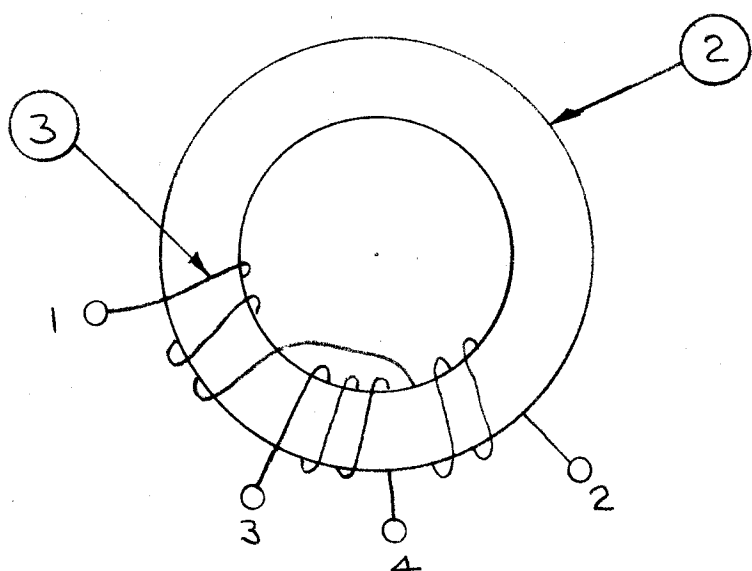
MAXIMUM ALLOWABLE TOLERANCES HAVE BEEN DETERMINED AND DEVIATIONS WILL BE CAUSE FOR REJECTION. REMOVE ALL BURRS AND SHARP EDGES

METAL STAMP BEFORE PAINTING, 1/8 HIGH BLACK GOTHIC AFTER PAINTING.

A-496 F



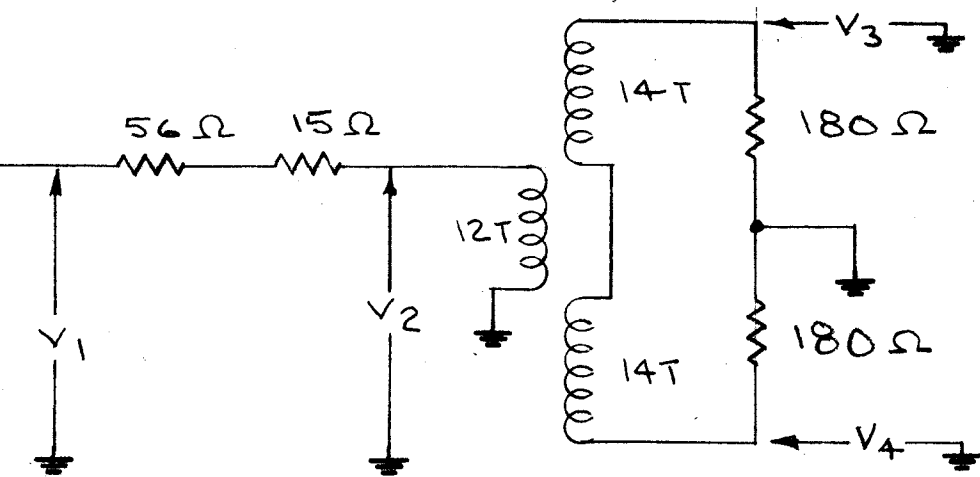
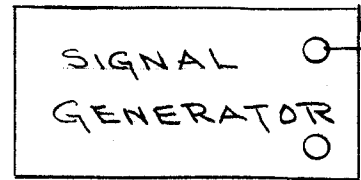
APPROVAL STAMP  
INSPECTION STAMP  
TMC INSIGNIA



1/2 350 Ω winding      75 Ω winding      1/2 350 Ω winding

FINISH SPEC.

S-114 ZINC CHROMATE PRIMER  
S-115 SMOOTH GREY ENAMEL



f kc	R F VOLTS			
	V <sub>1</sub>	V <sub>2</sub>	V <sub>3</sub>	V <sub>4</sub>
100	1.0	.46	.51	.49
400	1.0	.5	.58	.52
1600	1.0	.53	.53	.53

HP VTVM ± 10%

**NOT TO BE RELEASED W/O AUTHORIZATION**  
AUTH. BY.....  
DATE:.....

REQ.	ITEM	PART NO.	DESCRIPTION	SYMBOL
1	7	CN-100-3	CAPACITOR	
1	6	NP-117	TMC INSIGNIA	
X	5	GL-106	POTTING COMPOUND	
X	4	BS-100	SOLDER, SOFT	
X	3	WI-102-9	WIRE	
1	2	CI-104-A	CORE	
1	1	BX-106	CASE, TRANSFORMER	

ISSUE	ITEM	CHANGED FROM	DATE	CN. NO.	DRAFTS	CHECKER	ENG. APP.
F	1	1600 KC V3 WAS .6 ±10% ADDED TO HP VTVM	6/16/54	11561	A.M.	@	MM
E	1	75 Ω WINDING REARRANGED	3-12-57	5	SC.	16	ARB
D	2	ITEM 7 ADDED					
C	1	ITEM 5 WAS GL-100	6/11/56	A	OWS	JAL	ARB
B	1	STAMPING CLARIFIED	5/12/55	3	JAL	ESS	JDL
A	1	FINISH SPECS. ADDED	11/11/54	2	JAL	ESS	ARB
A	1	LEG POS. CHANGED	11/13/54	1	JAL	ESS	ARB

TOLERANCES		SCALE:
ALL OTHERS	DEC. DIM. ± FRAC. DIM. ± ANGULAR DIM. ±	DRILL, PUNCH, COMMERCIAL STOCK SIZES AND MANUFACTURERS TOLERANCES ARE NOT INCLUDED.

TR-004	222		8/7/53
MODEL	PROJECT NO.	ASSY. NO.	DATE

REG.	ITEM	PART NO.	DESCRIPTION	SYMBOL
THE TECHNICAL MATERIEL CORP. MAMARONECK, NEW YORK				
TRANSFORMER-100-1000 KC				
TR-004				
TYPE & TEMPER		JAL	ARB	ARB
HEAT TREAT. SPEC.		CS.D.	ARB	
SEE NOTE		CHECKED Supersedes AEM634 AMM66		FINAL APPROVAL A-496 F