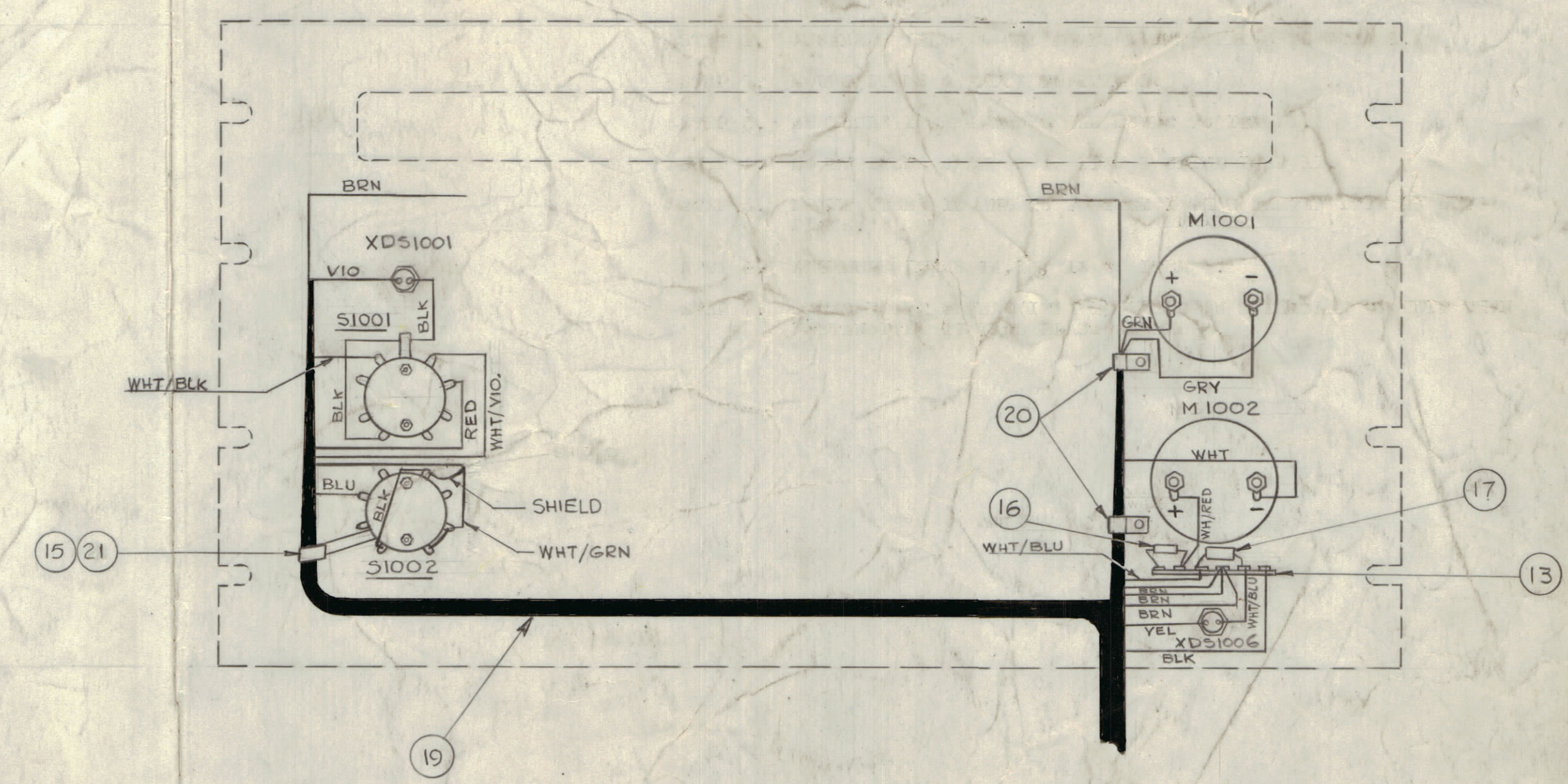
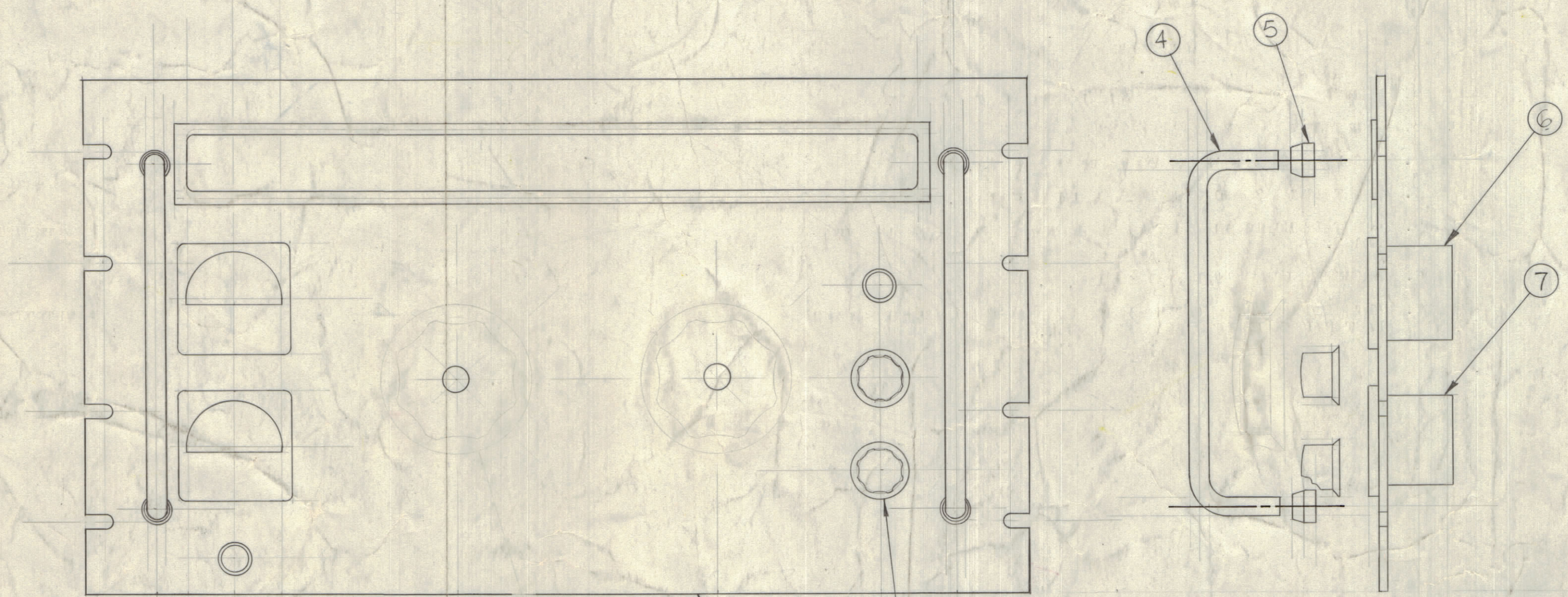
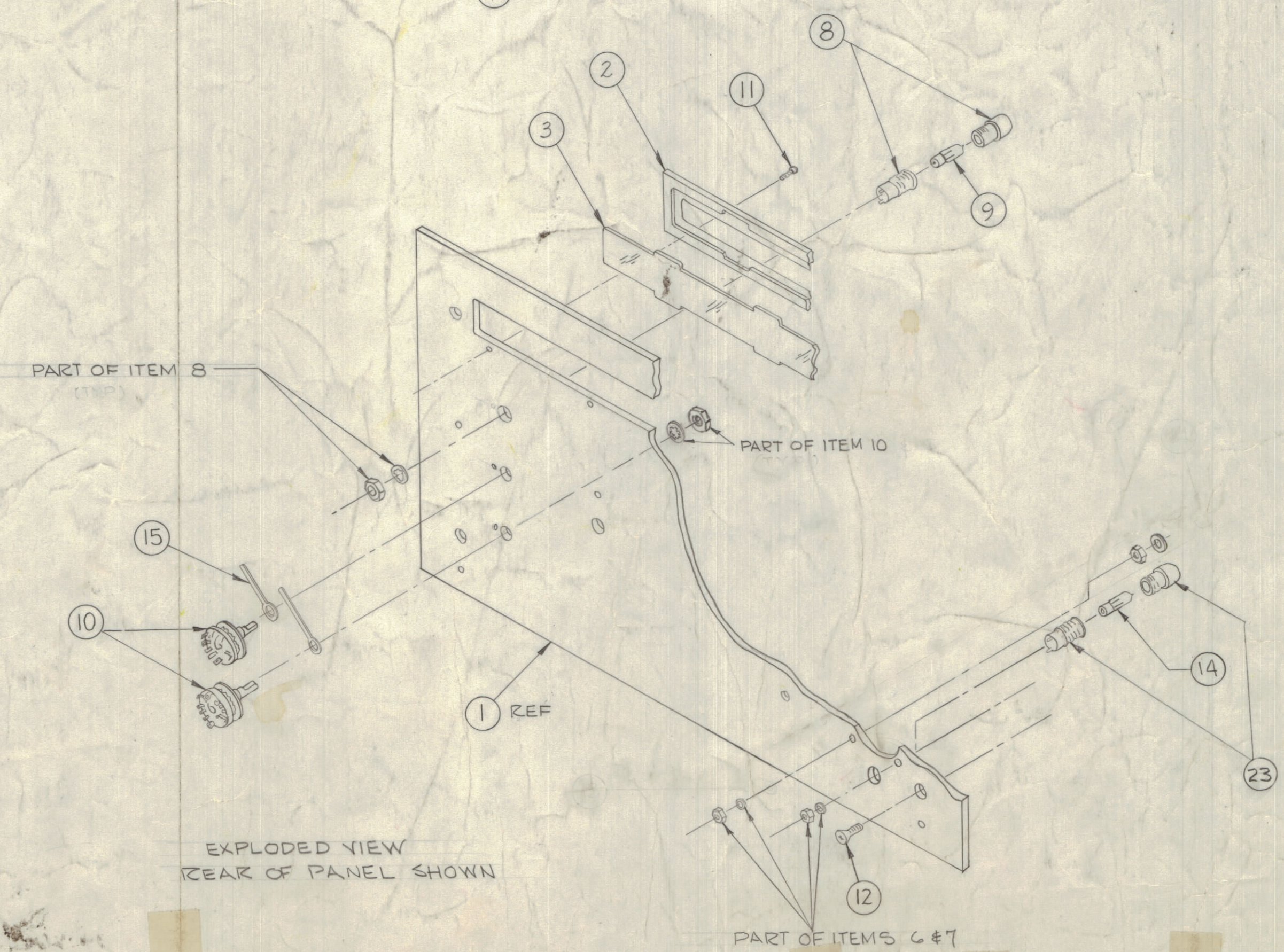


REVISIONS							
ZONE	SYM	DESCRIPTION	DATE	E.M.N. NO.	DRAFT	CHKD	APPD
X		EXPERIMENTAL RELEASE	5-16-64				
#	X1	WIRING DIAGRAM ADDED	5-16-64		#	G.D.L.	
#	X2	SYMBOL 21055 WAS R1325	6-29-64		#	G.D.L.	
#	X3	SYMBOLS METER CLARIFIED. COLOR GRAY WAS WHT.	7-27-64		#	G.D.L.	
		ORIGINAL RELEASE FOR PRODUCTION	9-11-64				
E2	A	ON M1001 GRN & GRV WIRES REVERSED ON M1001 & M1002 (F-) SYMBOLS ADDED	10-30-64	12832			
BC-54	B	CLERICAL CHANGE	3-29-65				
46	C	IT IS WAS TESTED IT. IF WAS MP123-L-F-B; CALLOUT 20 WAS 16	4-6-65	13774			
C3	D	THE TOLERANCE ON ITEM 17 WAS "K" AND IS NOW "J"	MAR 2 1967	17853			



WIRING DIAGRAM



- ASSEMBLY PROCEDURE
- STEP 1. ASSEMBLE ITEMS 8 AND 9 AND MOUNT ITEM 8 TO ITEM 1.
  - STEP 2. MOUNT ITEM 6 AND 7 TO ITEM 1, USING HARDWARE OF ITEM 7 TO MOUNT ITEMS 6 AND 7.
  - STEP 3. ASSEMBLE ITEM 4 AND ITEM 5 AND MOUNT TO ITEM 1, USING ITEM 12.
  - STEP 4. MOUNT ITEMS 2 AND 3 TO ITEM 1 USING ITEM 11.
  - STEP 5. MOUNT ITEMS 10 AND 15 TO ITEM 1 ORIENT SWITCH FOR PROPER KEY LOCATION.
  - STEP 6. MOUNT ITEM 19, USING ITEM 20 AND HARDWARE FROM ITEM 6 & 7, WIRE AS PER DIAGRAM.
  - STEP 7. ASSEMBLE ITEM 18 LOCATED ON FLAT OF SHAFT. MOUNT THEN FASTEN ITEM 18 IN PLACE AS SHOWN.
  - STEP 8. ASSEMBLE ITEM 16 LOCATED ON FLAT OF SHAFT.

REQ'D.	ITEM	PART NUMBER	DESCRIPTION	SYMBOL
1	23	TS153-1	LIGHT INDICATOR	XDS1006
X	22	B5100	SOLDER, SOFT	
1 3/4"	21	PX104-1-085	INSULATION, SLEEVING	
2	20	CUI02-3	CLAMP, "G" TYPE	
1	19	CA897	WIRING, HARNESS BRANCHED	
2	18	MP123-5-F-B	KNOB, INSTRUMENT	
1	17	RC326F221J	RESISTOR, 220Ω 1W	R1065
1	16	RC206F154J	RESISTOR, 150K, CARBON	R1055
2	15	TE111-2	LUG, SOLDER	
1	14	BI110-7	LAMP, INCANDESCENT	DS1006
1	13	TM117-26	TERMINAL, STRIP	
4	12	SCFP1032559	SCREW, MACHINE	
10	11	SC143-0348F4B	SCREEN MESH (NYLON)	
2	10	SW112	SWITCH ASSY	S1001 S1002
1	9	BI111-1	LAMP, NEON	DS1001
1	8	TS154-5	LIGHT, INDICATOR	XDS1001
1	7	MR161	METER, FIELD STRENGTH	M1002
1	6	MR160	METER, PHASE COMPARATOR	M1001
4	5	CUI39-2B	FERRULE, HANDLE	
2	4	HA10210EN	HANDLE	
1	3	PX661	WINDOW, FRONT PANEL	
1	2	PM1108	PLATE, ESCUTCHEON	
1	1	M53181(LD1523)	PANEL, FRONT MACHINING	

MATERIAL		THE TECHNICAL MATERIEL CORP.	
FINISH		MAMARONECK, NEW YORK	
T. KELLY E3112B LIST OF MATERIAL		TITLE FRONT PANEL ASSY	
SCALE DO NOT SCALE	MODEL USED ON HFR-2	ASSY. NO. A3646	
UNLESS OTHERWISE SPECIFIED DIMENSIONS ARE IN INCHES AND INCLUDE CHEMICALLY APPLIED OR PLATED FINISHES		DRAWN	DATE
DECIMALS .X ± .05 .XX ± .01 .XXX ± .005		CHECKED	DATE
FRACTIONS ± 1/64 ANGLES ± 0° 30'		ELECT. DES.	DATE
TOLERANCES		MECH. DES.	DATE
NOTES		A3646 10	

A3646 D