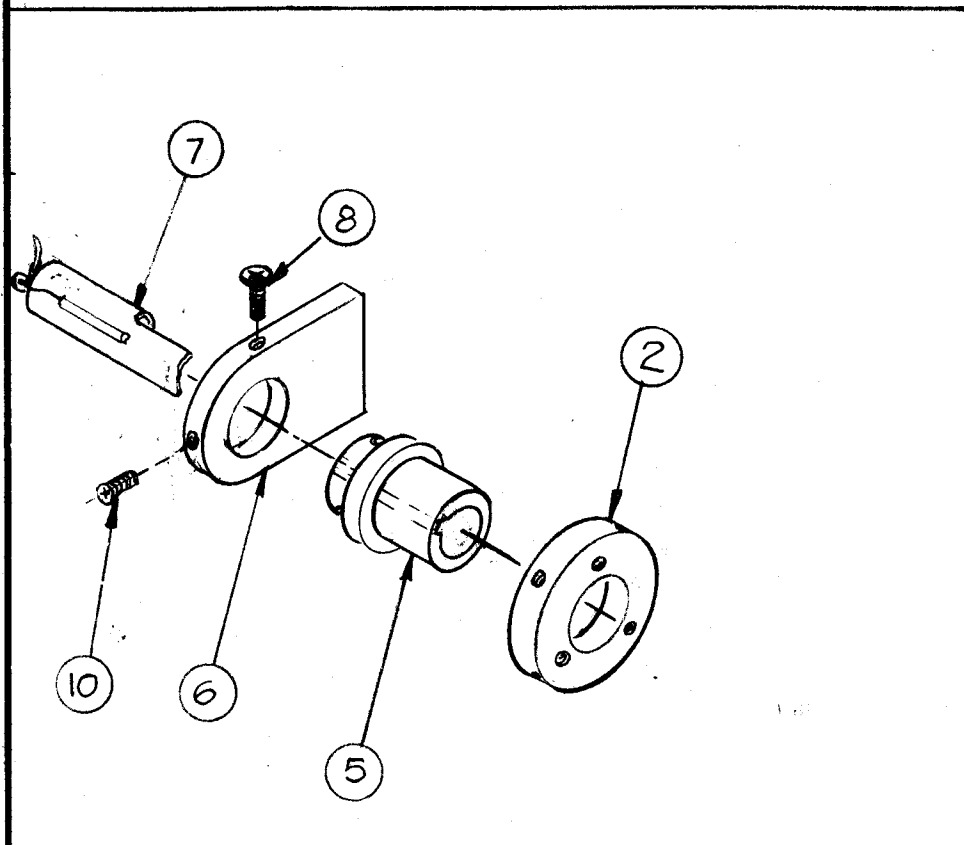
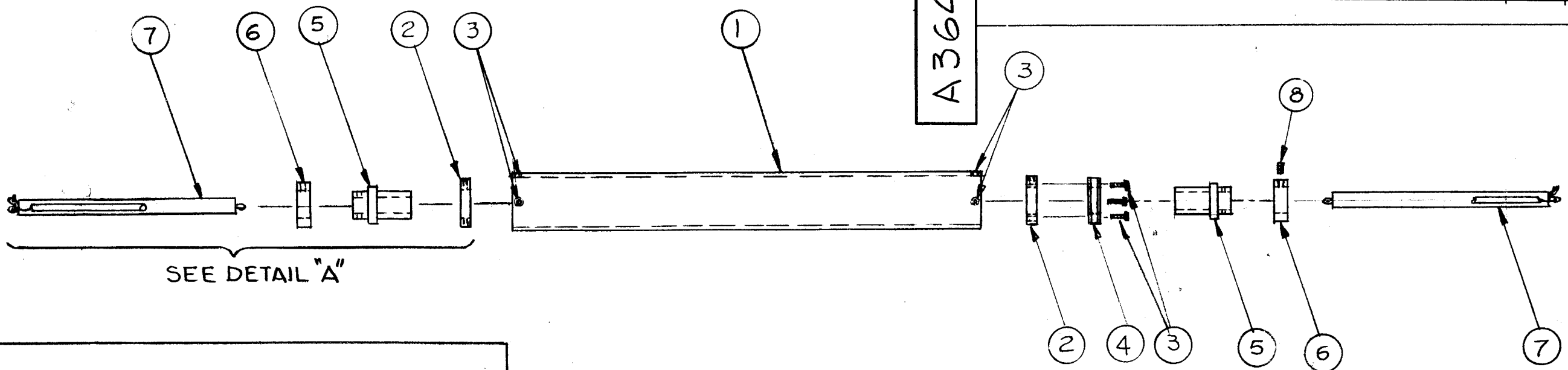


A
A3643

REVISIONS

SYM	DESCRIPTION	DATE	E.M.N. NO.	DRAFT	CHKD	APPD
X	EXPERIMENTAL RELEASE	5-2-64	#	J.B.		
X ₁	REDRAWN & CLARIFIED	7-21-64	#	G.D.L.		
Ø	ORIGINAL RELEASE FOR PRODUCTION	9-14-64	Ø	J.P.		
A	IT 9/11 DELETED IT B WAS SLAV 0440556	9/24/65	14875	J.V.V.	J.C.P.	M.M.A.



DETAIL "A"

NOTE -
USE SAME MTG ON OPPOSITE END EXCEPT
ADD ITEMS 3 & 4 AS SHOWN

NOTES

REQ'D.	ITEM	PART NUMBER	DESCRIPTION	SYMBOL
X	12	BS100	SOLDER, SOFT	
	11	DELETED		
2	10	SCBP0440SS3	SCREW, MACHINE	
	9	DELETED		
	8	SC143-0440-B-B-W	SCREW, NYLON	
2	7	AX359	INDICATOR LIGHT ASSEMBLY	
2	6	PM-1074	BRACKET, DIAL	
2	5	PX663	BUSHING, CYLINDER	
1	4	PM1075	SPROCKET	
7	3	SCFP0256SS8	SCREW, MACHINE	
2	2	PM784	BUSHING, CYLINDER MTG	
1	1	LD1449/PX660	DRUM, CYLINDER	

J. ANGER LIST OF MATERIAL

MATERIAL	THE TECHNICAL MATERIEL CORP. MAMARONECK, NEW YORK		
FINISH	TITLE TUNER DIAL ASSEMBLY		
UNLESS OTHERWISE SPECIFIED DIMENSIONS ARE IN INCHES AND INCLUDE CHEMICALLY APPLIED OR PLATED FINISHES	DRAWN: G.D.L.	DATE: 7-21-64	FINAL APPROVAL: [Signature]
	CHECKED: [Signature]	DATE: 9-11-64	
DECIMALS .X ± .05 .XX ± .01 .XXX ± .005	TOLERANCES	FRACTIONS ± 1/64 ANGLES ± 0° 30'	DATE: 7/22/64
ELECT. DES: [Signature]		DATE: 7/22/64	SHEET: A3643
MECH. DES: [Signature]		DATE:	REV. LTR.: A

1	HFR-2	
1	HFR-2	
Q'TY./UNIT	MODEL USED ON	ASS'Y. NO.
SCALE 1:4	CODE A	
THE CONTENTS OF THIS DRAWING ARE THE EXCLUSIVE PROPERTY OF THE TECHNICAL MATERIEL CORP. ITS UNAUTHORIZED USE OR REPRODUCTION IN WHOLE OR IN PART IS STRICTLY FORBIDDEN.		