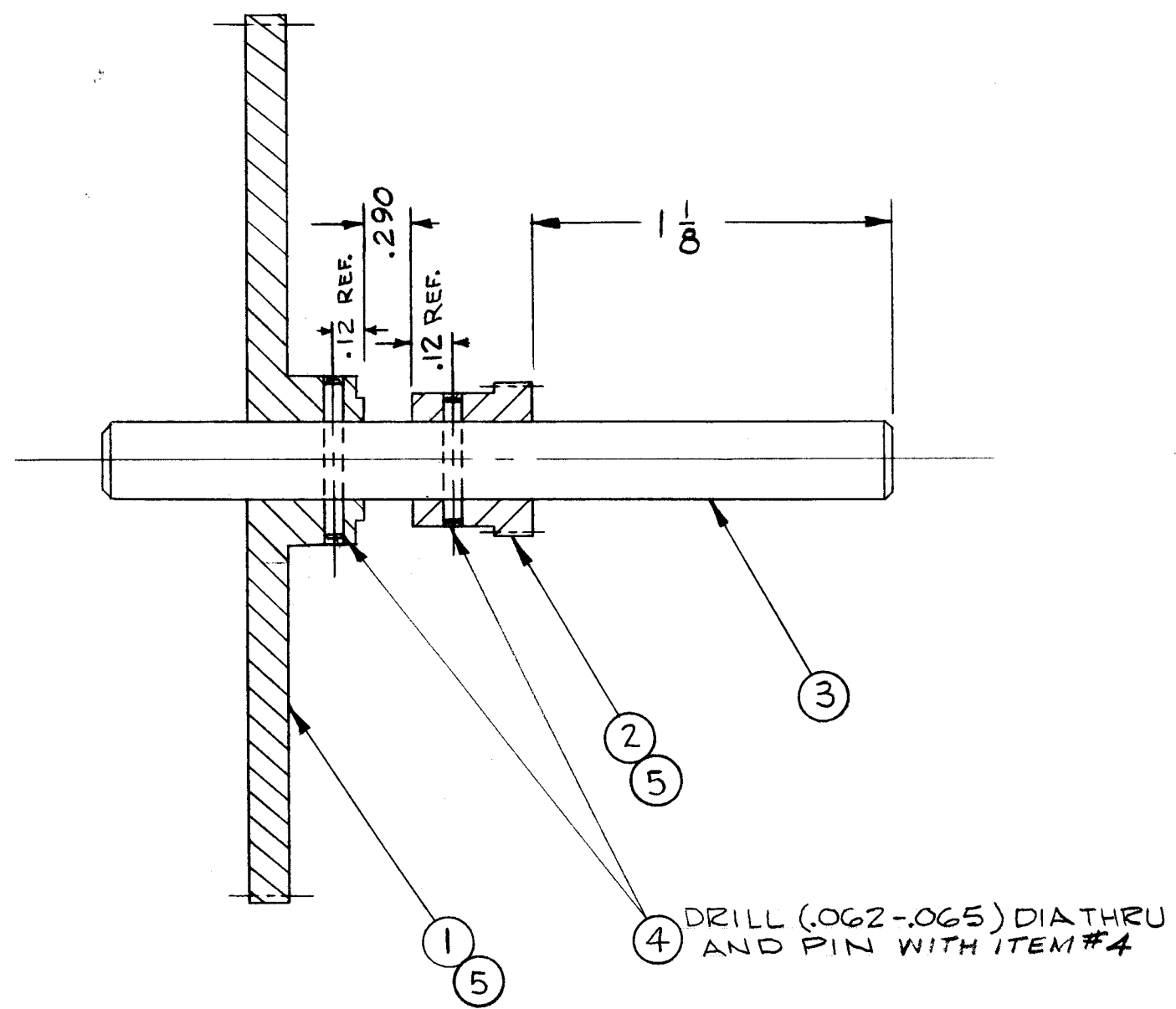


A  
A 3488

REVISIONS

SYM	DESCRIPTION	DATE	E.M.N. NO.	DRAFT	CHKD	APPD
X	EXPERIMENTAL RELEASE	3-5-64	-	BD	@	
XI	ITEM 3 WAS PM1051-RF-1.437	6/8/64	XI	A.M.		
Ø	ORIGINAL RELEASE FOR PRODUCTION	8/13/64	-	G.B.H.		
A	ADDED ITEM 5 AND CALLOUTS CHG'D .09 TO .12 REF. 4. ADD REF TO .12	9-26-64	16886	RME		



4 DRILL (.062-.065) DIA THRU AND PIN WITH ITEM #4

2	5	SLHC 06325S3	SET SCREW	
2	4	PN59-062-6	PIN, SPRING	
1	3	PM1051-RF-2.437	SHAFT	
1	2	GR 205-1	GEAR, SPUR, HUB	
1	1	GR 205-4	GEAR, SPUR, HUB	
REQ'D.	ITEM	PART NUMBER	DESCRIPTION	SYMBOL

LIST OF MATERIAL

MATERIAL	THE TECHNICAL MATERIEL CORP. MAMARONECK, NEW YORK			
FINISH	TITLE GEAR ASSY (TURRET)			
UNLESS OTHERWISE SPECIFIED DIMENSIONS ARE IN INCHES AND INCLUDE CHEMICALLY APPLIED OR PLATED FINISHES		DRAWN <i>A. R. ...</i> DATE 2-10-64	FINAL APPROVAL <i>RAL</i> DATE 3-3-64	
DECIMALS .X ± .05 .XX ± .01 .XXX ± .005	TOLERANCES	ELECT. DES. <i>T. K...</i>	DATE 8-1-64	DATE
		A 3488		A
		SHEET		REV. LTR.

1	HFRR-2	A3533
Q'TY./UNIT	MODEL USED ON	ASS'Y. NO.
SCALE 2:1	CODE A	
THE CONTENTS OF THIS DRAWING ARE THE EXCLUSIVE PROPERTY OF THE TECHNICAL MATERIEL CORP. ITS UNAUTHORIZED USE OR REPRODUCTION IN WHOLE OR IN PART IS STRICTLY FORBIDDEN.		

NOTES