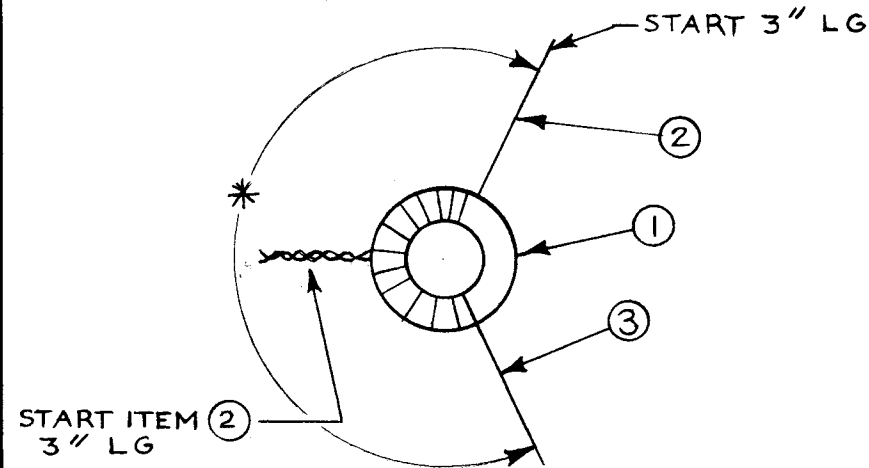
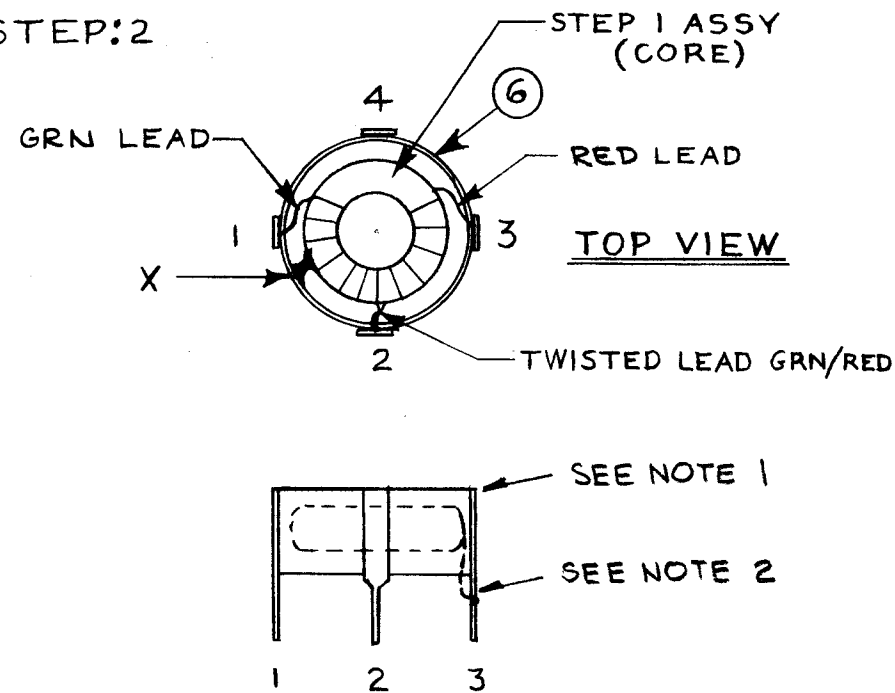


STEP:1



1. WIND 6 TURNS OF ITEM ② ON ITEM ①, WIND 9 TURNS OF ITEM ③ ON ITEM ① IN THE SAME DIRECTION AS ITEM ② OVER-ALL WINDING TO COVER 2/3 THE CORE ON ITEM ① AS INDICATED BY *, STAKE WITH ④.
2. CHECK L & Q.
3. BAKE FOR 20 MINUTES AT 150°F.
4. COAT THOROUGHLY WITH ITEM ⑤ IMMEDIATELY AFTER BAKING PROCESS.

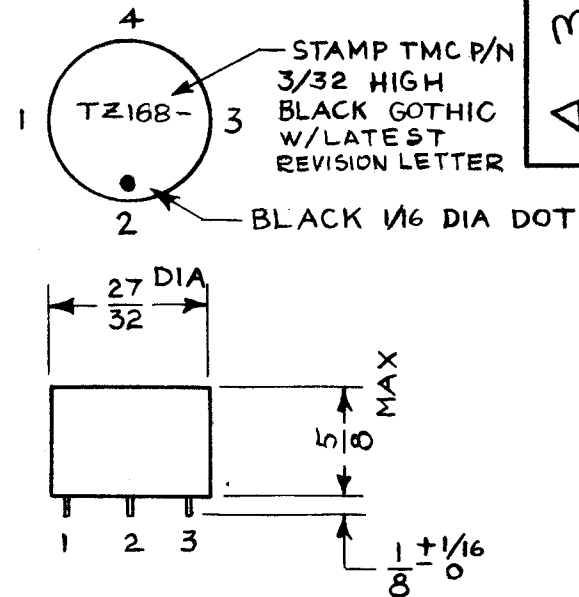
STEP:2



1. STAKE CORE IN ITEM ⑥ 3 TO 4 PLACES INDICATED BY X WITH ITEM ④
2. SOLDER LEADS TO TERMINALS OF ITEM ⑥
3. CHECK L & Q.

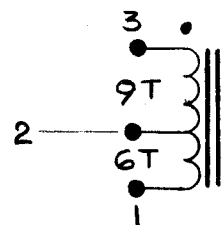
NOTES

STEP:3



1. ENCAPSULATE STEP 2 ASSY WITH COMPOUND, POTTING ITEM ⑦ TO ABOVE DIMENSIONS.
2. CHECK L & Q.

WINDING	R	L	Q
9T	-	1.57 μh ± 10%	> 80 AT 7.9 MC
6T	-		



• START OF WINDING

5	LFS-1	
Q'TY./UNIT	MODEL USED ON	ASS'Y. NO.
SCALE #	CODE A	

THE CONTENTS OF THIS DRAWING ARE THE EXCLUSIVE PROPERTY OF THE TECHNICAL MATERIEL CORP. ITS UNAUTHORIZED USE OR REPRODUCTION IN WHOLE OR IN PART IS STRICTLY FORBIDDEN.

A 3451 0

REVISIONS

SYM	DESCRIPTION	DATE	E.M.N. NO.	DRAFT	CHKD	APPD
XI	ITEMS ①, ②, ③ & ④ ADDED	7/25/64	1	JK	ML	VS
0	ORIGINAL RELEASE	7-27-64	-	G.D.L	Q	

NOTE:

- 1-CUT OFF TOP OF LUGS FLUSH WITH BAKELITE (ITEM 6)
- 2-WRAP LEADS AROUND LUGS CLOSE AS POSSIBLE TO BAKELITE

REQ'D.	ITEM	PART NUMBER	DESCRIPTION	SYMBOL
	10			
	9			
-	8	BS 100	SOLDER, SOFT	
-	7	GL 128-2	COMPOUND, POTTING (RED)	
1	6	TM 124-3	TERMINAL, COLLAR	
-	5	GL 130	CEMENT, Q DOPE	
-	4	GL 103	DUCO, CEMENT	
-	3	WI 141-34-2	WIRE, MAGNET (RED)	
-	2	WI 141-34-5	WIRE, MAGNET (GREEN)	
1	1	CI 127-4	CORE	

M. GELLMAN		LIST OF MATERIAL	
MATERIAL		THE TECHNICAL MATERIEL CORP. MAMARONECK, NEW YORK	
FINISH		TITLE TZ 168 ASSEMBLY	
UNLESS OTHERWISE SPECIFIED DIMENSIONS ARE IN INCHES AND INCLUDE CHEMICALLY APPLIED OR PLATED FINISHES		DRAWN: <i>N. Bates</i> CHECKED: <i>Q</i> ELECT. DES: <i>JK</i> MECH. DES: <i>G.D.L.</i>	DATE: 9/3/63 DATE: 7-27-64 DATE:
DECIMALS .X ± .05 .XX ± .01 .XXX ± .005	FRACTIONS ± 1/64 ANGLES ± 0° 30'	FINAL APPROVAL: <i>ML</i> DATE:	DATE:
TOLERANCES		SHEET: A 3451	REV. LTR.: 0