

DATE	NEG	Pos
6/23/65	PURCH	QA

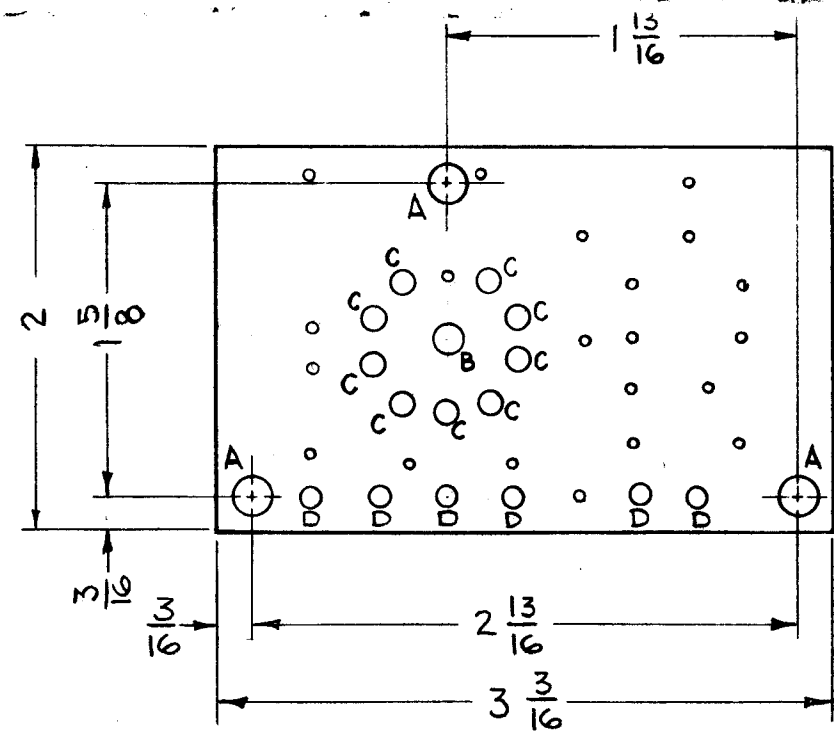
REVISIONS					
SYM	DESCRIPTION	DATE	E.M.N. NO.	DRAFT	CHKD APPD
X	EXPERIMENTAL RELEASE	3/31/64			
XI	SEE SHEET 2 OF 2	4-17-64	XI	A.M.	@
O	ORIGINAL RELEASE FOR PRODUCTION	4/24/64	O	A.M.	
A	SEE SHEET 2 OF 2	8-17/65	14584	E	
B	NOTE 1 THICKNESS WAS 3/32 (SEE SH 2)	10/27/65	14939	H.V.V.	

NOTES: TO BE MANUFACTURED IN ACCORDANCE WITH TMC SPEC. S-735, UNLESS OTHERWISE SPECIFIED.

- MATERIALS: G-10 EPOXY GLASS LAMINATE 1/16 THICK 2-OUNCE COPPER CLAD BOTH SIDES.
- ALL BOARDS WILL BE DOUBLE-SIDED. WHEN A PAD APPEARS ON THE PRINTED CIRCUIT SIDE, A SIMILAR PAD IN SIZE AND SHAPE SHALL APPEAR ON THE COMPONENT SIDE IN EXACT REGISTER. (EXCEPT WHERE AN EXCEPTION IS NOTED)
- (A) ALL HOLES EXCEPT "A" MTG. HOLES ARE TO BE PLATED THRU WITH MINIMUM COPPER PLATING THICKNESS OF .0015.
(B) PLATE .0003 TO .0005 NICKEL & 25 MILLIONTHS MINIMUM OF GOLD. ALL ETCHED SURFACES AND PLATED-THRU HOLES.
- CONDUCTOR WIDTH: .046 MAX. .031 MIN
SPACING BETWEEN CONDUCTORS: .031 MIN

ORIGINAL ARTWORK TO BE REMOVED FROM PROTECTIVE POCKETS WHEN PHOTOGRAPHING. (A-3408-1)

HOLE & PAD SPECIFICATION			
HOLE	DIA.	PAD DIA	REQ'D
UNMARKED	.050	.130	21
A	.189	.250	3
B	.144	.250	1
C	.101	.156	9
D	.081	.130	6



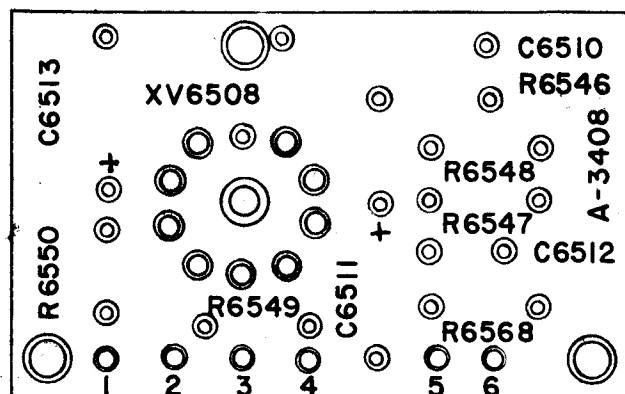
MACHINING (A-3408-2)

(ORIGINAL ARTWORK TO BE SUPPLIED BY TMC FOR PHOTOGRAPHING (SCALE 1:1))

REQ'D.	ITEM	PART NUMBER	DESCRIPTION	SYMBOL
AALTONEN LIST OF MATERIAL				
MATERIAL		THE TECHNICAL MATERIEL CORP. MAMARONECK, NEW YORK		
FINISH		TITLE PRINTED CIRCUIT BOARD ASSY (MONITOR AMPL.)		
UNLESS OTHERWISE SPECIFIED DIMENSIONS ARE IN INCHES AND INCLUDE CHEMICALLY APPLIED OR PLATED FINISHES		DRAWN T. RAMIREZ CHECKED @ ELECT. DES. [Signature] MECH. DES. [Signature]	DATE 3/7/64 DATE 3-24-64 DATE 4/13/64 DATE 4-30-64	FINAL APPROVAL [Signature] DATE A-3408 B SHEET 1 OF 2
DECIMALS	TOLERANCES		FRACTIONS	REV. LTR.
.X ± .05 .XX ± .01 .XXX ± .005			± 1/64 ANGLES ± 0° 30'	

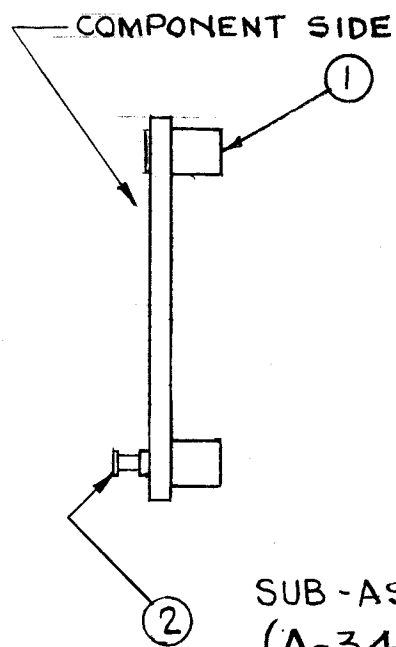
NOTES

THE CONTENTS OF THIS DRAWING ARE THE EXCLUSIVE PROPERTY OF THE TECHNICAL MATERIEL CORP. ITS UNAUTHORIZED USE OR REPRODUCTION IN WHOLE OR IN PART IS STRICTLY FORBIDDEN.

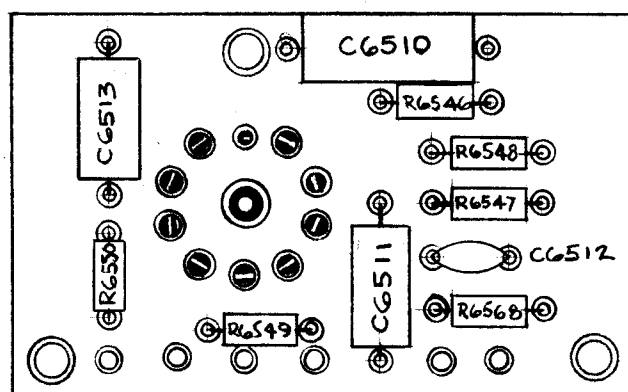


1. LETTERING: 3/32 HIGH BLACK GOTHIC LOCATED AS SHOWN.
 2. MARKING PROCESS: AS PER TMC SPEC. S-727.

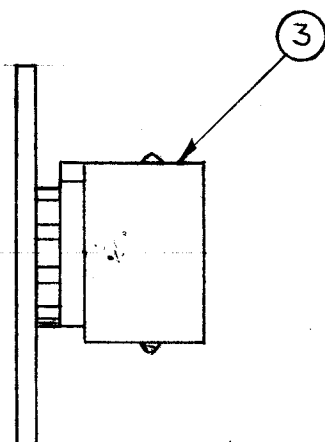
MARKING (A-3408-3)



SUB-ASSY (A-3408-4)



ELECTRICAL ASSY (A-3408-5)



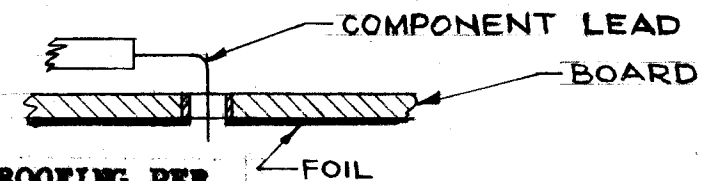
A-3408

REVISIONS

SYM	DESCRIPTION	DATE	E.M.N. NO.	DRAFT	CHKD	APPD
X	EXPERIMENTAL RELEASE	3/31/64	X			
XI	TMC S113 ADDED	4/24/64	XI	A.M.		
O	ORIGINAL RELEASE FOR PRODUCTION	4/24/64	O	A.M.		
A	ITEM 1 WAS TE-108-2	8/17/64	14584			
B	IT.1 WAS TE108-2-BC IT.2 WAS TE127-3 (SEE SH 1)	1/27/65	14959			

ASSEMBLY NOTICE

- TO MOUNT COMPONENTS, INSERT LEAD THROUGH PLATED-THRU HOLES & BEND ABOUT 1/16 OF LEAD OVER COPPER FOIL AS SHOWN.
- APPLY HEAT TO LEAD & FOIL, SOLDER. CAUTION: TOO MUCH HEAT WILL CAUSE FOIL TO SEPARATE FROM THE BOARD.
- CLEAN & INSPECT PER TMC SPEC. S-676



4. FUNGUS PROOFING PER TMC SPECIFICATION S-113

REQ'D.	ITEM	PART NUMBER	DESCRIPTION	SYMBOL
1	12	RC20GF333J	RESISTOR, FIXED, COMPOSITION	R6546
X	11	BS-100	SOLDER, SOFT	
1	10	CN112105K2	CAPACITOR, MET.	C6510
1	9	CC-100-37	CAPACITOR, CERAMIC	C6512
2	8	CE-105-10-15	CAPACITOR, ELECTROLYTIC	C6511 C6513
1	7	RC20GF683J	RESISTOR, FIXED, COMPOSITION	R6549
1	6	222J		R6550
2	5	105J		R6548 R6546
1	4	RC20GF122J	RESISTOR, FIXED, COMPOSITION	R6547
1	3	TS-161-1	SOCKET, ELECTRON TUBE, NOVAL	
6	2	TE-127-2	TERMINAL, STUD	
3	1	TE-108-1 BC	STANDOFF, RIVET TYPE	

AALTONEN

LIST OF MATERIAL

MATERIAL	THE TECHNICAL MATERIEL CORP. MAMARONECK, NEW YORK			
FINISH	TITLE PRINTED CIRCUIT BOARD ASSY (MONITOR AMPL)			
UNLESS OTHERWISE SPECIFIED DIMENSIONS ARE IN INCHES AND INCLUDE CHEMICALLY APPLIED OR PLATED FINISHES	DRAWN T. RAMIREZ	DATE 12/17/63	FINAL APPROVAL [Signature]	
DECIMALS .X ± .05 .XX ± .01 .XXX ± .005	TOLERANCES	FRACTIONS ± 1/64 ANGLES ± 0° 30'	DATE 3-24-64	DATE 4/22/64
ELECT. DES. [Signature]		DATE 4/12/64		A-3408
MECH. DES. [Signature]		DATE 4/12/64		B
SHEET 2 OF 2				

NOTES

1	MSA-1	A-3404
Q'TY./UNIT	MODEL USED ON	ASS'Y. NO.
SCALE 1:1	CODE A	
THE CONTENTS OF THIS DRAWING ARE THE EXCLUSIVE PROPERTY OF THE TECHNICAL MATERIEL CORP. ITS UNAUTHORIZED USE OR REPRODUCTION IN WHOLE OR IN PART IS STRICTLY FORBIDDEN.		