

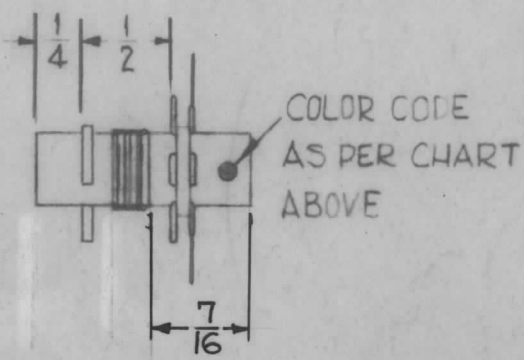
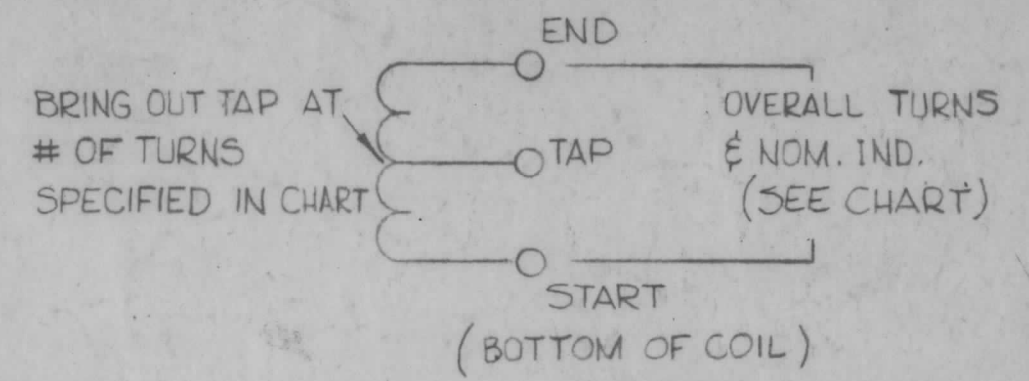
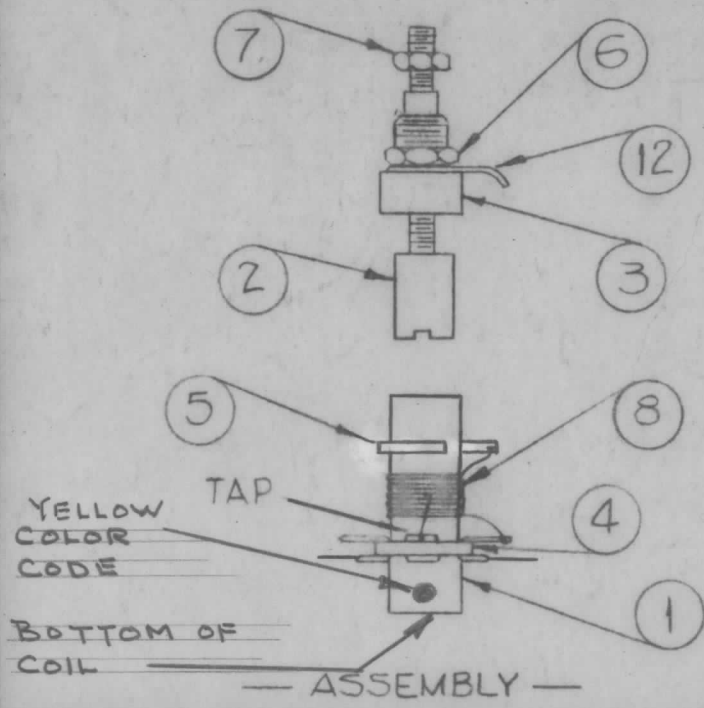
A-3033

TMC MFG. NO.	NO. OF COIL TURNS OVERALL	BRING OUT TAP AT— (NO. OF TURNS)	NOM. IND. O/A W/O CORE (Uhy)	TEST FREQ (MCS)	Q AT TEST FREQ MUST BE GREATER THAN	QUAN PER UNIT	BAND FREQ (MCS)	BAND	COLOR CODE	SCHEM SYM.	TMC PART NO.
A-3033	12	9	1.1 (1.0-1-2)	7.9	70	1	8-16	3	YELLOW	T-13	TT-136

**WINDING MACHINE DATA**  
CLOSE WOUND, SINGLE LAYER

**PROCEDURE**

1. SECURE ITEMS 4 & 5 TO COIL FORM (ITEM 1) WITH INSULEX (ITEM 10).
2. WIND REQ. NUMBER OF TURNS OF ITEM 8 ON COIL FORM AND BRING OUT TAP WHEN REQ. AS PER CHART.
3. STAKE COIL ENDS TO COIL FORM WITH Q-MAX (ITEM 9).
4. SOLDER COIL LEADS AS SHOWN
5. BAKE COIL FOR 1/2 HOUR AT 210°F.
6. PAINT COIL WITH INSULEX (ITEM 10).
7. DO NOT ALLOW INSULEX TO FORM ON TOP END OF COIL FORM WHERE BUSHING WILL BE ASSEMBLED
8. TEST UNIT AS PER CHART AND SCHEMATIC, WITHOUT CORE. (USE BOONTON Q-METER MODLE 160A OR EQUIV.)
9. ASSEMBLE AND SECURE ITEMS 2, 3 & 12 WITHIN COIL FORM. WIRE ITEM 12 (Solder lug) TO ITEM 5 WITH BUSS-BAR & SOLDER.



X	13	WL-100-7	WIRE, BUSS
1	12	TE-104-5	LUG, SOLDER
X	11	BS-100	SOLDER, SOFT
X	10	GL-104-2	INSULEX, U-85
X	9	GL-102	LACQUER, Q-MAX.
X	8	WI-107-5	WIRE, #24 DSC
1	7	NTH0632BN8	NUT, HEX
1	6	NTH2528BN14	NUT, HEX
1	5	TE-153-2	TERMINAL, RING TYPE
1	4	TE-170-3	TERMINAL, COLLER
1	3	SM-110	BUSHING, COIL MTG.
1	2	CI-109-7	CORE, TUNING
1	1	CF-133-1.125	COIL FORM

SYM	DESCRIPTION	DATE	CH. NO.	DRAFTS	CHECKER	ENG. APP.
C	ON IT. 8 DESC. #24 DSC ADDED IT. 4 & IT. 5 ON PICT. RELOCATED	1.5.65	13177			
B	7/16 DIM. RELOCATED	1-16-62	6200	LE		
A	ON SCHEM. SYM. T-13 WAS ADDED Q WAS 90 ITEM 10 WAS CF-123	8/31/61	5520	LE	GB	DM

UNLESS OTHERWISE SPECIFIED:  
DIMENSIONS ARE IN INCHES  
TOLERANCES ON FRACTIONS ± 1/64 DECIMALS ± .005 ANGLES ± 1/2°

SCALE: 1 GPE-1

MAXIMUM ALLOWABLE TOLERANCES HAVE BEEN DETERMINED AND ANY DEVIATIONS WILL BE CAUSE FOR REJECTION. REMOVE ALL BURRS AND SHARP EDGES

REQ. PER UNIT	MODEL	SECTION	ASS'Y. NO.	DATE
1	GPE-1			6-20-61
USED ON				

REQ.	ITEM	PART NO.	DESCRIPTION	SYMBOL
THE TECHNICAL MATERIEL CORP. MAMARONECK, NEW YORK				
STOCK SIZE				
TT-136 ASSY				
MATERIAL				
TYPE & TEMPER		HEAT TREAT. SPEC.	DRAWN	CHECKER
			R UZZO	W De
FINISH & SPEC. NO.		ELEC. DES. APP.	MECH. DES. APP.	FINAL APPROVAL
				DM
				A-3033 C