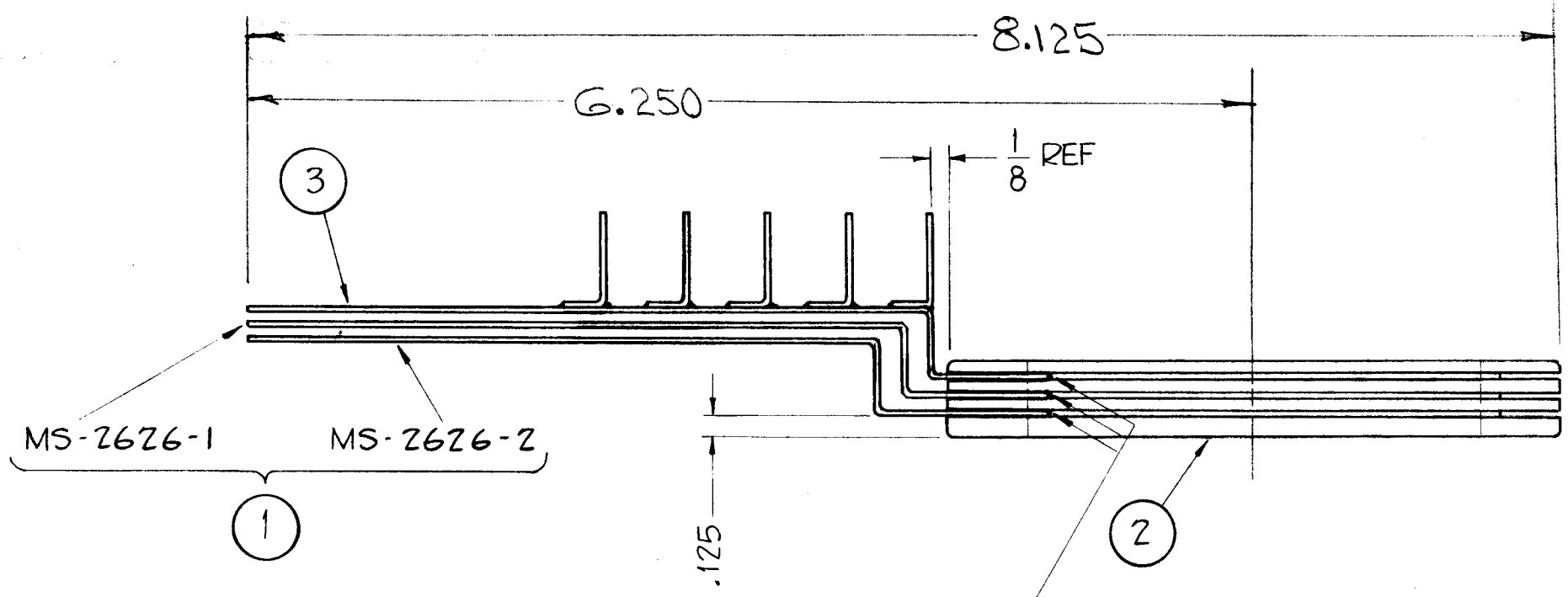
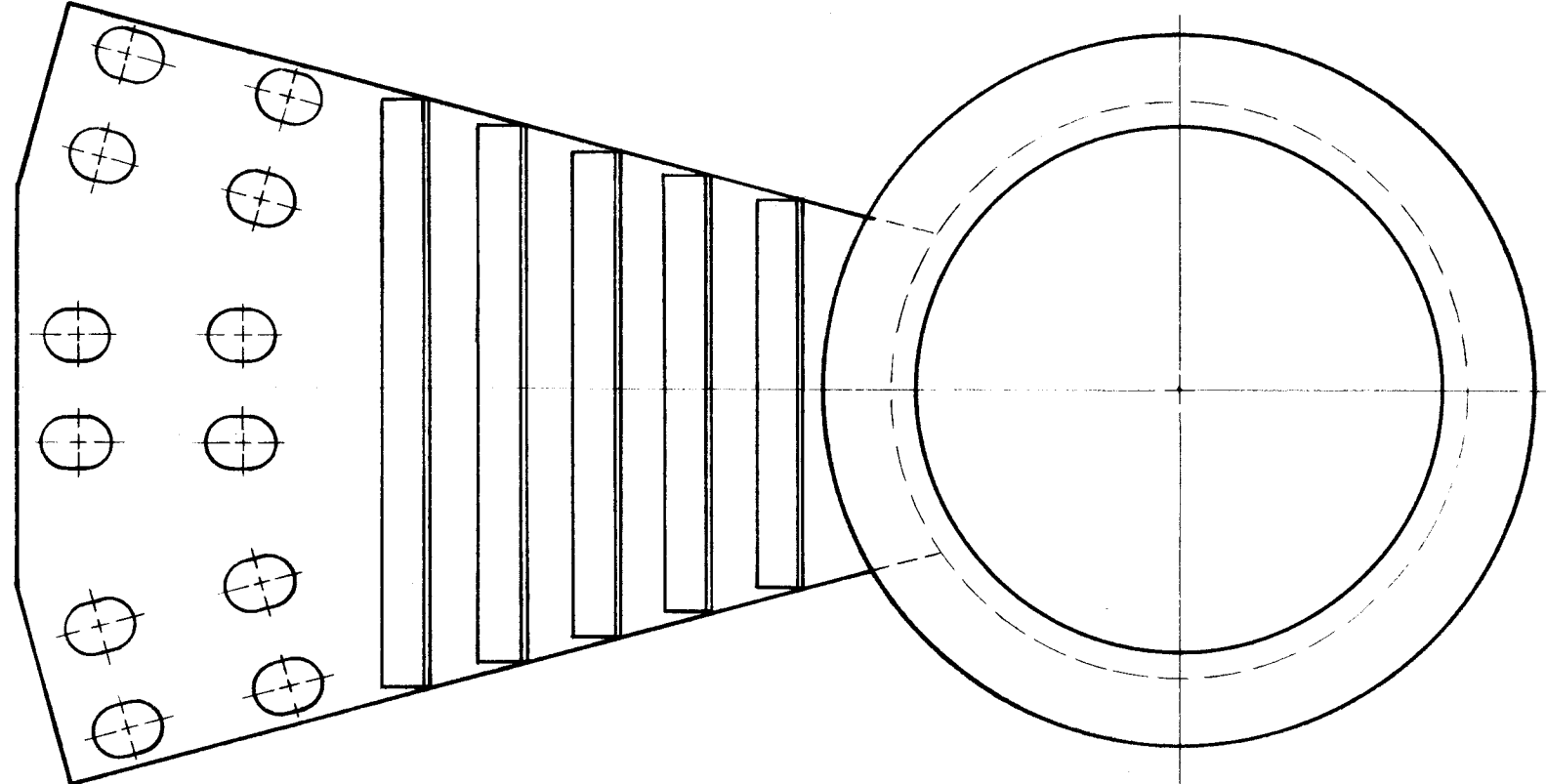


A-3026 A



FINISHING NOTE
RHODIUM PLATE -.000025

ALL DIMENSIONS APPLY
AFTER PLATING

"NO LONGER USED"
REPLACED BY "DM-709" ON 2-28 MC 40K XMTRS
BUT MAY BE USED FOR SPARE PARTS ON 4-28
MC XMTRS.

BRAZE ITEMS 1 & 3 TO ITEM 2
AND COPPER FLASH BRAZED AREA.

1	3	MS-2628	LEAF CONTACT, WIPER, BANDSW.
1	2	PM-703	RING, WIPER, BANDSWITCH
2	1	MS-2626-1,2	LEAF CONTACT, BANDSWITCH

REQ.	ITEM	PART NO.	DESCRIPTION	SYMBOL
THE TECHNICAL MATERIEL CORP. MAMARONECK, NEW YORK				
WIPER ASSEMBLY				
MATERIAL				
TYPE & TEMPER		HEAT TREAT. SPEC.		DRAWN
SEE NOTE				CHECKER
FINISH & SPEC. NO.		ELEC. DES. APP.		MECH. DES. APP.

UNLESS OTHERWISE SPECIFIED:		SCALE: - DO NOT SCALE -				
DIMENSIONS ARE IN INCHES		MAXIMUM ALLOWABLE TOLERANCES HAVE BEEN DETERMINED AND ANY DEVIATIONS WILL BE CAUSE FOR REJECTION. REMOVE ALL BURRS AND SHARP EDGES				
TOLERANCES ON FRACTIONS ± 1/64 DECIMALS ± .005 ANGLES ± 1/2°		DATE	CH. NO.	DRAFTS	CHECKER	ENG. APP.
		11-21-61	5914	J.E.	Q.A.	Q.B.

2	GPT-40K	BAND SW	6-23-61
REQ. PER UNIT	MODEL	SECTION	ASS'Y. NO. DATE
USED ON			

John C Biele
CHECKER

Q.B.
FINAL APPROVAL

A-3026 A