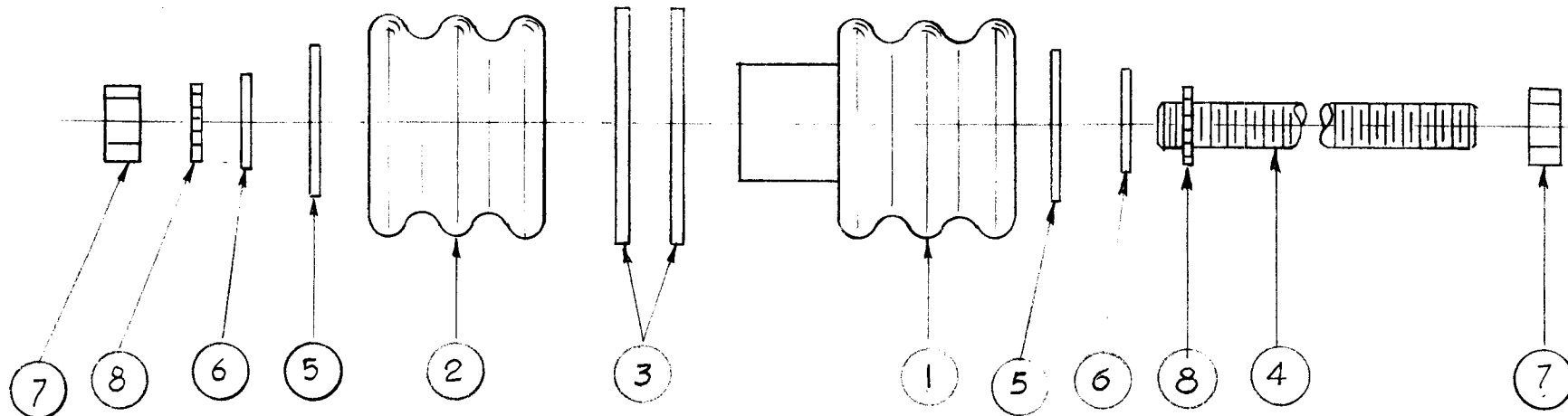


REQ. PER. UNIT	USED ON			A-3024	A
	MODEL	ASS'Y. NO.	DATE		
3	AX-186		6-23-61		



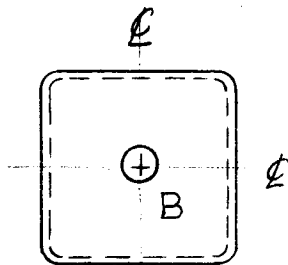
2	8	LWE 25MRN	LOCKWASHER, EXT.
2	7	NTH2520BN14	NUT, HEX.
2	6	FW25HBN	WASHER, FLAT
2	5	WA-109-55	WASHER, FIBER
1	4	SM2520BN4.00	ROD, THREADED, 3 1/2" Lg.
2	3	GA-117	GASKET
1	2	NS-128-1	BUSHING, INSULATED, FEMALE
1	1	NS-127-1	BUSHING, INSULATED, MALE

ISSUE	ITEM	CHANGED FROM	DATE	CH. NO.	DRAFTS	CHECKER	ENG. APP.
A		ITG WAS FW25MBN	10.25.66	17050	WFW	<i>[Signature]</i>	<i>[Signature]</i>
TOLERANCES			SCALE:				
DEC. DIM. ± FRAC. DIM. ± ANGULAR DIM. ±			MAXIMUM ALLOWABLE TOLERANCES HAVE BEEN DETERMINED AND ANY DEVIATIONS WILL BE CAUSE FOR REJECTION. REMOVE ALL BURRS AND SHARP EDGES				

REQ. ITEM	PART NO.	DESCRIPTION	SYMBOL
THE TECHNICAL MATERIEL CORP. MAMARONECK, NEW YORK AX-261 ASS'Y. (FEEDTHRU, INSULATED)			
MATERIAL		<i>[Signature]</i> <i>[Signature]</i>	<i>[Signature]</i>
TYPE & TEMPER	HEAT TREAT. SPEC.	DRAWN	CHECKED
FINISH & SPEC. NO.		ELEC. DES. APP	MECH. DES. APP
			FINAL APPROVAL A-3024

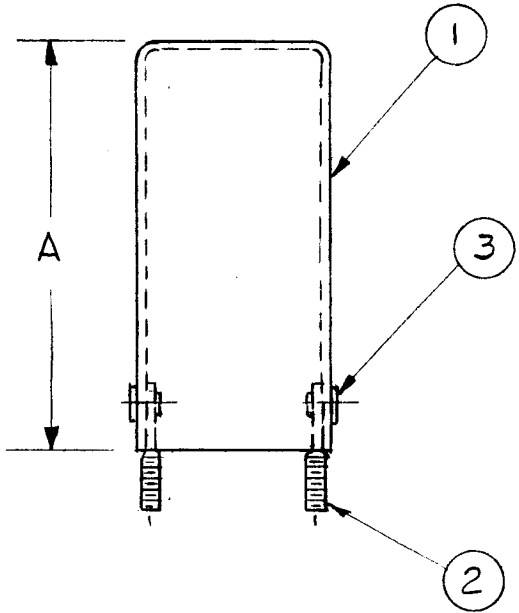
PER. UNIT	MODEL	ASS'Y. NO.	DATE
(-1)	GPR-92		6-30-61
4(-2)	AFC-2		11-15-61

A-3029 C



B ~ (SEE CHART) 1 REQ.

TMC PART NO	A LENGTH	B HOLE DIA	CAN (ITEM 1)
A-3029-1	2 1/8	3/16	FP-182-7
A-3029-2	1 3/16	3/16	FP-182-8



NOTICE TO PERSONS RECEIVING THIS DRAWING

THE TECHNICAL MATERIEL CORPORATION claims proprietary right in the material disclosed hereon. This drawing is issued in confidence for engineering information only and may not be reproduced or used to manufacture anything shown hereon without permission from THE TECHNICAL MATERIEL CORPORATION to the user. This drawing is loaned for mutual assistance and is subject to recall at any time.

Property of:
THE TECHNICAL MATERIEL CORPORATION
MAMARONECK, NEW YORK

REQ.	ITEM	PART NO.	DESCRIPTION	SYMBOL
2	3	EY-100-1	EYELET, FLAT FLANGE	
2	2	SC-106-1	BOLT, SPADE	
1	1	SEE CHART	CAN, MACHINING	

ISSUE	ITEM	CHANGED FROM	DATE	CH. NO.	DRAFTS	CHECKER	ENG. APP.
C		FINISH DELETED	11-14-66	17252	WHW	<i>[Signature]</i>	<i>[Signature]</i>
B	1	S107 WATER DIP LACQUER WAS YELLOW IRIDIITE	6-6-62	6748	V.R.R.	<i>[Signature]</i>	<i>[Signature]</i>
A	2	A-3029-2 Added (CHART)	11-15-61	5878	L.B.	<i>[Signature]</i>	
	1	FP-182-7 Was FP-102-7					
TOLERANCES			SCALE:				
DEC. DIM. ±			MAXIMUM ALLOWABLE TOLERANCES HAVE BEEN DETERMINED AND ANY DEVIATIONS WILL BE CAUSE FOR REJECTION. REMOVE ALL BURRS AND SHARP EDGES				
FRAC. DIM. ± 1/64							
ANGULAR DIM. ±							

STOCK SIZE	MATERIAL	TYPE & TEMPER	HEATTREAT. SPEC.	DRAWN	CHECKED	FINAL APPROVAL
ALUMINUM				<i>[Signature]</i>	<i>[Signature]</i>	<i>[Signature]</i>
FINISH & SPEC. NO.				ELEC. DES. APP	MECH. DES. APP	A-3029 C

ITEM
 SYMBOL(S) NO. USED TO MOUNT QUAN.
 3 FC-102-1XXN 46

REQ. PER UNIT	USED ON			A-3038
	MODEL	ASS'Y. NO.	DATE	
1	AP-103	A-3039		

46 3 EY-100-1 EYELET
 1 2 LD-707/MS-2099 PLATE, FUSE MTG
 46 1 FC-102-1XXN CLIP, ELECT, 1/4 D.

REQ.	ITEM	PART NO.	BUDETTI	DESCRIPTION	SYMBOL							
				THE TECHNICAL MATERIEL CORP. MAMARONECK. NEW YORK								
				PLATE ASSY, FUSE CLIP								
SYM	DESCRIPTION	DATE	CH. NO.	DRAFTS	CHECKER	ENG. APP.	MATERIAL					
UNLESS OTHERWISE SPECIFIED DIMENSIONS ARE IN INCHES AND INCLUDE CHEMICALLY APPLIED OR PLATED FINISHES		SCALE						16 ¹² /63	16 ¹ /64	RAC		
DECIMALS .X ± .05 .XX ± .01 .XXX ± .005	TOLERANCES	FRACTIONS ± 1/64 ANGLES ± 0° 30'	CODE					TYPE & TEMPER	HEAT TREAT. SPEC.	DRAWN	CHECKED	FINAL APPROVAL
										JB		A-3038
								FINISH & SPEC. NO.	ELEC. DES. APP.	MECH. DES. APP.		

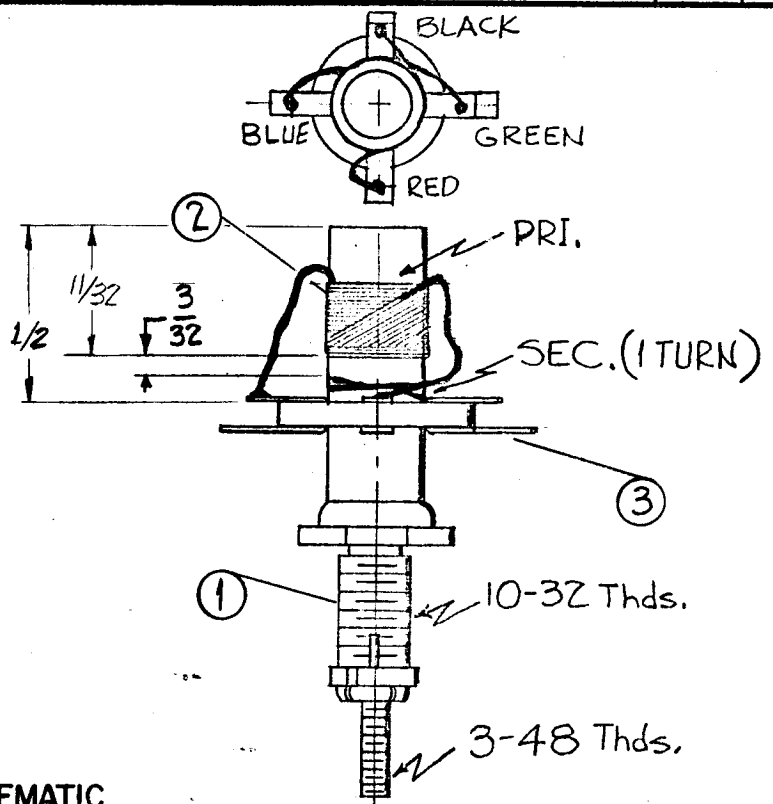
SYMBOL(S)	ITEM NO.	USED TO MOUNT	QUAN.	REQ. PER UNIT	USED ON			A-3039
					MODEL	ASS'Y. NO.	DATE	
				1	AP-103	AP-103	1-10-64	
SPARES	2							
SPARES	3							
SPARES	4							
SPARES	5							
SPARES	6							
SPARES	7							
SPARES	8							
	13	FS-100	1					
	15	A-3038	4					
		HI-112	8					
		MS-2096	4					
		MS-2098	2					
	16	FS-100	2	2	21	SCFP0348BN5	SCREW, MACH	
	17	A-3038	4	18	20	SCBP0440BN6	SCREW, MACH	
		HI-112	8	18	19	NTH0440BN8	NUT, HEX	
		MS-2096	4	2	18	NTH0348BN6	NUT, HEX	
		MS-2098	2	18	17	LWE04MRN	WASHER, LOCK, EXT	
	18	FS-100	2	2	16	LWE03MRN	WASHER, LOCK, EXT	
	19	A-3038	4	18	15	FW04HBN	WASHER, FLAT	
		HI-112	8	1	14	FS-100	FASTENER	
		MS-2096	4	1	13	MS-2098-1	PLATE, FASTENER	
		MS-2098	2	1	12	MS-2096	SHIELD, SAFETY	
	20	A-3038	4	1	11	MS-2095	PANEL, FRONT, PS FR	
		HI-112	8	1	10	LD-706/MS-2097	DOOR, FUSE BOX	
		MS-2096	4	1	9	HI-112-1	HINGE, DOOR	
		MS-2098	2	4	8	FU-102-5	FUSE, 5A	
	21	FS-100	2	2	7	FU-102-3	FUSE, 3A	
				4	6	FU-102-2	FUSE, 2A	
				4	5	FU-102-1	FUSE, 1A	
				3	4	FU-102-.500	FUSE, .500A	
				3	3	FU-102-.250	FUSE, .250A	
				3	2	FU-102-.125	FUSE, .125A	
				1	1	A-3038	PLATE ASSY, FUSE CLIP	

REQ.	ITEM	PART NO.	BUDETTI	DESCRIPTION	SYMBOL						
				THE TECHNICAL MATERIEL CORP.							
				MAMARONECK. NEW YORK							
				FUSE PANEL ASSY							
SYM	DESCRIPTION	DATE	CH. NO.	DRAFTS	CHECKER	ENG. APP.	MATERIAL				
UNLESS OTHERWISE SPECIFIED DIMENSIONS ARE IN INCHES AND INCLUDE CHEMICALLY APPLIED OR PLATED FINISHES		SCALE						L.G. 12/63	L.G. 1/8/64	<i>RAC</i>	
DECIMALS .X ± .05 .XX ± .01 .XXX ± .005	TOLERANCES	FRACTIONS ± 1/64 ANGLES ± 0° 30'	CODE				TYPE & TEMPER	HEAT TREAT. SPEC.	DRAWN	CHECKED	FINAL APPROVAL
									<i>DB</i>		A-3039
							FINISH & SPEC. NO.		ELEC. DES. APP.	MECH. DES. APP.	

THE CONTENTS OF THIS DRAWING ARE THE EXCLUSIVE PROPERTY OF THE TECHNICAL MATERIEL CORP. ITS UNAUTHORIZED USE OR REPRODUCTION IN WHOLE OR IN PART IS STRICTLY FORBIDDEN.

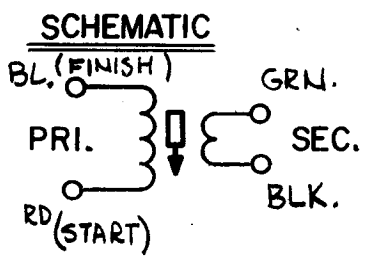
REQ. PER UNIT 1	USED ON		
	MODEL HFR-1/T	ASS'Y. NO. A-2522	DATE 6-27-62

A-3040 D



WINDING DATA

- 1- SECURE TERMINAL COLLAR TO COIL FORM WITH Q-MAX.
- 2- WIND 19 TURNS ON FORM AS SHOWN FOR PRIMARY.
- 3- STRIP ENDS SOLDER TO TERMINALS AS SHOWN
- 4- WIND 1 TURN ON COIL FORM AS SHOWN FOR SECONDARY, CAUTION: OBSERVE 3/32 SPACING BETWEEN PRIMARY & SECONDARY. STAKE WIRE TO FORM WITH Q-MAX.
- 5- STRIP ENDS SOLDER TO TERMINALS
- 6- BAKE FOR 1/2 HOUR AT 215°F TO REMOVE MOISTURE.
- 7- COAT COIL WITH Q-MAX AND BAKE FOR 1/2 HOUR AT 215°F.



WINDING MACHINE DATA
CAM GEAR 90
DRIVER GEAR 94
CAM .250

- 1)- TEST FREQ - 7.9 MC
- 2)- AT MIN., INDUCTANCE = 2.45uh ± .12uh
- 3)- Q = 32 MIN. (4)- DIST. CAPACITY - APPROX 2.5uuf (FOR REF ONLY)

X	5	BS-100	SOLDER, SOFT
X	4	GL-102	Q-MAX
1	3	TE-195	TERMINAL, COLLAR (265 ID)
X	2	WI-104-4044-SSPQS	LITZ, SIZE 40/44
1	1	CF-134-5E	FORM, COIL

D	"L" WAS 2.45uh ± .04uh	7-27-62	16656	RME	CPB	
SYM	DESCRIPTION	DATE	CH. NO.	DRAFTS	CHECKER	ENG. APP.
UNLESS OTHERWISE SPECIFIED: DIMENSIONS ARE IN INCHES TOLERANCES ON FRAC. ± 1/64 DEC. ± .005 ANGLES ± 1/2°		SCALE: Do Not Scale MAXIMUM ALLOWABLE TOLERANCES HAVE BEEN DETERMINED AND ANY DEVIATIONS WILL BE CAUSE FOR REJECTION. REMOVE ALL BURRS AND SHARP EDGES				

REQ.	ITEM	PART NO.	DESCRIPTION	SYMBOL
			THE TECHNICAL MATERIEL CORP. MAMARONECK, NEW YORK	
			TT-194 ASS'Y	
			MATERIAL	
			RUIZZO	
			J. ANGER	
			BP	
			A-3040 D	

THE CONTENTS OF THIS DRAWING ARE THE EXCLUSIVE PROPERTY OF THE TECHNICAL MATERIEL CORP. ITS UNAUTHORIZED USE FOR REPRODUCTION IN WHOLE OR IN PART IS STRICTLY FORBIDDEN.

REQ. PER UNIT	USED ON			A-3045	A
	MODEL	ASS'Y. NO.	DATE		
1	HAF-1				

ITEM NO.	USED TO MOUNT	QUANTITY
6	A-2578	10
	MS-2864	9
7	A-2576	4
9	A-2578	10
	MS-2864	9



19	9	LWE06MRN	Lockwasher, External Tooth
X	8	BS-100	Solder, Soft
4	7	SCBP0632BN6	Screw, Machine
19	6	SCBP0632BN4	Screw, Machine
4	5	PM-691FF800AA	Shaft, Flatted, 1/4" Dia.
1	4	MS-2864	Cover, Top
1	3	A-2578	Bottom Chassis Assembly
1	2	A-2577	Wraparound Chassis Assembly
1	1	A-2576	Front Panel Assembly

							REQ. ITEM	PART NO.	DESCRIPTION	SYMBOL	
							THE TECHNICAL MATERIEL CORP. MAMARONECK. NEW YORK				
							FINAL ASSEMBLY, HAF-1				
							MATERIAL				
							TYPE & TEMPER HEAT TREAT. SPEC.				
							FINISH & SPEC. NO.				
UNLESS OTHERWISE SPECIFIED DIMENSIONS ARE IN INCHES AND INCLUDE CHEMICALLY APPLIED OR PLATED FINISHES		SCALE		DATE			DRAWN		CHECKED		FINAL APPROVAL
DECIMALS .X ± .05 .XX ± .01 .XXX ± .005		FRACTIONS ± 1/64 ANGLES ± 0° 30'		CODE			John Medico DRAWN		JMA CHECKED		BP A-3045
TOLERANCES							JMA		6/11/63		A

THE CONTENTS OF THIS DRAWING ARE THE EXCLUSIVE PROPERTY OF THE TECHNICAL MATERIEL CORP. ITS UNAUTHORIZED USE OR REPRODUCTION IN WHOLE OR IN PART IS STRICTLY FORBIDDEN.

REQ. PER UNIT

2

USED ON

MODEL

TRX-1

ASS'Y. NO.

DATE

7-11-62

A-3050

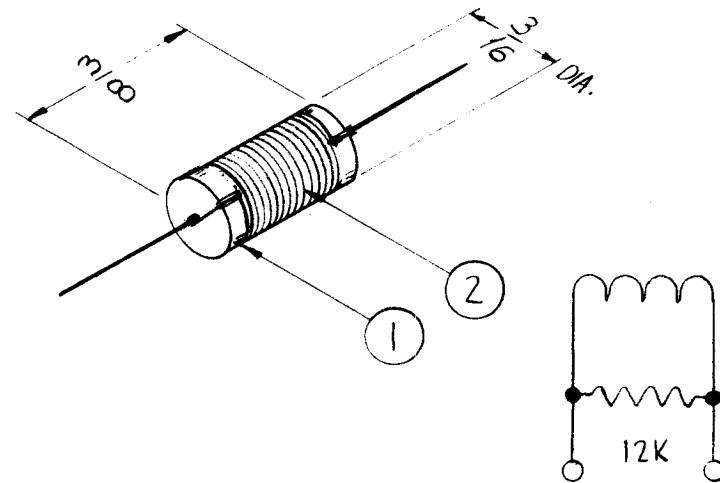
A

WINDING DATA

- WIND 30 TURNS ITEM 2 ON ITEM 1.
- SOLDER LEADS TO ITEM 1.
- COAT WITH ITEM 3.
- TEST RESISTANCE.

TEST DATA

- RESISTANCE - APPROX ZERO
- INDUCTANCE - 1.1 μ hy \pm 20%
- COIL Q 35-45 @ 7.9Mc



X	4	BS-100	SOLDER, SOFT
X	3	GL-102	ADHESIVE, Q-MAX
X	2	WI-122-31	WIRE, MAGNET, SZ 31
1	1	RC20GF123K	RESISTOR, FIXED COMPOSITION

A.	ADDED ITEM-49 CHG #1	2/20/62	10910	AM.	<i>[Signature]</i>	<i>[Signature]</i>

SYM	DESCRIPTION	DATE	CH. NO.	DRAFTS	CHECKER	ENG. APP.
		UNLESS OTHERWISE SPECIFIED: DIMENSIONS ARE IN INCHES TOLERANCES ON FRAC. \pm 1/64 DEC. \pm .05 ANGLES \pm 1/2°				
		SCALE:	NONE			
		MAXIMUM ALLOWABLE TOLERANCES HAVE BEEN DETERMINED AND ANY DEVIATIONS WILL BE CAUSE FOR REJECTION. REMOVE ALL BURRS AND SHARP EDGES				

REQ.	ITEM	PART NO.	DESCRIPTION	SYMBOL
STOCK SIZE			THE TECHNICAL MATERIEL CORP. MAMARONECK, NEW YORK	
MATERIAL			CL-303 ASS'Y	
TYPE & TEMPER		HEAT TREAT. SPEC.	DRAWN	CHECKED
FINISH & SPEC. NO.		ELEC. DES. APP.	MECH. DES. APP.	
			<i>Gianfilippo</i>	<i>[Signature]</i>
			<i>[Signature]</i>	<i>[Signature]</i>
			A-3050 A	

THE CONTENTS OF THIS DRAWING ARE THE EXCLUSIVE PROPERTY OF THE TECHNICAL MATERIEL CORP. ITS UNAUTHORIZED USE OR REPRODUCTION IN WHOLE OR IN PART IS STRICTLY FORBIDDEN.

REQ. PER UNIT

2

MODEL

TRC 3500-52U/52B

USED ON

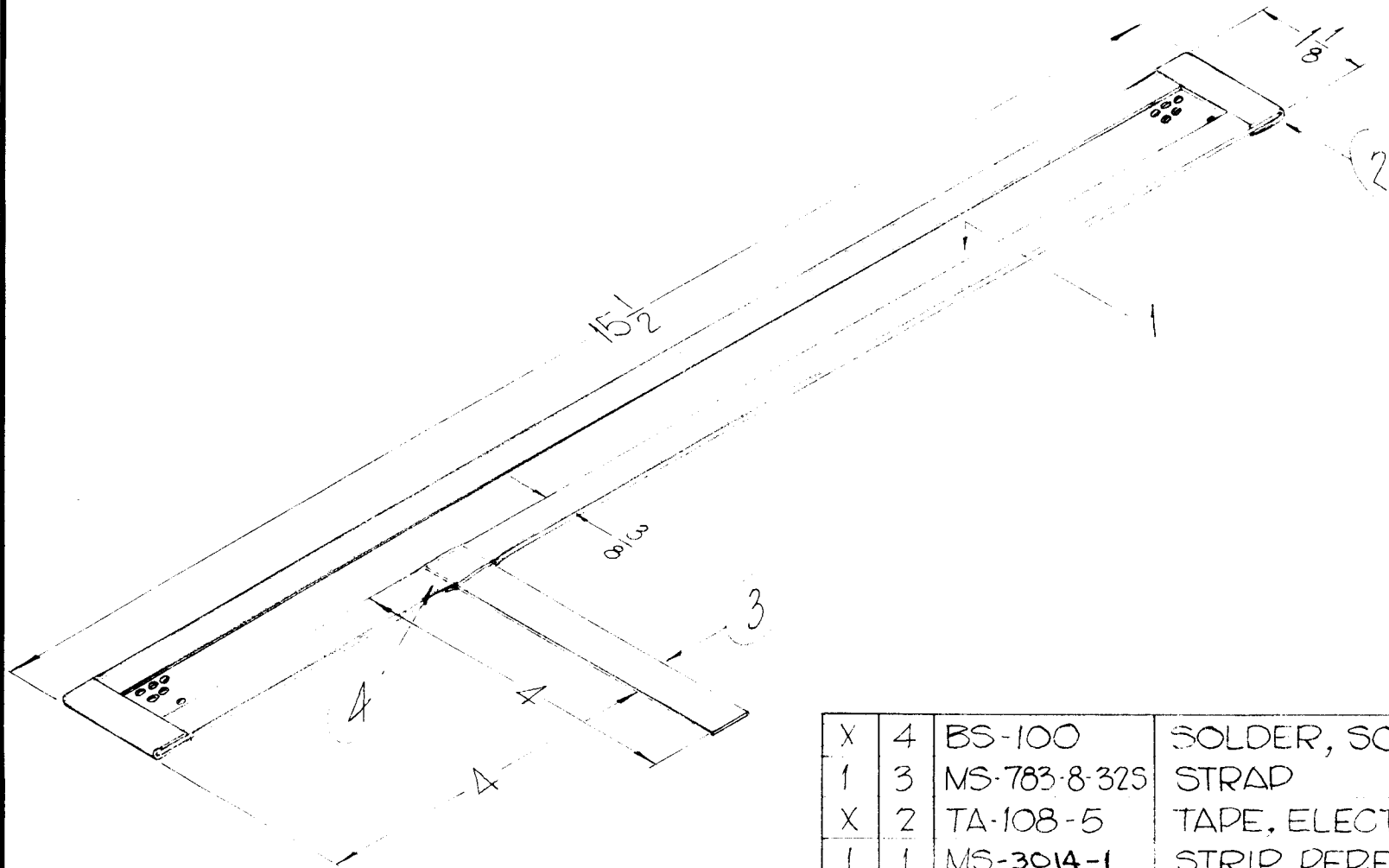
ASS'Y. NO.

A-3067

DATE

8-29-62

A-3065



APPLY AROUND EDGES AND ENDS AS SHOWN.

X	4	BS-100	SOLDER, SOFT
1	3	MS-783-8-325	STRAP
X	2	TA-108-5	TAPE, ELECTRICAL
1	1	MS-3014-1	STRIP, PERFORATED

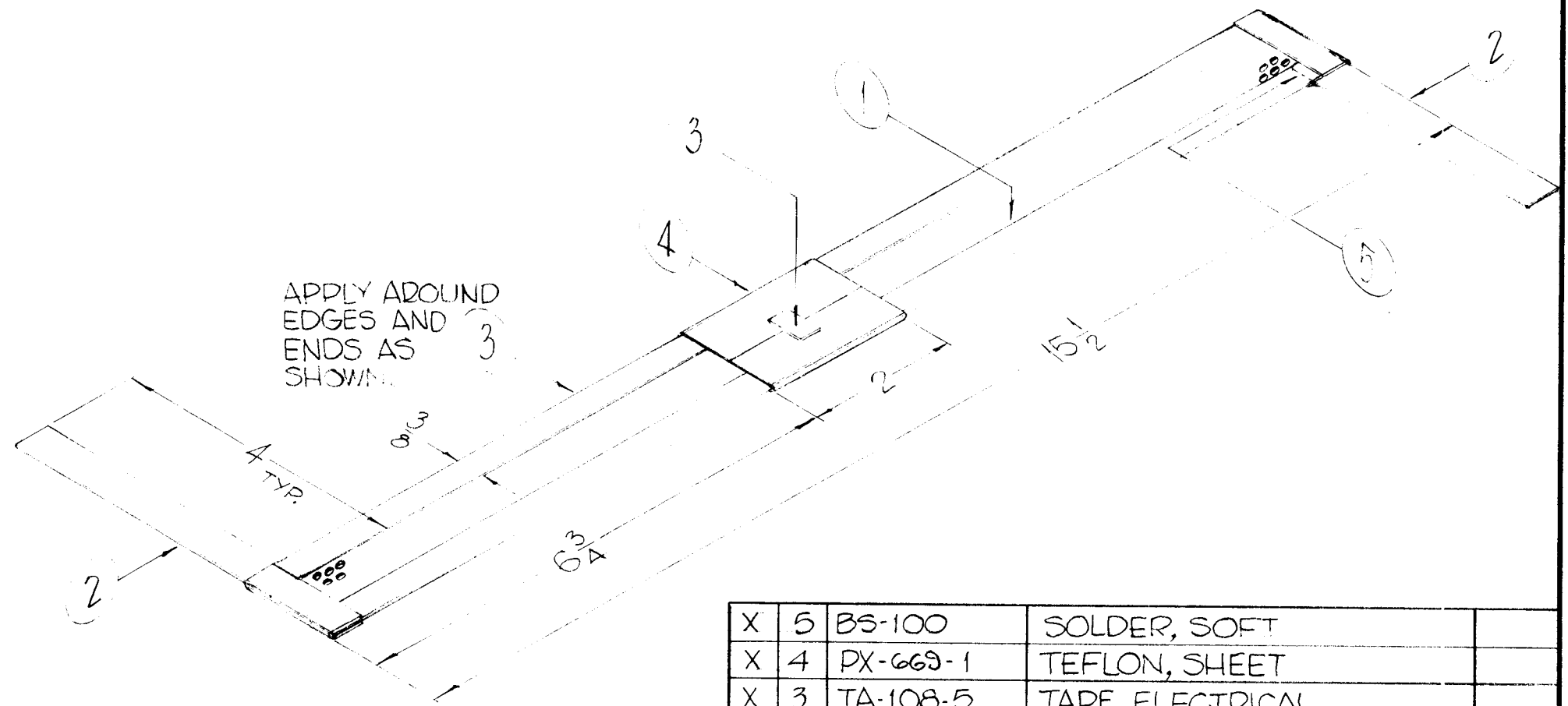
REQ.	ITEM	PART NO.	BUDETTI	DESCRIPTION	SYMBOL	
				THE TECHNICAL MATERIEL CORP.		
				MAMARONECK, NEW YORK		
				RF SHIELD, ASSY		
				MATERIAL		
SYM	DESCRIPTION	DATE	CH. NO.	DRAFTS	CHECKER	ENG. APP.
UNLESS OTHERWISE SPECIFIED: DIMENSIONS ARE IN INCHES TOLERANCES ON FRAC. $\pm 1/64$ DEC. $\pm .005$ ANGLES $\pm 1/2^\circ$		SCALE:				
		MAXIMUM ALLOWABLE TOLERANCES HAVE BEEN DETERMINED AND ANY DEVIATIONS WILL BE CAUSE FOR REJECTION. REMOVE ALL BURRS AND SHARP EDGES				
				John C. Biele	<i>[Signature]</i>	<i>[Signature]</i>
TYPE & TEMPER		HEAT TREAT. SPEC.		DRAWN	CHECKED	FINAL APPROVAL
FINISH & SPEC. NO.		ELEC. DES. APP.		<i>[Signature]</i>	<i>[Signature]</i>	A-3065

THE CONTENTS OF THIS DRAWING ARE THE EXCLUSIVE PROPERTY OF THE TECHNICAL MATERIEL CORP. ITS UNAUTHORIZED USE OR REPRODUCTION IN WHOLE OR IN PART IS STRICTLY FORBIDDEN.

REQ. PER UNIT

USED ON		
MODEL	ASS'Y. NO.	DATE
TRC3500-52U/52B	A-3067	8-29-62

A-3066



X	5	BS-100	SOLDER, SOFT
X	4	PX-669-1	TEFLON, SHEET
X	3	TA-108-5	TAPE, ELECTRICAL
2	2	MS-783-8-32S	STRAP
1	1	MS-1205-12.750	STRIP, PERFORATED

SYM	DESCRIPTION	DATE	CH. NO.	DRAFTS	CHECKER	ENG. APP.
UNLESS OTHERWISE SPECIFIED: DIMENSIONS ARE IN INCHES TOLERANCES ON FRAC. ± 1/64 DEC. ± .05 ANGLES ± 1/2°		SCALE: MAXIMUM ALLOWABLE TOLERANCES HAVE BEEN DETERMINED AND ANY DEVIATIONS WILL BE CAUSE FOR REJECTION. REMOVE ALL BURRS AND SHARP EDGES				

REQ.	ITEM	PART NO.	BUDETTI	DESCRIPTION	SYMBOL
STOCK SIZE			THE TECHNICAL MATERIEL CORP. MAMARONECK, NEW YORK		
MATERIAL			TRANSFORMER WINDING ASSEMBLY		
TYPE & TEMPER		HEATTREAT. SPEC.	DRAWN	CHECKED	FINAL APPROVAL
FINISH & SPEC. NO.		ELEC. DES. APP.	MECH. DES. APP.	A-3066	

THE CONTENTS OF THIS DRAWING ARE THE EXCLUSIVE PROPERTY OF THE TECHNICAL MATERIEL CORP. ITS UNAUTHORIZED USE FOR REPRODUCTION IN WHOLE OR IN PART IS STRICTLY FORBIDDEN.

REQ. PER UNIT

1

MODEL

GPR-92

USED ON

ASS'Y. NO.

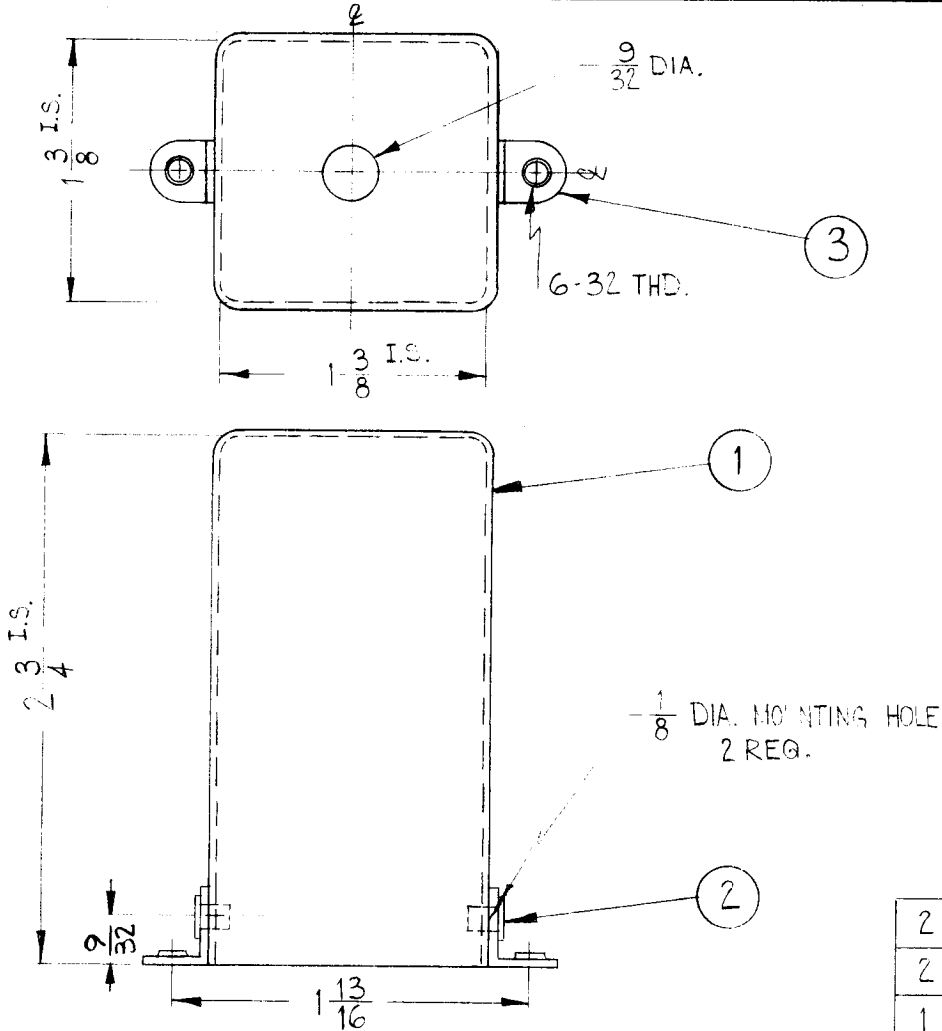
A-2131

DATE

11-1-62

A-3084

A



NOTE:
I.S. = INSIDE

2	3	TE-167	LUG, ANGLE, THREADED
2	2	EY-100-1	EYELET, FLAT FLANGE
1	1	BX-102-7	CAN

REQ.	ITEM	PART NO.	STROHER DESCRIPTION	SYMBOL
			THE TECHNICAL MATERIEL CORP. MAMARONECK. NEW YORK	
			ASSEMBLY, I.F. CAN	
			3.955 MC	
			W.A. FRANCO	
			D. M.	
			BP	
			A-3084	A

THE CONTENTS OF THIS DRAWING ARE THE EXCLUSIVE PROPERTY OF THE TECHNICAL MATERIEL CORP. ITS UNAUTHORIZED USE FOR REPRODUCTION IN WHOLE OR IN PART IS STRICTLY FORBIDDEN.

REQ. PER UNIT

USED ON

MODEL

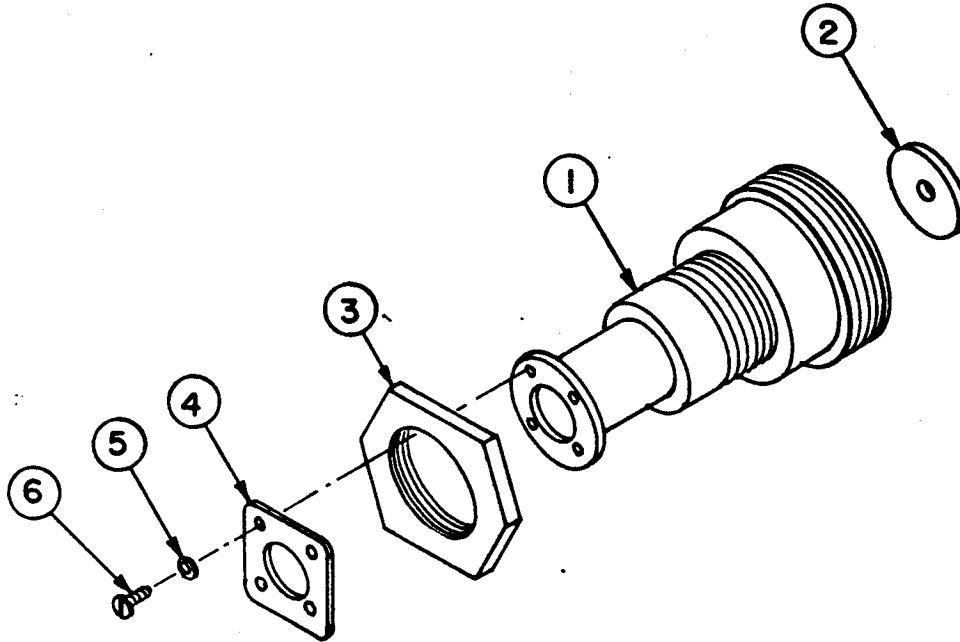
ASS'Y. NO.

DATE

TCA-85/

10-22-62

A-3085



4	6	SCBP0440BN5	SCREW, MACHINE
4	5	LWS04MRN	LOCKWASHER
1	4	GA-149-4	GASKET
1	3	NT-103	MOUNTING NUT
1	2	PX-106	TEFLON WASHER No. 2
1	1	SM-108	ADAPTER

SYM	DESCRIPTION	DATE	CH. NO.	DRAFTS	CHECKER	ENG. APP.	REQ. ITEM	PART NO.	DESCRIPTION	SYMBOL
									THE TECHNICAL MATERIEL CORP. MAMARONECK, NEW YORK	
									ADAPTER ASS'Y, CONNECTOR, FROM ES-85/U TO TCA-85/	
									MATERIAL	
									STOCK SIZE	
									TYPE & TEMPER	
									HEAT TREAT. SPEC.	
									FINISH & SPEC. NO.	
									ELEC. DES. APP.	
									MECH. DES. APP.	
										A-3085

UNLESS OTHERWISE SPECIFIED DIMENSIONS ARE IN INCHES AND INCLUDE CHEMICALLY APPLIED OR PLATED FINISHES

SCALE

DECIMALS
.X ± .05
.XX ± .01
.XXX ± .005

FRACTIONS
± 1/64
ANGLES
± 0° 30'

TOLERANCES

CODE

M.TANTILLO

DRAWN

CHECKED

FINAL APPROVAL

ELEC. DES. APP. MECH. DES. APP.

THE CONTENTS OF THIS DRAWING ARE THE EXCLUSIVE PROPERTY OF THE TECHNICAL MATERIEL CORP. ITS UNAUTHORIZED USE FOR REPRODUCTION IN WHOLE OR IN PART IS STRICTLY FORBIDDEN.

REQ. PER UNIT

USED ON

MODEL

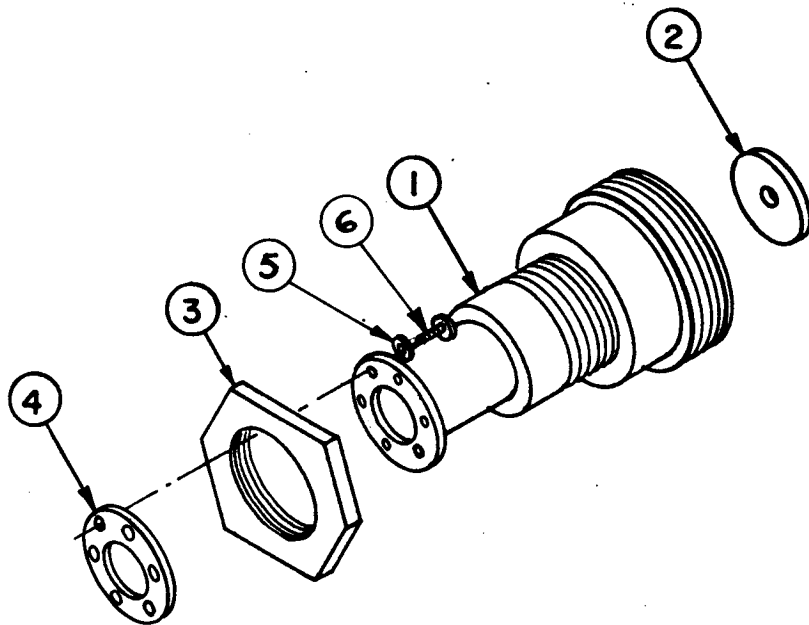
ASSY. NO.

DATE

TCA-85/

10-22-62

A-3086



6	6	SCBP0440BN5	SCREW, MACHINE
6	5	LWS04MRN	LOCKWASHER
1	4	GA-135	GASKET
1	3	NT-103	MOUNTING NUT
1	2	PX-106	TEFLON WASHER No. 2
1	1	SM-135	ADAPTER

SYM	DESCRIPTION	DATE	CH. NO.	DRAFTS	CHECKER	ENG. APP.	REQ. ITEM	PART NO.	DESCRIPTION	SYMBOL
							STOCK SIZE		THE TECHNICAL MATERIEL CORP. MAMARONECK, NEW YORK	
							MATERIAL		ADAPTER ASSY, CONNECTOR, FROM ES-85/U TO TCA-85/	
UNLESS OTHERWISE SPECIFIED DIMENSIONS ARE IN INCHES AND INCLUDE CHEMICALLY APPLIED OR PLATED FINISHES							TYPE & TEMPER		DRAWN	
TOLERANCES							HEAT TREAT. SPEC.		CHECKED	
DECIMALS .X ± .05 .XX ± .01 .XXX ± .005							FINISH & SPEC. NO.		M.TANTILLO <i>[Signature]</i> ELEC. DES. APP. MECH. DES. APP.	
FRACTIONS ± 1/64 ANGLES ± 0° 30'									<i>[Signature]</i> A-3086	
SCALE										
CODE										

THE CONTENTS OF THIS DRAWING ARE THE EXCLUSIVE PROPERTY OF THE TECHNICAL MATERIEL CORP. ITS UNAUTHORIZED USE OR REPRODUCTION IN WHOLE OR IN PART IS STRICTLY FORBIDDEN.

REQ. PER UNIT

1

GPR-92

USED ON

MODEL

ASS'Y. NO.

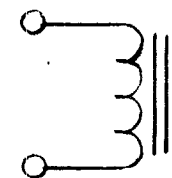
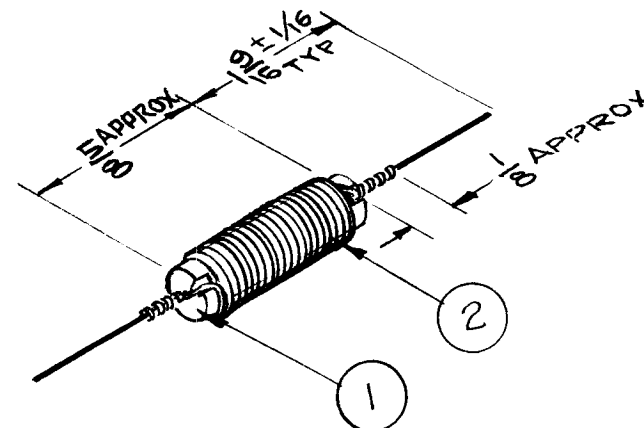
DATE

10-13-62

A-3090

WINDING DATA

- WIND 30 TURNS ITEM 2 ON ITEM 1.
- STRIP WIRE ENDS 1/2" LONG.
- WRAP STRIPPED ENDS OF WIRE AROUND AXIAL LEADS AS SHOWN & SOLDER USING ITEM 3.
- CHECK R, L & Q.
- BAKE FOR 1/2 HOUR AT 215°F.
- SATURATE COIL ASS'Y WITH ITEM 4



SCHEMATIC

TEST DATE

Q = 80 - 90
 FEQ. = 7.95 MCS
 R = 0
 L = << 9uhy

X	4	GL-104-2	RESIN, SYNTHETIC
X	3	BS-100	SOLDER, SOFT
X	2	WI-123-26	MAGNET WIRE, HEAVY
1	1	CI-114	CORE, POWDERED IRON

SYM	DESCRIPTION	DATE	CH. NO.	DRAFTS	CHECKER	ENG. APP.	REQ. ITEM	PART NO.	DESCRIPTION	SYMBOL
							SYM: L III		THE TECHNICAL MATERIEL CORP.	
							STOCK SIZE		MAMARONECK, NEW YORK	
									CL-306 ASS'Y	
							MATERIAL		COIL, R.F.	
UNLESS OTHERWISE SPECIFIED:							SCALE:		G.D.L.	
DIMENSIONS ARE IN INCHES							MAXIMUM ALLOWABLE TOLERANCES HAVE BEEN DETERMINED AND ANY DEVIATIONS WILL BE CAUSE FOR REJECTION.		JMA BP	
TOLERANCES ON							REMOVE ALL BURRS AND SHARP EDGES		DRAWN	
FRAC. ± 1/64 DEC. ± .005 ANGLES ± 1/2°									CHECKED	
							FINISH & SPEC. NO.		ELEC. DES. APP.	
									MECH. DES. APP.	
									A-3090	

THE CONTENTS OF THIS DRAWING ARE THE EXCLUSIVE PROPERTY OF THE TECHNICAL MATERIEL CORP. ITS UNAUTHORIZED USE FOR REPRODUCTION IN WHOLE OR IN PART IS STRICTLY FORBIDDEN.

REQ. PER UNIT
2

MODEL
GPR-92

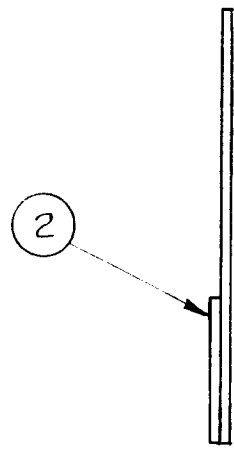
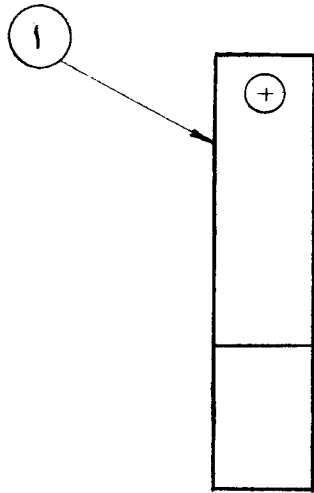
USED ON

ASS'Y. NO.

DATE

11-7-62

A-3093 A



X	3	GL-101-1	CEMENT, PLIOBOND
1	2	RY-148-2	SHEET, RUBBER
1	1	SP-143	FLAT, SPRING

A	ITEM 2 WAS RY123-5	4/29/64	11325	A.M.	@	ms
SYM	DESCRIPTION	DATE	CH. NO.	DRAFTS	CHECKER	ENG. APP.
UNLESS OTHERWISE SPECIFIED DIMENSIONS ARE IN INCHES AND INCLUDE CHEMICALLY APPLIED OR PLATED FINISHES		SCALE DO NOT SCALE				
DECIMALS .X ± .05 .XX ± .01 .XXX ± .005	TOLERANCES	FRACTIONS ± 1/64 ANGLES ± 0° 30'	CODE			

REQ. ITEM	PART NO.	STRUMER	DESCRIPTION	SYMBOL
STOCK SIZE		THE TECHNICAL MATERIEL CORP. MAMARONECK. NEW YORK		
MATERIAL		SPRING ASSY, CAM		
TYPE & TEMPER		HEAT TREAT. SPEC.	DRAWN	CHECKED
FINISH & SPEC. NO.		ELEC. DES. APP.	MECH. DES. APP.	
		G.D.L.	<i>JWA</i>	<i>BP</i>
		<i>JMA</i>	D.M.	A-3093 A

THE CONTENTS OF THIS DRAWING ARE THE EXCLUSIVE PROPERTY OF THE TECHNICAL MATERIEL CORP. ITS UNAUTHORIZED USE FOR REPRODUCTION IN WHOLE OR IN PART IS STRICTLY FORBIDDEN.

REQ. PER UNIT

2

GPR-92

USED ON

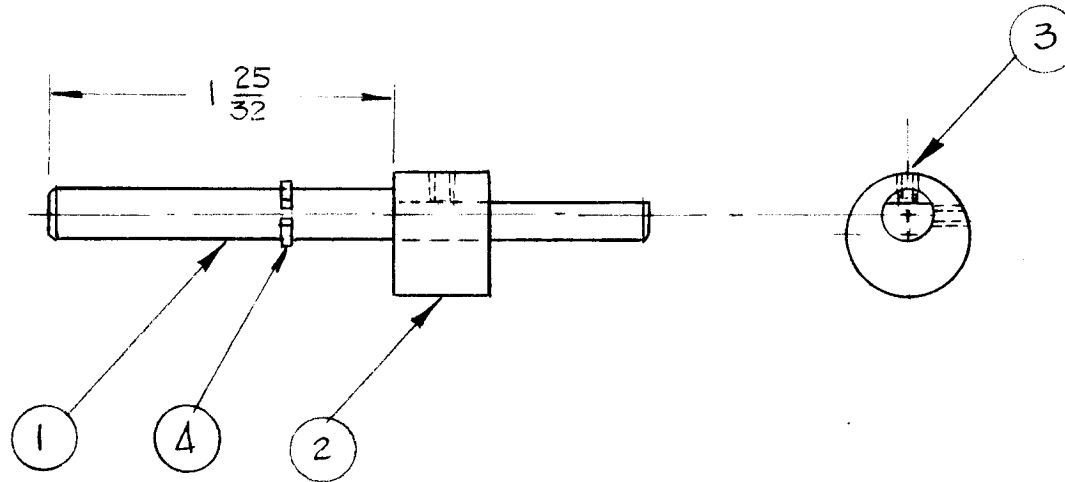
MODEL

ASS'Y. NO.

DATE

11-20-62

A-3095

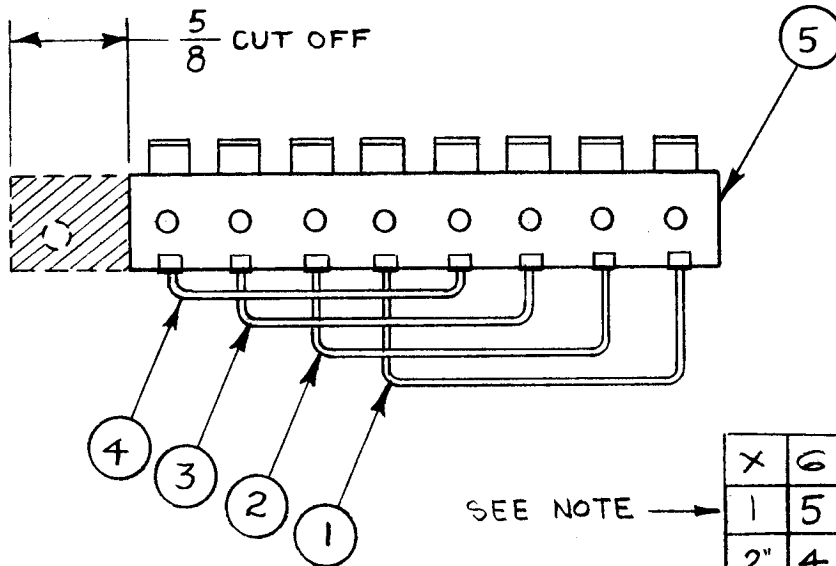


1	4	WA-112	RING, RETAINING
2	3	SLHC03485N2	SET SCREW
1	2	PM-817	CAM, LOCK, TUNING
1	1	PM-818	SHAFT, CAM, LOCK

REQ.	ITEM	PART NO.	STRUMER	DESCRIPTION	SYMBOL	
				THE TECHNICAL MATERIEL CORP. MAMARONECK. NEW YORK		
			STOCK SIZE	CAM ASSY, LOCK		
			MATERIAL			
SYM	DESCRIPTION	DATE	CH. NO.	DRAFTS	CHECKER	ENG. APP.
	UNLESS OTHERWISE SPECIFIED DIMENSIONS ARE IN INCHES AND INCLUDE CHEMICALLY APPLIED OR PLATED FINISHES	SCALE 1:1				
DECIMALS .X ± .05 .XX ± .01 .XXX ± .005	TOLERANCES	FRACTIONS ± 1/64 ANGLES ± 0° 30'	CODE			
			TYPE & TEMPER	HEAT TREAT. SPEC.	DRAWN	CHECKED
					G.D.L.	<i>[Signature]</i>
					<i>[Signature]</i>	<i>[Signature]</i>
			FINISH & SPEC. NO.	REC. DES. APP.	MECH. DES. APP.	A-3095

THE CONTENTS OF THIS DRAWING ARE THE EXCLUSIVE PROPERTY OF THE TECHNICAL MATERIEL CORP. ITS UNAUTHORIZED USE FOR REPRODUCTION IN WHOLE OR IN PART IS STRICTLY FORBIDDEN.

REQ. PER UNIT	USED ON			A-3097	A
	MODEL	ASS'Y. NO.	DATE		
	2	DDR-6D	1/7/63		



NOTE:
 REMOVE SHADED AREA BEFORE ASSEMBLY.
 AFTER CRIMPING TERMINALS SOLDER ALL CONNECTIONS

X	6	BS-100	SOLDER, SOFT	
1	5	TM105-8-AL	FANNING STRIP (MOD.)	
2"	4	MWC 22(7)U4	WIRE, INSULATED	YEL
2"	3	MWC 22(7)U3		ORN
2"	2	MWC 22(7)U2		RED
2"	1	MWC 22(7)U1	WIRE, INSULATED	BRN

A	TITLE WAS "FANNING STRIP ASSY. JUMPER" ITEMS 1-4 REQ WAS "I", "MWC" WAS "LWC"	3-14-63	8532	RC	JMS		
SYM	DESCRIPTION	DATE	CH. NO.	DRAFTS	CHECKER	ENG. APP.	
UNLESS OTHERWISE SPECIFIED DIMENSIONS ARE IN INCHES AND INCLUDE CHEMICALLY APPLIED OR PLATED FINISHES		SCALE		FULL			
DECIMALS .X ± .05 .XX ± .01 .XXX ± .005	TOLERANCES	FRACTIONS ± 1/64 ANGLES ± 0° 30'	CODE				

REQ. ITEM	PART NO.	STRUMER	DESCRIPTION	SYMBOL
STOCK SIZE		THE TECHNICAL MATERIEL CORP. MAMARONECK. NEW YORK		
		TERMINAL BOARD JUMPER ASSY		
MATERIAL		4 WIRE		
TYPE & TEMPER	HEAT TREAT. SPEC.	DRAWN	CHECKED	FINAL APPROVAL
		JMS	JMS	BP
FINISH & SPEC. NO.		LEC. DES. APP.	MECH. DES. APP.	A-3097 A