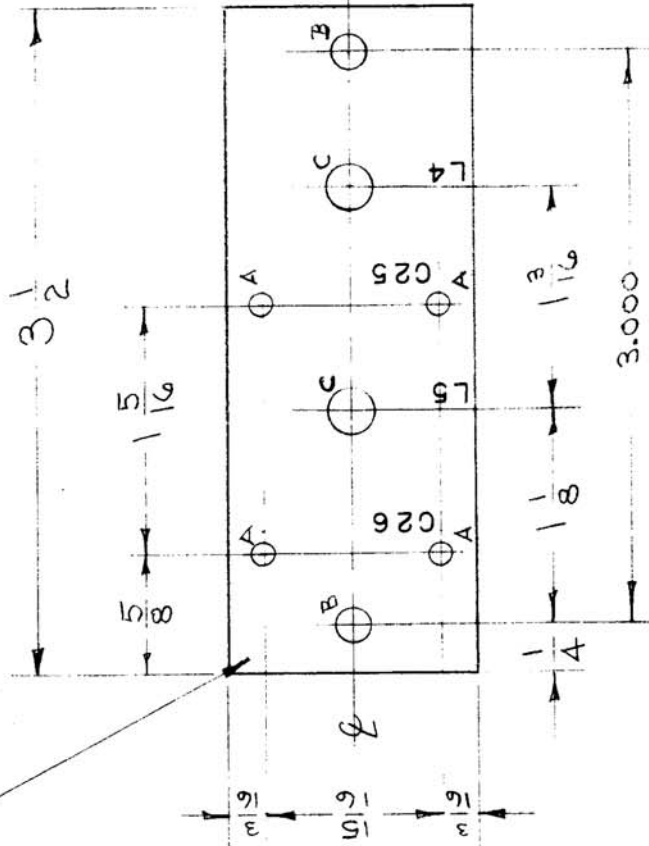


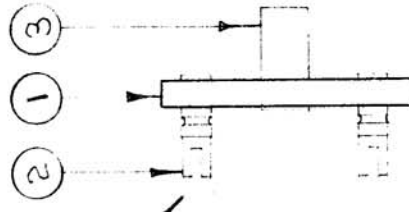
IF IT IS FOUND DESIRABLE TO CHANGE ANY TOLERANCE OR OTHER DETAIL SPECIFIED ON THIS DRAWING NOTIFY THE PURCHASER PROMPTLY.

MAXIMUM ALLOWABLE TOLERANCES HAVE BEEN DETERMINED AND DEVIATIONS WILL BE CAUSE FOR REJECTION. REMOVE ALL BURRS AND SHARP EDGES

TERMINALS ON THIS SIDE.
STAMP BOARD AS SHOWN.



NOTE POSITION OF TERMINALS



SYM	DESCRIPTION	REQ
A	#2-9(.114)DRILL	4
B	#12(.189)DRILL	2
C	1/4 DIA	2

MARKING PROCESS: AS PER TMC SPECIFICATION S-727.

LETTERING: 1/8 HIGH BLACK, GOTHIC LOCATED AS SHOWN.

ISSUE ITEM	CHANGED FROM	DATE	CN. NO.	DRAFTS CHECKER	ENG. APP.
B	NO. 2.9 DRILL WAS 2.0	4-27-53	2	WJ	
A	REBORN - ITEM 3 ADDED	6/9/53	1	C.D.D.	PJB

TOLERANCES	
DEC. DIM.	± .005
FRAC. DIM.	± 1/64
ANGULAR DIM.	±

DRILL, PUNCH, COMMERCIAL STOCK SIZES AND MANUFACTURERS TOLERANCES ARE NOT INCLUDED.

A-386 B.

USED ON		
MODEL	PROJECT NO.	ASSY. NO.
DVM	199	

DATE
6-9-53

REQ. ITEM	PART NO.	DESCRIPTION	SYMBOL
2	TE-108-13	STANDOFF, RIVET TYPE	
4	TE-109-3	TERMINAL, TURRET	
1	PX-143	BOARD, TERM. (DRAWING)	
V8 (.125)		THE TECHNICAL MATERIEL CORP. MAMARONECK. NEW YORK	
PHENOLIC		TERM. BD. NO. 2 ASSEMBLY	
MATERIAL		100 KC TRANSFORMER	
XXXP LAMINATE		C.D.D. 6-9-53	
TYPE & TEMPER		DRAWN	
WEIGHT PER PC.		ELEC. DES. APP.	
HEAT TREAT. SPEC.		MECH. DES. APP.	
FINISH & SPEC. NO.		CHECKED	
		FINAL APPROVAL	
		A-386	B