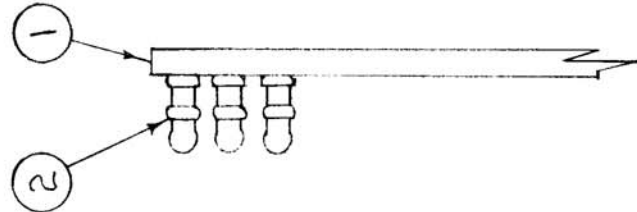
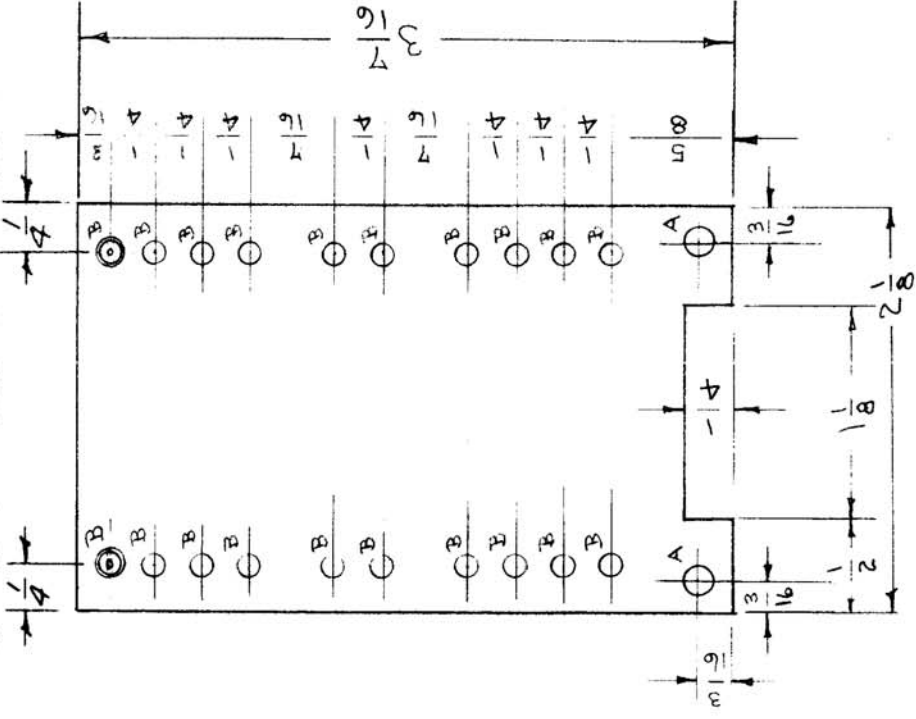


IF IT IS FOUND DESIRABLE TO CHANGE ANY TOLERANCE OR OTHER DETAIL SPECIFIED ON THIS DRAWING NOTIFY THE PURCHASER PROMPTLY.

MAXIMUM ALLOWABLE TOLERANCES HAVE BEEN DETERMINED AND DEVIATIONS WILL BE CAUSE FOR REJECTION. REMOVE ALL BURRS AND SHARP EDGES

A - NO. 27 (.144) DR. 2 HOLES REQ'D.
 B - NO. 31 (.120) DR. 2 HOLES REQ'D.



A-369

USED ON		
MODEL	PROJECT NO.	ASSY. NO.
FX-101	121	A-371
FX-102	121	A-441
FX-100-	170	A-781

DATE
 4-6-53
 4-16-53
 10-11-54

C

TE-137-7

PX-131

1/8 (.125) THK.

PHENOLIC

MATERIAL

XXXP LAMINATE

TYPE & TEMPER

HEAT TREAT. SPEC.

FINISH & SPEC. NO.

REQ. ITEM

PART NO.

STOCK SIZE

WEIGHT PER PC.

20 2

1 1

LUG, TERMINAL, BEAD BOARD, TERMINAL (DRAWING NO)

DESCRIPTION

SYMBOL

THE TECHNICAL MATERIEL CORP.

MAMARONECK, NEW YORK

TERMINAL BOARD SUB-ASSY.

FILTER

C.D.D. 2-2-53

A. J. J.

DRAWN

ELEC. DES. APP.

MECH. DES. APP.

CHECKED

FINAL APPROVAL

SUPERCEDES

ENG. DWG

1-187-

A-369

C

SCALE

TOLERANCES

DEC. DIM. ±

FRAC. DIM. ±

AN ULAR DIM. ±

DRILL, PUNCH, COMMERCIAL STOCK SIZES AND MANUFACTURERS TOLERANCES ARE NOT INCLUDED.