

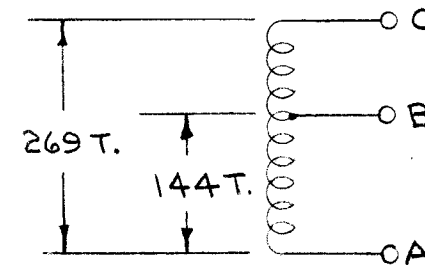
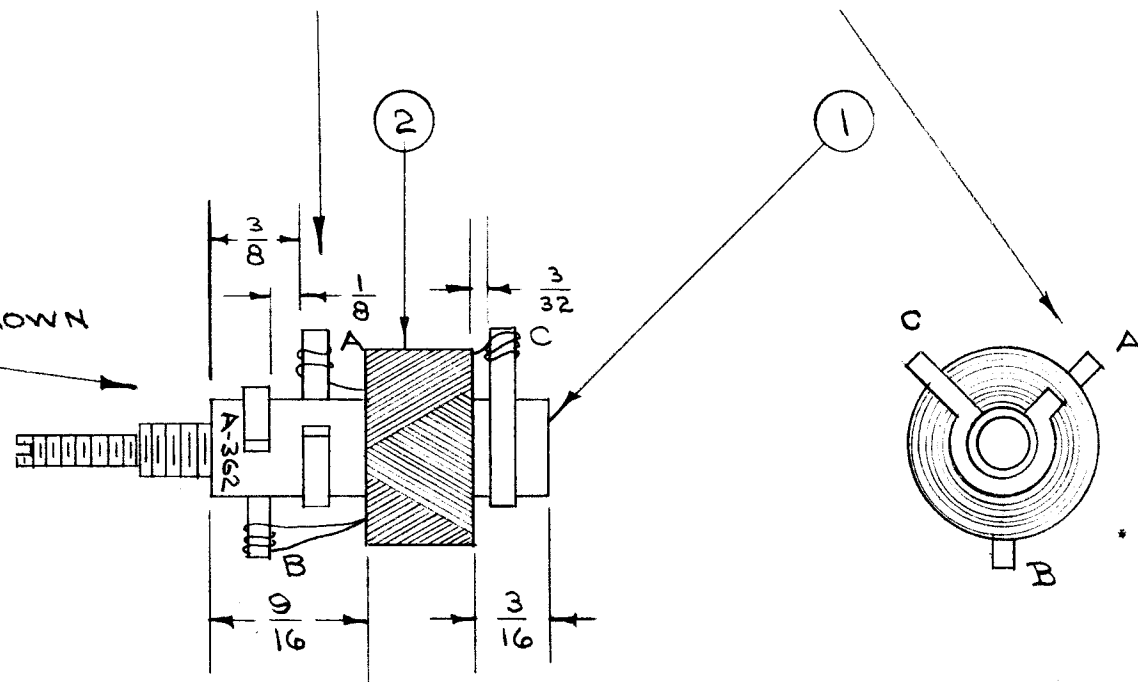
IF IT IS FOUND DESIRABLE TO CHANGE ANY TOLERANCE OR OTHER DETAIL SPECIFIED ON THIS DRAWING NOTIFY THE PURCHASER PROMPTLY.

MAXIMUM ALLOWABLE TOLERANCES HAVE BEEN DETERMINED AND DEVIATIONS WILL BE CAUSE FOR REJECTION. REMOVE ALL BURRS AND SHARP EDGES

A-362 D

START WINDING ON A

NOTE-  
USE 3 RINGS AS SHOWN



AC L MIN. = 700  $\mu$ h.      F = 790 KC      Q = 40  
 AB L MIN. = 265  $\mu$ h      F = 790 KC      Q = 40  
 WITH C = 220  $\mu$ f +      F = 350 KC. ADJUST SLUG  
 TO RESONANCE. CHECK TO SEE THAT SLUG IS  
 APPROXIMATELY HALF WAY INTO COIL.      Q = 45

WINDING DATA:

CAM WIDTH .375  
 GEARS { DRIVER 43  
           CAM 88

TOTAL - 269 TURNS TAPPED AT  
 144<sup>th</sup> FROM START

NOTE:

LAST TURN (269<sup>th</sup>) HELD IN PLACE WITH ITEM 3.  
 SOLDER LEADS TO COIL LUGS AS SHOWN.  
 PAINT COIL WITH WITH ITEM 4 AND BAKE  
 FOR 1 HOUR AT 100° C.

(YELLOW SLUG) →  
 Long

REQ. 1 PER UNIT

X	5	BS-100	SOLDER, SOFT	
X	4	GL-104-2	INSULEX	
X	3	GL-103	CEMENT	
X	2	WI-104-3	WIRE, LITZ	
1	1	CF-107-3N	COIL FORM (WITH 3 LUGS)	
REQ.	ITEM	PART NO.	DESCRIPTION	SYMBOL
STOCK SIZE			THE TECHNICAL MATERIEL CORP.	
			MAMARONECK. NEW YORK	
MATERIAL			OSC. COIL ASSEMBLY	
WEIGHT PER PC.			L 6	
TYPE & TEMPER			CD.D. 6-8-53	G.T.O
			DRAWN	ELEC. DES. APP. MECH. DES. APP.
HEAT TREAT. SPEC.			CHECKED	FINAL APPROVAL
FINISH & SPEC. NO.			G.T.O	A-362 D.

D	1	ITEM 1 WAS CF-107-2N	11/2/54	4	EDS	JAL	G.T.O
C	1	CF-107-3	11/17/53	3	JAL	JAL	G.T.O
B	1	ELECTRICAL DATA CHANGED	8/30/53	2	16	JAL	G.T.O
A	1	REDRAWN - ELECTRICAL DATA ADDED	6-8-53	1	C.D.D.	JAL	G.T.O
ISSUE	ITEM	CHANGED FROM	DATE	CN. NO.	DRAFTS	CHECKER	ENG. APP.
TOLERANCES		SCALE: 1					
ALL OTHERS	DEC. DIM. ± FRAC. DIM. ± ANGULAR DIM. ±	DRILL, PUNCH, COMMERCIAL STOCK SIZES AND MANUFACTURERS TOLERANCES ARE NOT INCLUDED.					
DVM		199		6-8-53		USED ON	
MODEL		PROJECT NO.		ASS'Y. NO.		DATE	