

A-337 C

IF IT IS FOUND DESIRABLE TO CHANGE ANY TOLERANCE OR OTHER DETAIL SPECIFIED ON THIS DRAWING NOTIFY THE PURCHASER PROMPTLY.

MAXIMUM ALLOWABLE TOLERANCES HAVE BEEN DETERMINED AND DEVIATIONS WILL BE CAUSE FOR REJECTION. REMOVE ALL BURRS AND SHARP EDGES



Coil Form- H. L. Crowley Pigtail.
Coil Form #3334. 1/4 Diam. X 1-3/4 Long.
(TMC Part CI-102-1)

WINDING:
First four pies-40 turns each.) Counter must not be reset.
Fifth pie-33 turns.)
Total number of Turns-193.) Peel turns from last coil to trim to ind. above.

UNIVERSAL WINDING:
Gears (Driver-51
(Can-56

Car Width- 1/8
Wire- #34 D.S.C. WI-107-15

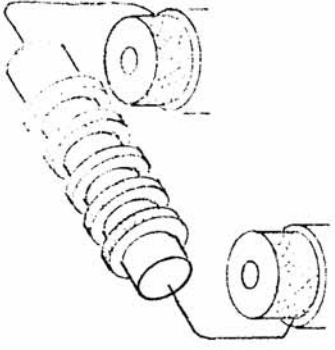
NOTES:
1. Use spotting cement where necessary.
2. Bake coil out for 30 minutes at 100° C.
3. Paint coil with insul-X-U-55 and bake 1 hour at 100° C.

ISSUE CHANGED FROM DATE CN. NO. DRAFTS CHECKER ENG. APP.
C OBSOLETE REPLACED BY CL456 10/27/53 20051 W
SCALE

TOLERANCES
DEC. DIM. ±
FRAC. DIM. ±
OTHER ANGULAR DIM. ±
DRILL, PUNCH, COMMERCIAL STOCK SIZES AND MANUFACTURERS TOLERANCES ARE NOT INCLUDED.

OBSOLETE
REPLACED BY
CL 265

MODEL	PROJECT NO.	ASSY. NO.	DATE
X-107-15		A-337 C	
2			



NOTE:

Lead length between coil and Q meter terminals shall be 1" and coil shall be elevated directly over terminals.
Inductance must be calibrated against the supplied standard $\pm 1\%$ at 790 Kc.
Q must be greater than 100.

Nominal Inductance: 250 μH

REQ. ITEM	PART NO.	DESCRIPTION	SYMBOL
X 2	WI-107-15	WIRED D.S.C	
1	CI-102-1	FORM COIL	
STOCK SIZE			
MATERIAL		WEIGHT PER PC.	
TYPE & TEMPER		ELEC. DES. APP.	
HEAT TREAT. SPEC.		MECH. DES. APP.	
FINISH & SPEC. NO.		FINAL APPROVAL	

THE TECHNICAL MATERIEL CORP.
MAMARONECK, NEW YORK

200 KC OSC.

Coils LI-L2 Inductor Fixed

A-337 C