

THE CONTENTS OF THIS DRAWING ARE THE EXCLUSIVE PROPERTY OF THE TECHNICAL MATERIEL CORP. ITS UNAUTHORIZED USE FOR REPRODUCTION IN WHOLE OR IN PART IS STRICTLY FORBIDDEN.

REQ. PER UNIT

USED ON

MODEL

ASS'Y. NO.

DATE

1

TTRA-3

A-2696

A-2700

C

ITEM NO.	SYMBOL(S)	ITEM NO.	USED TO MOUNT	QUAN.
1	CI301	4	DELETED	
3	TI301	5	CV-113-1	1
		6	TZ-116	1
		7	TE-102-2	
		8	CV-113-1	1
		9	TZ-116	1
		10	DELETED	
		11	TZ-116	1
		12	TE-102-2	1
		13	CV-113-1	1

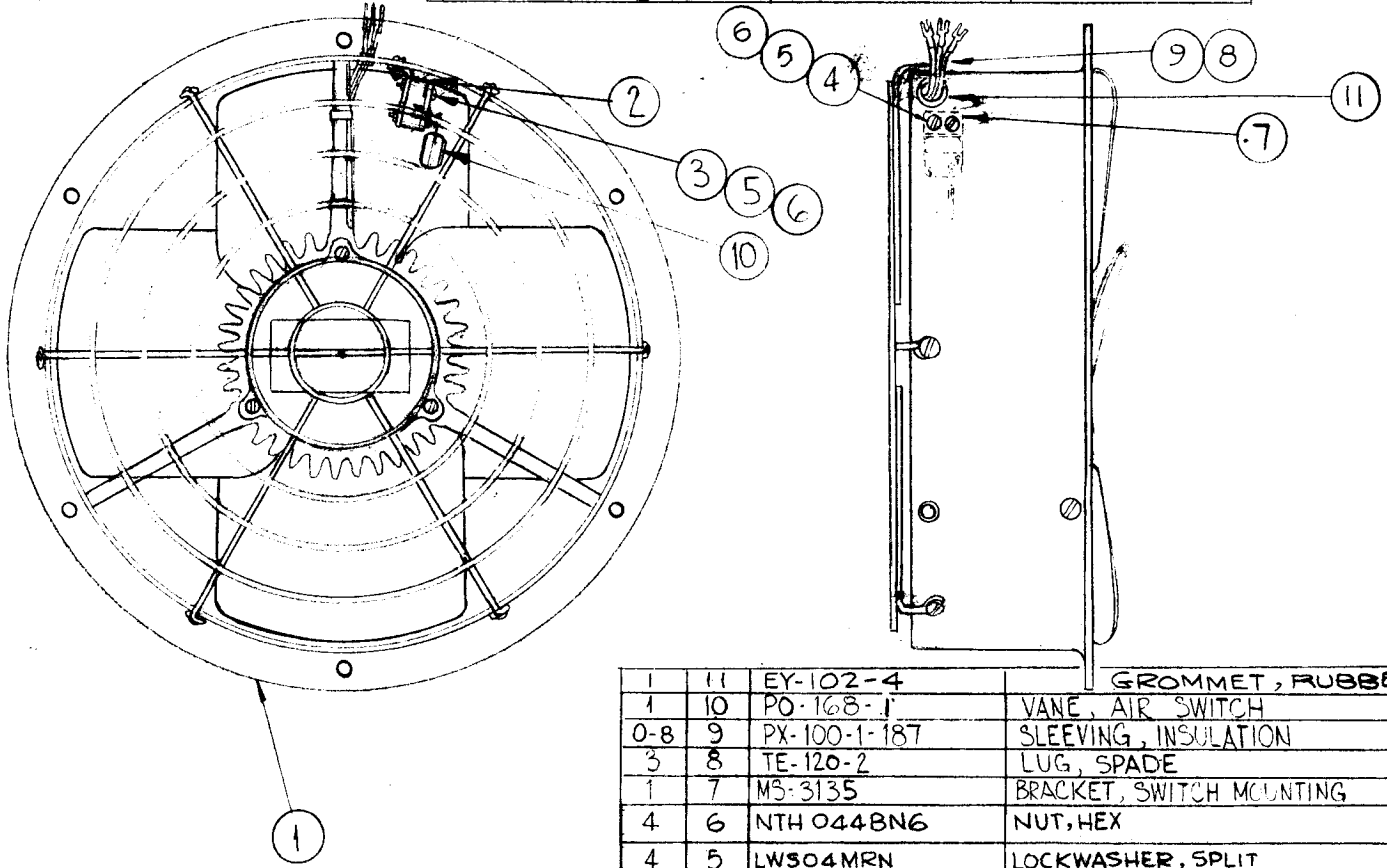
1	14	TE 102-2	TERMINAL, STUD-INSULATED
1	13	SCBP0632BN5	SCREW, MACHINE
1	12	SCBP0440BN5	SCREW, MACHINE
1	11	SC-143-0632B10	SCREW, MACHINE, NYLON
	10	DELETED	
1	9	NT-137-0632	NUT, HEX, NYLON
1	8	LWE06MRN	WASHER, LOCK, EXTERNAL
1	7	LWE04MRN	WASHER, LOCK, EXTERNAL
1	6	FW-101-1	WASHER, FLAT, NYLON
1	5	FW06HBN	WASHER, FLAT
1	4	FW04HBN	WASHER, FLAT
1	3	TZ-116	TRANSFORMER, RF, IFT
1	2	LD-1308/PX-811	BOARD, IFT
1	1	CV-113-5	CAPACITOR, VARIABLE, MICA, IPA TUNE

C	B/M: IT, 10(NTH0440BN6) DELE.	2.4.65	13085	92	JCF		REQ. ITEM	PART NO.	DESCRIPTION	SYMBOL	
B	ON UNIT: IT 4, 10 PX-811 SHIELD DELE. IT. 7 & 12 WERE PX-811 SHIELD ON B/M: IT, 4, FW04HBN, IT, 10, NTH0440BN6, DELETED. IT, 14 ADD.	10.7.64	12559	92	@	JCF			THE TECHNICAL MATERIEL CORP. MAMARONECK. NEW YORK		
A	CLERICAL CHANGE	8.24.64		10B	@	JCF			BOARD ASSEMBLY, IFT		
SYM	DESCRIPTION	DATE	CH. NO.	DRAFTS	CHECKER	ENG. APP.					
UNLESS OTHERWISE SPECIFIED DIMENSIONS ARE IN INCHES AND INCLUDE CHEMICALLY APPLIED OR PLATED FINISHES		SCALE								ETSA	J. Medico
										6/2/63	BP
							TYPE & TEMPER	HEAT TREAT. SPEC.	DRAWN	CHECKED	FINAL APPROVAL
									R KOHN	16	
											A-2700
							FINISH & SPEC. NO.		ELEC. DES. APP.	MECH. DES. APP.	C
DECIMALS .X ± .05 .XX ± .01 .XXX ± .005		FRACTIONS ± 1/64 ANGLES ± 0° 30'		CODE A							

THE CONTENTS OF THIS DRAWING ARE THE EXCLUSIVE PROPERTY OF THE TECHNICAL MATERIEL CORP. ITS UNAUTHORIZED USE OR REPRODUCTION IN WHOLE OR IN PART IS STRICTLY FORBIDDEN.

REQ. PER UNIT	USED ON		
	MODEL	ASS'Y. NO.	DATE
1	GPT-200K	AP-109	1-9-63
1	GPT-200K	AP-111	5-31-63

A-2703 B



1	11	EY-102-4	GROMMET, RUBBER	
1	10	PO-168-1	VANE, AIR SWITCH	
0-8	9	PX-100-1-187	SLEEVING, INSULATION	BLACK
3	8	TE-120-2	LUG, SPADE	
1	7	MS-3135	BRACKET, SWITCH MOUNTING	
4	6	NTH 044B N6	NUT, HEX	
4	5	LWS04MRN	LOCKWASHER, SPLIT	
2	4	SCBP0440B N6	SCREW, MACHINE	
2	3	SCBP0440B N14	SCREW, MACHINE	
1	2	SW-252	SWITCH, AIRFLOW	
1	1	BL-114	FAN, TUBE AXIAL	

B	IT. 10 WAS PO-168-3	6-22-65	14272	D.V.V.	<i>JCB</i>	<i>JSB</i>
A	IT. 10 WAS PO-168-6	5-14-65	14081	CWL	<i>JL</i>	<i>JSB</i>
O	ORIGINAL RELEASE	5.16.64		<i>JSB</i>		
X3	ITEM 11, ADDED					
SYM	DESCRIPTION	DATE	CH. NO.	DRAFTS	CHECKER	ENG. APP.

REQ.	ITEM	PART NO.	F. BUDETTI	DESCRIPTION	SYMBOL
THE TECHNICAL MATERIEL CORP. MAMARONECK, NEW YORK FAN, SUB-ASS'Y, TUBE AXIAL					
STOCK SIZE					
MATERIAL					
		SRG	aa	<i>RSC</i>	
TYPE & TEMPER		HEAT TREAT. SPEC.	DRAWN	CHECKED	FINAL APPROVAL
			<i>20</i>	<i>Widely</i>	A-2703 B
FINISH & SPEC. NO.			ELEC. DES. APP.	MECH. DES. APP.	

UNLESS OTHERWISE SPECIFIED:
 DIMENSIONS ARE IN INCHES
 TOLERANCES ON
 FRAC. ± 1/64 DEC. ± .005 ANGLES ± 1/2°

SCALE:
 MAXIMUM ALLOWABLE TOLERANCES HAVE BEEN DETERMINED AND ANY DEVIATIONS WILL BE CAUSE FOR REJECTION.
 REMOVE ALL BURRS AND SHARP EDGES

THE CONTENTS OF THIS DRAWING ARE THE EXCLUSIVE PROPERTY OF THE TECHNICAL MATERIEL CORP. ITS UNAUTHORIZED USE FOR REPRODUCTION IN WHOLE OR IN PART IS STRICTLY FORBIDDEN.

REQ. PER UNIT	USED ON		A-2707	A
	MODEL	ASS'Y. NO.		
1	TTRA-1	A-2708	6-21-63	

ITEM NO.	SYMBOL(S)	ITEM NO.	USED TO MOUNT	QUAN.
1	C1102	5	TE-102-2	1
2	C1101	6	CV-113-4	1
4	T1101	7	TZ-117	1
		8	TE-102-2	1
		9	CV-113-4	1
		10	TZ-117	1
		11	TZ-117	1
		12	TE-102-2	1
		13	CV-113-4	1
		14	CM20 WIRING	1
		16	TE-102 WIRING	0-1

0-1	16	WL-100-4	WIRE, BUSS, SIZE 16
X	15	BS-100	SOLDER, SOFT
1	14	TE-102-2	TERMINAL, TURRET
1	13	SCBP0632BN5	SCREW, MACHINE
1	12	SCBP0440BN5	SCREW, MACHINE
1	11	SC-143-0632B10	SCREW, MACHINE, NYLON
1	10	NT-137-0632	NUT, HEX, NYLON
1	9	LWE06MRN	WASHER, LOCK, EXTERNAL
1	8	LWE04MRN	WASHER, LOCK, EXTERNAL
1	7	FW-101-1	WASHER, FLAT, NYLON
1	6	FW06HBN	WASHER, FLAT
1	5	FW04HBN	WASHER, FLAT
1	4	TZ-117	TRANSFORMER, RF, IFT
1	3	LD-1306/PX-811	BOARD, IFT
1	2	CV-113-4	CAPACITOR, VARIABLE, MICA
1	1	Q420B152K	CAPACITOR, FIXED, MICA

REQ.	ITEM	PART NO.	DESCRIPTION	SYMBOL
THE TECHNICAL MATERIEL CORP. MAMARONECK. NEW YORK				
STOCK SIZE				
BOARD ASSEMBLY, IFT				
MATERIAL				
UNLESS OTHERWISE SPECIFIED DIMENSIONS ARE IN INCHES AND INCLUDE CHEMICALLY APPLIED OR PLATED FINISHES			SCALE	
TOLERANCES		FRACTIONS	CODE	
.X ± .05		± 1/64	A	
.XX ± .01		ANGLES		
.XXX ± .005		± 0° 30'		
TYPE & TEMPER		HEAT TREAT. SPEC.	DRAWN	CHECKED
			R. KOHN	6/21/63
FINISH & SPEC. NO.		ELEC. DES. APP.	MECH. DES. APP.	
				A-2707
				A

THE CONTENTS OF THIS DRAWING ARE THE EXCLUSIVE PROPERTY OF THE TECHNICAL MATERIEL CORP. ITS UNAUTHORIZED USE FOR REPRODUCTION IN WHOLE OR IN PART IS STRICTLY FORBIDDEN.

REQ. PER UNIT	USED ON		A-2708	B
	MODEL	ASS'Y. NO.		
1	TTR-10	AX-409	6-21-63	

ITEM NO.	USED TO MOUNT	QUAN.
4	A-2707	2
5	A-2707	2
	MS-3344	2
6	A-2707	2
7	MS-3344	2
8	A-2707	2
10	WIRING	X
11	CV-113-4 WIRING	0-2
12	CV-113-4 WIRING	0-2
13	TE-114 WIRING	0-2
14	CV-113-4 WIRING	0-5
15	TE-102 WIRING	0-2

0-2	15	WL-100-4	WIRE, BUSS, SIZE 16
0-5	14	WL-100-6	WIRE, BUSS, SIZE 20
0-2	13	PX-104-2-053	SLEEVING, SIZE 16, YELLOW
0-2	12	PX-104-6-034	SLEEVING, SIZE 20, BLUE
0-2	11	PX-104-1-034	SLEEVING, SIZE 20, BLACK
X	10	BS-100	SOLDER, SOFT
1	9	TE-114-2	TERMINAL, FEED-THRU
2	8	SCBP0632BN6	SCREW, MACHINE
2	7	SCBP0632BN4	SCREW, MACHINE
2	6	NTH0632BN8	NUT, HEX
4	5	LWE06MRN	WASHER, LOCK, EXTERNAL
2	4	FW06HBN	WASHER, FLAT
1	3	MS-3348	SHIELD, WRAPAROUND, IFT TANK
1	2	MS-3344	SHIELD, TOP, IFT TANK
1	1	A-2707	IFT BOARD ASSEMBLY

REQ. ITEM	PART NO.	DESCRIPTION	SYMBOL
		THE TECHNICAL MATERIEL CORP. MAMARONECK. NEW YORK	
B	CLERICAL CHANGE	8.25.64 ± 1/8 @	
A	IT(12) WAS PX-104-2-034	7.29.64 11988 <i>RK</i> <i>JL</i> <i>TRW</i>	IFT SHIELD ASSEMBLY
SYM	DESCRIPTION	DATE	CH. NO. DRAFTS CHECKER ENG. APP.
UNLESS OTHERWISE SPECIFIED DIMENSIONS ARE IN INCHES AND INCLUDE CHEMICALLY APPLIED OR PLATED FINISHES		SCALE	
DECIMALS .X ± .05 .XX ± .01 .XXX ± .005		FRACTIONS ± 1/64 ANGLES ± 0° 30'	CODE A
TOLERANCES			
FINISH & SPEC. NO.		ELEC. DES. APP.	MECH. DES. APP.
		ETSA <i>J Medico</i>	<i>BP</i>
		TYPE & TEMPER	HEAT TREAT. SPEC.
		DRAWN	CHECKED
		<i>R KOHN</i>	<i>6/21</i>
		A-2708	
		B	

THE CONTENTS OF THIS DRAWING ARE THE EXCLUSIVE PROPERTY OF THE TECHNICAL MATERIEL CORP. ITS UNAUTHORIZED USE FOR REPRODUCTION IN WHOLE OR IN PART IS STRICTLY FORBIDDEN.

REQ. PER UNIT

USED ON

MODEL

ASS'Y. NO.

DATE

1

TTRA-2

A-2711

A-2710

A

ITEM NO.	SYMBOL(S)	ITEM NO.	USED TO MOUNT	QUAN.
1	C1201	4	PX-811 SHIELD	1
3	T1201	5	CV-113-2	1
		6	TZ-118	1
		7	PX-811 SHIELD	1
		8	CV-113-2	1
		9	TZ-118	1
		10	PX-811 SHIELD	1
		11	TZ-118	1
		12	PX-811 SHIELD	1
		13	CV-113-2	1

1	13	SCBP0632BN5	SCREW, MACHINE
1	12	SCBP0440BN5	SCREW, MACHINE
1	11	SC-143-0632B10	SCREW, MACHINE, NYLON
1	10	NTH0440BN6	NUT, HEX
1	9	NT-137-0632	NUT, HEX, NYLON
1	8	LWE06MRN	WASHER, LOCK, EXTERNAL
1	7	LWE04MRN	WASHER, LOCK, EXTERNAL
1	6	FW-101-1	WASHER, FLAT, NYLON
1	5	FW06HBN	WASHER, FLAT
1	4	FW04HBN	WASHER, FLAT
1	3	TZ-118	TRANSFORMER, RF, IFT
1	2	LD-1307/PX-811	BOARD, IFT
1	1	CV-113-2	CAPACITOR, VARIABLE, MICA

REQ.	ITEM	PART NO.	DESCRIPTION	SYMBOL
THE TECHNICAL MATERIEL CORP. MAMARONECK. NEW YORK				
STOCK SIZE				
BOARD ASSEMBLY, IFT				
MATERIAL				
UNLESS OTHERWISE SPECIFIED DIMENSIONS ARE IN INCHES AND INCLUDE CHEMICALLY APPLIED OR PLATED FINISHES			SCALE	
SYM		DESCRIPTION	DATE	CH. NO. DRAFTS CHECKER ENG. APP.
A		CLERICAL CHANGE	8.24.64	JB @
DECIMALS .X ± .05 .XX ± .01 .XXX ± .005		TOLERANCES	FRACTIONS ± 1/64 ANGLES ± 0° 30'	CODE A
TYPE & TEMPER		HEAT TREAT. SPEC.	DRAWN	CHECKED
			R KOHN	16 8/16/63
FINISH & SPEC. NO.		ELEC. DES. APP.	MECH. DES. APP.	FINAL APPROVAL
				A-2710 A

THE CONTENTS OF THIS DRAWING ARE THE EXCLUSIVE PROPERTY OF THE TECHNICAL MATERIEL CORP. ITS UNAUTHORIZED USE FOR REPRODUCTION IN WHOLE OR IN PART IS STRICTLY FORBIDDEN.

REQ. PER UNIT

USED ON

MODEL

ASS'Y. NO.

DATE

1

TTR-10

AX-410

A-2711

A

ITEM

ITEM NO.	USED TO MOUNT	QUAN.
2	SHIELDING	1
5	A-2710	2
6	A-2710	2
	MS-3344	2
7	A-2710	2
8	MS-3344	2
9	A-2710	2
10	WIRING	X
11	CV-113-2 WIRING	0-2
12	CV-113-2 WIRING	0-2
13	CV-113-2 WIRING	0-5

0-5	13	WL-100-6	WIRE, BUSS, SIZE 20
0-2	12	PX-104-6-034	SLEEVING, SIZE 20, BLUE
0-2	11	PX-104-1-034	SLEEVING, SIZE 20, BLACK
X	10	BS-100	SOLDER, SOFT
2	9	SCBP0632BN6	SCREW, MACHINE
2	8	SCBP0632BN4	SCREW, MACHINE
2	7	NTH0632BN8	NUT, HEX
4	6	LWE06MRN	WASHER, LOCK, EXTERNAL
2	5	FW06HBN	WASHER, FLAT
1	4	MS-3348	SHIELD, WRAPAROUND, IFT TANK
1	3	MS-3344	SHIELD, TOP, IFT TANK
1	2	HB-101-12N	PLUG, BUTTON
1	1	A-2710	IFT BOARD ASSEMBLY

REQ.	ITEM	PART NO.	DESCRIPTION	SYMBOL
THE TECHNICAL MATERIEL CORP. MAMARONECK. NEW YORK				
STOCK SIZE				
A	CLERICAL CHANGE	8.24.64	IFT SHIELD ASSEMBLY	
SYM	DESCRIPTION	DATE	CH. NO.	DRAFTS
UNLESS OTHERWISE SPECIFIED DIMENSIONS ARE IN INCHES AND INCLUDE CHEMICALLY APPLIED OR PLATED FINISHES		SCALE	CHECKER	ENG. APP.
DECIMALS .X ± .05 .XX ± .01 .XXX ± .005	TOLERANCES	FRACTIONS ± 1/64 ANGLES ± 0° 30'	CODE A	
TYPE & TEMPER		HEAT TREAT. SPEC.	DRAWN R KOHN	CHECKED 8/16/63
FINISH & SPEC. NO.		ELEC. DES. APP.	MECH. DES. APP.	FINAL APPROVAL A-2711 A

THE CONTENTS OF THIS DRAWING ARE THE EXCLUSIVE PROPERTY OF THE TECHNICAL MATERIEL CORP. ITS UNAUTHORIZED USE FOR REPRODUCTION IN WHOLE OR IN PART IS STRICTLY FORBIDDEN.	REQ. PER UNIT	USED ON			A-2712	C
	1	MODEL	ASS'Y. NO.	DATE		
		TTR-10	AX-410			

ITEM NO.	SYMBOL(S)	ITEM NO.	USED TO MOUNT	QUAN.	ITEM NO.	DESCRIPTION
1	CL202	8	JJ-286-6	2	30	SCBP0440BN3 SCREW, MACHINE
2	CL205	9	TZ-121	2	1 29	NP-575 PLATE, 1D
3	J1201	10			3-0 28	WL-100-4 WIRE, BUSS, SIZE 16
5	SI201	11	DELETED	1	0-6 27	PX-104-9-053 SLEEVING, SIZE 16, VIOLET
6	SI202	12	CB-168-1	1	0-4 26	PX-104-7-053 SLEEVING, SIZE 16, GREY
7	TI202		SW-330	1	0-3 25	PX-104-5-053 SLEEVING, SIZE 16, BROWN
			SW-331	1	0-5 24	PX-104-4-053 SLEEVING, SIZE 16, GREEN
		13	JJ-286-6	2	0-10 23	PX-104-3-053 SLEEVING, SIZE 16, RED
		14			0-3 22	PX-104-1-053 SLEEVING, SIZE 16, BLACK
		16	JJ-286-6	2	X 21	BS-100 SOLDER, SOFT
		17	TZ-121	2	2 20	TE-135-4 SPACER, THREADED
		18	TZ-121 CONTACT	5	2 19	TE-117-22 SPACER, SLEEVE
		19	SC-128	2	5 18	TE-110-3 TERMINAL, LUG
		20	TZ-121	2	2 17	SCBP0632BN5 SCREW, MACHINE
		21	WIRING	X	2 16	SCBP0440BN4 SCREW, MACHINE
		22	CV113 WIRING	0-3	2 15	SC-128-832-9 SCREW, KNURLED HEAD
		23	SW-330 WIRING	0-9	2 14	
		24	TZ-121 WIRING	0-1	2 13	NTH0440BN6 NUT, HEX
			SW-330 WIRING	0-2	3 12	LWL37MRN WASHER, LOCK, INTERNAL
			SW-331 WIRING	0-3	11	DELETED
		25	SW-331 WIRING	0-3	2 9	LWE06MRN WASHER, LOCK, EXTERNAL
		26	SW-330 WIRING	0-1	2 8	LWE04MRN WASHER, LOCK, EXTERNAL
			SW-331 WIRING	0-3	1 7	TZ-121 TRANSFORMER, PA TANK, 4-3MC
		27	SW-330 WIRING	0-3	1 6	SW-331 SWITCH, ROTARY, PA LOAD
			SW-331 WIRING	0-3	1 5	SW-330 SWITCH, ROTARY, PA TUNE
		28	WIRING	3-0	1 4	LD-1310/MS-3350 CHASSIS, WRAPAROUND
		30	NP-575	2	1 3	JJ-286-6 CONNECTOR, RECEPTACLE, MALE
					1 2	CV-113-7 CAPACITOR, VARIABLE, MICA
					1 1	CB-168-1 CAPACITOR, VARIABLE, AIR,

REQ.	ITEM	PART NO.	DESCRIPTION	SYMBOL
C	B/M: IT.11(SC131-0632BN3) DELE; USED TO MOUNT; IT.11(CV113) DELE.	2.4.65 13085	J.L. JCB	
B	IT.12 WAS LWI37 LRN	12.30.64 13025	hwb J.P.	
A	IT.10 LWE08MRN DELETED IT.14 NTH0832 BN8 DELETED	8.10.64 12003	hwb J.P.	
SYM	DESCRIPTION	DATE	CH. NO.	DRAFTS
UNLESS OTHERWISE SPECIFIED DIMENSIONS ARE IN INCHES AND INCLUDE CHEMICALLY APPLIED OR PLATED FINISHES		SCALE	CHECKER	ENG. APP.
DECIMALS .X ± .05 .XX ± .01 .XXX ± .005		FRACTIONS ± 1/64 ANGLES ± 0° 30'	CODE A	
TOLERANCES		TYPE & TEMPER	HEAT TREAT. SPEC.	FINISH & SPEC. NO.
		DRAWN	CHECKED	ELEC. DES. APP.
		R KOHN	hwb 8/14/63	MECH. DES. APP.
		ETSA J. Medico		
		FINAL APPROVAL		
		A-2712		C

THE CONTENTS OF THIS DRAWING ARE THE EXCLUSIVE PROPERTY OF THE TECHNICAL MATERIEL CORP. ITS UNAUTHORIZED USE FOR REPRODUCTION IN WHOLE OR IN PART IS STRICTLY FORBIDDEN.

REQ. PER UNIT

USED ON

MODEL

ASS'Y. NO.

DATE

1

TTRA-4

A-2714

A-2713

A

ITEM NO.	SYMBOL(S)	ITEM NO.	USED TO MOUNT	QUAN.
1	C1401	4	PX-811 SHIELD	1
3	T1401	5	CV-113-1	1
		6	TZ-119	1
		7	PX-811 SHIELD	1
		8	CV-113-1	1
		9	TZ-119	1
		10	PX-811 SHIELD	1
		11	TZ-119	1
		12	PX-811 SHIELD	1
		13	CV-113-1	1

1	13	SCBP0632BN5	SCREW, MACHINE
1	12	SCBP0440BN5	SCREW, MACHINE
1	11	SC-143-0632B10	SCREW, MACHINE, NYLON
1	10	NTH0440BN6	NUT, HEX
1	9	NT-137-0632	NUT, HEX, NYLON
1	8	LWE06MRN	WASHER, LOCK, EXTERNAL
1	7	LWE04MRN	WASHER, LOCK, EXTERNAL
1	6	FW-101-1	WASHER, FLAT, NYLON
1	5	FW06HBN	WASHER, FLAT
1	4	FW04HBN	WASHER, FLAT
1	3	TZ-119	TRANSFORMER, RF, IFT
1	2	LD-1309/PX-811	BOARD, IFT
1	1	CV-113-1	CAPACITOR, VARIABLE, MICA, IPA TUNE

REQ.	ITEM	PART NO.	DESCRIPTION	SYMBOL
			THE TECHNICAL MATERIEL CORP. MAMARONECK. NEW YORK	
STOCK SIZE			BOARD ASSEMBLY, IFT	
MATERIAL				
			ETSA	J. Medico 6/2/63
TYPE & TEMPER HEAT TREAT. SPEC.			DRAWN	CHECKED
			R KOHN	6/16/63
FINISH & SPEC. NO.			ELEC. DES. APP.	MECH. DES. APP.
			A-2713	A

SYM	DESCRIPTION	DATE	CH. NO.	DRAFTS	CHECKER	ENG. APP.
A	CLERICAL CHANGE	8.24.64		LB	Q	

UNLESS OTHERWISE SPECIFIED DIMENSIONS ARE IN INCHES AND INCLUDE CHEMICALLY APPLIED OR PLATED FINISHES		SCALE

DECIMALS	FRACTIONS	CODE
.X ± .05	± 1/64	A
.XX ± .01	ANGLES ± 0° 30'	
.XXX ± .005		

THE CONTENTS OF THIS DRAWING ARE THE EXCLUSIVE PROPERTY OF THE TECHNICAL MATERIEL CORP. ITS UNAUTHORIZED USE FOR REPRODUCTION IN WHOLE OR IN PART IS STRICTLY FORBIDDEN.

REQ. PER UNIT

USED ON

MODEL

ASS'Y. NO.

DATE

1

TTR-10

AX-412

A-2714

A

ITEM

NO.	USED TO MOUNT	QUAN.
2	SHIELDING	1
5	A-2713	2
6	A-2713	2
	MS-3344	2
7	A-2713	2
8	MS-3344	2
9	A-2713	2
10	WIRING	X
11	CV-113 WIRING	0-2
12	CV-113 WIRING	0-2
13	CV-113 WIRING	0-5

0-5	13	WL-100-6	WIRE, BUSS, SIZE 20
0-2	12	PX-104-6-034	SLEEVING, SIZE 20 BLUE
0-2	11	PX-104-1-034	SLEEVING, SIZE 20 BLACK
X	10	BS-100	SOLDER, SOFT
2	9	SCBP0632BN6	SCREW, MACHINE
2	8	SCBP0632BN4	SCREW, MACHINE
2	7	NTH0632BN8	NUT, HEX
4	6	LWEO6MRN	WASHER, LOCK, EXTERNAL
2	5	FWO6HBN	WASHER, FLAT
1	4	MS-3348	SHIELD, WRAPAROUND, IFT TANK
1	3	MS-3344	SHIELD, TOP, IFT TANK
1	2	HB-101-12N	PLUG, BUTTON
1	1	A-2713	IFT BOARD ASSEMBLY

SYM	DESCRIPTION	DATE	CH. NO.	DRAFTS	CHECKER	ENG. APP.	REQ. ITEM	PART NO.	DESCRIPTION	SYMBOL
A	CLERICAL CHANGE	8.24.64		WB	@				THE TECHNICAL MATERIEL CORP. MAMARONECK. NEW YORK	
									IFT SHIELD ASSEMBLY	
									MATERIAL	
									UNLESS OTHERWISE SPECIFIED DIMENSIONS ARE IN INCHES AND INCLUDE CHEMICALLY APPLIED OR PLATED FINISHES	
									SCALE	
									TYPE & TEMPER HEAT TREAT. SPEC.	
									DRAWN CHECKED FINAL APPROVAL	
									ELEC. DES. APP. MECH. DES. APP.	
									FINISH & SPEC. NO.	
									TOLERANCES	
									CODE	
									DECIMALS	
									FRACTIONS	
									ANGLES	
									A	
									A-2714	
									A	

THE CONTENTS OF THIS DRAWING ARE THE EXCLUSIVE PROPERTY OF THE TECHNICAL MATERIEL CORP. ITS UNAUTHORIZED USE FOR REPRODUCTION IN WHOLE OR IN PART IS STRICTLY FORBIDDEN.

REQ. PER UNIT

USED ON

MODEL

ASS'Y. NO.

DATE

1

TTR-10

AX-412

A-2715

B

ITEM

ITEM NO.	USED TO MOUNT	QUAN.	2	30	SCBP0440BN3	SCREW, MACHINE	
			1	29	NP-575	PLATE, ID	
8	JJ-286-6	2	2-6	28	WL-100-4	WIRE, BUSS, SIZE 16	
9	TZ-123	2	0-3	27	PX-104-7-053	SLEEVING, SIZE 16, GREY	
10			0-3	26	PX-104-6-053	SLEEVING, SIZE 16, BLUE	
11	CV113	1	0-3	25	PX-104-5-053	SLEEVING, SIZE 16, BROWN	
12	CB-168-2	1	0-4	24	PX-104-4-053	SLEEVING, SIZE 16, GREEN	
	SW-330	1	0-7	23	PX-104-3-053	SLEEVING, SIZE 16, RED	
	SW-331	1	0-8	22	PX-104-1-053	SLEEVING, SIZE 16, BLACK	
13	JJ-286-6	2	X	21	BS-100	SOLDER, SOFT	
14			2	20	TE-135-4	SPACER, THREADED	
16	JJ-286-6	2	2	19	TE-117-22	SPACER, SLEEVE	
17	TZ-123	2	5	18	TE-110-3	TERMINAL, LUG	
18	TZ-123 CONTACT	5	2	17	SCBP0632BN5	SCREW, MACHINE	
19	SC-128	2	2	16	SCBP0440BN4	SCREW, MACHINE	
20	TZ-123	2	2	15	SC-128-832-9	SCREW, KNURLED HEAD	
21	WIRING	X		14			
22	CM45 WIRING	0-5	2	13	NTH0440BN6	NUT, HEX	
	CV113	0-3	1	12	INT 37LRN	WASHER, LOCK, INTERNAL	
23	SW-330 WIRING	0-7	1	11	SC-131-0632BN3	SCREW, MACHINE	
24	TZ-123 WIRING	0-2		10			
	CM45 WIRING	0-2	2	9	LWE06MRN	WASHER, LOCK, EXTERNAL	
25	CM45 WIRING	0-3	2	8	LWE04MRN	WASHER, LOCK, EXTERNAL	
26	CB-168-2 WIRING	0-3	1	7	TZ-123	TRANSFORMER, PA TANK, 16-32 MC	T1402
27	TZ-123 WIRING	0-3	1	6	SW-331	SWITCH, ROTARY, PA LOAD	S1402
28	WIRING	2-6	1	5	SW-330	SWITCH, ROTARY, PA TUNE	S1401
30	NP-575	2	1	4	LD-1310/MS-3350	CHASSIS, WRAPAROUND	
			1	3	JJ-286-6	CONNECTOR, RECEPTACLE, MALE	J1401
			1	2	CV-113-6	CAPACITOR, VARIABLE, MICA	C1403
			1	1	CB-168-2	CAPACITOR, VARIABLE, AIR 10-210uuf	C1402

REQ.	ITEM	PART NO.	DESCRIPTION				SYMBOL
THE TECHNICAL MATERIEL CORP.							
MAMARONECK. NEW YORK							
STOCK SIZE							
CHASSIS ASSEMBLY, WRAPAROUND							
MATERIAL							
UNLESS OTHERWISE SPECIFIED DIMENSIONS ARE IN INCHES AND INCLUDE CHEMICALLY APPLIED OR PLATED FINISHES			SCALE				
DECIMALS .X ± .05 .XX ± .01 .XXX ± .005			FRACTIONS ± 1/64 ANGLES ± 0° 30'				
TOLERANCES			CODE				
A			A				
TYPE & TEMPER			HEAT TREAT. SPEC.				
FINISH & SPEC. NO.			ELEC. DES. APP.				
ETSA			J. Medico 6/2/63				
R KOHN			16 ⁸ /16/63				
DRAWN			CHECKED				
MECH. DES. APP.			FINAL APPROVAL				
A-2715			B				

THE CONTENTS OF THIS DRAWING ARE THE EXCLUSIVE PROPERTY OF THE TECHNICAL MATERIEL CORP. ITS UNAUTHORIZED USE FOR REPRODUCTION IN WHOLE OR IN PART IS STRICTLY FORBIDDEN.

REQ. PER UNIT

USED ON

MODEL

ASS'Y. NO.

DATE

1

TTR-10

AX-412

A-2716

A

ITEM NO.	SYMBOL(S)	ITEM NO.	USED TO MOUNT	QUAN.
2	C1404, 1405, C1406	3	CM45	2
		4	CM45	2
		5	CM45	2
		6	CM45	2

2	6	SCBP0632BN20	SCREW, MACHINE
2	5	NTH0632BN8	NUT, HEX
2	4	LWE06MRN	WASHER, LOCK, EXTERNAL
2	3	FW06HBN	WASHER, FLAT
3	2	CM45B221K	CAPACITOR, FLXED, MICA
2	1	MS-3345	BRACKET, CAPACITOR MOUNTING

REQ.	ITEM	PART NO.	DESCRIPTION	SYMBOL
THE TECHNICAL MATERIEL CORP.				
MAMARONECK. NEW YORK				
BRACKET ASSEMBLY, CAPACITOR				
STOCK SIZE				
MATERIAL				
UNLESS OTHERWISE SPECIFIED DIMENSIONS ARE IN INCHES AND INCLUDE CHEMICALLY APPLIED OR PLATED FINISHES		SCALE	E.T.S.A. J. Medico 6/2/63	
DECIMALS .X ± .05 .XX ± .01 .XXX ± .005		TOLERANCES	DRAWN R KOHN	
FRACTIONS ± 1/64 ANGLES ± 0° 30'		CODE A	CHECKED 16 ⁸ /16/63	
			FINAL APPROVAL A-2716	
			ELEC. DES. APP. MECH. DES. APP.	
			A	

ITEM NO.	USED TO MOUNT	QUANTITY
2	A-3153, A3647	4,2
3	MS-1795	1
4	A-3153, A3647	4,2
	MS-1795	1
5	A-3153, A3647	4,2
	MS-1795	1

REQ. PER UNIT	USED ON			A-2719	B
	M DEL	ASS'Y. NO.	DATE		
1	TPSA-1	A-2718	1-23-64		

TPSE-1
TPSF-1

1	8	A-3647	HV RECT. BOARD ASSEMBLY
1	7	A-3153-6	PC BOARD, ASSY, FINAL
1	6	A-2721	PLATE ASSEMBLY
7	5	SCBP0632BN4	SCREW, MACHINE
7	4	LWE06MRN	WASHER, LOCK, EXT.
1	3	NTH0632BN8	NUT, HEX
6	2	FW06HBN	WASHER, FLAT
1	1	MS-1795	BRACKET, PLATE MOUNTING

REQ.	ITEM	PART NO.	DESCRIPTION	SYMBOL															
			THE TECHNICAL MATERIEL CORP. MAMARONECK. NEW YORK																
B			REGULATOR ASSEMBLY																
A																			
SYM	DESCRIPTION	DATE	CH. NO.	DRAFTS	CHECKER	ENG. APP.	MATERIAL												
UNLESS OTHERWISE SPECIFIED DIMENSIONS ARE IN INCHES AND INCLUDE CHEMICALLY APPLIED OR PLATED FINISHES		SCALE		TYPE & TEMPER		HEAT TREAT. SPEC.		DRAWN		CHECKED		FINAL APPROVAL							
DECIMALS .X ± .05 .XX ± .01 .XXX ± .005	TOLERANCES	FRACTIONS ± 1/64 ANGLES ± 0° 30'	CODE A	G. Jones J. Fawcett 7/9/63		W.A. Palmer MP		A-2719		B									
				FINISH & SPEC. NO.		ELEC. DES. APP.		MECH. DES. APP.											

ITEM NO.	USED TO MOUNT	QUAN.	ITEM NO.	SYMBOL(S)
4	TS-166-1	6	2	XQ900, 901, 902
5	TS-166-1	6	3	Q900, 901, 902
6	TS-166-1	6		
7	TS-166-1	6		
8	2N350A	6		

REQ. PER UNIT	USED ON			A-2721
	MODEL	ASS'Y. NO.	DATE	
1	TPSA-1	A-2719	1-23-64	

TPSE-1
TPSF-1

6	8	SCBP0632BN6	SCREW, MACHINE
6	7	SCBP0256BN8	SCREW, MACHINE
6	6	NTH0256BN6	NUT, HEX
6	5	LWE02MRN	WASHER, LOCK, EXT.
6	4	FW02HBN	WASHER, FLAT
3	3	2N350A	TRANSISTOR
3	2	TS-166-1	SOCKET, SEMICON DEVICE
1	1	LD-1329/MS3356	PLATE, MOUNTING

REQ.	ITEM	PART NO.	DESCRIPTION	SYMBOL					
<p align="center">THE TECHNICAL MATERIEL CORP. MAMARONECK, NEW YORK</p> <p align="center">PLATE ASSEMBLY</p>									
SYM	DESCRIPTION	DATE	CH. NO.	DRAFTS	CHECKER	ENG. APP.	MATERIAL		
UNLESS OTHERWISE SPECIFIED DIMENSIONS ARE IN INCHES AND INCLUDE CHEMICALLY APPLIED OR PLATED FINISHES		SCALE							
DECIMALS .X ± .05 .XX ± .01 .XXX ± .005		FRACTIONS ± 1/64 ANGLES ± 0° 30'		CODE					
TOLERANCES		A							
TYPE & TEMPER				HEAT TREAT. SPEC.		DRAWN		CHECKED	FINAL APPROVAL
FINISH & SPEC. NO.				ELEC. DES. APP.		MECH. DES. APP.		A-2721	

SYMBOL(S)	ITEM NO.	USED TO MOUNT	QTY	REQ. PER UNIT	USED ON			A2725	Ø
					MODEL	ASS'Y. NO.	DATE		
				1	MSR-9	A3290	9/29/64		

3	A2727	3
4	A2727	3
6	A2727	3
7	A2727	3
8	A2727	5
	MS2314	3
9	A2727	3

3	9	SCFP0632BN6	SCREW, MACHINE
8	8	SCBP0832BN6	SCREW, MACHINE
3	7	NTH0832BN10	NUT, PLAIN, HEX
3	6	NTH0632BN8	NUT, PLAIN, HEX
1	5	MS2314	COVER, POWER SUPPLY
3	4	LWE08MRN	WASHER, LOCK, EXTERNAL
3	3	LWE06MRN	WASHER, LOCK, EXTERNAL
1	2	A2727	PLATE ASSEMBLY, RIGHT SIDE
1	1	A2726	CHASSIS ASSEMBLY, POWER SUPPLY

REQ.	ITEM	PART NO.	POSE	DESCRIPTION	SYMBOL
				THE TECHNICAL MATERIEL CORP.	
				MAMARONECK, NEW YORK	
				POWER SUPPLY ASSEMBLY	
Ø				ORIGINAL RELEASE FOR PRODUCTION	
				10.7.64	Ø
					RE
SYM				DESCRIPTION	DATE
					CH. NO.
					DRAFTS
					CHECKER
					ENG. APP.
				UNLESS OTHERWISE SPECIFIED	SCALE
				DIMENSIONS ARE IN INCHES AND INCLUDE	
				CHEMICALLY APPLIED OR PLATED FINISHES	
				DECIMALS	FRACTIONS
				.X ± .05	± 1/64
				.XX ± .01	ANGLES
				.XXX ± .005	± 0° 30'
				TOLERANCES	CODE
				TYPE & TEMPER	HEAT TREAT. SPEC.
				DRAWN	CHECKED
				FINISH & SPEC. NO.	ELEC. DES. APP.
					MECH. DES. APP.
				1510-2-64	L. Gabriel
				ENG COORD	10-2
					RJC
					FINAL APPROVAL
					A2725
					Ø

SYMBOL(S)	ITEM NO.	USED TO MOUNT	QTY	REQ. PER UNIT	USED ON			A2727	Ø
					MODEL	ASS'Y. NO.	DATE		
				1	MSR-9	A2725	9/30/64		
XF1	1								
F1	2								
	4	MS3102	4						
J2	5								
	6	MS3102	4						
	7	MS3102	4						
				4	7	SCBP0440BN5	SCREW, MACHINE		
				4	6	NTH0440BN6	NUT, PLAIN, HEX		
				1	5	MS3102A16S5P	CONNECTOR, RECEPTACLE, MALE		
				4	4	LWE04MRN	WASHER, LOCK, EXTERNAL		
				1	3	LD446/MS1328	PLATE, SIDE, RIGHT		
				1	2	FU100-3	FUSE, CARTRIDGE, 3A		
				1	1	FH100-2	FUSEHOLDER		

REQ.	ITEM	PART NO.	DESCRIPTION	SYMBOL
			POSE	
			THE TECHNICAL MATERIEL CORP.	
			MAMARONECK, NEW YORK	
STOCK SIZE				
Ø	ORIGINAL RELEASE FOR PRODUCTION	10.7.64	Ø	RL
SYM	DESCRIPTION	DATE	CH. NO.	DRAFTS
			CHECKER	ENG. APP.
UNLESS OTHERWISE SPECIFIED DIMENSIONS ARE IN INCHES AND INCLUDE CHEMICALLY APPLIED OR PLATED FINISHES		SCALE		
TOLERANCES		FRACTIONS	CODE	
.X ± .05		± 1/64		
.XX ± .01		ANGLES		
.XXX ± .005		± 0° 30'		
TYPE & TEMPER		HEAT TREAT. SPEC.	DRAWN	CHECKED
FINISH & SPEC. NO.		ELEC. DES. APP.	MECH. DES. APP.	
			A2727	Ø

THE CONTENTS OF THIS DRAWING ARE THE EXCLUSIVE PROPERTY OF THE TECHNICAL MATERIEL CORP. ITS UNAUTHORIZED USE FOR REPRODUCTION IN WHOLE OR IN PART IS STRICTLY FORBIDDEN.

REQ. PER UNIT	USED ON		
	MODEL	ASS'Y. NO.	DATE
1	TRX-1	A-2665	

A-2736

ITEM NO. USED TO MOUNT QUAN.
 3 A-2671 & A-2667 3

3 3 SCFP0632BN5 SCREW, MACHINE
 1 2 A-2671 PLATE ASSY, L SIDE
 1 1 A-2667 CHAS ASSY, MAIN

REQ.	ITEM	PART NO.	DESCRIPTION				SYMBOL
			THE TECHNICAL MATERIEL CORP. MAMARONECK. NEW YORK				
			MN CHAS & FRAME ASSY				
SYM	DESCRIPTION	DATE	CH. NO.	DRAFTS	CHECKER	ENG. APP.	MATERIAL
UNLESS OTHERWISE SPECIFIED DIMENSIONS ARE IN INCHES AND INCLUDE CHEMICALLY APPLIED OR PLATED FINISHES		SCALE					
DECIMALS .X ± .05 .XX ± .01 .XXX ± .005	TOLERANCES	FRACTIONS ± 1/64 ANGLES ± 0° 30'	CODE A				
			FINISH & SPEC. NO.		ELE. DES. APP.	MECH. DES. APP.	A-2736

wmy J.SAB. 1/9/64 *RJC*
 DRAWN CHECKED FINAL APPROVAL
16

THE CONTENTS OF THIS DRAWING ARE THE EXCLUSIVE PROPERTY OF THE TECHNICAL MATERIEL CORP. ITS UNAUTHORIZED USE FOR REPRODUCTION IN WHOLE OR IN PART IS STRICTLY FORBIDDEN.

REQ. PER UNIT	USED ON		A-2737
	MODEL	ASS'Y. NO.	
1	TRX-1	A-2665	

ITEM NO.	USED TO MOUNT	QUAN.
3	A-2669 & A-2670	3
5	MS-2936	8
	A-2669 & A-2670	3

11	5	SCFP0632BN5	SCREW, MACHINE
1	4	MS-2936	COV, PL, R SIDE
3	3	SCBP0632BN5	SCREW, MACHINE
1	2	A-2670	PL ASSY, RIGHT SIDE
1	1	A-2669	CHAS ASSY, POWER SUPPLY

SYM	DESCRIPTION	DATE	CH. NO.	DRAFTS	CHECKER	ENG. APP.	REQ. ITEM	PART NO.	DESCRIPTION	SYMBOL		
									THE TECHNICAL MATERIEL CORP. MAMARONECK, NEW YORK PWR SUP & SIDE PLATE ASSY			
								STOCK SIZE				
								MATERIAL				
UNLESS OTHERWISE SPECIFIED DIMENSIONS ARE IN INCHES AND INCLUDE CHEMICALLY APPLIED OR PLATED FINISHES		SCALE							J. SAB. 1-8-64	RAC		
DECIMALS .X ± .05 .XX ± .01 .XXX ± .005		FRACTIONS ± 1/64 ANGLES ± 0° 30'		TOLERANCES			CODE A	TYPE & TEMPER	HEAT TREAT. SPEC.	DRAWN	CHECKED	FINAL APPROVAL
							FINISH & SPEC. NO.		ELEC. DES. APP.	MECH. DES. APP.	A-2737	

SYMBOL(S)	ITEM NO.	USED TO MOUNT	QTY	REQ. PER UNIT	USED ON			A2739	C
					MODEL	ASS'Y. NO.	DATE		
				1	TTRR-1		9/15/64		
	3	NP562	2						
	4	FOR C118	1						
	8	MS3377	6						
	9	NP562	2						
	10	A2741	2						
		A2741&NP559	2						
	11	C118 to A2741	2						
	13	MS4401 TO MS3377	2						

2	13	SC131-0440BN5	SCR MACH-UNPCT.
1	12	MS4401	BRKT, RET.
2	11	SCFP0440BN4	SCREW, MACHINE
4	10	SCBP0440BN4	SCREW, MACHINE
2	9	SCBP0440BN3	SCREW, MACHINE
6	8	SC131-0440BN3	SCREW MACHINE, UNDERCUT
1	7	NP562	PLATE, ID-COMMERCIAL
1	6	NP559	PLATE, ID-FREQ
2	5	MS3377	PLATE, SIDE
1	4	MP123-1UB	KNOB
2	3	LWE04MRN	WASHER, LOCK, EXTERNAL
1	2	A2740	PC BOARD/CHASSIS ASSEMBLY
1	1	A2741	PANEL ASSEMBLY, FRONT

C	ITEMS 4 & 11, C118 WAS C12	9/18/65	14751	AVV.	JCB	MMK	REQ.	ITEM	PART NO.	AALT.	DESCRIPTION	SYMBOL	
B	IT. 12 & 13 ADD; IT 13 ADD. TO U/HM	3.23.65	13704	9L	JCB	MMK					THE TECHNICAL MATERIEL CORP. MAMARONECK. NEW YORK		
A	IT. 4 WAS MP127-1UB	10.21.64	12672	AB	JCB	MMK						FINAL ASSEMBLY	
Ø	ORIGINAL RELEASE FOR PRODUCTION	9.16.64	Ø	9L									
SYM	DESCRIPTION	DATE	CH. NO.	DRAFTS	CHECKER	ENG. APP.	MATERIAL						
UNLESS OTHERWISE SPECIFIED DIMENSIONS ARE IN INCHES AND INCLUDE CHEMICALLY APPLIED OR PLATED FINISHES			SCALE					15 9-16-64		L. Gabel 9-16		RAC	
DECIMALS .X ± .05 .XX ± .01 .XXX ± .005		FRACTIONS ± 1/64 ANGLES ± 0° 30'		CODE		TYPE & TEMPER		HEAT TREAT. SPEC.		DRAWN		CHECKED	FINAL APPROVAL
TOLERANCES										A2739		C	
										ELEC. DES. APP.		MECH. DES. APP.	

SYMBOL(S)	ITEM NO.	USED TO MOUNT	QTY	REQ. PER UNIT	USED ON			A2740	Ø
					MODEL	ASS'Y. NO.	DATE		
				1	TTRR-1	A2739	1/27/65		

8	CR110	1
8	CR110	1
8	CR110	1
8	CR110	1
9	ITEM 1	4
10	MS3446	2
11	MS3446	2

NOTE 1: ITEMS 2,3 & 8 SHALL BE USED ONLY WHEN XTAL OVENS ARE REQUIRED BY CUSTOMER. OVEN VOLTAGE (ITEM 8) IS OPTIONAL.

NOTE 2: ITEMS 4,5,7,10,11 SHALL BE USED ONLY WHEN NO XTAL OVENS ARE REQUIRED.

	2	11	LWE04MRN	WASH.,LK,EXT		
NOTE 2	—	2	10	SCBP0440BN12	SCR,MACH	
	4	9	SC131-0440BN3	SCR,MACH,UNDC		
NOTE 1	{	1	8	OC100-4	OVEN,XTAL-32VDC	Z101
		1	8	OC100-3	OVEN,XTAL-115VAC	Z101
		1	8	OC100-2	OVEN,XTAL-24VDC	Z101
	1	8	OC100-1	OVEN,XTAL-12VDC	Z101	
NOTE 2	—	1	7	MS3446	PLATE,XTAL RETAINING	
	1	6	LD1326/MS3379	CHAS,WRPARD		
NOTE 2	{	1	5	CR110-3-FREQ	XTAL UNIT,AMB	Y102
		1	4	CR110-3-FREQ	XTAL UNIT,AMB	Y101
NOTE 1	{	1	3	CR110-1-FREQ	XTAL UNIT,QTZ,OVEN	Y102
		1	2	CR110-1-FREQ	XTAL UNIT,QTZ,OVEN	Y101
	1	1	A3227-2	PC BD ASSY		

REQ.	ITEM	PART NO.	POSE	DESCRIPTION	SYMBOL			
			THE TECHNICAL MATERIEL CORP. MAMARONECK. NEW YORK					
			STOCK SIZE					
			PC BOARD/CHASSIS ASSEMBLY					
			MATERIAL					
			1-28-65	X. Gabil				
			ENG COORD	1-28-65				
			TYPE & TEMPER	HEAT TREAT. SPEC.	DRAWN	CHECKED	FINAL APPROVAL	
			FINISH & SPEC. NO.		ENG. DES. APP.	MECH. DES. APP.	A2740	Ø

SYMBOL(S)	ITEM NO.	USED TO MOUNT	QTY	REQ. PER UNIT	USED ON			A2741	A
					MODEL	ASS'Y. NO.	DATE		
				1	TTRR-1	A2739	9/9/64		
	3	MP126	1	1	TTRR-2	A2742			
	4	MP126	1	1	TTRR-3	A2744			
				1	TTRR-4	A2746			

1 4 SCBP0832BN5 SCREW, MACHINE-NYLON
1 3 LWI08MRN WASHER, LOCK, INTERNAL
1 2 MP126-1 KNOB, THREADED
1 1 LD1332/MS3381 PANEL, FRONT

REQ.	ITEM	PART NO.	DESCRIPTION				SYMBOL	
			A AL T ONE N					
STOCK SIZE			THE TECHNICAL MATERIEL CORP. MAMARONECK. NEW YORK					
A	IT. 4 WAS	SCI43-0832B8	1-27-65	13365	2L	ⓐ	ⓑ	
ⓐ	ORIGINAL RELEASE FOR PRODUCTION		9-10-64	ⓐ	2L			
SYM	DESCRIPTION	DATE	CH. NO.	DRAFTS	CHECKER	ENG. APP.		
UNLESS OTHERWISE SPECIFIED DIMENSIONS ARE IN INCHES AND INCLUDE CHEMICALLY APPLIED OR PLATED FINISHES			SCALE					
DECIMALS .X ± .05 .XX ± .01 .XXX ± .005			FRACTIONS ± 1/64 ANGLES ± 0° 30'					
TOLERANCES			CODE	MATERIAL				
TYPE & TEMPER			HEAT TREAT. SPEC.		ENG COORD	DRAWN	CHECKED	
FINISH & SPEC. NO.			ELEC. DES. APP.		MECH. DES. APP.		FINAL APPROVAL	
					9/10		A2741	
							A	

SYMBOL(S)	ITEM NO.	USED TO MOUNT	QTY	REQ. PER UNIT	USED ON			A2742	B
					MODEL	ASS'Y. NO.	DATE		
				1	TTRR-2		9/15/64		
	3	NP562	2						
	4	FOR C221	1						
	8	MS3377	6						
	9	NP562	2						
	10	A2741	2						
		A2741 & NP559	2						
	11	C221 to A2741	2						
	13	MS4401 TO MS3377	2						
				2	13	SC131-0440BN5	SCR, MACH, UNDC.T.		
				1	12	MS4401	BRKT, RET.		
				2	11	SCFP0440BN4	SCREW, MACHINE		
				4	10	SCBP0440BN4	SCREW, MACHINE		
				2	9	SCBP0440BN3	SCREW, MACHINE		
				6	8	SC131-0440BN3	SCREW, MACHINE UNDERCUT		
				1	7	NP562	PLATE, ID-COMMERCIAL		
				1	6	NP559	PLATE, ID-FREQ		
				2	5	MS3377	PLATE, SIDE		
				1	4	MP123-1UB	KNOB		
				2	3	LWE04MRN	WASHER, LOCK, EXTERNAL		
				1	2	A2743	PC BOARD/CHASSIS ASSEMBLY		
				1	1	A2741	PANEL ASSEMBLY, FRONT		

SYM	DESCRIPTION	DATE	CH. NO.	DRAFTS	CHECKER	ENG. APP.	REQ. ITEM	PART NO.	AALT.	DESCRIPTION	SYMBOL	
B	IT. 12 & 13 ADD; IT. 13 ADD. TO U/T/H	3-23-65	13704	21	JCT					THE TECHNICAL MATERIEL CORP. MAMARONECK, NEW YORK FINAL ASSEMBLY		
A	IT. 4 WAS MP127-1UB	10-21-64	12672	WB	QCS							
Ø	ORIGINAL RELEASE FOR PRODUCTION	9-16-64	Ø	44								
UNLESS OTHERWISE SPECIFIED DIMENSIONS ARE IN INCHES AND INCLUDE CHEMICALLY APPLIED OR PLATED FINISHES		SCALE					MATERIAL		10-9-16-64 ENG COORD	J. Gabriel 7-16	RIC	
DECIMALS .X ± .05 .XX ± .01 .XXX ± .005		FRACTIONS ± 1/64 ANGLES ± 0° 30'		TOLERANCES		CODE	TYPE & TEMPER	HEAT TREAT. SPEC.	DRAWN	CHECKED	FINAL APPROVAL	
							FINISH & SPEC. N .		JKA		A2742	B
									ELEC. DES. APP.	MECH. DES. APP.		

SYMBOL(S)	ITEM NO.	USED TO MOUNT	QTY	REQ. PER UNIT	USED ON			A2743	Ø
					MODEL	ASS'Y. NO.	DATE		
				1	TTRR-2	A2742	7/16/65		

8	CR110	1
8	CR110	1
8	CR110	1
8	CR110	1
9	ITEM 1	4
10	MS3446	2

NOTE 1: ITEMS 2,3 & 8 SHALL BE USED ONLY WHEN XTAL OVENS ARE REQUIRED BY CUSTOMER. OVEN VOLTAGE (ITEM 8) IS OPTIONAL.

NOTE 2: ITEMS 4,5,7, & 10 SHALL BE USED ONLY WHEN NO XTAL OVENS ARE REQUIRED.

NOTE 2	2	10	SCBP0440BN12	SCREW, MACHINE	
	4	9	SC131-0440BN3	SCREW, MACHINE, UNDERCUT	
	1	8	OC100-4	OVEN, XTAL-32 VDC	Z201
NOTE 1	1	8	OC100-3	OVEN, XTAL-115 VAC	Z201
	1	8	OC100-2	OVEN, XTAL-24 VDC	Z201
	1	8	OC100-1	OVEN, XTAL-12 VDC	Z201
NOTE 2	1	7	MS3446	PLATE, XTAL RETAINING	
	1	6	LD1326/MS3379	CHASSIS, WRAPAROUND	
NOTE 2	1	5	CR110-3-FREQ	XTAL UNIT, AMBIENT	Y202
	1	4	CR110-3-FREQ	XTAL UNIT, AMBIENT	Y201
NOTE 1	1	3	CR110-1-FREQ	XTAL UNIT, QUARTZ, OVEN	Y202
	1	2	CR110-1-FREQ	XTAL UNIT, QUARTZ, OVEN	Y201
	1	1	A3228-2	PC BOARD ASSEMBLY	

				REQ.	ITEM	PART NO.	POSE	DESCRIPTION	SYMBOL
								THE TECHNICAL MATERIEL CORP. MAMARONECK. NEW YORK	
						STOCK SIZE		PC BOARD/CHASSIS ASSEMBLY	
ORIGINAL RELEASE FOR PRODUCTION									
SYM	DESCRIPTION	DATE	CH. NO.	DRAFTS	CHECKER	ENG. APP.	MATERIAL		
UNLESS OTHERWISE SPECIFIED DIMENSIONS ARE IN INCHES AND INCLUDE CHEMICALLY APPLIED OR PLATED FINISHES		SCALE						ENG COORD	L. GABEL
								DRAWN	CHECKED
DECIMALS .X ± .05 .XX ± .01 .XXX ± .005		FRACTIONS ± 1/64 ANGLES ± 0° 30'		CODE				FINAL APPROVAL	
TOLERANCES								A2743	
						FINISH & SPEC. NO.		ELEC. DES. APP. MECH. DES. APP.	

SYMBOL(S)	ITEM NO.	USED TO MOUNT	QTY	REQ. PER UNIT	USED ON			A2744	B
					MODEL	ASS'Y. NO.	DATE		
	3	NP562	2	1	TTRR-3		9/16/64		
	4	FOR C321	1						
	8	MS3377	6						
	9	NP562	2						
	10	A2741	2						
		A2741 & NP559	2						
	11	C321 to A2741	2						
	13	MS4401 TO MS3377	2						

2	13	SC131-0440BN5	SCR, MACH, UNDC T.
1	12	MS4401	BRKT, NET.
2	11	SCFP0440BN4	SCREW, MACHINE
4	10	SCBP0440BN4	SCREW, MACHINE
2	9	SCBP0440BN3	SCREW, MACHINE
6	8	SC131-0440BN3	SCREW, MACHINE, UNDERCUT
1	7	NP562	PLATE, ID-COMMERCIAL
1	6	NP559	PLATE, ID-FREQUENCY
2	5	MS3377	PLATE, SIDE
1	4	MP123-1UB	KNOB
2	3	LWE04MRN	WASHER, LOCK, EXTERNAL
1	2	A2745	PC BOARD/CHASSIS ASSEMBLY
1	1	A2741	PANEL ASSEMBLY, FRONT

SYM	DESCRIPTION	DATE	CH. NO.	DRAFTS	CHECKER	ENG. APP.	REQ. ITEM	PART NO.	ALLT.	DESCRIPTION	SYMBOL	
B	IT. 12 & 13 ADD; IT. 13 ADD TO U/H	3.23.65	13704		J.F.	JOB				THE TECHNICAL MATERIEL CORP. MAMARONECK, NEW YORK		
A	IT. 4 WAS MP127-1UB	10.21.64	12672		LSB	JOB		STOCK SIZE				
Ø	ORIGINAL RELEASE FOR PRODUCTION	9.16.64	Ø		J.F.						FINAL ASSEMBLY	
										MATERIAL		
	UNLESS OTHERWISE SPECIFIED DIMENSIONS ARE IN INCHES AND INCLUDE CHEMICALLY APPLIED OR PLATED FINISHES	SCALE							16 9-16	ENG COORD	J. Gabel	
									9-16-64			
	DECIMALS .X ± .05 .XX ± .01 .XXX ± .005	TOLERANCES	FRACTIONS ± 1/64 ANGLES ± 0° 30'	CODE						DRAWN	CHECKED	FINAL APPROVAL
										JKA		A2744
										FINISH & SPEC. NO.	ELEC. DES. APP.	MECH. DES. APP.
												B

SYMBOL(S)	ITEM NO.	USED TO MOUNT	QTY	REQ. PER UNIT	USED ON			A2746	B
					MODEL	ASS'Y. NO.	DATE		
				1	TTRR-4		9/16/64		

3	NP562	2
4	FOR C421	1
8	MS3377	6
9	NP562	2
10	A2741	2
	A2741 & NP559	2
11	C421 to A2741	2
13	MS4401 TO MS3377	2

2	13	SC131-0440BN5	SCR, MACH, UNDC T.
1	12	MS4401	BRKT, RET.
2	11	SCFP0440BN4	SCREW, MACHINE
4	10	SCBP0440BN4	SCREW, MACHINE
2	9	SCBP0440BN3	SCREW, MACHINE
6	8	SC131-0440BN3	SCREW, MACHINE UNDERCUT
1	7	NP562	PLATE, ID-COMMERCIAL
1	6	NP559	PLATE, ID-FREQUENCY
2	5	MS3377	PLATE, SIDE
1	4	MP123-1UB	KNOB
2	3	LWE04MRN	WASHER, LOCK, EXTERNAL
1	2	A2747	PC BOARD/CHASSIS ASSEMBLY
1	1	A2741	PANEL ASSEMBLY, FRONT

SYM	DESCRIPTION	DATE	CH. NO.	DRAFTS	CHECKER	ENG. APP.	REQ. ITEM	PART NO.	DESCRIPTION	SYMBOL	
B	IT. 12 & 13 ADD; IT. 13 ADD. TO U/T/M	3.23.65	13704	8L	JCP	M			THE TECHNICAL MATERIEL CORP. MAMARONECK. NEW YORK FINAL ASSEMBLY		
A	IT. 4 WAS MP127-1UB	10.21.64	12672	5B	JOB	JKA		STOCK SIZE			
Ø	ORIGINAL RELEASE FOR PRODUCTION	9.16.64	Ø	8L				MATERIAL			
UNLESS OTHERWISE SPECIFIED DIMENSIONS ARE IN INCHES AND INCLUDE CHEMICALLY APPLIED OR PLATED FINISHES		SCALE					16 9-16		ENG COORD	L. Gabriel 9-16-64	RAC
DECIMALS .X ± .05 .XX ± .01 .XXX ± .005		FRACTIONS ± 1/64 ANGLES ± 0° 30'		CODE			TYPE & TEMPER HEAT TREAT. SPEC.		DRAWN	CHECKED	FINAL APPROVAL
TOLERANCES						FINISH & SPEC. NO.		ELEC. DES. APP.	MECH. DES. APP.	A2746	B

SYMBOL(S)	ITEM NO.	USED TO MOUNT	QTY
-----------	----------	---------------	-----

REQ. PER UNIT	USED ON			A2747	Ø
	MODEL	ASS'Y. NO.	DATE		
1	TTRR-4	A2746	9/24/64		

8	CR110	1
8	CR110	1
8	CR110	1
8	CR110	1
9	ITEM 1	4
10	MS3446	2

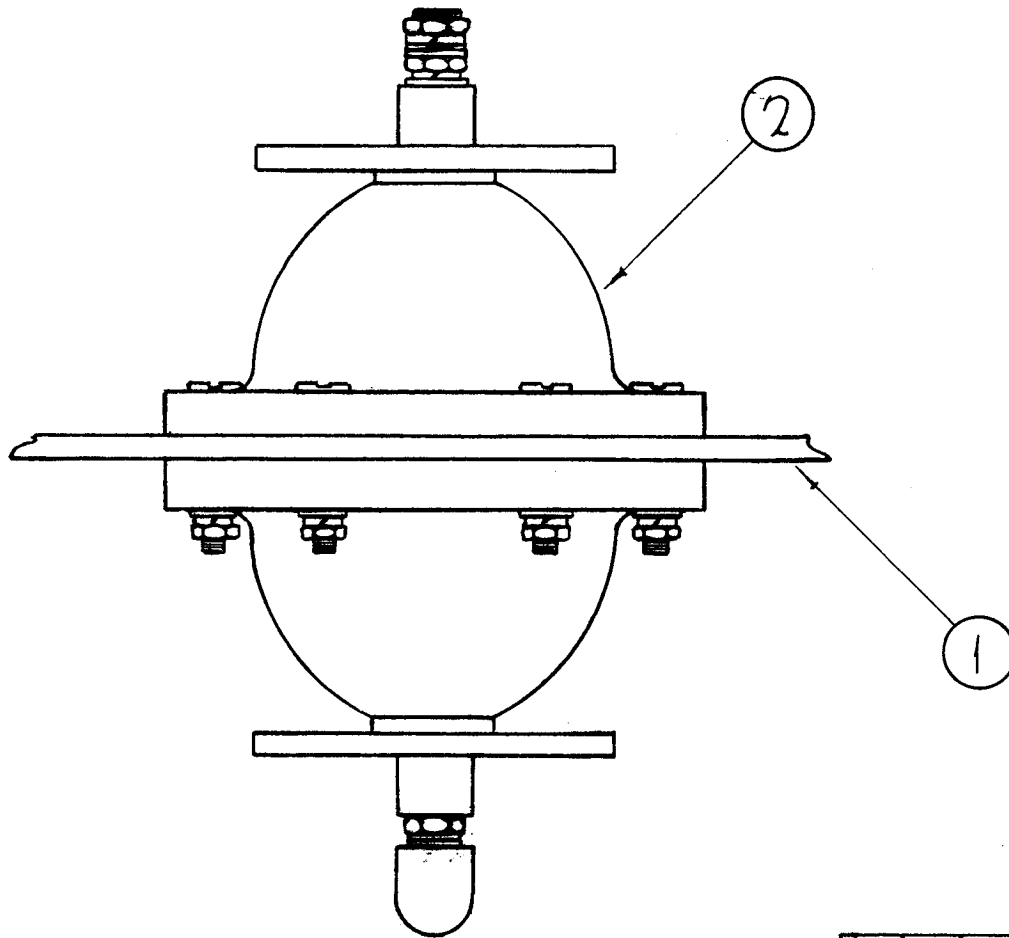
NOTE 1: ITEMS 2, 3 & 8 SHALL BE USED ONLY WHEN XTAL OVENS ARE REQUIRED BY CUSTOMER. OVEN VOLTAGE (ITEM 8) IS OPTIONAL.

NOTE 2: ITEMS 4, 5, 7 & 10 SHALL BE USED ONLY WHEN NO XTAL OVENS ARE REQUIRED.

NOTE 2	2	10	SCBP0440BN12	SCREW, MACHINE		
	4	9	SC131-0440BN3	SCREW, MACHINE, UNDERCUT		
NOTE 1	{	1	8	OC100-4	OVEN, XTAL-32 VDC	Z401
		1	8	OC100-3	OVEN, XTAL-115 VAC	Z401
		1	8	OC100-2	OVEN, XTAL-24 VDC	Z401
		1	8	OC100-1	OVEN, XTAL-12 VDC	Z401
NOTE 2	1	7	MS3446	PLATE, XTAL RETAINING		
	1	6	LD1326/MS3379	CHASSIS, WRAPAROUND		
NOTE 2	{	1	5	CR110-3-FREQ	XTAL UNIT, AMBIENT	Y402
		1	4	CR110-3-FREQ	XTAL UNIT, AMBIENT	Y401
NOTE 1	{	1	3	CR110-1-FREQ	XTAL UNIT, QUARTZ, OVEN	Y402
		1	2	CR110-1-FREQ	XTAL UNIT, QUARTZ, OVEN	Y401
		1	1	A3230-2	PC BOARD ASSEMBLY	

REQ.	ITEM	PART NO.	AALT.	DESCRIPTION	SYMBOL
			THE TECHNICAL MATERIEL CORP. MAMARONECK, NEW YORK		
STOCK SIZE					
			PC BOARD/CHASSIS ASSEMBLY		
MATERIAL					
UNLESS OTHERWISE SPECIFIED DIMENSIONS ARE IN INCHES AND INCLUDE CHEMICALLY APPLIED OR PLATED FINISHES		SCALE	169-25-64 2.8dml RAE ENG COORD 7-25		
DECIMALS .X ± .05 .XX ± .01 .XXX ± .005		TOLERANCES	TYPE & TEMPER		HEAT TREAT. SPEC.
FRACTIONS ± 1/64 ANGLES ± 0° 30'		CODE	DRAWN		CHECKED
			FINISH & SPEC. NO.		ELEC. DES. APP.
					MECH. DES. APP.
					A2747
					Ø

REQ. PER UNIT	USED ON			A-2763	O
	MODEL	ASS'Y. NO.	DATE		
1	GPT-200K	AT-105	12-6-63		



2	2	AX-450	INSULATOR BOWL ASS'Y		
1	1	LD-1264/PX-755	BOARD, MTG., ANT. FEED-THRU		
REQ.	ITEM	PART NO.	F. BUDETTI	DESCRIPTION	SYMBOL
STOCK SIZE			THE TECHNICAL MATERIEL CORP. MAMARONECK, NEW YORK		
MATERIAL			AX-450 ASS'Y BOARD AND BOWL		
TYPE & TEMPER			HEAT TREAT. SPEC.	DRAWN	CHECKED
FINISH & SPEC. NO.			ELEC. DES. APP.	MECH. DES. APP.	FINAL APPROVAL
UNLESS OTHERWISE SPECIFIED DIMENSIONS ARE IN INCHES AND INCLUDE CHEMICALLY APPLIED OR PLATED FINISHES			SCALE	John C Biele	
DECIMALS X ± .05 .XX ± .01 .XXX ± .005			FRACTIONS ± 1/64 ANGLES ± 0° 30'	CODE A	AA
TOLERANCES			OAB		
			ME 3/1/64		
			A-2763		
			O		

O	ORIGINAL RELEASE FOR PRODUCTION	5-13-64	O	A.M.		
X	CAP NUT PUT ON BOTTOM	12-27-63				
SYM	DESCRIPTION	DATE	CH. NO.	DRAFTS	CHECKER	ENG. APP.

SYMBOL(S)	ITEM NO.	USED TO MOUNT	QTY		REQ. PER UNIT	USED ON			A2773	A																								
					MODEL	ASS'Y. NO.	DATE																											
					1	TTR-10/ AX418	AX418	10/26/64																										
C1508,1520	1																																	
C1531																																		
S1508	3																																	
S1507	4																																	
	5	TE114	2																															
<table style="margin-left: auto;"> <tr> <td>4</td> <td>6</td> <td>TE114-2</td> <td>TERMINAL, FEEDTHRU, INSULATED</td> </tr> <tr> <td>2</td> <td>5</td> <td>TE110-6</td> <td>TERMINAL, LUG, NO. 1/4</td> </tr> <tr> <td>1</td> <td>4</td> <td>SW338</td> <td>SWITCH, ROTARY-RCVR CHAN</td> </tr> <tr> <td>1</td> <td>3</td> <td>SW337</td> <td>SWITCH, ROTARY-XMTR CHAN</td> </tr> <tr> <td>1</td> <td>2</td> <td>LD1334/MS3369</td> <td>PLATE, MOUNTING, SWITCH</td> </tr> <tr> <td>3</td> <td>1</td> <td>CK70AW202M</td> <td>CAPACITOR, FIXED, CERAMIC - FEEDTHRU</td> </tr> </table>											4	6	TE114-2	TERMINAL, FEEDTHRU, INSULATED	2	5	TE110-6	TERMINAL, LUG, NO. 1/4	1	4	SW338	SWITCH, ROTARY-RCVR CHAN	1	3	SW337	SWITCH, ROTARY-XMTR CHAN	1	2	LD1334/MS3369	PLATE, MOUNTING, SWITCH	3	1	CK70AW202M	CAPACITOR, FIXED, CERAMIC - FEEDTHRU
4	6	TE114-2	TERMINAL, FEEDTHRU, INSULATED																															
2	5	TE110-6	TERMINAL, LUG, NO. 1/4																															
1	4	SW338	SWITCH, ROTARY-RCVR CHAN																															
1	3	SW337	SWITCH, ROTARY-XMTR CHAN																															
1	2	LD1334/MS3369	PLATE, MOUNTING, SWITCH																															
3	1	CK70AW202M	CAPACITOR, FIXED, CERAMIC - FEEDTHRU																															
A	IT. 2 WAS MS3369	3-18-65	13673	22.	JCS	[Signature]																												
	ORIGINAL RELEASE FOR PRODUCTION	10-30-64																																
SYM	DESCRIPTION	DATE	CH. NO.	DRAFTS	CHECKER	ENG. APP.	MATERIAL																											
UNLESS OTHERWISE SPECIFIED DIMENSIONS ARE IN INCHES AND INCLUDE CHEMICALLY APPLIED OR PLATED FINISHES		SCALE		THE TECHNICAL MATERIEL CORP. MAMARONECK. NEW YORK																														
							STOCK SIZE																											
							PLATE ASSEMBLY, CHANNEL SWITCHES																											
								10-29-64		[Signature]																								
								ENG COORD		10-29-64																								
								DRAWN		CHECKED																								
								FINISH & SPEC. NO.		ELEC. DES. APP. MECH. DES. APP.																								
										A2773																								
										A																								

SYMBOL(S)	ITEM NO.	USED TO MOUNT	QTY	RE PER UNIT	USED ON			A2774	Ø
					MODEL	ASS'Y. NO.	DATE		
				1	TTR-10/	AX418	10/27/64		

AX418

5	A2775	4
	A2777	2
6	A2777	2
7	A2777, A2775	2, 4
8	GROUND WIRING	20

20	8	WL100-2	WIRE, ELECTRICAL, BUSS
6	7	SCBP0632BN5	SCREW, MACHINE
2	6	SC131-0632BN4	SCREW, MACHINE, UNDERCUT
6	5	LWE06MRN	WASHER, LOCK, EXTERNAL
	4	BS100	SOLDER, TIN ALLOY
1	3	A2777	PA SHIELD ASSEMBLY
2	2	A2776	PA CONTACT SHIELD ASSEMBLY
1	1	A2775	PA SHIELD ASSEMBLY, FRONT

								REQ. ITEM	PART NO.	AALT.	DESCRIPTION	SYMBOL	
											THE TECHNICAL MATERIEL CORP. MAMARONECK. NEW YORK		
									STOCK SIZE		PA SHIELD ASSEMBLY		
Ø	ORIGINAL RELEASE FOR PRODUCTION	10-30-64	Ø	J.F.									
SYM	DESCRIPTION	DATE	CH. NO.	DRAFTS	CHECKER	ENG. APP.			MATERIAL				
UNLESS OTHERWISE SPECIFIED DIMENSIONS ARE IN INCHES AND INCLUDE CHEMICALLY APPLIED OR PLATED FINISHES		SCALE								10-29-64 ENG COORD	I. Jabel 10-29-64	RJC	
TOLERANCES		FRACTIONS		CODE					TYPE & TEMPER	HEAT TREAT. SPEC.	DRAWN	CHECKED	FINAL APPROVAL
.X ± .05 .XX ± .01 .XXX ± .005		± 1/64 ANGLES ± 0° 30'											A2774
									FINISH & SPEC. NO.		ELÉC. DES. APP.	MECH. DES. APP.	Ø

SYMBOL(S)	ITEM NO.	USED TO MOUNT	QTY	REQ. PER UNIT	USED ON			A2775	Ø
					MODEL	ASS'Y. NO.	DATE		
				1	TTR-10/ AX418	A2774	10/27/64		

C1533	1		
	2	PX825	1
	3	SW262	1
	4	PX825	1
	5	CC109	1
		SW262	2
	7	PX825	1
	8	CC109	1
	9	SW262	2
CB1500	10		

1	10	SW262	CIRCUIT BREAKER, SPST
2	9	SCBP0632BN5	SCREW, MACHINE
1	8	SCBP0632BN4	SCREW, MACHINE
1	7	SCBP0440BN8	SCREW, MACHINE
1	6	PX825	HANDLE, EXTENSION, CIRCUIT BREAKER
3	5	LWE06MRN	WASHER, LOCK, EXTERNAL
1	4	LWE04MRN	WASHER, LOCK, EXTERNAL
1	3	LD1328/MS3385	SHIELD, FRONT
1	2	FW04HBN	WASHER, FLAT
1	1	CC109-38	CAPACITOR, FIXED, CERAMIC

REQ.	ITEM	PART NO.	ALT.	DESCRIPTION	SYMBOL
THE TECHNICAL MATERIEL CORP. MAMARONECK. NEW YORK					
STOCK SIZE					
PA SHIELD ASSEMBLY, FRONT					
Ø	ORIGINAL RELEASE FOR PRODUCTION	10.30.64	Ø	df.	
SYM	DESCRIPTION	DATE	CH. NO.	DRAFTS	CHECKER
UNLESS OTHERWISE SPECIFIED DIMENSIONS ARE IN INCHES AND INCLUDE CHEMICALLY APPLIED OR PLATED FINISHES		SCALE			
DECIMALS .X ± .05 .XX ± .01 .XXX ± .005		FRACTIONS ± 1/64 ANGLES ± 0° 30'		CODE	
TOLERANCES		TYPE & TEMPER		HEAT TREAT. SPEC.	
		DRAWN		CHECKED	
		FINISH & SPEC. NO.		ELEC. DES. APP.	
				MECH. DES. APP.	
				A2775	
				Ø	

SYMBOL(S)	ITEM NO.	USED TO MOUNT	QTY	REQ. PER UNIT	USED ON			A2776	Ø
					MODEL	ASS'Y. NO.	DATE		
				2	TTR-10	A2774	10/27/64		

AX418

2	A2778	6
3	A2778	6
	PM912	4
5	A2778	6
7	A2778	2
8	PM912	4
9	A2778	4

4	9	SCBP0440BN5	SCREW, MACHINE
4	8	SCBP0440BN4	SCREW, MACHINE
2	7	SC131-0440BN6	SCREW, MACHINE, UNDERCUT
1	6	PM912	GUIDE, MODULE, T
6	5	NTH0440BN8	NUT, PLAIN, HEX
1	4	MS3373	PLATE, SHIELD
10	3	LWE04MRN	WASHER, LOCK, EXTERNAL
6	2	FW04HBN	WASHER, FLAT
1	1	A2778	CONTACT BOARD ASSEMBLY

				REQ. ITEM	PART NO.	AALT. DESCRIPTION		SYMBOL	
				STOCK SIZE		THE TECHNICAL MATERIEL CORP. MAMARONECK. NEW YORK			
						PA CONTACT SHIELD ASSEMBLY			
Ø	ORIGINAL RELEASE FOR PRODUCTION	10.30.64	Ø	1.2					
SYM	DESCRIPTION	DATE	CH. NO.	DRAFTS	CHECKER	ENG. APP.			
UNLESS OTHERWISE SPECIFIED DIMENSIONS ARE IN INCHES AND INCLUDE CHEMICALLY APPLIED OR PLATED FINISHES		SCALE			MATERIAL				
DECIMALS .X ± .05 .XX ± .01 .XXX ± .005		FRACTIONS ± 1/64 ANGLES ± 0° 30'		CODE		TYPE & TEMPER		HEAT TREAT. SPEC.	FINISH & SPEC. NO.
TOLERANCES						DRAWN		CHECKED	FINAL APPROVAL
						10-29-64 ENG COORD I. Gabil 10-29-64		RAC	
						T.K.A.		A2776	
						ELEC. DES. APP.		MECH. DES. APP.	

SYMBOL(S)	ITEM NO.	USED TO MOUNT	QTY	REQ. PER UNIT	USED ON			A2777	Ø
					MODEL	ASS'Y. NO.	DATE		
				1	TTR-10	A2774	10/27/64		
					AX418				
	4	A3708	2						
		MS1795	2						
	6	MS1795	2						
	7	MS1795	2						
	8	A3708	2						
	9	UG625	1						
J1501	10								

1	10	UG625*/U	CONNECTOR, RECEPTACLE -BNC
1	9	TE111-2	TERMINAL, LUG, 3/8D
2	8	SCBP0632BN4	SCREW, MACHINE
2	7	SC131-0632BN4	SCREW, MACHINE, UNDERCUT
2	6	NTH0632BN8	NUT, PLAIN, HEX
2	5	MS1795	BRACKET, MOUNTING
4	4	LWE06MRN	WASHER, LOCK, EXTERNAL
1	3	LD1325/MS3386	SHIELD, REAR
	2	BS100	SOLDER, TIN ALLOY
1	1	A3708-4	TERMINAL BOARD, FINAL ASSEMBLY, METER CKT

REQ.	ITEM	PART NO.	DESCRIPTION			SYMBOL
			AALT.			
			THE TECHNICAL MATERIEL CORP.			
			MAMARONECK. NEW YORK			
STOCK SIZE			PA SHIELD ASSEMBLY, REAR			
MATERIAL						
UNLESS OTHERWISE SPECIFIED DIMENSIONS ARE IN INCHES AND INCLUDE CHEMICALLY APPLIED OR PLATED FINISHES			SCALE			
SYM	DESCRIPTION	DATE	CH. NO.	DRAFTS	CHECKER	ENG. APP.
Ø	ORIGINAL RELEASE FOR PRODUCTION	10-30-64	Ø	1	R.F.	
TYPE & TEMPER			HEAT TREAT. SPEC.	DRAWN	CHECKED	FINAL APPROVAL
DECIMALS .X ± .05 .XX ± .01 .XXX ± .005			FRACTIONS ± 1/64 ANGLES ± 0° 30'	CODE		
TOLERANCES					A2777	Ø
FINISH & SPEC. NO.			ELEC. DES. APP.	MECH. DES. APP.		

SYMBOL(S)	ITEM NO.	USED TO MOUNT	QTY	REQ. PER UNIT	USED ON			A2779	Ø
					MODEL	ASS'Y. NO.	DATE		
				1	TTR-10	AX418	10/27/64		
					AX418				
	3	A2781	10						
	4	A2781	10						
	5	A2781	10						

10	5	SCBP0632BN5	SCREW, MACHINE
10	4	NTH0632BN8	NUT, PLAIN, HEX
10	3	LWE06MRN	WASHER, LOCK, EXTERNAL
2	2	A2781	CHASSIS ASSEMBLY, MODULE
1	1	A2780	CHASSIS ASSEMBLY, WRAPAROUND

REQ.	ITEM	PART NO.	DESCRIPTION				SYMBOL
			AALT. THE TECHNICAL MATERIEL CORP. MAMARONECK. NEW YORK				
			WRAPAROUND & MODULE CHASSIS ASSEMBLY				
			MATERIAL				
			10-28-64	L. Gabriel	RDL		
			ENG COORD	10-28-64	FINAL APPROVAL		
			TYPE & TEMPER	HEAT TREAT. SPEC.	DRAWN	CHECKED	A2779
			FINISH & SPEC. NO.		ELEC. DES. APP.	MECH. DES. APP.	Ø

REQ. PER UNIT	USED ON			A2781	Ø
	MODEL	ASS'Y. NO.	DATE		
2	TTR-10	A2779	10/27/64		

AX418

SYMBOL(S)	ITEM NO.	USED TO MOUNT	QTY
-----------	----------	---------------	-----

1	PM910	12
	PM911	4
3	PM910	12
	PM911	4
6	PM910	12
	PM911	4

16	6	SC131-0440BN4	SCREW, MACHINE, UNDERCUT
2	5	PM911	GUIDE, DRAWER, L TYPE
3	4	PM910	GUIDE, DRAWER, T TYPE
16	3	NTH0440BN8	NUT, PLAIN, HEX
1	2	MS3375	CHASSIS, CONVERTER MODULE
16	1	LWE04MRN	WASHER, LOCK, EXTERNAL

Ø	ORIGINAL RELEASE FOR PRODUCTION	10-30-64	Ø	981					REQ. ITEM	PART NO.	AALT.	DESCRIPTION	SYMBOL
										THE TECHNICAL MATERIEL CORP. MAMARONECK. NEW YORK			
										CHASSIS ASSEMBLY, MODULE			
										MATERIAL			
										10-27-64 ENG COORD			
										10-27-64 ENG COORD			
										DRAWN			
										CHECKED			
										FINAL APPROVAL			
										A2781			
										Ø			
										FINISH & SPEC. NO.			
										ELEC. DES. APP. MECH. DES. APP.			

REQ. PER UNIT	USED ON			A2782	Ø
	MODEL	ASS'Y. NO.	DATE		
1	TTR-10/	AX418	10/27/64		

SYMBOL(S)	ITEM NO.	USED TO MOUNT	QTY
			AX418
	2	PM913	2
		PM914	4
	3	FS102	6
	5	FS102	6
	6	PM912	2
		PM914	4
	9	PM913	2
		PM914	4
	10	FS102	6

6	10	SCFP0348BN5	SCREW, MACHINE
6	9	SCBP0440BN4	SCREW, MACHINE
1	8	PM914	GUIDE, MODULE, T
1	7	PM913	GUIDE, MODULE, L
6	6	NTH0440BN8	NUT, PLAIN, HEX
6	5	NTH0348BN6	NUT, PLAIN, HEX
1	4	MS3388	PLATE, SIDE, LEFT
6	3	LWS03MRN	WASHER, LOCK, SPLIT
6	2	LWE04MRN	WASHER, LOCK, EXTERNAL
3	1	FS102-2	LOCKSPRING

REQ.	ITEM	PART NO.	AALT. DESCRIPTION				SYMBOL
			THE TECHNICAL MATERIEL CORP.				
			MAMARONECK. NEW YORK				
			STOCK SIZE				
Ø			PIA TE ASSEMBLY, LEFT SIDE				
SYM	DESCRIPTION	DATE	CH. NO.	DRAFTS	CHECKER	ENG. APP.	
	ORIGINAL RELEASE FOR PRODUCTION	10-30-64	Ø	12			
UNLESS OTHERWISE SPECIFIED DIMENSIONS ARE IN INCHES AND INCLUDE CHEMICALLY APPLIED OR PLATED FINISHES		SCALE					
DECIMALS .X ± .05 .XX ± .01 .XXX ± .005		FRACTIONS ± 1/64 ANGLES ± 0° 30'		CODE			
TOLERANCES				TYPE & TEMPER		HEAT TREAT. SPEC.	
				DRAWN		CHECKED	
				ELEC. DES. APP.		MECH. DES. APP.	
				FINISH & SPEC. NO.		A2782	
						Ø	

SYMBOL(S)	ITEM NO.	USED TO MOUNT	QTY	REQ. PER UNIT	USED ON			A2780	Ø	
					MODEL	ASS'Y. NO.	DATE			
				1	TTR-10	A2779	10/27/64			
AX418										
L1511,1512	4									
L1513										
C1522,1523	5									
C1524										
	6	BB101	4							
	7	CM113	3							
		MS1795	4							
	8	BB101	2							
	11	MS1795	4							
	12	CM113,CL240	4							
		WIRING								
	13	A3171-4	3							
		CM113	3							
	14	MS1795	4							
	4	14	SCBP0632BN5	4	14	SCBP0632BN5	SCREW, MACHINE			
	6	13	SC131-0632BN4	6	13	SC131-0632BN4	SCREW, MACHINE, UNDERCUT			
	4	12	PX104-8-022	4	12	PX104-8-022	INSULATION SLEEVING, SIZE 24-ORANGE			
	4	11	NTH0632BN8	4	11	NTH0632BN8	NUT, PLAIN, HEX			
	1	10	MS3387	1	10	MS3387	CHASSIS, WRAPAROUND			
	4	9	MS1795	4	9	MS1795	BRACKET, MOUNTING			
	2	8	LWI37LRN	2	8	LWI37LRN	WASHER, LOCK, INTERNAL			
	7	7	LWE06MRN	7	7	LWE06MRN	WASHER, LOCK, EXTERNAL			
	4	6	FW37HBN	4	6	FW37HBN	WASHER, FLAT			
	3	5	CM113QE102J	3	5	CM113QE102J	CAPACITOR, FIXED, MICA			
	3	4	CL240-120	3	4	CL240-120	COIL, RF, FIXED			
		3	BS100		3	BS100	SOLDER, TIN ALLOY			
	2	2	BB101	2	2	BB101	BUSHING, MACHINE THREAD			
	1	1	A3171-4	1	1	A3171-4	TERMINAL BOARD, FINAL ASSEMBLY, METER CKT			
				REQ.	ITEM	PART NO.	AALT. DESCRIPTION		SYMBOL	
							THE TECHNICAL MATERIEL CORP. MAMARONECK. NEW YORK			
						STOCK SIZE	CHASSIS ASSEMBLY, WRAPAROUND			
Ø	ORIGINAL RELEASE FOR PRODUCTION		10.30.64	Ø	J.E.					
SYM	DESCRIPTION		DATE	CH. NO.	DRAFTS	CHECKER	ENG. APP.	MATERIAL		
UNLESS OTHERWISE SPECIFIED DIMENSIONS ARE IN INCHES AND INCLUDE CHEMICALLY APPLIED OR PLATED FINISHES			SCALE							
DECIMALS	TOLERANCES		FRACTIONS		CODE					
.X ± .05			± 1/64							
.XX ± .01			ANGLES							
.XXX ± .005			± 0° 30'							
					TYPE & TEMPER		HEAT TREAT. SPEC.	DRAWN	CHECKED	FINAL APPROVAL
								10-27-64 ENG COORD	J. Gabel 10-27-64	RAL
										A2780
					FINISH & SPEC. NO.		ELEC. DES. APP.	MECH. DES. APP.		Ø

	REQ. PER UNIT	USED ON			A2784	Ø
		MODEL	ASSY. NO.	DATE		
		1	TTR-10	AX418		

SYMBOL(S)	ITEM NO.	USED TO MOUNT	QTY	AX418		
	3	A3189	5			
		A3190	4			
	4	A3189	5			
		A3190	4			
		MS3416	2			
		TE0632 CENTER	1			
	7	MS3416	2			
	8	A3189 CENTER	1			
		MS3416	2			
		TE0632 CENTER	1			
	9	A3189	4			
		A3190	4			
	10	A3190	4			
	11	A3189	5			
	5	11	TE0632BN69H	POST, ELECTRICAL-MECHANICAL		
	4	10	TE198-1	POST, EM-ML-FEMALE		
	8	9	SCBP0632BN6	SCREW, MACHINE		
	4	8	SCBP0632BN4	SCREW, MACHINE		
	2	7	NTH0632BN8	NUT, PLAIN, HEX		
	1	6	MS3416	HINGE		
	1	5	MS3412	PLATE, MOUNTING, RECEIVER BOARDS		
	12	4	LWE06MRN	WASHER, LOCK, EXTERNAL		
	9	3	FW06HBN	WASHER, FLAT		
	1	2	A3190-4	PC BD ASSY, RCVR AF		
	1	1	A3189-4	PC BD ASSY, RCVR IF		

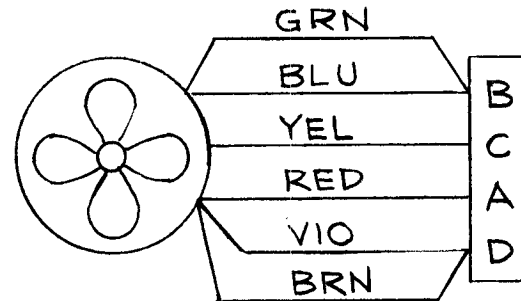
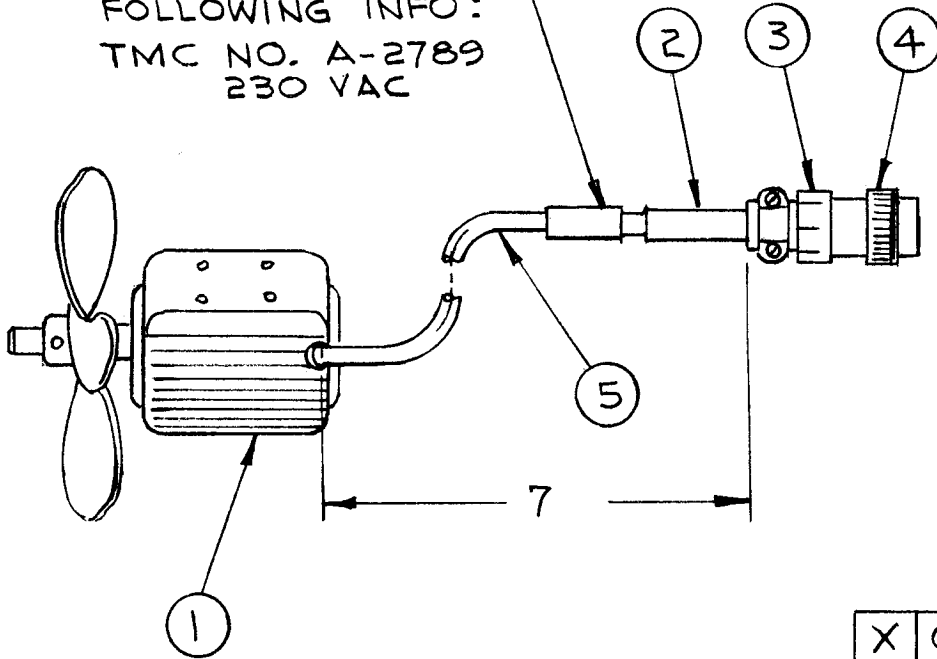
								REQ. ITEM	PART NO.	AALT.	DESCRIPTION	SYMBOL
										THE TECHNICAL MATERIEL CORP.		
										MAMARONECK, NEW YORK		
										RECEIVER AF/IF ASSEMBLY		
										MATERIAL		
										10-27-64 ENG COORD <i>L. Gabriel</i>		
										10-27-64 <i>RAL</i>		
										DRAWN		
										CHECKED		
										FINAL APPROVAL		
										A2784		
										Ø		
										ELEC. DES. APP. MECH. DES. APP.		
										FINISH & SPEC. NO.		

REQ. PER UNIT	USED ON			A2785	Ø
	MODEL	ASS'Y. NO.	DATE		
1	TTR-10 /	AX418	10/27/64		
AX418					
SYMBOL(S)	ITEM NO.	USED TO MOUNT	QTY		
	3	A3121	4		
		A3122	4		
	4	A3121	4		
		A3122	4		
	7	MS3416	2		
	8	MS3416	2		
	9	A3121	4		
		A3122	4		
	10	A3221	4		
	11	A3222	4		
	4	11	TE0632BN69H	POST, ELECTRICAL-MECHANICAL	
	4	10	TE198-1	POST, EM-ML-FEMALE	
	8	9	SCBP0632BN6	SCREW, MACHINE	
	2	8	SCBP0632BN4	SCREW, MACHINE	
	2	7	NTH0632BN8	NUT, PLAIN, HEX	
	1	6	MS3416	HINGE	
	1	5	MS3413	PLATE, MOUNTING, TRANSMITTER BOARDS	
	10	4	LWE06MRN	WASHER, LOCK, EXTERNAL	
	8	3	FW06HBN	WASHER, FLAT	
	1	2	A3222-5	PC BD ASSEMBLY-XMTR IF	
	1	1	A3221-5	PC BD ASSEMBLY-XMTR AF	

REQ.	ITEM	PART NO.	DESCRIPTION			SYMBOL
			AALT.			
STOCK SIZE			THE TECHNICAL MATERIEL CORP. MAMARONECK, NEW YORK			
			TRANSMITTER AF/IF ASSEMBLY			
MATERIAL						
UNLESS OTHERWISE SPECIFIED DIMENSIONS ARE IN INCHES AND INCLUDE CHEMICALLY APPLIED OR PLATED FINISHES			SCALE			
DECIMALS .X ± .05 .XX ± .01 .XXX ± .005			FRACTIONS ± 1/64 ANGLES ± 0° 30'			
TOLERANCES			CODE			
			TYPE & TEMPER			
			HEAT TREAT. SPEC.			
			DRAWN			
			CHECKED			
			FINAL APPROVAL			
			ELEC. DES. APP.			
			MECH. DES. APP.			
			A2785			
			Ø			

REQ. PER UNIT	USED ON			A 2789	B
	MODEL	ASS'Y. NO.	DATE		
1	GPT-40K(3)	AX-275	8-23-63		

LABEL TO CONTAIN FOLLOWING INFO:
TMC NO. A-2789
230 VAC



X	6	BS 100	SOLDER, SOFT		
0-9	5	PX 100-1-234	SLEEVING, SIZE 3	BLK	
1	4	MS3106A145-2P	CONNECTOR, PLUG	P7302	
1	3	MS3057-6A	CLAMP, CABLE		
1	2	MS3420-6A	BUSHING, CABLE		
1	1	BL 108	FAN, AXIAL	B7301	
	REQ. ITEM	PART NO.	BUDGET	DESCRIPTION	SYMBOL

B	IT. 3 WAS MS3057-6	3-1-67	17874	RME	<i>[Signature]</i>	<i>[Signature]</i>
A	ON BUILD UP MS3106A145-2P WAS MS3106B145-2P	10/2/63	10111	<i>[Signature]</i>	<i>[Signature]</i>	<i>[Signature]</i>
SYM	DESCRIPTION	DATE	CH. NO.	DRAFTS	CHECKER	ENG. APP.
UNLESS OTHERWISE SPECIFIED DIMENSIONS ARE IN INCHES AND INCLUDE CHEMICALLY APPLIED OR PLATED FINISHES		SCALE NONE				
DECIMALS .X ± .05 .XX ± .01 .XXX ± .005	TOLERANCES	FRACTIONS ± 1/64 ANGLES ± 0° 30'	CODE			

STOCK SIZE		THE TECHNICAL MATERIEL CORP. MAMARONECK, NEW YORK			
MATERIAL		FAN/CONNECTOR ASSY, AXIAL, 230V			
TYPE & TEMPER	HEAT TREAT. SPEC.	DRAWN	CHECKED	FINAL APPROVAL	
		<i>[Signature]</i>	<i>[Signature]</i> 10/2/63	<i>[Signature]</i> BP	
FINISH & SPEC. NO.		ELEC. DES. APP.	MECH. DES. APP.	A 2789	B

SYMBOL(S)	ITEM NO.	USED TO MOUNT	QTY	REQ. PER UNIT	USED ON			A2790	Ø
					MODEL	ASS'Y. NO.	DATE		
	3	A3152-4	4	1	AX436	AX436	9/16/64		
				4	3	SC131-0440BN3	SCREW, MACHINE, UNDERCUT		
				1	2	LD1360/MS3523	CHASSIS, WRAPAROUND		
				1	1	A3152-4	PC BOARD, FINAL ASSEMBLY		

SYM	DESCRIPTION	DATE	CH. NO.	DRAFTS	CHECKER	ENG. APP.	REQ.	ITEM	PART NO.	AALTONEN	DESCRIPTION	SYMBOL
Ø	ORIGINAL RELEASE FOR PRODUCTION	9.16.64	Ø	92						THE TECHNICAL MATERIEL CORP. MAMARONECK, NEW YORK		
										PC BOARD & CHASSIS ASSEMBLY		
										MATERIAL		
										16 9-16	L. Gabul 9-16	AC
										ENG COORD		
										TYPE & TEMPER	CHECKED	FINAL APPROVAL
										FINISH & SPEC. NO.	ELEC. DES. APP.	MECH. DES. APP.
												A2790
												Ø