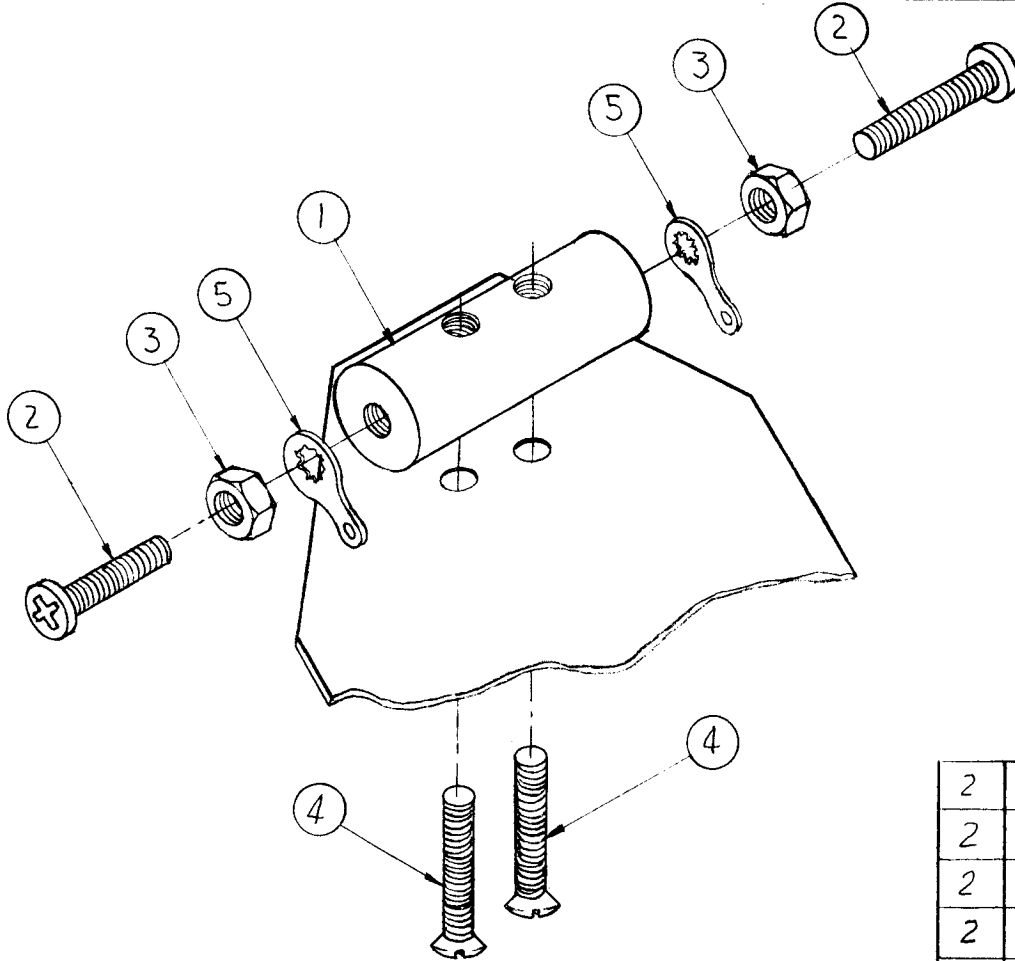


THE CONTENTS OF THIS DRAWING ARE THE EXCLUSIVE PROPERTY OF THE TECHNICAL MATERIEL CORP. ITS UNAUTHORIZED USE OR REPRODUCTION IN WHOLE OR IN PART IS STRICTLY FORBIDDEN.

REQ. PER UNIT	USED ON		
	MODEL	ASS'Y. NO.	DATE
1	DAC-15	A-2451	6-15-62
1	DAC-16	A-2455	6-15-62

A-2523



SETTING SPARK GAP

- 1- INSERT END SCREWS UNTIL THEY ARE IN CONTACT WITH MOUNTING SCREWS.
- 2- RETRACT END SCREWS 1 REVOLUTION & LOCK BY MEANS OF TWO END NUTS

TEST

THERE SHOULD BE NO DC CONNECTION BETWEEN END SCREWS & MTG. SCREWS AFTER BACKING.

2	5	TE-104-2	TERMINAL LOCKING	
2	4	SC131-0632BN8	SCREW UNDERCUT FLAT HEAD	
2	3	NTH0632BN10	NUT, HEX	
2	2	SCBP0632BN10	SCREW, MACHINE	
1	1	PX-246	HOLDER SPARK ROD	

Ø	ORIGINAL RELEASE	1/4/65	Ø				
X ₁	ITEMS 2, 3 & 4 PLATING WAS S.	1/4/66	JL				
SYM	DESCRIPTION	DATE	CH. NO.	DRAFTS	CHECKER	ENG. APP.	
UNLESS OTHERWISE SPECIFIED: DIMENSIONS ARE IN INCHES TOLERANCES ON FRAC. ± 1/64 DEC. ± .005 ANGLES ± 1/2°		SCALE: MAXIMUM ALLOWABLE TOLERANCES HAVE BEEN DETERMINED AND ANY DEVIATIONS WILL BE CAUSE FOR REJECTION. REMOVE ALL BURRS AND SHARP EDGES					

REQ.	ITEM	PART NO.	DESCRIPTION	SYMBOL
STOCK SIZE				
MATERIAL				
TYPE & TEMPER HEATTREAT. SPEC.				
FINISH & SPEC. NO.				
			DRAWN <i>Grant Lipp</i> CHECKED <i>[Signature]</i> ELEC. DES. APP. <i>[Signature]</i> MECH. DES. APP. <i>[Signature]</i>	FINAL APPROVAL <i>[Signature]</i> A-2523

THE CONTENTS OF THIS DRAWING ARE THE EXCLUSIVE PROPERTY OF THE TECHNICAL MATERIEL CORP. ITS UNAUTHORIZED USE OR REPRODUCTION IN WHOLE OR IN PART IS STRICTLY FORBIDDEN.

REQ. PER UNIT

1

USED ON

MODEL

HFR 1/T

ASS'Y. NO.

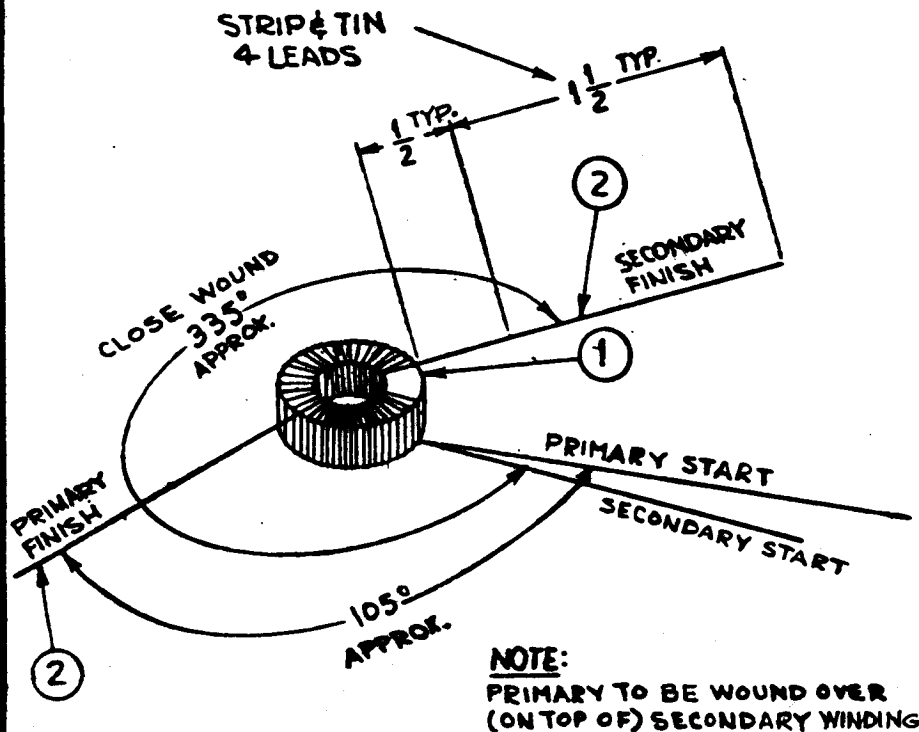
A-2371

DATE

8-22-62

A-2524

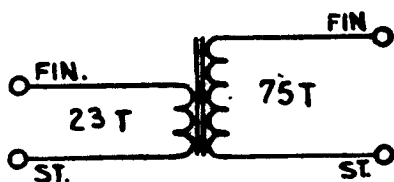
B



SCHEMATIC

T1001

PRIMARY



SECONDARY

— WINDING PROCEDURE —

1. WIND SECONDARY APPROX. 75 TURNS EQUALLY SPACED OVER THE ANGLE ϕ IN THE DIRECTION SHOWN.
 2. REMOVE OR ADD TURNS TO MEET INDUCTANCE.
 3. STAKE LEADS SECURELY WITH Q-MAX.
 4. WIND PRIMARY 23 TURNS EQUALLY SPACED OVER THE ANGLE ϕ IN THE DIRECTION SHOWN.
 5. STAKE LEADS SECURELY WITH Q-MAX.
 6. BAKE FOR 1/2 HR. AT 215° F TO REMOVE MOISTURE.
 7. COAT COIL & CORE WITH Q-MAX & BAKE 1/2 HR. AT 215° F.
- * NOTE: USE TMC COIL STANDARDS FOR TEST REFERENCE.

— ELECTRICAL SPECS —

SECONDARY $L = 23.7 \mu h \pm 0.35 \mu h$.

Q-.150 AT 2.5 MC.

C DISTRIB. 2.5 μmf (FOR REF. ONLY)

PRIMARY

$L = 4.3 \mu h$ (FOR REF. ONLY)

C. DISTRIB. = 7.4 μmf (FOR REF. ONLY)

REQ.	ITEM	PART NO.	DESCRIPTION	SYMBOL
X	3	GL102	Q-MAX	
X	2	WI-122-30	MAGNET WIRE, SINGLE # 30	
1	1	CI 127-1	CORE, TOROID	
<p>STOCK SIZE</p> <p>MATERIAL</p>				
			<p>THE TECHNICAL MATERIEL CORP. MAMARONECK, NEW YORK</p> <p>TZ-108 ASSEMBLY</p> <p>TRANSFORMER, ANTENNA BAND 1, FREQ. 2.3 MC</p>	
TYPE & TEMPER		HEATTREAT. SPEC.	DRAWN	CHECKED
FINISH & SPEC. NO.		ELEC. DES. APP.	MECH. DES. APP.	
			<p>FINAL APPROVAL</p> <p>A-2524 B</p>	

SYM	DESCRIPTION	DATE	CH. NO.	DRAFTS	CHECKER	ENG. APP.
B	NOTE ADDED	1-12-67	17575	RME	G.D.L.	
A	C.DISTRIB ADDED (PRIMARY)	11-12-62	7651			

UNLESS OTHERWISE SPECIFIED:

DIMENSIONS ARE IN INCHES
TOLERANCES ON

FRAC. $\pm 1/64$ DEC. $\pm .009$ ANGLES $\pm 1/2^\circ$

SCALE: DO NOT SCALE

MAXIMUM ALLOWABLE TOLERANCES HAVE BEEN DETERMINED AND ANY DEVIATIONS WILL BE CAUSE FOR REJECTION. REMOVE ALL BURRS AND SHARP EDGES

THE CONTENTS OF THIS DRAWING ARE THE EXCLUSIVE PROPERTY OF THE TECHNICAL MATERIEL CORP. ITS UNAUTHORIZED USE OR REPRODUCTION IN WHOLE OR IN PART IS STRICTLY FORBIDDEN.

REQ. PER UNIT

1

HFR 1/T

USED ON

M DEL

ASSY. NO.

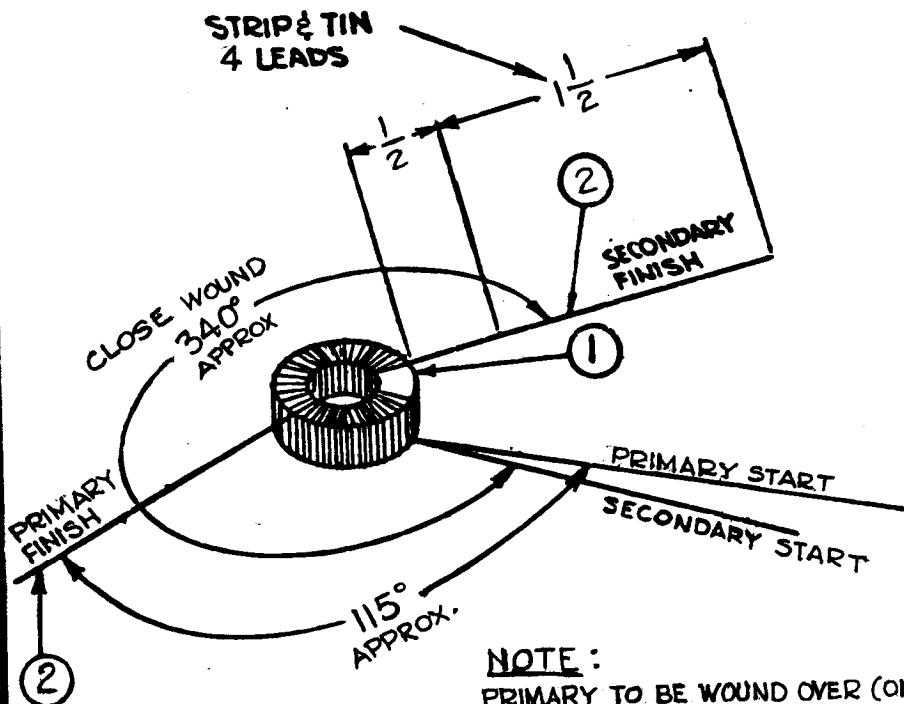
DATE

A-2372

8-22-62

A-2525

B

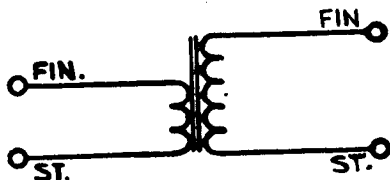


NOTE: PRIMARY TO BE WOUND OVER (ON TOP OF) SECONDARY WINDING.

SCHMATIC

T1003

PRIMARY



SECONDARY

— WINDING PROCEDURE —

1. WIND SECONDARY APPROX. 60 TURNS EQUALLY SPACED OVER THE ANGLE $\frac{1}{2}$ IN THE DIRECTION SHOWN.
 2. REMOVE OR ADD TURNS TO MEET INDUCTANCE.
 3. STAKE LEADS SECURELY WITH Q-MAX
 4. WIND PRIMARY 20 TURNS EQUALLY SPACED OVER THE ANGLE $\frac{1}{2}$ IN THE DIRECTION SHOWN.
 5. STAKE LEADS SECURELY WITH Q-MAX.
 6. BAKE FOR 1/2 HR. AT 215°F TO REMOVE MOISTURE.
 7. COAT COIL & CORE WITH Q-MAX & BAKE 1/2 HR. AT 215°F.
- * NOTE: USE TMC COIL STANDARDS FOR TEST REFERENCE.

— ELECTRICAL SPECS —

SECONDARY L = 14 μ h \pm 0.25 μ h.

Q = 160 AT 2.5 MC.

C.DISTRIB. 2.2 μ mf (FOR REF. ONLY)

L = 2.95 μ h (FOR REF. ONLY)

C.DISTRIB = 8.5 μ mf (FOR REF. ONLY)

PRIMARY

REQ.	ITEM	PART NO.	DESCRIPTION	SYMBOL
X	3	GL 102	Q-MAX	
X	2	WJ-122-20	MAGNET WIRE, SINGLE #20	
1	1	CI 127-1	CORE, TOROID	
THE TECHNICAL MATERIEL CORP. MAMARONECK, NEW YORK				
TZ-109 ASSEMBLY				
TRANSFORMER, ANTENNA BAND 2, FREQ. 3-4 MC.				
UNLESS OTHERWISE SPECIFIED: DIMENSIONS ARE IN INCHES TOLERANCES ON FRAC. \pm 1/64 DEC. \pm .005 ANGLES \pm 1/2°		SCALE: DO NOT SCALE MAXIMUM ALLOWABLE TOLERANCES HAVE BEEN DETERMINED AND ANY DEVIATIONS WILL BE CAUSE FOR REJECTION. REMOVE ALL BURRS AND SHARP EDGES		
TYPE & TEMPER		HEATTREAT. SPEC.	DRAWN	CHECKED
FINISH & SPEC. NO.			J. ANGER	BP
			ELEC. DES. APP.	MECH. DES. APP.
			A-2525	
			B	

THE CONTENTS OF THIS DRAWING ARE THE EXCLUSIVE PROPERTY OF THE TECHNICAL MATERIEL CORP. ITS UNAUTHORIZED USE OR REPR DUCTI N IN WH LE CR IN PART IS STRICTLY FORBIDDEN.

REQ. PER UNIT

1

USED ON

MODEL

ASSY. NO.

DATE

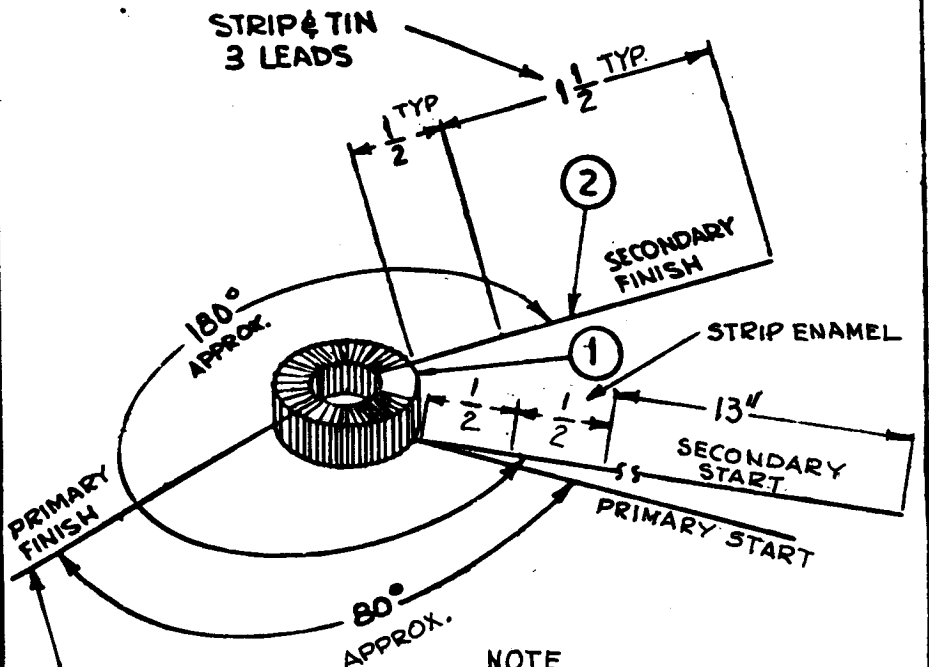
HFR 1/T

A-2374

8-22-62

A-2527

B

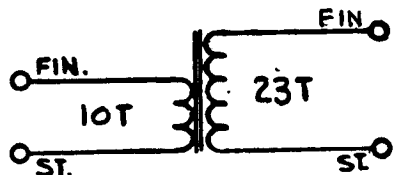


NOTE

PRIMARY TO BE WOUND OVER (ON TOP OF) SECONDARY WINDING.

SCHMATIC T1005

PRIMARY



SECONDARY

— WINDING PROCEDURE —

1. WIND SECONDARY APPROX. 23 TURNS EQUALLY SPACED OVER THE ANGLE ϕ IN THE DIRECTION SHOWN.
2. REMOVE OR ADD TURNS TO MEET INDUCTANCE.
3. STAKE LEADS SECURELY WITH Q-MAX
4. WIND PRIMARY 10 TURNS EQUALLY SPACED OVER THE ANGLE ϕ IN THE DIRECTION SHOWN.
5. STAKE LEADS SECURELY WITH Q-MAX.
6. BAKE FOR 1/2 HR. AT 215°F TO REMOVE MOISTURE.
7. COAT COIL & CORE WITH Q-MAX & BAKE 1/2 HR. AT 215°F

* NOTE: USE TMC COIL STANDARDS FOR TEST REFERENCE.

— ELECTRICAL SPECS —

SECONDARY $L = 2.68 \mu h \pm 0.1 \mu h.$

WITH COIL CLAMPED INTO Q-METER 1/2" AWAY FROM TERMINALS WITH START END OF COIL TO LOW SIDE

$Q = 160$ AT 7.9 MC.

C DISTRIB. 1.4 μmf (FOR REF. ONLY)

PRIMARY

$L = 0.96 \mu h$ (FOR REF. ONLY)

C DISTRIB = 2.9 μmf (FOR REF. ONLY)

REQ.	ITEM	PART NO.	DESCRIPTION	SYMBOL
X	3	GL 102	Q-MAX	
X	2	WI-122-24	MAGNET WIRE, SINGLE # 24	
I	1	CI 127-1	CORE, TOROID	
— W —			THE TECHNICAL MATERIEL CORP. MAMARONECK, NEW YORK	
— W —			TZ-III ASSEMBLY	
— W —			TRANSFORMER, ANTENNA BAND 4, FREQ. 6-8 MC	
TYPE & TEMPER.		HEAT TREAT. SPEC.	DRAWN	CHECKED
— W —			J. ANGER	
FINISH & SPEC. NO.		ELEC. DES. APP.	MECH. DES. APP.	

SYM	DESCRIPTION	DATE	CH. NO.	DRAFTS	CHECKER	ENG. APP.
B	NOTE ADDED	1-12-67	17575	RME	G.D.L	
A	C. DISTRIB. ADDED TO SEC & PRI.	1-12-62	7651	GR	J. ANGER	

UNLESS OTHERWISE SPECIFIED:
DIMENSIONS ARE IN INCHES
TOLERANCES ON
FRAC. $\pm 1/64$ DEC. $\pm .005$ ANGLES $\pm 1/2^\circ$

SCALE: DO NOT SCALE
MAXIMUM ALLOWABLE TOLERANCES HAVE BEEN DETERMINED AND ANY DEVIATIONS WILL BE CAUSE FOR REJECT! N. REMOVE ALL BURRS AND SHARP EDGES

A-2527

B

THE CONTENTS OF THIS DRAWING ARE THE EXCLUSIVE PROPERTY OF THE TECHNICAL MATERIAL CORP. ITS UNAUTHORIZED USE OR REPRODUCTION IN WHOLE OR IN PART IS STRICTLY FORBIDDEN.

REQ. PER UNIT

1 HFR 1/T

USED ON

MODEL

ASSY. N.

DATE

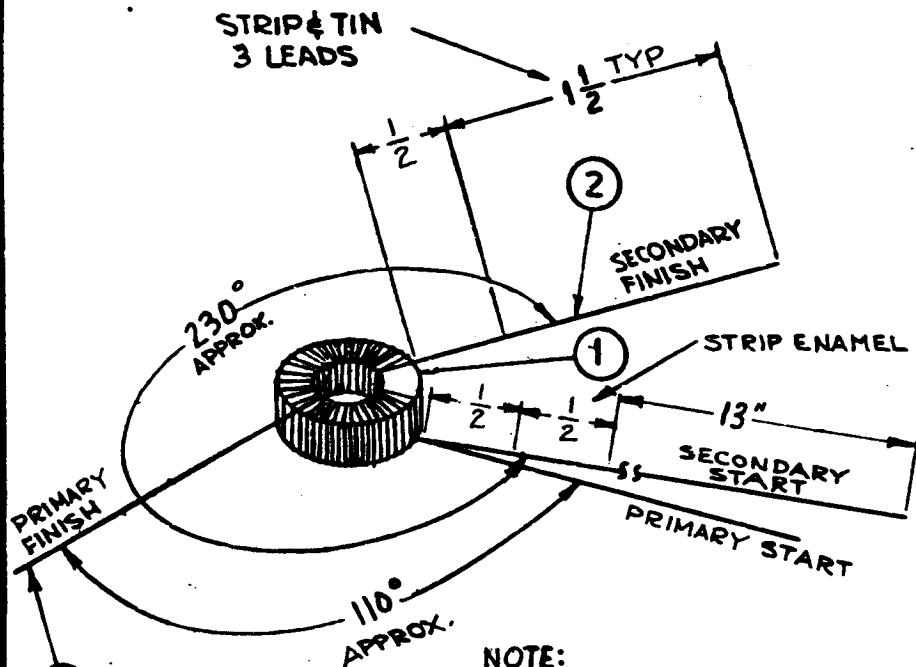
1 HFR 1/T

A-2575

8-22-62

A-2528

B

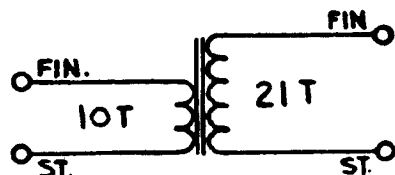


NOTE:
PRIMARY TO BE WOUND OVER (ON TOP OF) SECONDARY WINDING.

SCHEMATIC

T1006

PRIMARY



SECONDARY

— WINDING PROCEDURE —

1. WIND SECONDARY APPROX. 21 TURNS EQUALLY SPACED OVER THE ANGLE ϕ IN THE DIRECTION SHOWN.
2. REMOVE OR ADD TURNS TO MEET INDUCTANCE.
3. STAKE LEADS SECURELY WITH Q-MAX.
4. WIND PRIMARY 10 TURNS EQUALLY SPACED OVER THE ANGLE ϕ IN THE DIRECTION SHOWN.
5. STAKE LEADS SECURELY WITH Q-MAX.
6. BAKE FOR 1/2 HR. AT 215°F TO REMOVE MOISTURE.
7. COAT COIL & CORE WITH Q-MAX & BAKE 1/2 HR. AT 215°F.

* NOTE: USE TMC COIL STANDARDS FOR TEST REFERENCE.

— ELECTRICAL SPECS —

SECONDARY $L = 2.1 \mu h \pm 0.07 \mu h$.

WITH COIL CLAMPED INTO Q-METER 1/2" AWAY FROM TERMINALS, WITH START END OF COIL TO LOW SIDE

$Q = 165$ AT 7.9 MC.

C DISTRIB. $1.1 \mu \mu f$ (FOR REF. ONLY)

PRIMARY $L = 0.82 \mu h$ (FOR REF. ONLY)

C DISTRIB. $2.5 \mu \mu f$ (FOR REF. ONLY)

X	3	GL 102	Q-MAX
X	2	WI-122-24	MAGNET WIRE, SINGLE # 24
1	1	CI 127-1	CORE, TOROID

REQ.	ITEM	PART NO.	DESCRIPTION	SYMBOL
			THE TECHNICAL MATERIAL CORP. MAMARONECK, NEW YORK	
			TZ-112 ASSEMBLY	
			TRANSFORMER, ANTENNA BANDS, FREQ 8-12 MC	
			STOCK SIZE	
			MATERIAL	
			TYPE & TEMPER	
			HEAT TREAT. SPEC.	
			FINISH & SPEC. NO.	
			DRAWN	
			CHECKED	
			ELEC. DES. APP.	
			MECH. DES. APP.	

B	NOTE ADDED	1-12-67	17575	RME	GDL	
A	C. DISTRIB ADDED TO SEC & PRI	11-12-62	7651			
SYM	DESCRIPTION	DATE	CH. NO.	DRAFTS	CHECKER	ENG. APP.

UNLESS OTHERWISE SPECIFIED:
DIMENSIONS ARE IN INCHES
TOLERANCES ON
FRAC. $\pm 1/64$ DEC. $\pm .005$ ANGLES $\pm 1/2^\circ$

SCALE: DO NOT SCALE

MAXIMUM ALLOWABLE TOLERANCES HAVE BEEN DETERMINED AND ANY DEVIATIONS WILL BE CAUSE FOR REJECTION. REMOVE ALL BURRS AND SHARP EDGES

A-2528 B

THE CONTENTS OF THIS DRAWING ARE THE EXCLUSIVE PROPERTY OF THE TECHNICAL MATERIEL CORP. ITS UNAUTHORIZED USE OR REPRDUCTION IN WHOLE OR IN PART IS STRICTLY FORBIDDEN.

REQ. PER UNIT

1

USED ON

MODEL

HFR 1/T

ASSY. NO.

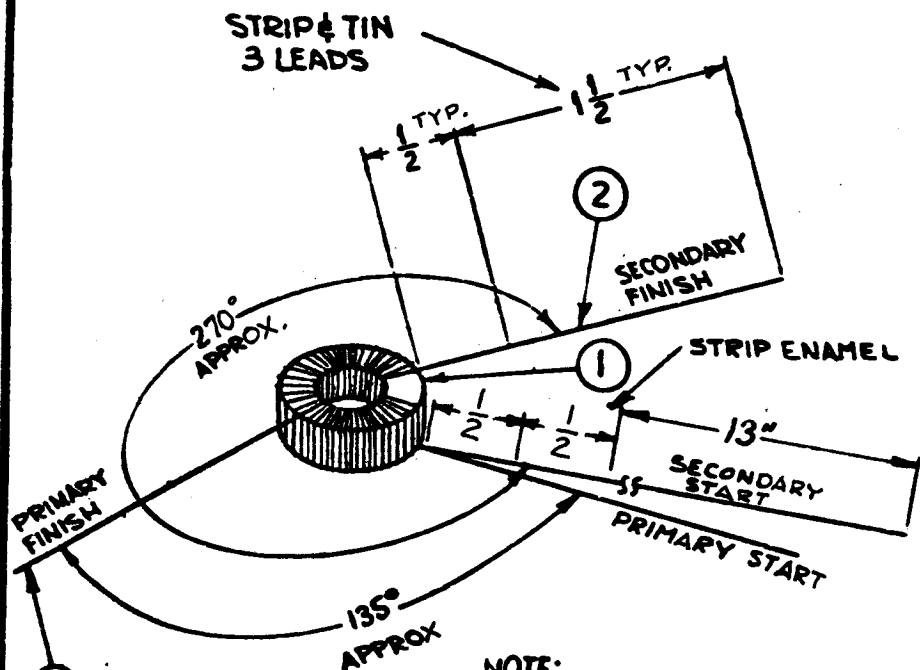
A-2376

DATE

8-22-62

A-2529

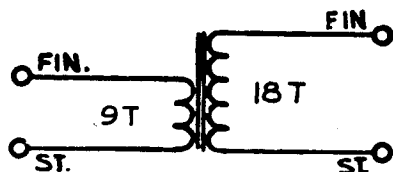
B



NOTE:
PRIMARY TO BE WOUND OVER (ON TOP OF) SECONDARY WINDING.

SCHMATIC
T1007

PRIMARY



SECONDARY

— WINDING PROCEDURE —

1. WIND SECONDARY APPROX. 18 TURNS EQUALLY SPACED OVER THE ANGLE ϕ IN THE DIRECTION SHOWN.
2. REMOVE OR ADD TURNS TO MEET INDUCTANCE.
3. STAKE LEADS SECURELY WITH Q-MAX
4. WIND PRIMARY 9 TURNS EQUALLY SPACED OVER THE ANGLE ϕ IN THE DIRECTION SHOWN.
5. STAKE LEADS SECURELY WITH Q-MAX.
6. BAKE FOR 1/2 HR. AT 215° F TO REMOVE MOISTURE.
7. COAT COIL & CORE WITH Q-MAX & BAKE 1/2 HR. AT 215° F.

* NOTE: USE TMC COIL STANDARDS FOR TEST REFERENCE.

— ELECTRICAL SPECS —

SECONDARY $L = 1.48 \mu h \pm 0.04 \mu h.$

WITH COIL CLAMPED INTO Q-METER 1/2" AWAY FROM TERMINALS, WITH START END OF COIL TO LOW SIDE.

$Q = 160$ AT 7.9 MC.

C DISTRIB. 0.6 $\mu m f$ (FOR REF. ONLY)

PRIMARY

$L = 0.63 \mu h$ (FOR REF. ONLY)

C DISTRIB = 2.4 $\mu m f.$ (FOR REF. ONLY)

X	3	GL 102	Q-MAX
X	2	WJ-122-24	MAGNET WIRE, SINGLE # 24
1	1	CI 127-1	CORE, TOROID
REQ. ITEM	PART NO.		DESCRIPTION
— w —			THE TECHNICAL MATERIEL CORP.
STOCK SIZE			MAMARONECK, NEW YORK
— w —			TZ-113 ASSEMBLY
MATERIAL			TRANSFORMER, ANTENNA BAND 6, FREQ. 12-16 MC.
— w —		— w —	G. Sancer
TYPE & TEMPER		HEAT TREAT. SPEC.	J. De
— w —		— w —	BP
FINISH & SPEC. N.		ELEC. DES. APP.	MECH. DES. APP.
		J. ANGER	A-2529
			B

UNLESS OTHERWISE SPECIFIED:
DIMENSIONS ARE IN INCHES
TOLERANCES ON
FRAC. $\pm 1/64$ DEC. $\pm .008$ ANGLES $\pm 1/2^\circ$

SCALE: DO NOT SCALE
MAXIMUM ALLOWABLE TOLERANCES HAVE BEEN DETERMINED AND ANY DEVIATIONS WILL BE CAUSE FOR REJECTION. REMOVE ALL BURRS AND SHARP EDGES

THE CONTENTS OF THIS DRAWING ARE THE EXCLUSIVE PROPERTY OF THE TECHNICAL MATERIEL CORP. ITS UNAUTHORIZED USE OR REPRODUCTION IN WHOLE OR IN PART IS STRICTLY FORBIDDEN.

REQ. PER UNIT

1

USED ON

M DEL

ASSY. N .

DATE

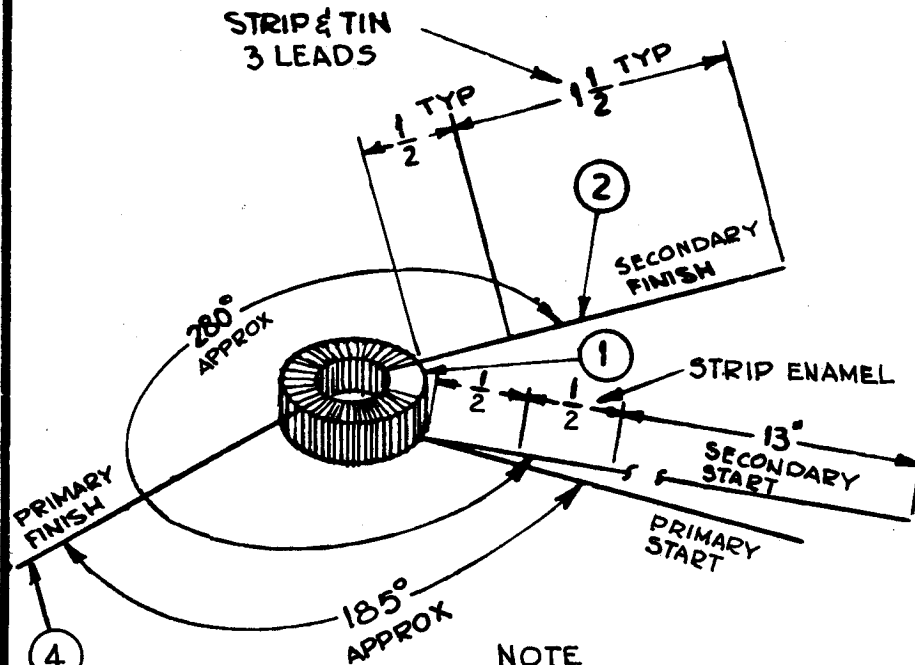
HFR 1/T

A-2377

8-23-62

A-2530

B



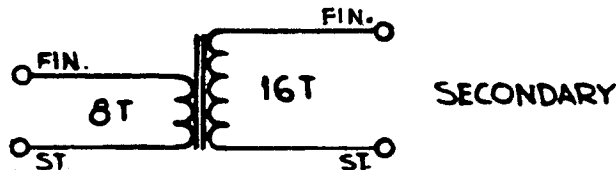
NOTE

PRIMARY & SECONDARY TO BE WOUND IN PARALLEL TO FORM A SINGLE LAYER

SCHMATIC

T1008

PRIMARY



— WINDING PROCEDURE —

1. WIND SECONDARY APPROX. 16 TURNS EQUALLY SPACED OVER THE ANGLE ϕ IN THE DIRECTION SHOWN.
 2. REMOVE OR ADD TURNS TO MEET INDUCTANCE.
 3. STAKE LEADS SECURELY WITH Q-MAY.
 4. WIND PRIMARY 8 TURNS EQUALLY SPACED OVER THE ANGLE ϕ IN THE DIRECTION SHOWN.
 5. STAKE LEADS SECURELY WITH Q-MAX.
 6. BAKE FOR 1/2 HR. AT 215° F TO REMOVE MOISTURE.
 7. COAT COIL & CORE WITH Q-MAX & BAKE 1/2 HR. AT 215° F.
- * NOTE: USE TMC COIL STANDARDS FOR TEST REFERENCE.

— ELECTRICAL SPECS —

SECONDARY L = 1.3 μ h \pm 0.03 μ h

WITH COIL CLAMPED INTO Q-METER 1/2" AWAY FROM TERMINALS, WITH START END OF COIL TO LOW SIDE

Q = 140 AT 25 MC.

C DISTRIB. 1.0 μ MF (FOR REF. ONLY)

PRIMARY

L = 0.55 μ h (FOR REF. ONLY)

C DISTRIB. 2.8 μ MF (FOR REF. ONLY)

X	4	WI-122-24	MAGNET WIRE, SINGLE #24
X	3	GL 102	Q-MAX
X	2	WI-122-22	MAGNET WIRE, SINGLE #22
1	1	CI 127-1	CORE, TOROID

REQ.	ITEM	PART NO.	DESCRIPTION	SYMBOL
THE TECHNICAL MATERIEL CORP. MAMARONECK, NEW YORK				
TZ-114 ASSEMBLY				
TRANSFORMER, ANTENNA BAND 7, FREQ. 16-24 MC				
MATERIAL				
TYPE & TEMPER HEATTREAT. SPEC. DRAWN CHECKED FINAL APPROVAL				
FINISH & SPEC. NO. ELEC. DES. APP. M.E.C.N. DES. APP.				

B	NOTE ADDED	1-12-67	17575	RME	G.D.L.	MA
A	C. DISTRIB ADDED TO SEC. & PRI.	11-12-62	7651	GR	J.H.	K.B.
SYM	DESCRIPTION	DATE	CHK. NO.	DRAFTS	CHECKED	ENG. APP.

UNLESS OTHERWISE SPECIFIED:
DIMENSIONS ARE IN INCHES
TOLERANCES ON
FRAC. \pm 1/64 DEC. \pm .005 ANGLES \pm 1/2°

SCALE: DO NOT SCALE

MAXIMUM ALLOWABLE TOLERANCES HAVE BEEN DETERMINED AND ANY DEVIATIONS WILL BE CAUSE FOR REJECTION. REMOVE ALL BURRS AND SHARP EDGES

THE CONTENTS OF THIS DRAWING ARE THE EXCLUSIVE PROPERTY OF THE TECHNICAL MATERIAL CORP. ITS UNAUTHORIZED USE OR REPRODUCTION IN WHOLE OR IN PART IS STRICTLY FORBIDDEN.

REQ. PER UNIT

1

USED ON

MODEL

HFR 1/T

ASSY. NO.

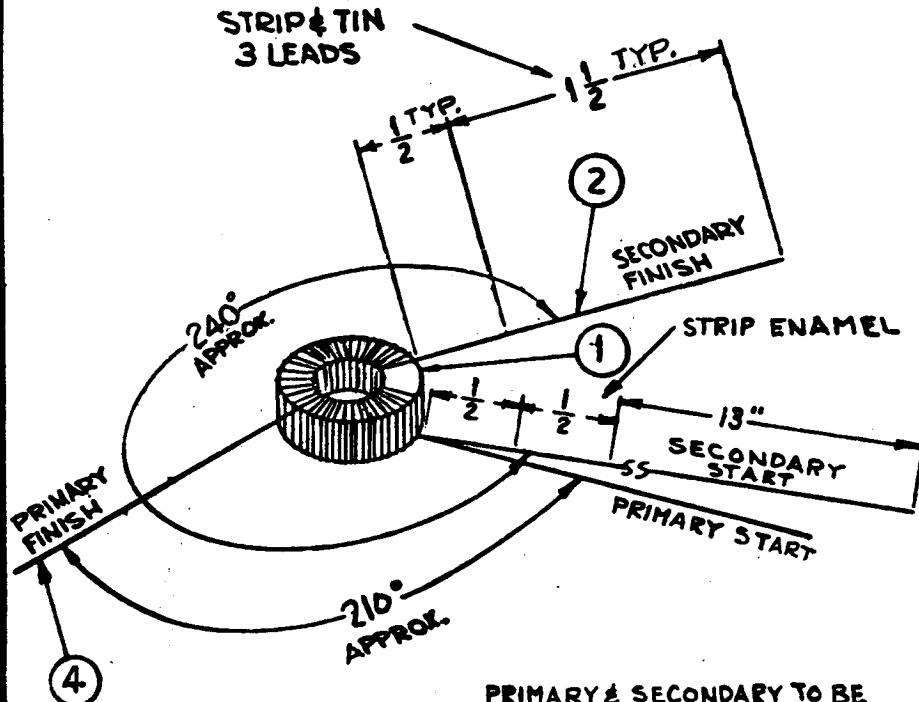
A-2378

DATE

8-22-62

A-2531

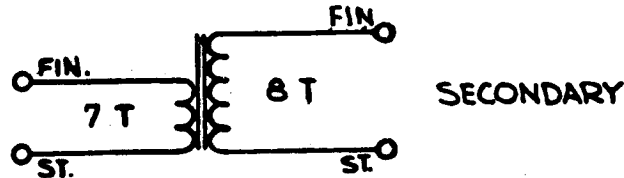
B



PRIMARY & SECONDARY TO BE WOUND IN PARALLEL TO FORM A SINGLE LAYER.

SCHEMATIC
T1009

PRIMARY



— WINDING PROCEDURE —

1. WIND SECONDARY APPROX. 8 TURNS EQUALLY SPACED OVER THE ANGLE ϕ IN THE DIRECTION SHOWN.
2. REMOVE OR ADD TURNS TO MEET INDUCTANCE.
3. STAKE LEADS SECURELY WITH Q-MAX.
4. WIND PRIMARY 7 TURNS EQUALLY SPACED OVER THE ANGLE ϕ IN THE DIRECTION SHOWN.
5. STAKE LEADS SECURELY WITH Q-MAX.
6. BAKE FOR 1/2 HR. AT 215° F TO REMOVE MOISTURE.
7. COAT COIL & CORE WITH Q-MAX & BAKE 1/2 HR. AT 215° F.

* NOTE: USE TMC COIL STANDARDS FOR TEST REFERENCE.

— ELECTRICAL SPECS —

SECONDARY $L = 0.398 \mu h \pm 0.012 \mu h$.
WITH COIL CLAMPED INTO Q-METER 1/2" AWAY FROM TERMINALS,
WITH START END OF COIL TO LOW SIDE.

Q- 125 AT 25 MC.

C DISTRIB. 1.0 $\mu m f$ (FOR REF. ONLY)

PRIMARY

$L = 0.385 \mu h$ (FOR REF. ONLY.)

C DISTRIB. 1.3 $\mu m f$ (FOR REF. ONLY)

REQ.	ITEM	PART NO.	DESCRIPTION	SYMBOL
X	4	WI-122-24	MAGNET WIRE, SINGLE #24	
X	3	GL-102	Q-MAX	
X	2	WI-122-20	MAGNET WIRE, SINGLE #20	
1	1	CI 127-1	CORE, TOROID	

REQ.	ITEM	PART NO.	DESCRIPTION	SYMBOL
— W —			THE TECHNICAL MATERIAL CORP. MAMARONECK, NEW YORK	
STOCK SIZE			TZ-115 ASSEMBLY	
— W —			TRANS. ANT. BAND #8 FREQ 24-32 MC.	
MATERIAL				
— W —		— W —	G. Senear	BP
TYPE & TEMPER		HEATTREAT. SPEC.	DRAWN	CHECKED
— W —		— W —	J. ANGER	
FINISH & SPEC. NO.		ELEC. DES. APP.	MECH. DES. APP.	

B NOTE ADDED

1-12-67 17575 RME C.D.L

A C.DISTRIB ADDED TO PRI. & SEC.

11-12 7651 GH J. De W

SYM DESCRIPTION DATE CH. NO. DRAFTS CHECKER ENG. APP.

UNLESS OTHERWISE SPECIFIED:

SCALE: DO NOT SCALE

DIMENSIONS ARE IN INCHES

MAXIMUM ALLOWABLE TOLERANCES HAVE BEEN DETERMINED AND ANY DEVIATIONS WILL BE CAUSE FOR REJECTION. REMOVE ALL BURRS AND SHARP EDGES

TOLERANCES ON

FRACTIONAL ± 1/64 DECIMAL ± .005 ANGLES ± 1/2°

A-2531

B

SYMBOL(S)	ITEM NO.	USED TO MOUNT	QTY	REQ. PER UNIT	USED ON			A2535	B
					MODEL	ASS'Y. NO.	DATE		
				1	CU-2		9/24/64		
C307,308	1								
	2	FOR J301,302	2						
	3	FOR J303							
J303	6			16	24	LWS04MRN	WASHER, LOCK, SPLIT		
R301	8			4	23	SCFP0832BN6	SCREW, MACHINE		
	9	CB21	2	2	22	MS1285	PLATE, MOUNTING		
		NP	4	2	21	CL254	COIL, RF		
	10	MS3102	4	1	20	CL178	COIL, RF		
	11	MS3102	4	1	19	A1503-2	CAN & END BRACKET ASSEMBLY		
	12	CB21	2	1	18	A1503-1	CAN & END BRACKET ASSEMBLY		
		NP	4	2	17	PX104-6-034	INSULATION SLEEVING SZ 20		BLUE
	13	A1503	16	2	16	PX104-3-034	INSULATION SLEEVING SZ 20		RED
		MS3102	4	2	15	TE113-120	TERMINAL, LUG		
	14	NP102	4	4	14	NTH0348BN6	NUT, PLAIN, HEX		
	15	MS3102	2	20	13	SCBP0440BN5	SCREW, MACHINE		
	16	WIRING	2	6	12	SCBP0348BN3	SCREW, MACHINE		
	17	WIRING	2	4	11	NTH0440BN8	NUT, PLAIN, HEX		
L305	20			4	10	LWE04MRN	WASHER, LOCK, EXTERNAL		
L303,304	21			6	9	LWE03MRN	WASHER, LOCK, EXTERNAL		
	22	CU-2	2	1	8	RR122-0.6	RESISTOR, FIXED, FILM-GLASS		
	23	CU-2	4	1	7	NP102-17	PLATE, ID		
	24	A1503	16	1	6	MS3102A14S2S	CONNECTOR, RECPEPTACLE, FEMALE		
				1	5	MS1181-2	COVER		
				1	4	LD390/MS1180-2	WRAPAROUND		
				1	3	HB110-4	CAP, PROTECTIVE, DUST, NM		
				2	2	HB110-3	CAP, PROTECTIVE, DUST, NM		
				2	1	CB21PX152K	CAPACITOR, FIXED, MICA		

SYM	DESCRIPTION	DATE	CH. NO.	DRAFTS	CHECKER	ENG. APP.	REQ.	ITEM	PART NO.	DESCRIPTION	SYMBOL
B	ADDED IT. 24; IT. 10 QTY WAS 2	2/3/66	1570a	JL	<i>CB</i>	<i>MH</i>				THE TECHNICAL MATERIEL CORP. MAMARONECK. NEW YORK FINAL ASSEMBLY, CU-2	
A	REDRAWN - NO PT NO. WAS CHGS 4 SIZE	9-24		16							
UNLESS OTHERWISE SPECIFIED DIMENSIONS ARE IN INCHES AND INCLUDE CHEMICALLY APPLIED OR PLATED FINISHES		SCALE					MATERIAL				
							TYPE & TEMPER		HEAT TREAT. SPEC.		
							DRAWN		CHECKED		
							FINISH & SPEC. NO.		ELEC. DES. APP. MECH. DES. APP.		
DECIMALS .X ± .05 .XX ± .01 .XXX ± .005		FRACTIONS ± 1/64 ANGLES ± 0° 30'		TOLERANCES			CODE		A2535		B

SYMBOL(S)	ITEM NO.	USED TO MOUNT OR REMARK	QTY
	3	HA102	4
	8	HA102	4
	9	A2568	3
	10	TK113	12
	11	HA102	4
	12	A2568 WIRING	X
	5	For DET SW	

REQ. PER UNIT	USED ON			A2536
	MODEL	ASS'Y. NO.	DATE	
I	HFA-1			

NOTE: DELETE ITEM NO. 13 WHEN USED WITH DDR-5A1A

2	13	CA480-3-4.50	LEAD, ELECTRICAL
X	12	BS100	SOLDER, TIN ALLOY
4	11	SCHH1032BN10	SCREW, MACHINE
12	10	SCFP1032BN7	SCREW, MACHINE
3	9	SCBP0632BN7	SCREW, MACHINE
4	8	LWS10MRN	WASHER, LOCK, SPLIT
1	7	MS2861	COVER, BOTTOM
1	6	MS2860	COVER, TOP
2	5	MP123-5FB	KNOB
2	4	HA102-13BN	HANDLE, BOW
4	3	CU139-2B	FERRULE, HANDLE
1	2	A2569	CHASSIS/FRAME ASSEMBLY
1	1	A2568	PANEL ASSEMBLY, FRONT

SYM	DESCRIPTION	DATE	CH. NO.	DRAFTS	CHECKER	ENG. APP.	REQ. ITEM	PART NO.	DESCRIPTION	SYMBOL	
A	ITEM 13 WAS CA480-16-4.50	2.27.67	17850	4/10	<i>[Signature]</i>	<i>[Signature]</i>			THE TECHNICAL MATERIEL CORP. MAMARONECK. NEW YORK HFA-1 FINAL ASSEMBLY		
O	ORIGINAL RELEASE FOR PRODUCTION	4-22-64	O	A.M.		<i>[Signature]</i>					
UNLESS OTHERWISE SPECIFIED DIMENSIONS ARE IN INCHES AND INCLUDE CHEMICALLY APPLIED OR PLATED FINISHES		SCALE					MATERIAL		ENG COORD		
TOLERANCES		CODE					TYPE & TEMPER HEAT TREAT. SPEC.		DRAWN CHECKED		FINAL APPROVAL
DECIMALS .X ± .05 .XX ± .01 .XXX ± .005		FRACTIONS ± 1/64 ANGLES ± 0° 30'					FINISH & SPEC. NO.		ELEC. DES. APP. MECH. DES. APP.		A2536

THE CONTENTS OF THIS DRAWING ARE THE EXCLUSIVE PROPERTY OF THE TECHNICAL MATERIEL CORP. ITS UNAUTHORIZED USE FOR REPRODUCTION IN WHOLE OR IN PART IS STRICTLY FORBIDDEN.

REQ.
PER
UNIT

USED ON

MODEL

ASS'Y. NO.

DATE

1

HSP-2

A-2538

ITEM NO.	USED TO MOUNT	QUAN.
5	MS-2864	9
	A-2580	9
6	MS-2864	9
	A-2580	9
7	A-2579	4

REQ.	ITEM	PART NO.	DESCRIPTION	SYMBOL
X	8	BS-100	Solder, Soft	
4	7	SCBP0632BN7	Screw, Machine	
18	6	SCBP0632BN4	Screw, Machine	
18	5	LWEO6MRM	Washer, Lock, External	
1	4	MS-2864	Cover, Top	
1	3	A-2581	Wraparound Chassis	
1	2	A-2580	Bottom Chassis Assembly	
1	1	A-2579	Front Panel Assembly	

SYM	DESCRIPTION	DATE	CH. NO.	DRAFTS	CHECKER	ENG. APP.	REQ.	ITEM	PART NO.	DESCRIPTION	SYMBOL
UNLESS OTHERWISE SPECIFIED DIMENSIONS ARE IN INCHES AND INCLUDE CHEMICALLY APPLIED OR PLATED FINISHES							THE TECHNICAL MATERIEL CORP. MAMARONECK. NEW YORK				
SCALE							STOCK SIZE				
TOLERANCES							FINAL ASSEMBLY, HSP-2				
DECIMALS .X ± .05 .XX ± .01 .XXX ± .005							MATERIAL				
FRACTIONS ± 1/64 ANGLES ± 0° 30'							TYPE & TEMPER HEAT TREAT. SPEC.				
CODE							DRAWN				
FINISH & SPEC. NO.							CHECKED				
ELEC. DES. APP.							MECH. DES. APP.				
ELEC. DES. APP.							FINAL APPROVAL				
ELEC. DES. APP.							A-2538				

THE CONTENTS OF THIS DRAWING ARE THE EXCLUSIVE PROPERTY OF THE TECHNICAL MATERIEL CORP. ITS UNAUTHORIZED USE FOR REPRODUCTION IN WH LE OR IN PART IS STRICTLY FORBIDDEN.

REQ.
PER
UNIT

USED ON

MODEL

ASS'Y. NO.

DATE

1

SPU-2

A-2570

NOTE: ITEMS 9,10,11,12, & 13 ARE NORMALLY SUPPLIED AS LOOSE ITEMS.

ITEM

NO. USED TO MOUNT QUAN.

2	A-2572	6	1	13	TM-105-16AR	TERM. BD, FANNING TYPE	
			1	12	TM-105-16AL	TERM. BD, FANNING TYPE	
			1	11	PL-208	CONNECTOR, PLUG, AUDIO	P1
3	A-2571	4	1	10	PJ-309	CONNECTOR, PLUG, TELEPHONE	
			1	9	CA-555-1	CABLE ASSY, POWER	W1
8	A-2572	6	6	8	LWE06MRM	WASHER, LOCK, EXTERNAL	
			1	7	A-2573	CHASSIS/FRAME ASSEMBLY	
			1	6	A-2572	REAR PLATE ASSEMBLY	
			1	5	A-2571	FRONT PANEL ASSEMBLY	
				4	BS-100	SOLDER, SOFT	
			4	3	SCBP0632BN7	SCREW, MACHINE	
			6	2	SCBP0632BN6	SCREW, MACHINE	
			2	1	MS-3026	COVER, TOP & BOTTOM	

REQ.	ITEM	PART NO.	DESCRIPTION			SYMBOL
THE TECHNICAL MATERIEL CORP. MAMARONECK. NEW YORK						
STOCK SIZE						
FINAL ASSEMBLY, SPU-2						
MATERIAL						
SYM	DESCRIPTION	DATE	CH. NO.	DRAFTS	CHECKER	ENG. APP.
UNLESS OTHERWISE SPECIFIED DIMENSIONS ARE IN INCHES AND INCLUDE CHEMICALLY APPLIED OR PLATED FINISHES		SCALE				
DECIMALS .X ± .05 .XX ± .01 .XXX ± .005		FRACTIONS ± 1/64 ANGLES ± 0° 30'	TOLERANCES		CODE	
TYPE & TEMPER		HEAT TREAT. SPEC.	DRAWN	CHECKED	FINAL APPROVAL	
FINISH & SPEC. NO.		ELEC. DES. APP.	MECH. DES. APP.	A-2570		

THE CONTENTS OF THIS DRAWING ARE THE EXCLUSIVE PROPERTY OF THE TECHNICAL MATERIEL CORP. ITS UNAUTHORIZED USE FOR REPRODUCTION IN WHOLE OR IN PART IS STRICTLY FORBIDDEN.

REQ. PER UNIT	USED ON		A-2572	A
	MODEL	ASS'Y. NO.		
1	SPU-2	A-2570		

ITEM NO.	USED TO MOUNT	QUAN.					
2	TM-100-16	4					
4	TM-100-16	2					
6	TM-100-16	8					
7	JJ-175	2					
	CA-728	1					
8	TM-100-16	8					
9	JJ-175	2	1	20	FW06HBN	WASHER, FLAT	
	CA-728	1	0-3	19	WL-100-7	WIRE, BUSS, SIZE 22	
10	TM-100-16	8	0-3	18	PX-104-1- 034	SLEEVING, SIZE 20, BLACK	
11	CA-728	1	3	17	TE-104-2	TERMINAL, LOCKING	
	JJ-175	2	2	16	TE-149- 120	LUG, SOLDER	
12	JJ-175	1	0-10	15	WL-100-3	WIRE, BUSS, SIZE 14	
14	JJ-175 WIRING	1	2	14	CC-100-15	CAP., FIXED, CERAMIC, DISC, .005 uf	C49,50
15	TM-100 WIRING	0-10	1	13	CA-728	CABLE, ASSEMBLY, TERMINAL STRIP	
16	TM-100	2	1	12	TE-149- 144	LUG, SOLDER	
17	JJ-175 WIRING	3	3	11	SCBP0632BN6	SCREW, MACHINE	
18	JJ-175 WIRING	0-3	8	10	SCBP0440BN9	SCREW, MACHINE	
19	JJ-175 WIRING	0-3	3	9	NTH0632BN8	NUT, HEXAGON	
20	CA-728	1	8	8	NTH0440BN6	NUT, HEXAGON	
			3	7	LWE06MRN	WASHER, LOCK, EXTERNAL	
			8	6	LWE04MRN	WASHER, LOCK, EXTERNAL	
			2	5	TM-100-16	TERMINAL BD., BARRIER TYPE	E1,2
			2	4	PX-337-16	INSUL, TERMINAL BOARD	
			1	3	LD-1149/MS-3025	PLATE, REAR	
			4	2	MS-154-1	PLATE, STRADDLE	
			1	1	JJ-175	CONNECTOR, RECEPTACLE, MALE	J4

							REQ. ITEM	PART NO.	DESCRIPTION			SYMBOL	
							STOCK SIZE			THE TECHNICAL MATERIEL CORP. MAMARONECK. NEW YORK			
							MATERIAL			REAR PLATE ASSEMBLY			
A	ITEM(3) WAS MS-3025(LD-1149) ITEMS(12,164) DEC.POINTS DELETED.						B-163	9611	AK.	JAG	MS		
SYM	DESCRIPTION						DATE	CH. NO.	DRAFTS	CHECKER	ENG. APP.		
UNLESS OTHERWISE SPECIFIED DIMENSIONS ARE IN INCHES AND INCLUDE CHEMICALLY APPLIED OR PLATED FINISHES						SCALE							
DECIMALS .X ± .05 .XX ± .01 .XXX ± .005						FRACTIONS ± 1/64 ANGLES ± 0° 30'						TOLERANCES	
						TYPE & TEMPER						HEAT TREAT. SPEC.	
						DRAWN						CHECKED	
						FINISH & SPEC. NO.						ELEC. DES. APP.	
												MECH. DES. APP.	
												A-2572	
												A	

THE CONTENTS OF THIS DRAWING ARE THE EXCLUSIVE PROPERTY OF THE TECHNICAL MATERIEL CORP. ITS UNAUTHORIZED USE FOR REPRODUCTION IN WHOLE OR IN PART IS STRICTLY FORBIDDEN.

REQ. PER UNIT

USED ON

MODEL

ASS'Y. NO.

DATE

1

HNF-1

A-2575

A-2574

A

ITEM NO.	USED TO MOUNT	QUAN.							
11	PO-229	4							
12	MS-2735	3							
13	PO-229	4							
14	MS-2735	3	1.	24	MP-123-SUB				KNOB, INSTRUMENT
15	PO-229	4	0-6	23	WL-100-6				WIRE, BUSS, SIZE 20
16	HA-102	4	0-1	22	PX-104-4-.034				SLEEVING, SIZE 20, GREEN
17	NP-102	4	0-2	21	PX-104-1-.034				SLEEVING, SIZE 20, BLACK
18	PO-229	4	X	20	BS-100				SOLDER, SOFT
19	MS-2735	3	3	19	TE-117-28				SPACER, STANDOFF
20	SW-303 WIRING	X	4	18	TE-117-1				SPACER, STANDOFF
21	SW-303 WIRING	0-2	4	17	SFB0256SN3				SCREW, TAPPING
22	SW-303 WIRING	0-1	4	16	SCFP1032BN8				SCREW, MACHINE
23	SW-303 WIRING	0-6	4	15	SCBP0632BN7				SCREW, MACHINE
			3	14	SCBP0440BN6				SCREW, MACHINE
			4	13	LWE06MRN				WASHER, LOCK, EXTERNAL
			3	12	LWE04MRN				WASHER, LOCK, EXTERNAL
			4	11	FW06HBN				WASHER, FLAT
			1	10	SW-303				SWITCH, ROTARY
			1	9	PO-229				DRIVE, VERNIER
			1	8	NP-424				NAMEPLATE, ID., NAVY (WHEN REQ.)
			1	7	NP-102-44				NAMEPLATE, ID., COMM. (WHEN REQ.)
			1	6	MS-2735				INDICATOR, TUNING
			1	5	MS-2716(LD-1061)				PANEL, FRONT
			1	4	MP-123-5FB				KNOB, INSTRUMENT
			1	3	MC-124				COUPLING, FLEXIBLE
			2	2	HA-102-11BN				HANDLE
			4	1	CU-139-2B				FERRULE, HANDLE

S4001A, B

REQ.	ITEM	PART NO.	DESCRIPTION	SYMBOL
THE TECHNICAL MATERIEL CORP.				
MAMARONECK. NEW YORK				
STOCK SIZE				
FRONT PANEL ASSEMBLY, HNF-1				
MATERIAL				
UNLESS OTHERWISE SPECIFIED DIMENSIONS ARE IN INCHES AND INCLUDE CHEMICALLY APPLIED OR PLATED FINISHES				
SCALE		DRAWN		
TYPE & TEMPER		HEAT TREAT. SPEC.		CHECKED
DECIMALS .X ± .05 .XX ± .01 .XXX ± .005		FRACTIONS ± 1/64 ANGLES ± 0° 30'		FINAL APPROVAL
TOLERANCES		FINISH & SPEC. NO.		ELEC. DES. APP.
				MECH. DES. APP.

THE CONTENTS OF THIS DRAWING ARE THE EXCLUSIVE PROPERTY OF THE TECHNICAL MATERIEL CORP. ITS UNAUTHORIZED USE FOR REPRODUCTION IN WHOLE OR IN PART IS STRICTLY FORBIDDEN.

REQ. PER UNIT	USED ON			A-2575	A
	MODEL	ASS'Y. NO.	DATE		
1	HNF-1				

ITEM NO.	USED TO MOUNT	QUAN.					
6	JJ-200	4					
7	MS-2914	8					
8	FS-102	20					
9	FS-102	20					
10	JJ-200	4					
11	JJ-200	4					
12	A-2574	8					
13	FS-102	20	4	18	SCFP1032BN8	SCREW, MACHINE	
			8	17	SCBP0632BN5	SCREW, MACHINE	
16	SW-50% WIRING	X	X	16	BS-100	SOLDER, SOFT	
			1	15	A-2574	FRONT PANEL ASSEMBLY	
17	MS-2914	8	1	14	A-2537	MAIN CHASSIS ASSEMBLY	
			20	13	SCFP0348BN5	SCREW, MACHINE	
18	TK114-18	4	8	12	SCBP0632BN7	SCREW, MACHINE	
			4	11	SCBP0440BN5	SCREW, MACHINE	
			4	10	NTH0440BN8	BUT, HEXAGON	
			20	9	NTH0348BN6	BUT, HEXAGON	
			20	8	LWS03MRN	WASHER, LOCK, SPLIT	
			8	7	LWE06MRN	WASHER, LOCK, EXTERNAL	
			4	6	LWE04MRN	WASHER, LOCK, EXTERNAL	
			10	5	FS-102-1	SPRING, "S" TYPE	
			1	4	MS-2914(LD-1065)	PANEL, REAR	
			2	3	MS-2913	PLATE, SIDE, RIGHT & LEFT	
			1	2	MS-2908	COVER, TOP	
			1	1	MS-2907	COVER, BOTTOM	

REQ.	ITEM	PART NO.	DESCRIPTION				SYMBOL
			THE TECHNICAL MATERIEL CORP. MAMARONECK. NEW YORK				
			STOCK SIZE				
A	IT. 18 WAS ADDED	9.25.64	12405	92.	ⓐ	TEJ	FINAL ASSEMBLY, HNF-1
SYM	DESCRIPTION	DATE	CH. NO.	DRAFTS	CHECKER	ENG. APP.	MATERIAL
UNLESS OTHERWISE SPECIFIED DIMENSIONS ARE IN INCHES AND INCLUDE CHEMICALLY APPLIED OR PLATED FINISHES		SCALE					
DECIMALS .X ± .05 .XX ± .01 .XXX ± .005		FRACTIONS ± 1/64 ANGLES ± 0° 30'		TOLERANCES			
TYPE & TEMPER		HEAT TREAT. SPEC.		DRAWN		CHECKED	
FINISH & SPEC. NO.		ELEC. DES. APP.		MECH. DES. APP.		A-2575	
				A-2575		A	

THE CONTENTS OF THIS DRAWING ARE THE EXCLUSIVE PROPERTY OF THE TECHNICAL MATERIEL CORP. ITS UNAUTHORIZED USE FOR REPRODUCTION IN WHOLE OR IN PART IS STRICTLY FORBIDDEN.

REQ. PER UNIT	USED ON			A-2576
	MODEL	ASS'Y. NO.	DATE	
	HAF-1	A-3045		

ITEM NO.	SYMBOL(S)						
4	S7200A,B,7201A,B S7202A,B,7203A,B			12"	14	WL-100-8	Wire, Buss, #24
				11"	13	PX-104-3-.022	Sleeving, Size 22, Red
					12	BS-100	Solder, Soft
				16	11	SLHC0632SP2	Setscrew
ITEM NO.	USED TO MOUNT	QUAN.					
1	HA-102	4	4	4	8	SW-302	Switch, Rotary
2	HA-102	4	4	1	7	NP-419	Nameplate, Identification (Navy)
				1	6	NP-102-45	Nameplate, Identification (Comm.)
10	NP-	4	4	1	5	MS-2778(ID-1019)	Panel, Front
				4	4	MP-123-5FB	Knob, Instrument
				4	3	MC-102	Coupling, Fixed
11	MC-102	16	4	2	2	HA-102-11BN	Handle
				4	1	CU-139-2B	Ferrule, Handle

								REQ. ITEM	PART NO.	DESCRIPTION	SYMBOL		
								THE TECHNICAL MATERIEL CORP. MAMARONECK. NEW YORK					
								STOCK SIZE					
								FRONT PANEL ASSEMBLY, HAF-1					
								MATERIAL					
SYM	DESCRIPTION	DATE	CH. NO.	DRAFTS	CHECKER	ENG. APP.							
UNLESS OTHERWISE SPECIFIED DIMENSIONS ARE IN INCHES AND INCLUDE CHEMICALLY APPLIED OR PLATED FINISHES		SCALE						John Medico		JMA	BP		
								TYPE & TEMPER	HEAT TREAT. SPEC.	DRAWN	CHECKED	FINAL APPROVAL	
DECIMALS .X ± .05 .XX ± .01 .XXX ± .005	TOLERANCES	FRACTIONS ± 1/64 ANGLES ± 0° 30'	CODE						JMA	16/11/63	A-2576		
								FINISH & SPEC. NO.		ELEC. DES. APP.	MECH. DES. APP.		

THE CONTENTS OF THIS DRAWING ARE THE EXCLUSIVE PROPERTY OF THE TECHNICAL MATERIEL CORP. ITS UNAUTHORIZED USE FOR REPRODUCTION IN WHOLE OR IN PART IS STRICTLY FORBIDDEN.

REQ. PER UNIT	USED ON			A-2579	A
	MODEL	ASS'Y. NO.	DATE		
1	HSP-2	A-2538			
1	HSP-3	A-3345			

ITEM NO.	USED TO MOUNT	QUAN.
1	HA-102	4
10	HA-102	4
11	NP-	4
12	ST-103	1
17	RV-107	2
	SW-148	2
ITEM NO.	SYMBOL(S)	
7	R9201, 9202	
9	S9202, 9203	

4	17	TE-111-2	Terminal, Lug
1-5	16	WL-100-6	Wire, Buss, Size 20
0-8	15	PX-104-6-.034	Sleeving, Size 20, Blue
0-8	14	PX-104-2-.034	Sleeving, Size 20, Yellow
X	13	BS-100	Solder, Soft
1	12	TE-129	Terminal, Lug
4	11	SFB0256SN3	Screw, Thread Cutting
4	10	SCFP1032BN8	Screw, Machine
2	9	SW-148	Switch, Rotary
1	8	ST-103-1-62	Switch, Toggle
2	7	RV-107-T4	Attenuator, "T" Pad
1	6	NP-487	Nameplate, Identification, Navy
1	5	NP-102-48	Nameplate, Identification, Comm.
1	4	MS-2951(LD-1109)	Panel, Front
4	3	MP-123-5FB	Knob, Instrument
2	2	HA-102-11BN	Handle
4	1	CU-139-2B	Ferrule, Handle

S9201

REQ.	ITEM	PART NO.	DESCRIPTION	SYMBOL
THE TECHNICAL MATERIEL CORP. MAMARONECK. NEW YORK				
STOCK SIZE				
FRONT PANEL ASSEMBLY,				
MATERIAL				
UNLESS OTHERWISE SPECIFIED DIMENSIONS ARE IN INCHES AND INCLUDE CHEMICALLY APPLIED OR PLATED FINISHES			SCALE	
DECIMALS .X ± .05 .XX ± .01 .XXX ± .005	TOLERANCES	FRACTIONS ± 1/64 ANGLES ± 0° 30'	CODE	
TYPE & TEMPER		HEAT TREAT. SPEC.	DRAWN	CHECKED
FINISH & SPEC. NO.		ELEC. DES. APP.	MECH. DES. APP.	
A DWG UPDATED 11/15/63 10429 [Signature]			John Medina 1/15/63	[Signature] A-2579
			1/15/63	A

THE CONTENTS OF THIS DRAWING ARE THE EXCLUSIVE PROPERTY OF THE TECHNICAL MATERIEL CORP. ITS UNAUTHORIZED USE FOR REPRODUCTION IN WHOLE OR IN PART IS STRICTLY FORBIDDEN.

REQ. PER UNIT	USED ON			A-2580
	MODEL	ASS'Y. NO.	DATE	
	1	HSP-2	A-2538	

ITEM NO. USED TO MOUNT QUAN.

ITEM NO.	SYMBOL(S)	ITEM NO.	QUAN.	DESCRIPTION
		5		RW-107-5 4
		6		RW-107-5 4
		7		RW-107-5 4
		8		TE-102-2 13
1	L9214 thru L9226	9		RW-107-5 4
2	C9201 thru C9213	11		RW-107-5 4
4	R9203, 9204, 9205, 9206	12		RW-107-5 8
		13		TE-102 1
		14		TE-102 13
		15		TE-102 26
		16		TE-102 13
		18		RW-107 Wiring 0-2
		0-2		18 WL-100-6 Wire, Buss, Size 20
		X		17 BS-100 Solder, Soft
		13		16 TE-104-1 Terminal, Lug, No. 4
		26		15 LWEO4MRN Washer, Lock, External
		13		14 SCBP0440BN4 Screw, Machine
		13		13 TE-149-120 Terminal, Lug
		8		12 WA-102-4 Washer, Fibre, Shoulder
		4		11 TE-104-2 Terminal, Lug, No-6
		26		10 TE-102-2 Terminal, Turret
		4		9 SCBP0632BN22 Screw, Machine
		13		8 SCBP0440BN3 Screw, Machine
		4		7 NTH0632BN8 Nut, Hexagon
		4		6 LWEO6MRN Washer, Lock, External
		4		5 FW06HBN Washer, Flat
		4		4 RW-107-5 Resistor, Fixed, Wirewound
		1		3 MS-2953 Chassis, Bottom
		13		2 CM15C511.5 Capacitor, Fixed, Mica
		13		1 CL-270-10 Coil, RF, Fixed

REQ. ITEM	PART NO.	DESCRIPTION	SYMBOL
		THE TECHNICAL MATERIEL CORP. MAMARONECK, NEW YORK	
STOCK SIZE		BOTTOM CHASSIS ASSEMBLY	
MATERIAL			
SYM	DESCRIPTION	DATE	CH. NO. DRAFTS CHECKER ENG. APP.
UNLESS OTHERWISE SPECIFIED DIMENSIONS ARE IN INCHES AND INCLUDE CHEMICALLY APPLIED OR PLATED FINISHES		SCALE	
DECIMALS .X ± .05 .XX ± .01 .XXX ± .005	TOLERANCES	FRACTIONS ± 1/64 ANGLES ± 0° 30'	CODE
TYPE & TEMPER		HEAT TREAT. SPEC.	DRAWN
FINISH & SPEC. NO.		ELEC. DES. APP.	MECH. DES. APP.
		16 2/3/63	A-2580

THE CONTENTS OF THIS DRAWING ARE THE EXCLUSIVE PROPERTY OF THE TECHNICAL MATERIEL CORP. ITS UNAUTHORIZED USE FOR REPRODUCTION IN WHOLE OR IN PART IS STRICTLY FORBIDDEN.

REQ. PER UNIT	USED ON			A-2581
	MODEL	ASS'Y. NO.	DATE	
	1	HSP-2	A-2538	

ITEM NO. SYMBOL(S)

1 L9201 thru 9213

5 TB9201,9202,9203

ITEM NO.	USED TO MOUNT	QUAN.	X	15	BS-100	Solder, Soft
			1-9	14	WL-100-4	Wire, Buss, Size 16
			0-10	13	WL-100-6	Wire, Buss, Size 20
2	TM-100-16	6	2-5	12	PX-100-1-.095	Sleeving, Size 11, Black
4	TM-100-16	6	1	11	CA-713	Cable, Main
6	TM-100-16	12	1-8	10	PX-104-7-.034	Sleeving, Size 20, Gray
7	TM-100-16	12	6	9	TE-149-120	Terminal, Lug
8	TM-100-16	12	12	8	SCBP0440BN8	Screw, Machine
9	TM-100-16	6	12	7	NTH0440BN6	Nut, Hexagon
10	CL-270 Wiring	1-8	12	6	LWE04MRE	Washer, Lock, External
12	CA-713 Wiring	2-5	3	5	TM-100-16	Terminal Board, Barrier Type
13	TM-100 Wiring	0-10	3	4	PX-337-16	Insulator, Terminal Board
14	TM-100 Ground	1-9	1	3	MS-2952(LD-1110)	Chassis, Wraparound
			6	2	MS-154-1	Plate, Straddle
			13	1	CL-270-10	Coil, RF, Fixed

							REQ. ITEM	PART NO.	DESCRIPTION	SYMBOL	
							THE TECHNICAL MATERIEL CORP. MAMARONECK. NEW YORK				
							STOCK SIZE				
							WRAPAROUND CHASSIS ASSEMBLY				
							MATERIAL				
SYM	DESCRIPTION	DATE	CH. NO.	DRAFTS	CHECKER	ENG. APP.					
UNLESS OTHERWISE SPECIFIED DIMENSIONS ARE IN INCHES AND INCLUDE CHEMICALLY APPLIED OR PLATED FINISHES		SCALE									
DECIMALS .X ± .05 .XX ± .01 .XXX ± .005		FRACTIONS ± 1/64 ANGLES ± 0° 30'		TOLERANCES							
							TYPE & TEMPER	HEAT TREAT. SPEC.	DRAWN	CHECKED	FINAL APPROVAL
									16 2/19/63		A-2581
							FINISH & SPEC. NO.		ELEC. DES. APP.	MECH. DES. APP.	

SYMBOL(S)	ITEM NO.	USED TO MOUNT	QTY
C6224	2		
MP6201	3		
MP6202			
R6221	8		
R6223			
	11	RV4	3
		SW116	1
	15	NP	4

REQ. PER UNIT	USED ON			A2582	A
	MODEL	ASS'Y. NO.	DATE		
1	HFI-1	A2585	4-22-64		

4	15	SFB0256SN3	SCREW, TAPPING, THREAD CUTTING	
0-5	14	WL100-7	WIRE, ELECTRICAL BUSS, SIZE 22	
0-4	13	PXI04-1-034	INSULATION SLEEVING, SIZE 22, BLACK	
	12	BS100	SOLDER, TIN ALLOY	
4	11	TE111-2	TERMINAL, LUG, 3/8D	
1	10	SW116	SWITCH, ROTARY	S6203
1	9	RV4NBYS253E	RESISTOR, VARIABLE, COMPOSITION	R6222
2	8	RV4NAYS2505A	RESISTOR, VARIABLE, COMPOSITION	
1	7	NP423	PLATE, IDENTIFICATION, NAVY	
1	6	NP102-42	PLATE, IDENTIFICATION, COML	
4	5	MP123-5FB	KNOB	
1	4	LD1045/MS2695	PANEL, FRONT	
2	3	MR157	VOLTMETER	
1	2	CC100-24	CAPACITOR, FIXED, CERAMIC, DISC, .02UF	
2	1	BB101	BUSHING, MACHINE THREAD	

OPTIONAL {

SYM	DESCRIPTION	DATE	CH. NO.	DRAFTS	CHECKER	ENG. APP.	REQ. ITEM	PART NO.	LAWNSBY	DESCRIPTION	SYMBOL
A	IT. 9 WAS RV4BTRD253F IT. 8 WAS RV4ATRD505B	2-16-64	15758	MS	QCS	MM				THE TECHNICAL MATERIEL CORP. MAMARONECK. NEW YORK PANEL ASSEMBLY, FRONT	
O	ORIGINAL RELEASE	4-22-64		LSB							
UNLESS OTHERWISE SPECIFIED DIMENSIONS ARE IN INCHES AND INCLUDE CHEMICALLY APPLIED OR PLATED FINISHES							SCALE		ENG COORD J. SABATINO 4-22-64 <i>Ric</i>		
DECIMALS .X ± .05 .XX ± .01 .XXX ± .005							TOLERANCES ± 1/64 ANGLES ± 0° 30'		DRAWN JED CHECKED L. GABEL 4-22-64		FINAL APPROVAL A2582
FINISH & SPEC. NO.							ELEC. DES. APP. MECH. DES. APP.		A		

REQ. PER UNIT	USED ON			A2585
	MODEL	ASS'Y. NO.	DATE	
	HFI-1			

1	10	MS2805	COVER, TOP	
1	9	MS2804	COVER, BOTTOM	
1	8	AX407	HFI-1 SUB ASSEMBLY	
1	7	AX313	AMPLIFIER, IF, SYMMETRICAL, 15KC	A6003
1	6	AX312	AMPLIFIER, IF, SYMMETRICAL, 1KC	A6001
1	5	AX311	AMPLIFIER, IF, SYMMETRICAL, 6KC	A6002
1	4	AX306	AMPLIFIER, IF, USB, 7.5KC	A6006
1	3	AX305	AMPLIFIER, IF, LSB, 7.5KC	A6007
1	2	AX304	AMPLIFIER, IF, LSB, 3.5KC	A6005
1	1	AX303	AMPLIFIER, IF, USB, 3.5KC	A6004

REQ.	ITEM	PART NO.	LAWNS BY	DESCRIPTION	SYMBOL						
				THE TECHNICAL MATERIEL CORP. MAMARONECK, NEW YORK							
				HFI-1 FINAL ASSEMBLY							
SYM	DESCRIPTION	DATE	CH. NO.	DRAFTS	CHECKER	ENG. APP.	MATERIAL				
UNLESS OTHERWISE SPECIFIED DIMENSIONS ARE IN INCHES AND INCLUDE CHEMICALLY APPLIED OR PLATED FINISHES		SCALE					ENG COORD 5/11/64	J. SABATINO 5/11/64	<i>RJC</i>		
DECIMALS .X ± .05 .XX ± .01 .XXX ± .005	TOLERANCES	FRACTIONS ± 1/64 ANGLES ± 0° 30'	CODE				TYPE & TEMPER	HEAT TREAT. SPEC.	DRAWN <i>DEL</i>	CHECKED <i>16</i>	FINAL APPROVAL A2585
							FINISH & SPEC. NO.	ELEC. DES. APP.	MECH. DES. APP.		

THE CONTENTS OF THIS DRAWING ARE THE EXCLUSIVE PROPERTY OF THE TECHNICAL MATERIEL CORP. ITS UNAUTHORIZED USE FOR REPRODUCTION IN WHOLE OR IN PART IS STRICTLY FORBIDDEN.

REQ. PER UNIT	USED ON			A-2586	F
	MODEL	ASS'Y. NO.	DATE		

USED ON	TMC PART NO.	ITEM 1	ITEM 17
BSP-3	A2586-1	AZ100	CA575-2
BSP-3A	A2586-2	AZ104	CA575-5
BSP-3B	A2586-3	AZ100A	CA575-5
BSP-3C	A2586-4	AZ104A	CA575-5

OPTIONAL

ITEM NO.	SYMBOL(S)	ITEM NO.	USED TO MOUNT	QUAN.	DESCRIPTION	SYMBOL
24	NP764	3			PLATE, ADAPTER, FUSE, 115VAC	
23	NP645	3			PLATE, ADAPTER, FUSE 230VAC	
22	FU-100-125	3			FUSE, CARTRIDGE, 1/8 AMP 230VAC FIOI	
21	CA-676-5-9.00	3			CABLE ASSEMBLY, POTENTIOMETER	
20	CA-676-4-9.00	3			CABLE ASSEMBLY, AMPL. TO FUSE	
19	CA-676-3-7.00	3			CABLE ASSEMBLY, AMPL. TO SPEAKER	
18	CA-676-2-9.00	2			CABLE ASSEMBLY, POWER, DC	
17	SEE CHART	1			CABLE ASSEMBLY, POWER, AC	W101
16	SFB0256SN3	2			SCREW, TAPPING, THREAD CUTTING	
15	SCHH1032BN8	4			SCREW, MACHINE	
14	SCBP0832BN10	12			SCREW, MACHINE	
13	LWS10MRN	4			WASHER, LOCK, SPLIT	
12	RV4 NAYSD253A	3			RESISTOR, VARIABLE, COMPOSITION	
11	NP-	1			NAMEPLATE, IDENTIFICATION, NAVY	
10	NP 540-1	1			NAMEPLATE, IDENTIFICATION, COMM.	
9	LD-1176/mS3068	1			PANEL, FRONT	
8	MS-395	3			GRILL, SPEAKER	
7	MP-100-1	3			KNOB, INSTRUMENT, FLUTED TYPE	
6	LS-101	3			SPEAKER, P.M.	
5	HA-102-2BN	2			HANDLE	
4	FU-100-.250	3			FUSE, CARTRIDGE, 1/4 AMP 115 VAC FIOI	
3	FH-104-2	3			HOLDER, FUSE	
2	CU-139-2B	4			FERRULE, HANDLE	
1	SEE CHART	3			AMPLIFIER, AUDIO FREQUENCY	

F	IT.10 WAS SEE CHART IT.10 COL. DELETED.	145/65	14927	H.V.	JCB	MM
E	IT. 24 ADDED, USED ON COLUMN ADDED A-2586-3-4.00	5/24/65	14118	E	JCB	J
D	IT. 4 WAS FU102-3/13; 1/4 AMP WAS SLO-BLD 3/8; IT. 22 WAS FU102-187; 1/8 AMP WAS SLO-BLD 3/16.	3-31-65	13767	L.F.	JCB	J
C	TMC PART NO. WAS A2586-42100; ON A2586-1 ITEM 10-1 ADDED	10.21.64	12715	WB	JCB	MM
B	ITEM 22 & 23 ADDED	9.25.64	12406	WB	@	MM
A	TMC PART NO. CHART ADDED IT. 12 WAS RV4 ATRD253 B IT. 9. W. MS-3068 (LD-1176), IT. 17 W. CA-575-2 IT. 1 WAS AZ-100, IT. 6 WAS LS101	8.6.64	12037	WB	N.P.	MM

SYM	DESCRIPTION	DATE	CH. NO.	DRAFTS	CHECKER	ENG. APP.	REQ.	ITEM	PART NO.	DESCRIPTION	SYMBOL	
UNLESS OTHERWISE SPECIFIED DIMENSIONS ARE IN INCHES AND INCLUDE CHEMICALLY APPLIED OR PLATED FINISHES							SCALE					
DECIMALS .X ± .05 .XX ± .01 .XXX ± .005							FRACTIONS ± 1/64 ANGLES ± 0° 30'					CODE
TOLERANCES							STOCK SIZE					
MATERIAL							FINAL ASSEMBLY, BSP-3					
TYPE & TEMPER							MATERIAL					
HEAT TREAT. SPEC.							DRAWN					
FINISH & SPEC. NO.							CHECKED					
ELEC. DES. APP.							FINAL APPROVAL					
MECH. DES. APP.							WG 1/22/63					
ELEC. DES. APP.							16/24/63					
MECH. DES. APP.							A-2586					
ELEC. DES. APP.							F					

THE CONTENTS OF THIS DRAWING ARE THE EXCLUSIVE PROPERTY OF THE TECHNICAL MATERIEL CORP. ITS UNAUTHORIZED USE FOR REPRODUCTION IN WHOLE OR IN PART IS STRICTLY FORBIDDEN.

REQ. PER UNIT

USED ON

MODEL

ASS'Y. NO.

DATE

A-2587

D

OPTIONAL

ITEM NO.	SYMBOL(S)	ITEM NO.	USED TO MOUNT	QUAN.	ITEM NO.	DESCRIPTION	SYMBOL
1	AR101,102	13	HA-102-2BN	4	24	NP764	PLATE, ADAPTER, FUSE 115 VAC
3	XF101(DS101,R103) XF102(DS102,R104)	14	LS-101&MS-395	8	23	NP645	PLATE, ADAPTER, FUSE 230 VAC
4	F101,102	15	HA-102-2BN	4	22	FU100-.125	FUSE, CARTRIDGE SLO-BLOW 1/4AMP 230VAC F101
6	LS101,102	16	NP-105	4	21	CA-676-5-9.00	CABLE ASSEMBLY, POTENTIOMETER
12	R101,102		NP-	4	20	CA-676-4-9.00	CABLE ASSEMBLY, AMPL. TO FUSE
				8	19	CA-676-3-7.00	CABLE ASSEMBLY, AMPL. TO SPEAKER
				1	18	CA-676-2-13.00	CABLE ASSEMBLY, POWER DC W102
				1	17	SEE CHART	CABLE ASSEMBLY, POWER, AC W101
				4	16	SFB0256SN3	SCREW, TAPPING, THREAD CUTTING
				4	15	SCH#1032BN8	SCREW, MACHINE
				8	14	SCBP0832BN10	SCREW, MACHINE
				4	13	LWS10MRN	WASHER, LOCK, SPLIT
				2	12	RV4 NAYSD253A	RESISTOR, VARIABLE, COMPOSITION
				1	11	NP-	NAMEPLATE, IDENTIFICATION, NAVY
				1	10	NP-103-76	NAMEPLATE, IDENTIFICATION, COMM.
				1	9	LD-1175/MS3067	PANEL, FRONT
				2	8	MS-395	GRILL, SPEAKER
				2	7	MP-100-1	KNOB, INSTRUMENT, FLUTED TYPE
				2	6	LS-101	SPEAKER, P.M.
				2	5	HA-102-2BN	HANDLE
				2	4	FU-100-.250	FUSE, CARTRIDGE, SLO-BLO 1/4AMP 115 VAC F101
				2	3	FH-104-2	HOLDER, FUSE
				4	2	CU-139-2B	FERRULE, HANDLE
				2	1	SEE CHART	AMPLIFIER, AUDIO FREQUENCY

TMC PART NO.	ITEM 1	ITEM 17	USED ON
A2587	AZ100	CA575-2	BSP-2
A2587-2	AZ104	CA575-5	BSP-2A
A2587-3	AZ100A	CA575-5	BSP-2B
A2587-4	AZ104A	CA575-5	BSP-2C

NOTE: USE ITEM 4 OF 22 AS APPROPRIATE.

SYM	DESCRIPTION	DATE	CH. NO.	DRAFTS	CHECKER	ENG. APP.
D	IT. 24 USED ON, A2587-3, 4 ADD'D	5/26/63	14118	*	JCS	
C	IT. 22 WAS FU102-.187; IT. 4 WAS FU102-.375.	3-31-65	13767	9.2.	JCS	
B	ITEM 22 & 23 ADD'D	9-25-64	12406	WB	@	
A	TMC PART NO. CHART ADD. IT. 17 WAS CA-575-2 IT. 1 WAS AZ-100, IT. 2 W. RV4ATR0253B IT. 6 W. LS-101, IT. 9 W. MS-3067(LD-1175)	8-6-64	12037	WB	WB	

REQ.	ITEM	PART NO.	DESCRIPTION	SYMBOL
THE TECHNICAL MATERIEL CORP. MAMARONECK. NEW YORK				
STOCK SIZE				
MATERIAL				
UNLESS OTHERWISE SPECIFIED DIMENSIONS ARE IN INCHES AND INCLUDE CHEMICALLY APPLIED OR PLATED FINISHES			SCALE	
DECIMALS X ± .05 XX ± .01 XXX ± .005		FRACTIONS ± 1/64 ANGLES ± 0° 30'		CODE
TOLERANCES		TYPE & TEMPER		HEAT TREAT. SPEC.
		DRAWN		CHECKED
		FINISH & SPEC. N.		ELEC. DES. APP.
		MECH. DES. APP.		

THE CONTENTS OF THIS DRAWING ARE THE EXCLUSIVE PROPERTY OF THE TECHNICAL MATERIEL CORP. ITS UNAUTHORIZED USE FOR REPRODUCTION IN WHOLE OR IN PART IS STRICTLY FORBIDDEN.

REQ. PER UNIT

USED ON

MODEL

ASS'Y. NO.

DATE

A-2588

D

ITEM NO.	SYMBOL(S)	ITEM NO.	USED TO MOUNT	QUAN.
3	XF101(DS101, R102)	13	HA-102-2BN	4
		14	LS-101&MS-395	4
		15	HA-102-2BN	4
		16	NP-103	4
			NP-	WHEN REQ.

OPTIONAL

1	23	NP764	PLATE, ADAPTER, FUSE 115VAC	
1	22	NP645	PLATE, ADAPTER, FUSE 230 VAC	
1	21	FU100-125	FUSE, CARTRIDGE, 1/8 AMP 230VAC FIO101	
1	20	CA-676-5-9.00	CABLE ASSEMBLY, POTENTIOMETER	
1	19	CA-676-4-9.00	CABLE ASSEMBLY, AMPL. TO FUSE	
1	18	CA-676-3-7.00	CABLE ASSEMBLY, AMPL. TO SPEAKER	
1	17	SEE CHART	CABLE ASSEMBLY, POWER, DC	W101
4	16	SFB0256SN3	SCREW, TAPPING, THREAD-CUTTING	
4	15	SCHH1032BN8	SCREW, MACHINE	
4	14	SCBP0332BN10	SCREW, MACHINE	
4	13	LWS10MRN	WASHER, LOCK, SPLIT	
1	12	RV4NAYSD253A	RESISTOR, VARIABLE, COMPOSITION	R101
1	11	NP-	NAMEPLATE, IDENTIFICATION, NAVY	
1	10	NP-103-76	NAMEPLATE, IDENTIFICATION, COMM.	
1	9	LD-1172/MS3064	PANEL, FRONT	
1	8	MS-395	GRILL, SPEAKER	
1	7	MP-100-1	KNOB, INSTRUMENT, PUSH-ON TYPE	
1	6	LS-101	SPEAKER, P.M.	LS101
1	5	HA-102-2BN	HANDLE	
1	4	FU-100-250	FUSE, CARTRIDGE, 1/4 AMP 115VAC	FIO1
1	3	FE-104-2	HOLDER, FUSE	
4	2	CU-139-2B	FERRULE, HANDLE	
1	1	SEE CHART	AMPLIFIER, AUDIO FREQUENCY	AR101

TMC PART NO.	ITEM 1	ITEM 17	USED ON
A2588	AZ100	CA575-2	BSP-1
A2588-2	AZ104	CA575-5	BSP-1A
A2588-3	AZ100A	CA575-5	BSP-1B
A2588-4	AZ104A	CA575-5	BSP-1C

NOTE:

USE ITEM 4 OR 21 AS APPROPRIATE.

D	IT. 24, USED ON COLUMN IV A2588-1-4 ADDED	7/65	14118	SE	9/10/63	
C	IT. 4 WAS FU102-.375; DESC. UPDATED IT. 21 WAS FU102-.187; DESC. UPDATED	3.31.65	13767	SL	9/10/63	
B	ITEM 21 & 22 ADDED	9.25.64	12406	LSB	9/10/63	
A	TMC PART NO. CHART ADDED IT. 12 WAS RV4ATRD253B IT. 6 W. LS-101, IT. 17 W. CA575-2 IT. 1 WAS AZ-100, IT. 9 W. MS-3964 (LD-1172)	8.6.64	12037	LSB	9/10/63	
SYM	DESCRIPTION	DATE	CH. NO.	DRAFTS	CHECKER	ENG. APP.
UNLESS OTHERWISE SPECIFIED DIMENSIONS ARE IN INCHES AND INCLUDE CHEMICALLY APPLIED OR PLATED FINISHES		SCALE				
DECIMALS .X ± .05 .XX ± .01 .XXX ± .005	FRACTIONS ± 1/64 ANGLES ± 0° 30'	TOLERANCES				

REQ.	ITEM	PART NO.	DESCRIPTION	SYMBOL
THE TECHNICAL MATERIEL CORP. MAMARONECK. NEW YORK				
STOCK SIZE				
FINAL ASSEMBLY, BSP-1				
MATERIAL				
			WG. 1/22/63	BR
TYPE & TEMPER		HEAT TREAT. SPEC.	DRAWN	CHECKED
			16 1/23/63	
FINISH & SPEC. NO.			ELEC. DES. APP.	MECH. DES. APP.
			A-2588	D