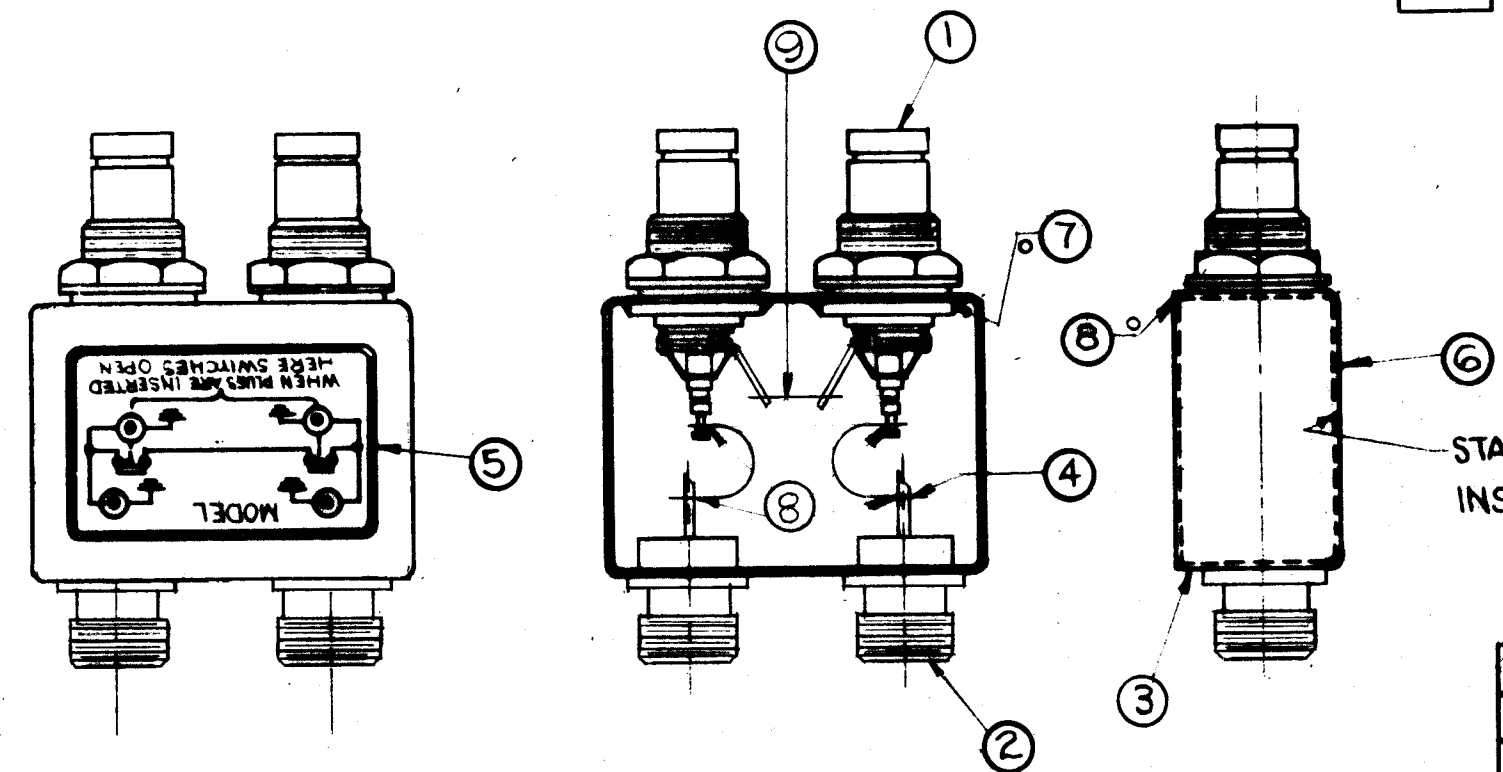


A-2460 B

REVISIONS

SYM	DESCRIPTION	DATE	E.M.N. NO.	DRAFT	CHKD	APP
A	ITEM (4) WAS MS-2983-4	4-10-63	8786			
B	ITEM 4 WAS MS2983-6	1-26-85		GDL		



1. INDUCTION HEATING EQUIPMENT SET AT:  
 AMPERES -  
 SECONDS -
  2. USE ITEM SEVEN (7) FOR MOUNTING ITEMS ONE (1) AND TWO (2).
  3. USE ITEM EIGHT (8) FOR SEALING COVER ITEM THREE (3).
  4. STRAP (ITEM 4) MUST BE KEPT AS FLEXIBLE AS POSSIBLE. DO NOT ALLOW SOLDER TO RUN OVER STRAP. LAY STRAP IN SO THAT IT CANNOT TOUCH CAN OR CONNECTOR BODIES.
  5. FINISH AS FOLLOWS:  
 S-114 - ZINC CHROMATE PRIMER  
 S-115 - TMC SMOOTH GREY ENAMEL  
 (DO NOT PAINT CONNECTOR BODIES.)
  6. AFFIX ITEM FIVE (5) TO FRONT AS SHOWN.
  7. AFFIX ITEM SIX (6) TO REAR AS SHOWN.
- 0 - DENOTES SOLDER ALL AROUND

REQ'D.	ITEM	PART NUMBER	DESCRIPTION	SYMBOL
1"	9	WL-100-5	WIRE, BUSS-BAR #18	
X	8	BS-106-2	SOLDER, SOFT 361°	
X	7	BS-106-4	SOLDER, SOFT 450°	
1	6	NP-488	NAMEPLATE IDENTIFICATION (FOIL CAL.)	
1	5	NP-490-2	SCHEMATIC, DIAGRAM (FOIL CAL.)	
2	4	WL 103-2	BRAID, WIRE FLAT	
1	3	BX-200-2	CASE, COVER	
2	2	JJ-254	ADAPTOR CONNECTOR	
2	1	JJ-239	ADAPTOR, CONNECTOR	

LIST OF MATERIAL

MATERIAL	SEE LIST	THE TECHNICAL MATERIEL CORP. MAMARONECK, NEW YORK	
FINISH	SEE NOTE NO.5	TITLE SW-309 ASSEMBLY	
UNLESS OTHERWISE SPECIFIED DIMENSIONS ARE IN INCHES AND INCLUDE CHEMICALLY APPLIED OR PLATED FINISHES		DRAWN A. Turchin	DATE 6-14-62
DECIMALS .X ± .05 .XX ± .01 .XXX ± .005		CHECKED HLL	DATE
TOLERANCES ± 1/64 ANGLES ± 0° 30'		ELECT. DES. GDL	DATE
		MECH. DES. GDL	DATE 6/27/62
		FINAL APPROVAL <i>[Signature]</i> A-2460 B	
		SHEET	
		REV.	

1	SW-309	A-2460
Q'TY./UNIT	MODEL USED ON	ASS'Y. NO.
SCALE DO NOT SCALE	CODE	
THE CONTENTS OF THIS DRAWING ARE THE EXCLUSIVE PROPERTY OF THE TECHNICAL MATERIEL CORP. ITS UNAUTHORIZED USE OR REPRODUCTION IN WHOLE OR IN PART IS STRICTLY FORBIDDEN.		

NOTES