

**NOTICE TO PERSONS RECEIVING THIS DRAWING**  
 THE TECHNICAL MATERIEL CORPORATION claims proprietary right in the material disclosed herein. This drawing is issued in confidence for engineering information only and may not be reproduced or used to manufacture anything shown hereon without permission from THE TECHNICAL MATERIEL CORPORATION to the user. This drawing is loaned for mutual assistance and is subject to recall at any time.  
 Property of:  
 THE TECHNICAL MATERIEL CORPORATION  
 MAMARONECK, NEW YORK

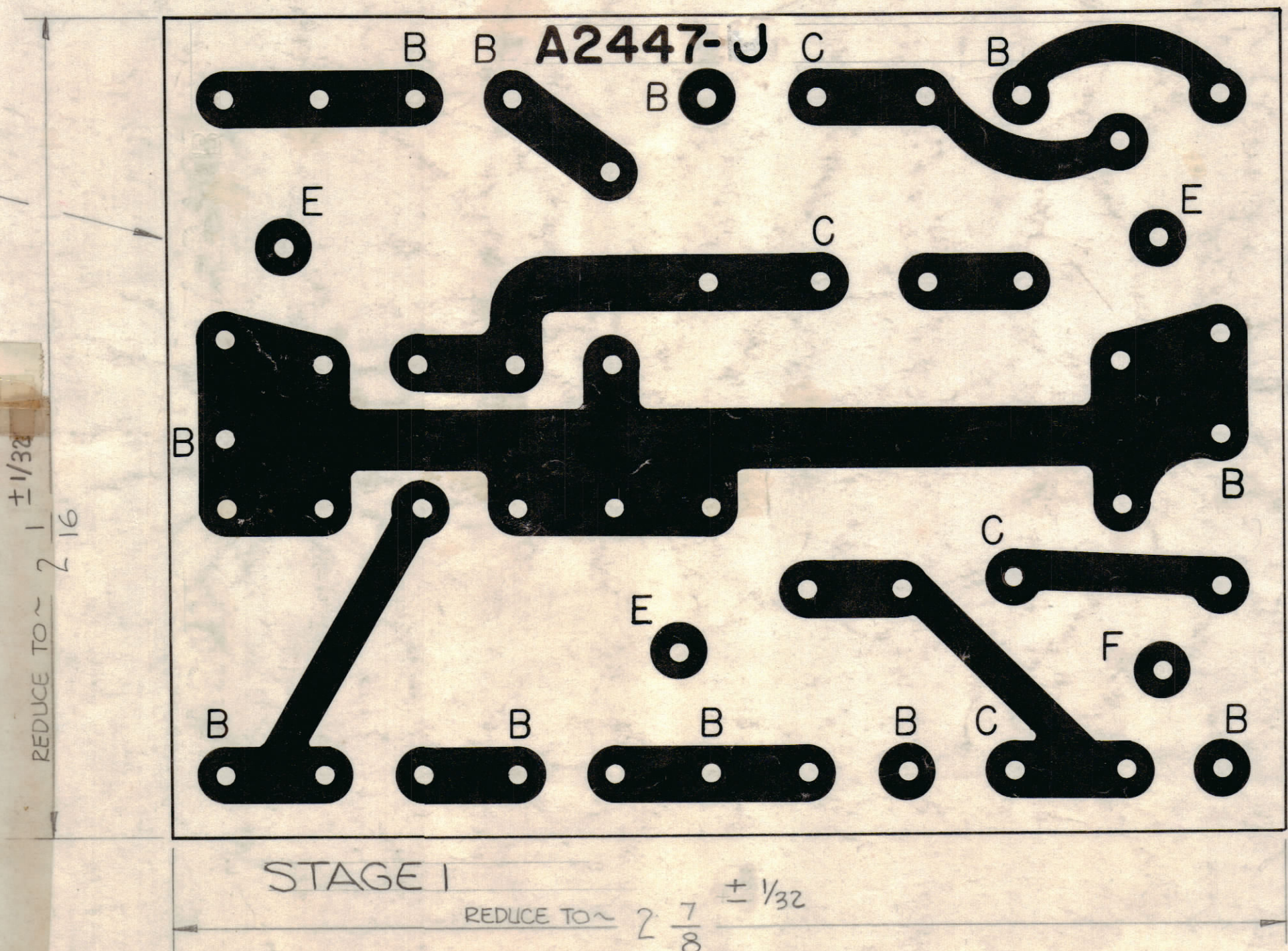
**- LEGEND -**

- A ~ ALL HOLES WITHOUT LETTER DESIGNATION TO BE .052 DIA. 31 REQ
- B ~ .078 DIA. 11 REQ
- C ~ .073 DIA. 4 REQ
- D
- E ~ .189 DIA. 3 REQ
- F ~ .312 DIA. 1 REQ

SCALE - 3 to 1

- MFG NOTES: (IMPORTANT)**
- 1) DO NOT PRINT LETTER DESIGNATIONS AS SHOWN ON CIRCUIT. (DENOTES HOLE SIZES)
  - 2) COPPER FOIL: TWO OUNCES, ON SIDE AS SHOWN.
  - 3) PLATING (MIN THICKNESS).0005 TIN LEAD ON CONDUCTORS.
  - 4) MOUNT ITEM ① (SHEET 2) IN ALL UNDESIGNATED HOLES WITH FLANGE ON CONTOUR OR SIDE.
  - 5) MOUNT ITEM ② (SHEET 2) IN ALL "B" HOLES AS SHOWN IN (STAGE 3) SHEET 2.
  - 6) MOUNT ITEM 2 IN ALL "E" HOLES AS SHOWN IN STAGE 3.
  - 7) SOLDER ITEM 1 (SHEET 2) TO RESPECTIVE PADS.

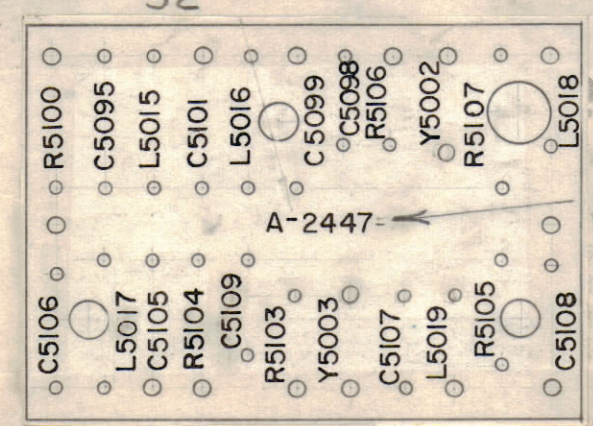
STAMP TMC PART NO. AS SHOWN ABOVE W/LATEST REV. LETTER



STAGE 1  
 REDUCE TO ~ 2 7/8 ± 1/32

A2447-1 A2447-  
 VENDOR TO LEAVE BLANK VENDOR TO INSERT REVISION LETTER

ALL LETTERING TO BE 3/32 HIGH CENTERED ON COMPONENT MTG. HOLES, WHERE POSSIBLE.



STAGE 2

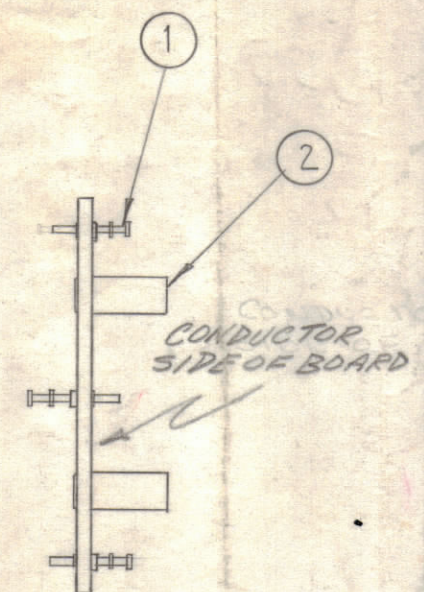
J	-	SEE SHEET 2 OF 2	5-21-69	19465	GE	OP	NO
H	-	STAGE 2 TRANSFERED FROM SHEET 2	1-4-68	18698	WV	OP	NO
G	-	SEE SHEET 2 OF 2	12-20-66	17548	WV	OP	NO
F	-	ON MTG NOTES, NOTE 4 DELETED ON NOTE 7 ITEM 18 DELETED-SEE SH 2 OF 2	10-11-66	17021	GDL	OP	NO
E	-	MODEL NUMBERS ADDED (SEE SH 2)	11-5-66	15437	H.V.	OP	NO
D	-	SEE SHEET 2 OF 2	11-29-65	CC	H.V.	OP	NO
C	-	SEE SHEET 2 OF 2 REV. "C"	1-5-64	13217	H.V.	OP	NO
B	CD	ON NOTE 3, WORD "PLATING" WAS "PLANTING"	2-4-63	9196	H.V.	OP	NO
A	-	SEE SHEET 2 OF 2 REVISION "A"	1-15-63	8025	H.V.	OP	NO

SYM	ZONE	DESCRIPTION	DATE	CH. NO.	DRAFTS	CHECKER	ENG. APP.
UNLESS OTHERWISE SPECIFIED:			SCALE				
DIMENSIONS ARE IN INCHES			MAXIMUM ALLOWABLE TOLERANCES HAVE BEEN DETERMINED AND ANY DEVIATIONS WILL BE CAUSE FOR REJECTION. REMOVE ALL BURRS & SHARP EDGES				
TOLERANCES ON FRACTIONS ± 1/64			DECIMALS ± .005		ANGLES ± 1/2°		

1	AFC-7				
1	AFC-8				
1	AFC-2A				
1	AFC-3			4-17-62	
REQ. PER UNIT	MODEL	SECTION	ASS'Y. NO.	DATE	USED ON

REQ.	ITEM	PART NO.	DESCRIPTION	SYMBOL
		1.06Z	THE TECHNICAL MATERIEL CORP. MAMARONECK, NEW YORK	
		EPOXY	PRINTED, ELECTRICAL CIRCUIT	
		G10	HF OSC.	
			RUZZE	BP
			DRAWN	CHECKED
			FINAL APPROVAL	
			A-2447 J	
			SHEET 1 OF 2	

A2447-3

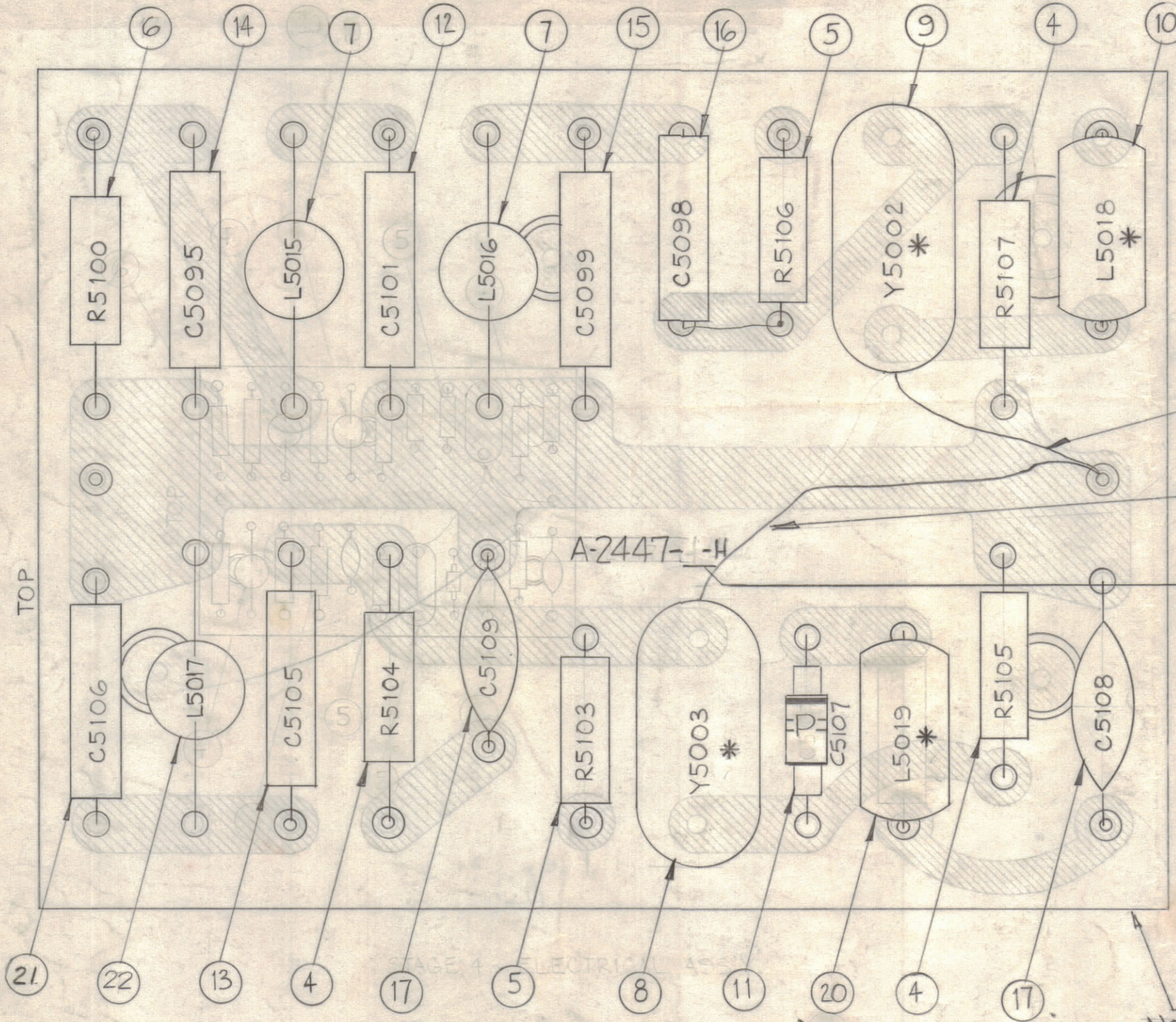


STAGE 3 - SUB-ASS'Y.  
REF: SHEET 1 FOR  
LOCATION OF  
ITEMS 1, 2 & 18.

REVISIONS							
ZONE	SYM	DESCRIPTION	DATE	E.M.N. NO.	DRAFT	CHKD	APPD
C2	A	ITEM (11) WAS CX-106-2	1-15-62	8025			
F3	B	NOTE ADDED	6-4-63	9196			
-	C	IT. (2) P/N WAS "TE 196 B1184"	1-5-65	13217			
F2	D	CLERICAL CHANGE	1-24-65	15433			
-	E	TMC CHT. B/M CHT. REVISED MODEL Nos. APP'D	1-24-65	15433			
-	F	ITEM 18 DELETED (EY106-4GB) ASS'Y PROCEDURE NOTE 1 & 2 CLARIFIED, SEE SHEET 1 OF 2	10-11-66	17021			
-	G	B/M UPDATED; PT/No. CHART UPDATED	12-20-66	17548			
-	H	STAGE 2 TRANSFERRED TO SHEET 1	1-4-68	18698			
-	J	REVISED & UPDATED	5-27-69	19465			

TMC P/N	MODEL	ITEM 8*	REQ	ITEM 10*	REQ	ITEM 20*	REQ	FREQ	ITEM 13	REQ	ITEM 21	REQ	ITEM 22	REQ
A-2447-4	AFC-3	CR-109-5	1	CL-270-22	1	CL-270-15	1	2 MC	CM15C220J03	1	CM15C820J03	1	CL275-151	1
A-2447-5	AFC-2A AFC-7	CR-109-4	1	CL-270-18	1	CL-270-18	1	705 KC	CM15C220J03	1	CM15C820J03	1	CL275-151	1
A-2447-6	AFC-8	CR-109-85	1	CL-270-18	1	CL-270-18	1	350 KC	CM15C220J03	1	CM15C510J03	1	CL275-100	1

NOTE: ITEMS MARKED WITH ASTERISK (\*) ARE FACTORY SELECTED FOR EACH UNIT. VALUES AND PART NUMBERS INDICATED ARE TYPICAL ONLY.

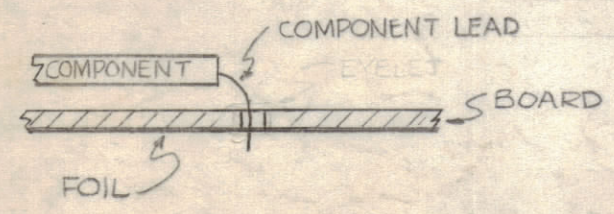


3 SOLDER ITEM 3 TO CASE OF ITEMS 8 & 9.

STAMP 4-5 OR 6 AS APPLICABLE WHEN ASSY IS COMPLETE (SEE CHART)

A2447-X  
SEE CHART

NOTE: FOR PRINTED CIRCUIT DIAGRAM SEE SHEET 1 OF A-2447



STAGE 4 - ELECTRICAL ASS'Y. ASSEMBLY PROCEDURE

- 1) TO MOUNT COMPONENTS - INSERT LEAD THROUGH HOLE & BEND ABOUT 1/16" OF LEAD OVER COPPER FOIL AS SHOWN.
- 2) APPLY HEAT AND SOLDER LEAD TO FOIL. - CAUTION - TOO MUCH HEAT WILL CAUSE THE FOIL TO SEPARATE FROM THE BOARD.
- 3) DO NOT BEND CRYSTAL PINS - SOLDER THEM DIRECTLY TO FOIL.
- 4) CLEAN & INSPECT AS PER S-676.
- 5) CLEAN & INSPECT AS PER S-676.

NOTES

Q'TY./UNIT	MODEL USED ON	ASS'Y. NO.
1	AFC-8	
	AFC-7	
	AFC-2A	
	AFC-3	

THE CONTENTS OF THIS DRAWING ARE THE EXCLUSIVE PROPERTY OF THE TECHNICAL MATERIEL CORP. ITS UNAUTHORIZED USE OR REPRODUCTION IN WHOLE OR IN PART IS STRICTLY FORBIDDEN.

REQ'D.	ITEM	PART NUMBER	DESCRIPTION	SYMBOL
1	22	SEE CHART	COIL, RF	L5017
1	21	SEE CHART	CAP. FIXED, MICA	C5106
1	20	SEE CHART *	COIL, R.F. MOLDED	L5019
X	19	BS-100	SOLDER, SOFT	
	18	DELETED	EYELETS, #	
2	17	CM112F202655	CAPACITOR, FIXED MICA	C5108 C5109
1	16	CM15C390303		C5098
1	15	CM15F131J03		C5099
1	14	CM15B100K03		C5095
1	13	SEE CHART		C5105
1	12	CM15C820J03	CAPACITOR, FIXED MICA	C5101, 06
1	11	CX-106-11	CAPACITOR, VOLTAGE VARIABLE	C5107
1	10	SEE CHART *	COIL, R.F. MOLDED	L5018
1	9	CR-109-3 *	CRYSTAL UNIT, QUARTZ	Y5002
X	8	SEE CHART *	CRYSTAL UNIT, QUARTZ	Y5003
2	7	CL-275-151	COIL, R.F.	L5015, 16
1	6	RC20GF472J	RESISTOR, FIXED CARBON	R5100
2	5	RC20GF470J	RESISTOR, FIXED CARBON	R5103, 06
3	4	RC20GF104J	RESISTOR, FIXED CARBON	R5104, 05 07
X	3	WL-100-7	WIRE, BUSS # 22	
3	2	TE 164-16	STAND-OFF, RIVET TYPE	
11	1	TE-168-4-B	TERMINAL, MINIATURE	

W. WESCHLER LIST OF MATERIAL

MATERIAL: THE TECHNICAL MATERIEL CORP. MAMARONECK, NEW YORK

FINISH: TITLE PRINTED, ELECTRICAL CIRCUIT & COMPONENT ASSY. H.F. OSC.

UNLESS OTHERWISE SPECIFIED DIMENSIONS ARE IN INCHES AND INCLUDE CHEMICALLY APPLIED OR PLATED FINISHES

DECIMALS: .X ± .05, .XX ± .01, .XXX ± .005  
FRACTIONS: 1/64, ANGLES ± 0° 30'

DRAWN: WAF, DATE: 5-22-62  
CHECKED: HOC, DATE: 6/7/62  
ELECT. DES.: WAF, DATE: 6/7/62  
MECH. DES.: WAF, DATE: 6/7/62

FINAL APPROVAL: OP, DATE: 6/7/62

REV. LTR.: J

SHEET 2 OF 2