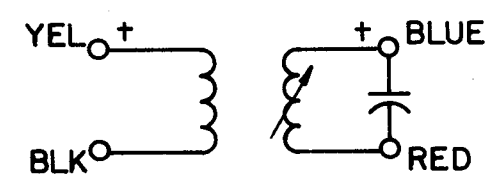


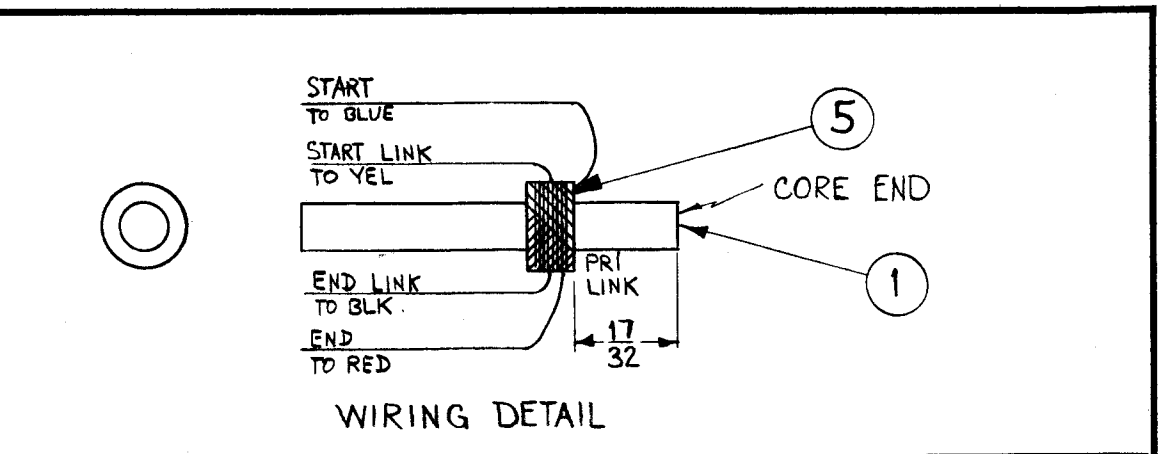
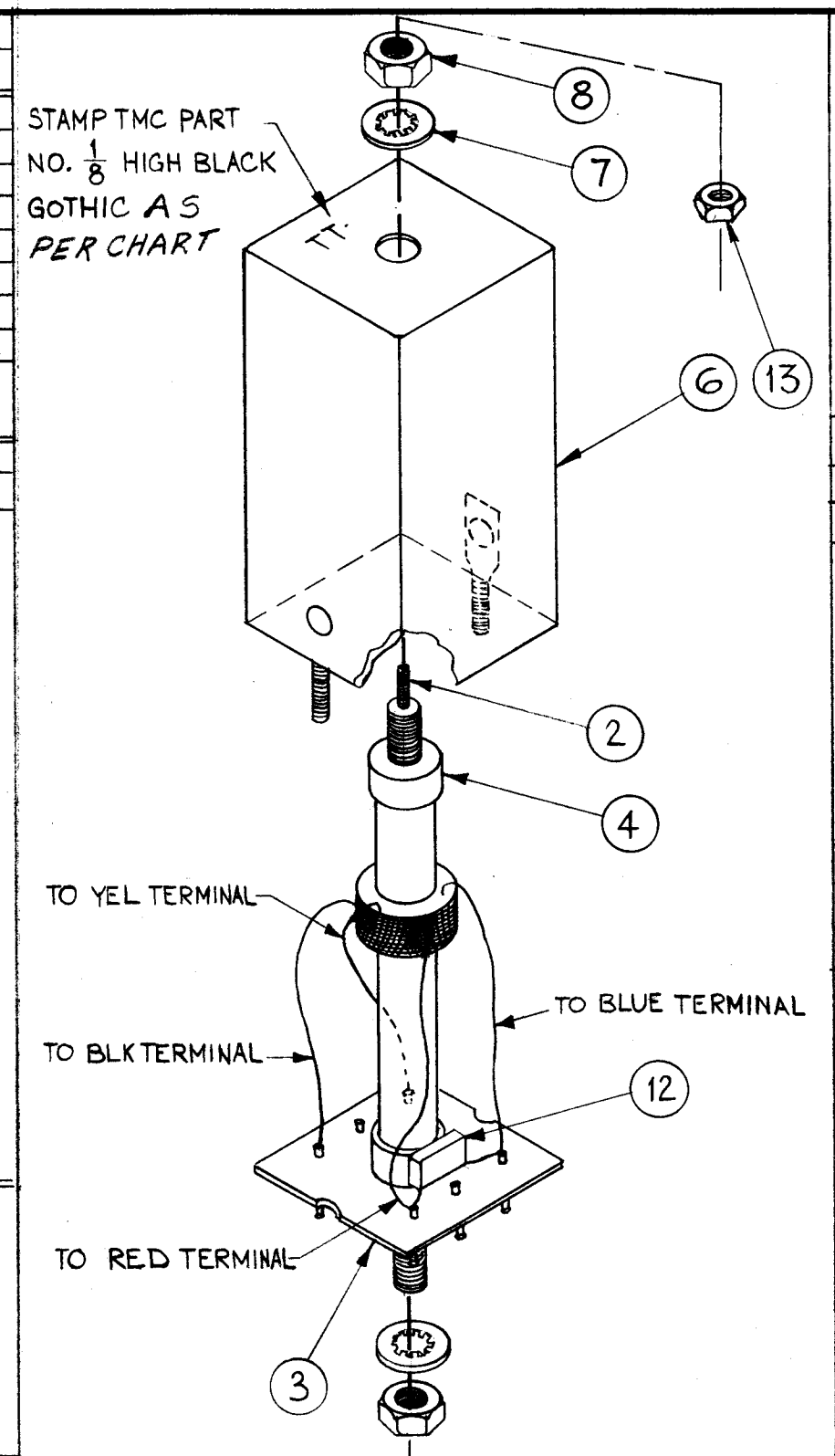
COIL DATA		
SPECIFICATIONS	PRIMARY	LINK
CAM	.250	.250
CAM GEAR	105	105
CAM DRIVER	69	69
IND (uh)	380+400	-
Q	40 OR GREATER	-
COIL RES Ω	15	-
FREQ (KC)	790	-
COND (PF)	SEE CHART	-

WINDING INSTRUCTIONS		
URNS	250	17
WIRE	# 38 DSC	#38 DSC

- WINDING DATA**
1. Wind primary first, 250 turns (item 5) starting 17/32 from end. Stake ends with item 9.
 2. Wind link over primary, 17 turns.
 3. Color code coil base as shown.
 4. Strip & tin leads. Solder them to proper color-coded terminals on base.
 5. Measure Q, IND, RES, w/o core.
 6. Bake for 15 min. at 220°F. saturate coils with item 10.
 7. Solder component leads to terminals.
 8. Apply all leads with GL-102 (item 10).
 9. Assemble as per assembly drawing, place in can.



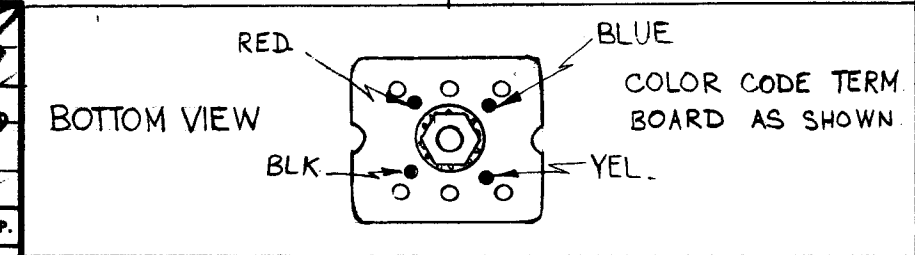
SCHEMATIC DIAGRAM
+ INDICATES START OF WINDING.



TMC P/N	TMC ASSY.#	OPER. FREQ.	ITEM #12	VALUE
TT161	A2157	250 KC	CM111F601J3S	600 PF
TT161-2	A2157-2	205 KC	CM111F102F5S	1000 PF

1	13	NTH0348BN6	NUT, HEX
1	12	SEE CHART	
X	11	BS-100	SOLDER, SOFT
X	10	GL-102	Q-DOPE
X	9	GL-103	DUCO
2	8	NTH0832BN8	HEX, NUT
2	7	LWI08MRN	LOCKWASHER, INTERNAL
1	6	A-3029-1	CAN ASS'Y
X	5	WI-107-19	MAGNET WIRE #38
2	4	SM-140-2	BUSHING, COIL MTG
1	3	PX-610-1	TERM. BOARD TRANSF 6 LUGS
1	2	CI-116-6	CORE, TUNING
1	1	CF-122-1.93	COIL FORM .250 O.D.

SYM	DESCRIPTION	DATE	CH. NO.	DRAFTS	CHECKER	ENG. APP.
E	COIL DATA "Q" WAS 35-45	10.19.66	17058	LHD		
D	TMC P/N CHT ADDED	11/3/65	15089	R.V.V.		
C	TO IT.3 & IT.6 P/N (-1) ADDED	8.27.64	12249	LSB		
B	ON COIL DATA ADD. LINK COLUMN	3-11-64	11028	AM		
A	ADDED ITEM 13 TO PICT. & CHART	1/13/63	10412	HD		



UNLESS OTHERWISE SPECIFIED:
DIMENSIONS ARE IN INCHES
TOLERANCES ON FRACTIONS $\pm 1/64$ DECIMALS $\pm .005$ ANGLES $\pm 1/2^\circ$

SCALE:
MAXIMUM ALLOWABLE TOLERANCES HAVE BEEN DETERMINED AND ANY DEVIATIONS WILL BE CAUSE FOR REJECTION.
REMOVE ALL BURRS AND SHARP EDGES

REQ. PER UNIT	MODEL	SECTION	ASS'Y. NO.	DATE
1	SBS-7			

REQ. ITEM	PART NO.	M. GELLMAN	DESCRIPTION	SYMBOL
THE TECHNICAL MATERIEL CORP. MAMARONECK, NEW YORK				
TT-161 TRANSFORMER ASS'Y. (TRANSF. IF TUNED).				
TYPE & TEMPER		HEAT TREAT. SPEC.	DRAWN	CHECKER
FINISH & SPEC. NO.		ELEC. DES. APP.	MECH. DES. APP.	