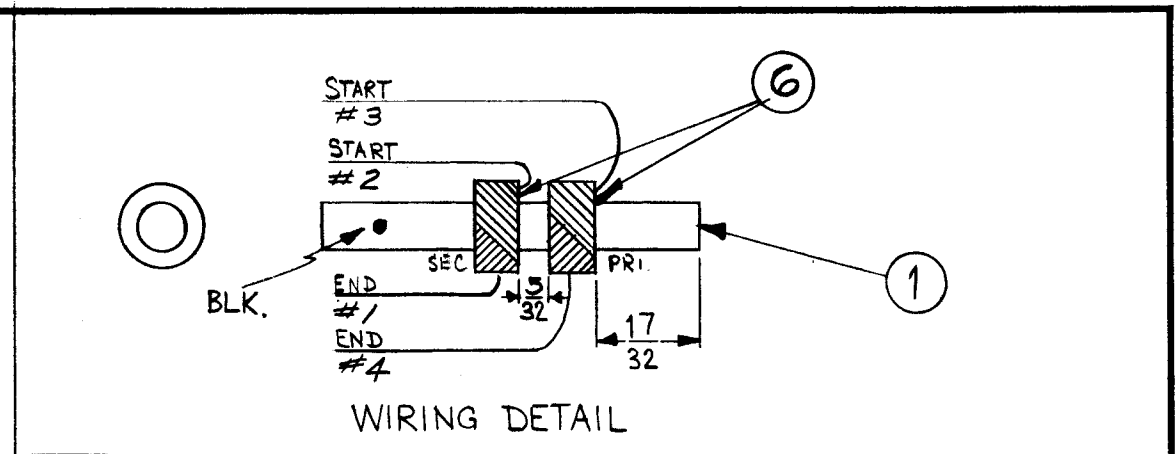
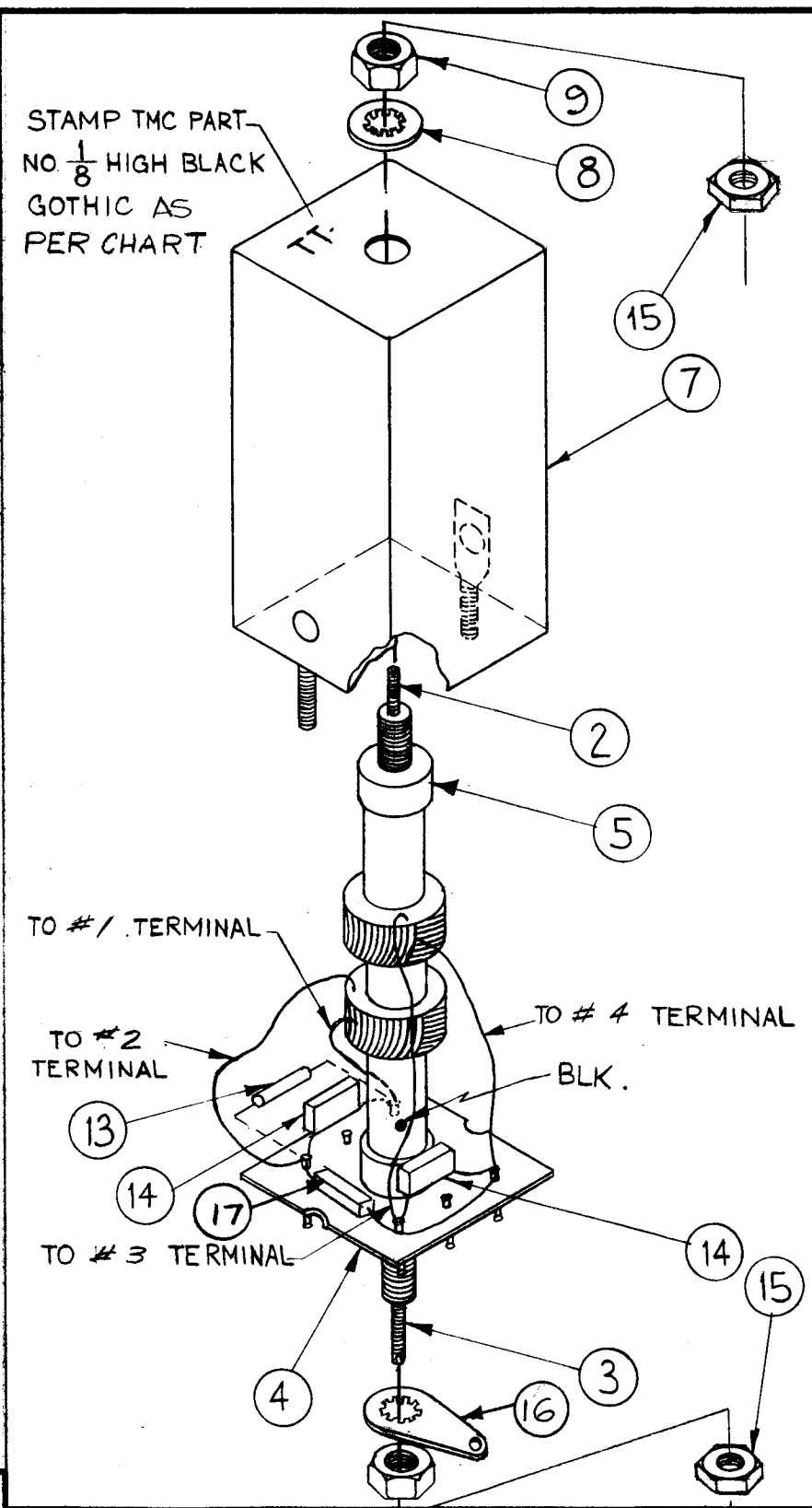
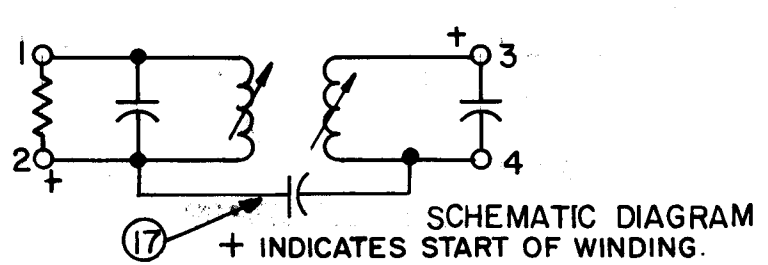


D	COIL DATA		
	SPECIFICATIONS	PRIMARY	SECONDARY
A-2156	CAM	.250	.250
	CAM GEAR	105	105
	CAM DRIVER	69	69
	IND (uh)	220-240	220-240
	Q	40 OR GREATER	40 OR GREATER
	COIL RES. $\Omega$	10.5	10.5
	FREQ. (kc)	790	790
	COND. (PF)	SEE CHART	SEE CHART
	RES. EXT $\Omega$		15000

WINDING INSTRUCTIONS		
TURNS	200	200
WIRE	#38 DSC	#38 DSC

- WINDING DATA**
1. Wind primary first, 200 turns (item 6) starting 17/32 from end. Stake ends with item 10.
  2. Wind secondary 5/32 from end of primary. 200 turns (item 6). Stake ends with item 10.
  3. Color code coil base as shown.
  4. Strip & tin leads. Solder them to proper color-coded terminals on base.
  5. Measure Q, IND, RES. w/o core.
  6. Bake for 15 min. at 220°F. Saturate coils with item 11.
  7. Solder component leads to terminals.
  8. Apply all leads with GL-102 (item 11).
  9. Assemble as per assembly drawing, place in can.



TMC PART No	TMC ASSY No	ITEM 14	ITEM 17	COLOR CODE			
				1	2	3	4
TT160	A2156	CM111F102F5S	NONE	GRN.	BLK.	RED	BLUE
TT160-2	A2156-2	CM112F202G5S	CM15C270J03	BLK.	GRN.	RED	BLUE

1	17	SEE CHART	CAP., FXD, MICA	
1	16	TE104-3	TERM., LUG-LKG	
2	15	NTH0818BN8	NUT, HEX.	
2	14	SEE CHART	CAPACITOR, FIXED, MICA.	
1	13	RC20GF153J	RESISTOR, FIXED, COMP.	
X	12	BS-100	SOLDER, SOFT	
X	11	GL-102	Q-DOPE	
X	10	GL-103	DUCO	
2	9	NTH0832BN8	HEX, NUT	
1	8	LWI08MRN	LOCKWASHER, INTERNAL	
1	7	A-3029-1	CAN ASS'Y	
X	6	WI-107-19	MAGNET WIRE # 38	
2	5	SM-140-2	BUSHING, COIL MTG	
1	4	PX-610-1	TERMINAL BOARD, TRANSFORMER, 6 LUGS	
1	3	CI-116-17	CORE, TUNING	
1	2	CI-116-6	CORE, TUNING	
1	1	CF-122-1.93	COIL FORM .250 O.D.	

REQ. ITEM	PART NO.	M. GELLMAN	DESCRIPTION	SYMBOL
THE TECHNICAL MATERIEL CORP. MAMARONECK, NEW YORK				
TT-160 TRANSFORMER ASS'Y. (TRANSF. IF TUNED).				
TYPE & TEMPER		HEAT TREAT. SPEC.	DRAWN	CHECKER
FINISH & SPEC. NO.		ELEC. DES. APP.	MECH. DES. APP.	

SYM	DESCRIPTION	DATE	CH. NO.	DRAFTS	CHECKER	ENG. APP.
D	COIL DATA "Q" WAS 35-45	9/19/66	17058	WFO		
C	SCHE REVISED TMC CHE IT 16/17 ADDED	11/3/65	15089	AVV		
B	IT. 4 WAS PX-610-4 LUGS, TO IT. 7 PM (-) AM	8.27.64	12249	JB		
A	ADDED ITEM 15 TO DWG	11-12-63	10412	JO		

UNLESS OTHERWISE SPECIFIED:  
DIMENSIONS ARE IN INCHES  
TOLERANCES ON FRACTIONS  $\pm 1/64$  DECIMALS  $\pm .005$  ANGLES  $\pm 1/20^\circ$

SCALE:  
MAXIMUM ALLOWABLE TOLERANCES HAVE BEEN DETERMINED AND ANY DEVIATIONS WILL BE CAUSE FOR REJECTION.  
REMOVE ALL BURRS AND SHARP EDGES

REQ. PER UNIT	MODEL	SECTION	ASS'Y. NO.	DATE
1	HFI-1			9-20-61
1	SBS-1,7			9-20-61

USED ON