

A-2151

COIL DATA

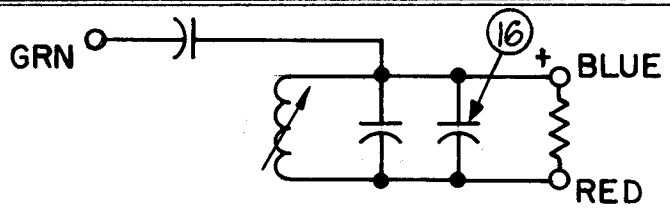
SPECIFICATIONS	PRIMARY
CAM	.250
CAM GEAR	105
CAM DRIVER	69
IND (uh)	95-105
Q	40 OR GREATER
COIL RES. Ω	7
FREQ. (kc)	790
COND. (PF)	SEE CHART
RES. EXT.	10K

WINDING INSTRUCTIONS

TURNS	135
WIRE	# 38 DSC

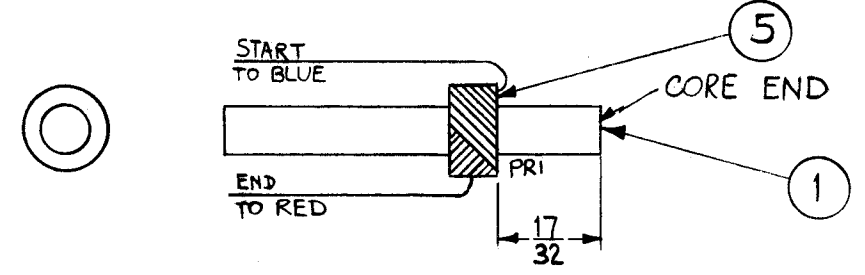
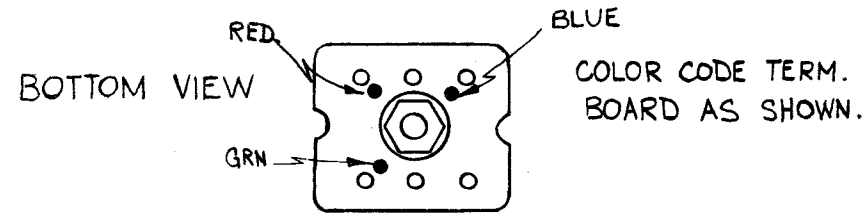
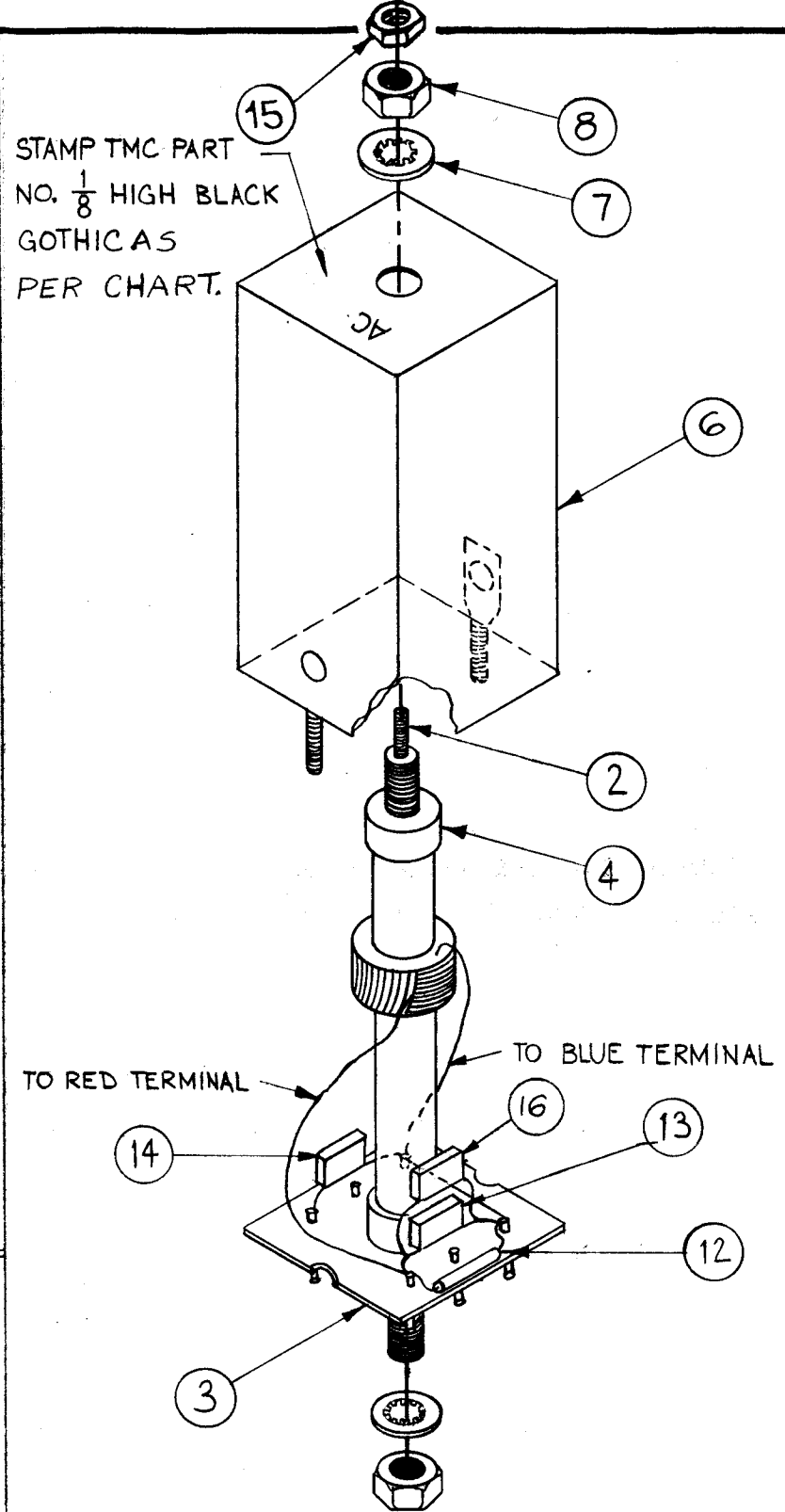
WINDING DATA

1. Wind primary first 135 TURNS (ITEM 5) starting 17/32 from end. Stake ends with item 9.
2. Color code coil base as shown.
3. Strip & tin leads. Solder them to proper color-coded terminals on base.
4. Measure Q, IND, res w/o core.
5. Bake for 15 min at 220 F. Saturate coils with item 10.
6. Solder component leads to terminals.
7. Apply all leads with GL-102 (item 10).
8. Assemble as per assembly drawing, place in can.



SCHEMATIC DIAGRAM + INDICATES START OF WINDING

STAMP TMC PART NO. 1/8 HIGH BLACK GOTHIC AS PER CHART.



WIRING DETAIL

TMC ASS'Y NO.	TMC PART NO.	ITEM 13	ITEM 16
A2151	AC137	CM111F102F5S	CM111F102F5S
A2151-2	AC137-2	CM112F392G3S	NONE

1	16	SEE CHART	CAP., FXD, MICA
1	15	NTH0348BN8	NUT, HEX
1	14	CM111F102F5S	CAPACITOR, FIXED, MICA
1	13	SEE CHART	CAPACITOR, FIXED, MICA
1	12	RC20GF103J	RESISTOR, FIXED COMP.
X	11	BS-100	SOLDER, SOFT
X	10	GL-102	Q-DOPE
X	9	GL-103	DUCO
2	8	NTH0832BN8	HEX, NUT
2	7	LWI08MRN	LOCKWASHER, INTERNAL
1	6	A-3029-1	CAN ASS'Y
X	5	WI-107-19	MAGNET WIRE # 38
2	4	SM-140-2	BUSHING, COIL MTG
1	3	PX-610-1	TERMINAL BOARD, TRANSF. 6 LUGS
1	2	CI-116-6	CORE, TUNING
1	1	CF-122-1.93	COIL FORM .250 O.D.

REQ. ITEM	PART NO.	M. GELLMAN	DESCRIPTION	SYMBOL
		THE TECHNICAL MATERIEL CORP. MAMARONECK, NEW YORK		
		AC-137 COIL ASS'Y. (COIL IF TUNED).		
		M.A.G. BP		
		DRAWN		FINAL APPROVAL
		ELEC. DES. APP.		MECH. DES. APP.
		A-2151		E

SYM	DESCRIPTION	DATE	CH. NO.	DRAFTS	CHECKER	ENG. APP.
E	CHAD "K" RES TO "D". ADD -1 TO IT 3 P/N	11-21-66	17292	RME		
D	COIL DATA "Q" WAS 35-45	10-19-66	17058	WAD		
C	IT 16 TMC P/N CHG. ADDED. IT 13 WAS CM111F102H/5. IT 14 WAS CM111F102H/5.	11/4/65	15089	R.V.L.		
B	ITEM (14) WAS CM111F102H/5. ITEM (6) WAS A-3029	12/3/63	10589			
A	ITEM 15 ADDED TO DWG.	11-12-63	10412	H.B.		

UNLESS OTHERWISE SPECIFIED:  
DIMENSIONS ARE IN INCHES  
TOLERANCES ON FRACTIONS ± 1/64 DECIMALS ± .005 ANGLES ± 1/2°

SCALE:  
MAXIMUM ALLOWABLE TOLERANCES HAVE BEEN DETERMINED AND ANY DEVIATIONS WILL BE CAUSE FOR REJECTION.  
REMOVE ALL BURRS AND SHARP EDGES

REQ. PER UNIT	MODEL	SECTION	ASS'Y. NO.	DATE
1	HFI-1			9-21-61
1	SBS-1			9-21-61
USED ON				