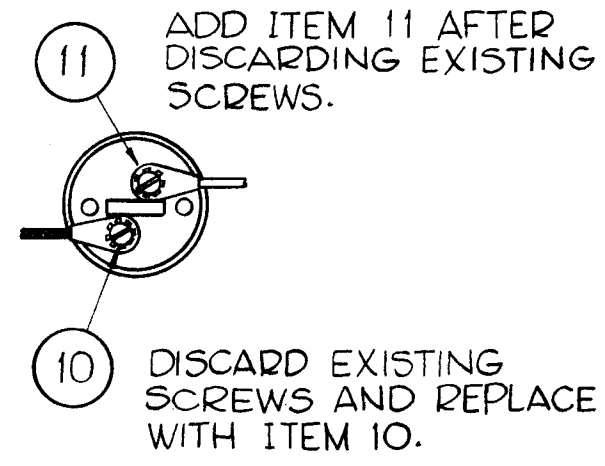
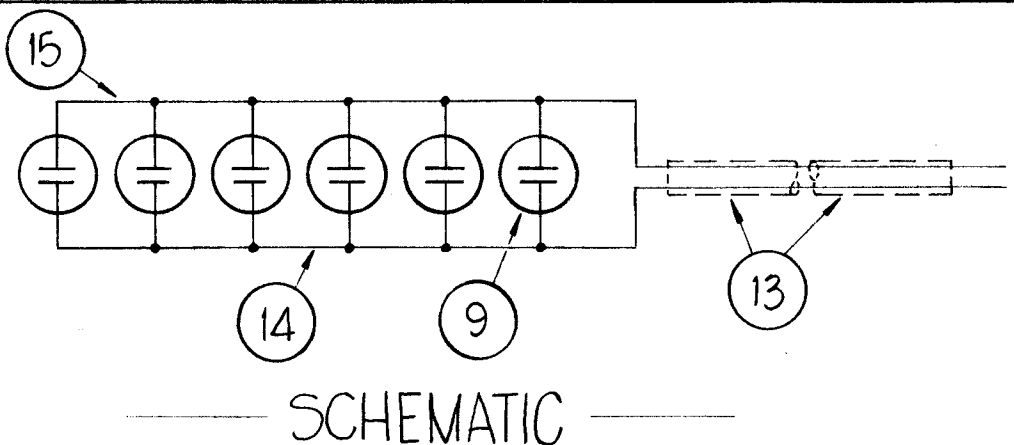
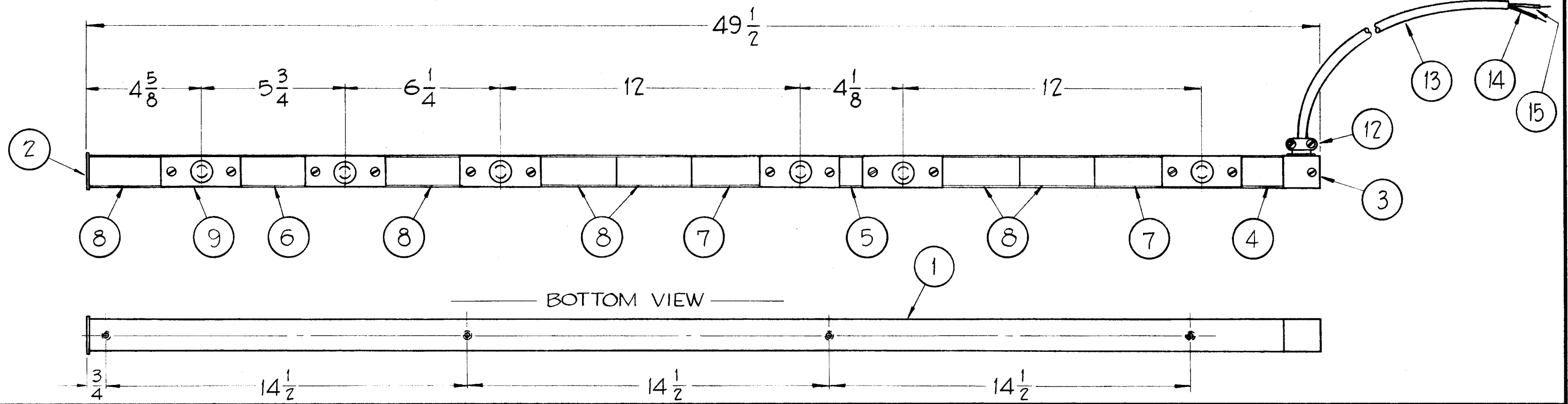


A-2103



X	16	BS-100	SOLDER, SOFT	
67"	15	MWC14(19)U9	CABLE, INSULATED	WHITE
67"	14	MWC14(19)U0	CABLE, INSULATED	BLACK
18"	13	PX-100-1-.234	SLEEVING, INSULATION	BLACK
1	12	CU-113	CLAMP, CABLE	
12	11	TE-112-2	LUG, TERMINAL	
12	10	SCBS0540BN3	SCREW, MACHINE	
6	9	JJ-170	RECEPTACLE, TWIST LOCK, AC	
6	8	PO-163-3.00	COVER, CONNECTOR STRIP	
2	7	PO-163-2.750		
1	6	PO-163-2.500		
1	5	PO-163-1.00		
1	4	PO-163-.750	COVER, CONNECTOR STRIP	
1	3	PO-162	END FITTING, CABLE ENTRY	
1	2	PO-161	END FITTING, BLANK	
1	1	PO-160	STRIP, CONNECTOR	

**NOTES**

1- ALL DIMENSIONS FOR REFERENCE ONLY.

2- WHEN ASSEMBLING ITEM 13 ON ITEMS 14 & 15 ALLOW LEADS (ITEMS 14 & 15) TO PROTRUDE 1".

SYM	DESCRIPTION	DATE	CH. NO.	DRAFTS	CHECKER	ENG. APP.
UNLESS OTHERWISE SPECIFIED:		SCALE: - Do Not Scale -				
DIMENSIONS ARE IN INCHES		MAXIMUM ALLOWABLE TOLERANCES HAVE BEEN DETERMINED AND ANY DEVIATIONS WILL BE CAUSE FOR REJECTION.				
TOLERANCES ON FRACTIONS ± 1/64		DECIMALS ± .005		ANGLES ± 1/2°		REMOVE ALL BURRS AND SHARP EDGES

2	SYM-1023	C & I		7-14-61
REQ. PER UNIT	MODEL	SECTION	ASS'Y. NO.	DATE
USED ON				

REQ. ITEM	PART NO.	DESCRIPTION	SYMBOL
THE TECHNICAL MATERIEL CORP. MAMARONECK, NEW YORK			
AX-269 ASSEMBLY (AC POWER STRIP)			
TYPE & TEMPER	HEAT TREAT. SPEC.	DRAWN	CHECKER
FINISH & SPEC. NO.		ELEC. DES. APP.	MECH. DES. APP.

John C. Biele *[Signature]* *[Signature]* *[Signature]*

A-2103