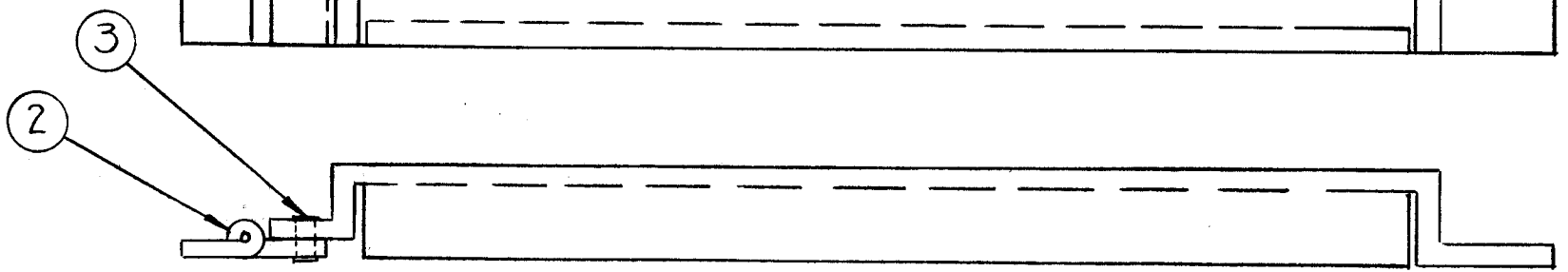
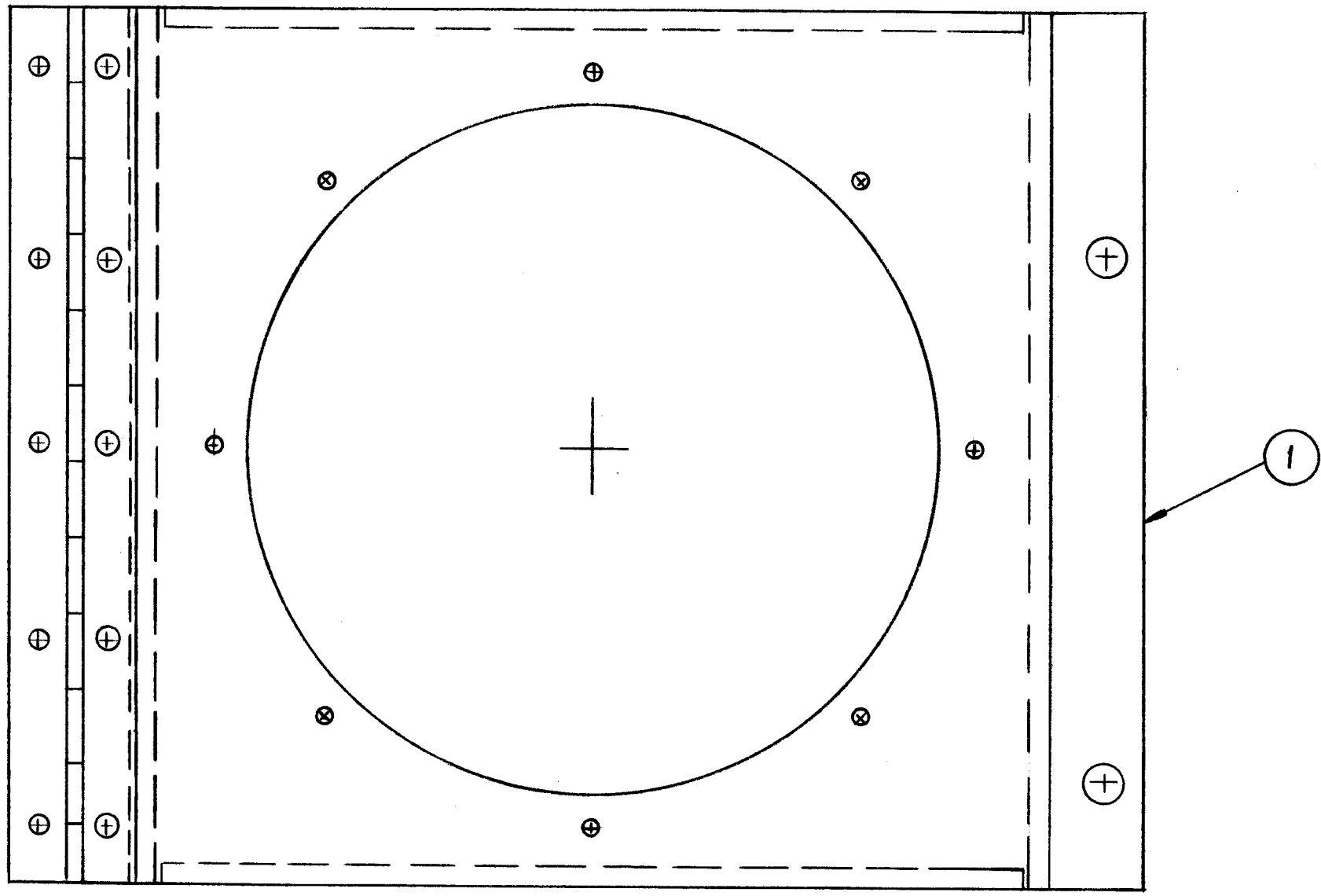


A-2090 A

NOTICE TO PERSONS RECEIVING THIS DRAWING

THE TECHNICAL MATERIEL CORPORATION claims proprietary right in its drawings and designs. This drawing is loaned to you for information only and is not to be used to manufacture any item without the express permission of T.M.C. The T.M.C. 002-003A-1101 is the name of the drawing for mutual assistance and is subject to recall at any time.

Property of:
THE TECHNICAL MATERIEL CORPORATION
 MAMARONECK, NEW YORK



(LD-553) →

5	3	EY-100-2	EYELET	
1	2	HI-106	HINGE	
1	1	MS-1614	FAN MOUNTING TOP	
REQ. ITEM	PART NO.		DESCRIPTION	SYMBOL
STOCK SIZE			THE TECHNICAL MATERIEL CORP. MAMARONECK, NEW YORK TOP FAN MOUNTING ASSY	
MATERIAL				
TYPE & TEMPER			HEAT TREAT. SPEC.	DRAWN
FINISH & SPEC. NO.			ELEC. DES. APP.	MECH. DES. APP.

ISSUE	ITEM	CHANGED FROM	DATE	CH. NO.	DRAFTS	CHECKER	ENG. APP.
A	1	HINGE RELOCATED BELOW LIP	4-26-61	4739	RU	JCB	QOB
TOLERANCES		SCALE:					
DEC. DIM. ±		MAXIMUM ALLOWABLE TOLERANCES HAVE BEEN DETERMINED AND ANY DEVIATIONS WILL BE CAUSE FOR REJECTION. REMOVE ALL BURRS AND SHARP EDGES					
FRAC. DIM ±							
ANGULAR DIM ±							

1	GPT-10K	AUX-FR.		4-12-61
REQ. PER UNIT	MODEL	PROJECT NO.	ASS'Y. NO.	DATE
USED ON				

A-2090 A