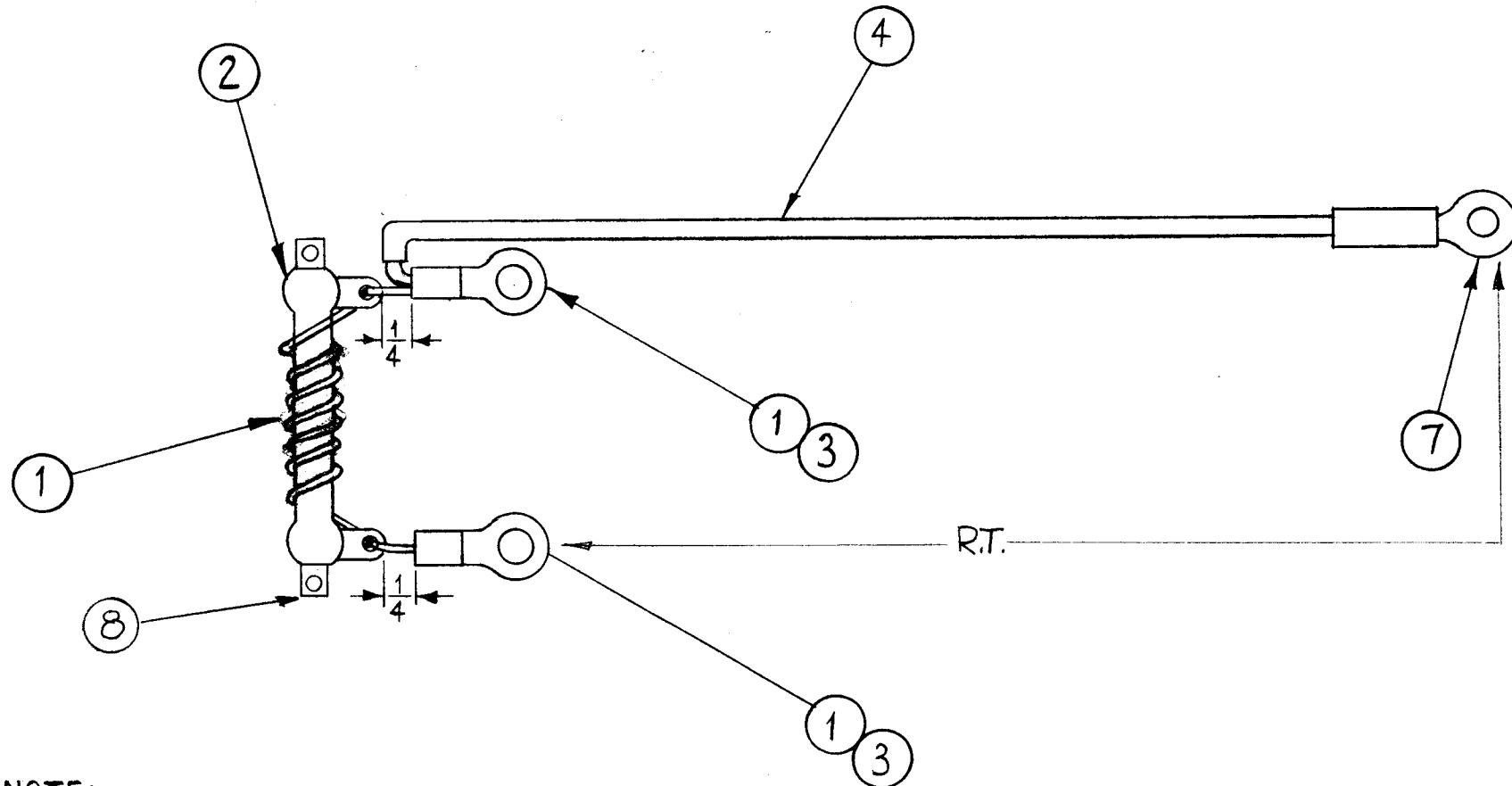


A-2033



NOTE:
 1) THIS UNIT USED WITH AR-243 TO PROVIDE SHUNT FOR 110V AND 220V OPERATION.

PROCEDURE

- 1- STRIP INSULATION FROM WIRE (ITEM 1) 1 INCH DOWN FROM EACH END.
- 2- SOLDER LUG (ITEM 3) TO ONE END OF WIRE (ITEM 1) AND PASS WIRE THROUGH TERMINAL OF RESISTOR (ITEM 2).
- 3- LEAVE 1/4" BETWEEN LUG & RESISTOR AND SOLDER WIRE (ITEM 1) TO RESISTOR TERMINAL.
- 4- WIND APPROXIMATELY 7 TURNS OF WIRE (ITEM 1) ON RESISTOR, EXTENDING BARE END THROUGH RESISTOR TERMINAL, APPROXIMATELY 1/2" AND SOLDER WIRE TO RESISTOR TERMINAL.
- 5- SOLDER WIRE (ITEM 1) AND INSULATED CABLE (ITEM 4) TO TO LUG (ITEM 3) AS SHOWN, LEAVING 1/4" BETWEEN LUG AND RESISTOR TERMINAL.
- 6- SOLDER LUG (ITEM 3) TO BARE END OF INSULATED CABLE (ITEM 4).
- 7- COAT UNIT, EXCEPT LUGS WITH INSULEX.
- 8- BAKE AT 270° F FOR 30 MINUTES.

SPECIFICATIONS

RT = NOT RATED
 MAX. CURRENT - 20A @ 115 VAC

| | | | | |
|--------|---|--------------|----------------------------|-------|
| 2 | 8 | CU 164-1 | RET., RES. | |
| 1 | 7 | TE-155-34170 | SOLDERLESS TERMINAL | |
| X | 6 | GL-104-2 | INSULEX, U85 | |
| X | 5 | BS-100 | SOLDER SOFT | |
| 5 1/2" | 4 | HWC-14(19)UO | CABLE, INSULATED. | BLACK |
| 2 | 3 | TE-141-3 | SOLDERLESS TERMINAL | |
| 1 | 2 | RW-109-28 | RESISTOR, FIXED, WIREWOUND | |
| 10" | 1 | WI125-7 | WIRE CEROC (HI-TEMP) | |

| REQ. | ITEM | PART NO. | DESCRIPTION | SYMBOL |
|--|------|-------------------|-----------------|----------------|
| THE TECHNICAL MATERIEL CORP. MAMARONECK, NEW YORK AR-132 ASS'Y. SHUNT POWER INPUT | | | | |
| STOCK SIZE | | | | |
| MATERIAL | | | | |
| TYPE & TEMPER | | HEAT TREAT. SPEC. | DRAWN | CHECKER |
| | | | RK | Jude |
| FINISH & SPEC. NO. | | ELEC. DES. APP. | MECH. DES. APP. | FINAL APPROVAL |
| | | | | A-2033 |

| E | NOTE 2 DEL, ITEM 8 ADD, ITEM 1 WAS WI108-1 | 11.1.67 | 18586 | Wes. | | FB |
|---|---|---|---------|---------|------------|-----------|
| D | ITEM 1 WAS WI108-1 | 11.14.66 | 17254 | WHO | | |
| C | SPECS. REVISED PER EMN. 10285 | 10/28/63 | 10285 | | | |
| B | Added SPECIFICATIONS Added Note 2. Brackets added to Item No. 2 | 3/14/61 | 4424 | | | RK |
| A | Item #1 Length was 8" on procedure @ 7 turns were 5 turns | 1/9/61 | 3881 | RLU | | SFM |
| SYM | DESCRIPTION | DATE | CH. NO. | DRAFTS | CHECKER | ENG. APP. |
| UNLESS OTHERWISE SPECIFIED: DIMENSIONS ARE IN INCHES TOLERANCES ON FRACTIONS ± 1/64 DECIMALS ± .005 ANGLES ± 1/20 | | SCALE: MAXIMUM ALLOWABLE TOLERANCES HAVE BEEN DETERMINED AND ANY DEVIATIONS WILL BE CAUSE FOR REJECTION. REMOVE ALL BURRS AND SHARP EDGES | | 2 | APP-4 | 12-9-60 |
| | | REQ. PER UNIT | MODEL | SECTION | ASS'Y. NO. | DATE |
| | | USED ON | | | | |