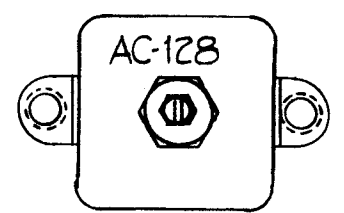
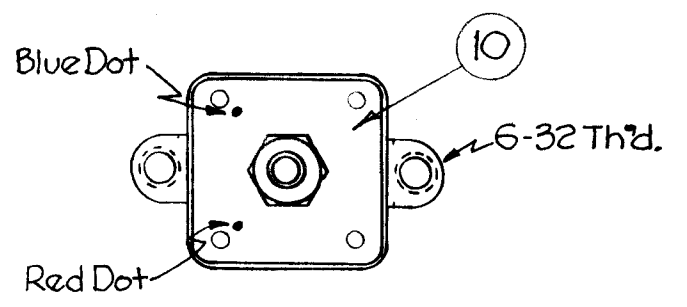
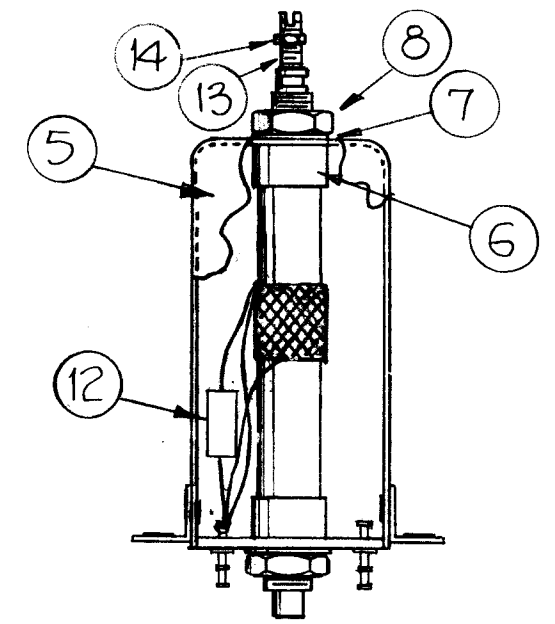


A-1966 D

STAMP CAN AS SHOWN 1/8 HIGH BLACK GOTHIC. NOTE ~ STAMP TMC IN SIGNSIA AND APPROVAL ON SIDE OF CAN.



CEMENT COIL FORMS TO BUSHINGS WITH GL-103.



COLOR CODE TERMINAL BOARD AS SHOWN.

D		IT 12 WAS CM15C221J	11.1.66	17128	WHD	JCS	
C		IT # 11, 15, 16, 17 DELETED #5 & 6 OF WINDING DATA REV.	7.24.64	11935	LB	JCS	
B	1	COLOR RED DELETED FROM ITEM 13 ON BUILD UP.	6/9/61	5045	DM	JCS	
A	2	ITEM 13 added Red SYMBOL	12/21/60	3796	DM	JCS	
	1	Item 1 was CF-117-2.0					
ISSUE	ITEM	CHANGED FROM	DATE	CH. NO.	DRAFTS	CHECKER	ENG. APP.

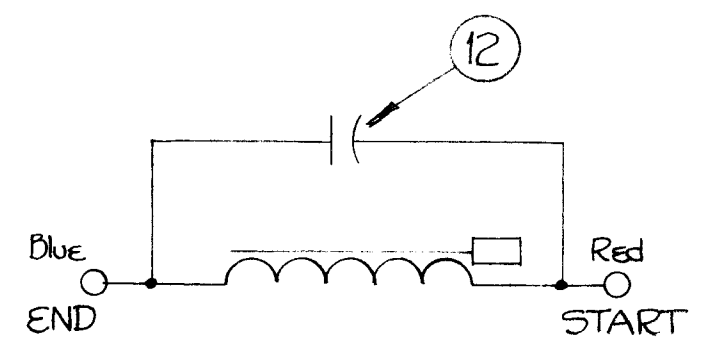
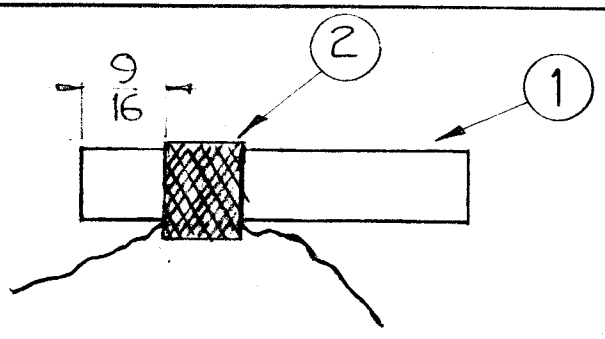
TOLERANCES		SCALE:
DEC. DIM. ±	MAXIMUM ALLOWABLE TOLERANCES HAVE BEEN DETERMINED AND ANY DEVIATIONS WILL BE CAUSE FOR REJECTION.	
FRAC. DIM. ±	REMOVE ALL BURRS AND SHARP EDGES	
ANGULAR DIM. ±		

WINDING MACHINE DATA (FOR PI WINDINGS)

Cam Gear 107
 Driver Gear 30
 Cam .250

WINDING DATA

1. Start winding 9/16 from end of form.
2. End winding at 47 turns.
3. Keep all leads approx. 3" long
4. Stake leads to coil form with item 3.
5. Fasten start of Item 2 to red dot terminal of item 10.
6. Fasten end of item 2 to blue dot terminal of item 10.
7. Bake unit for 1/2 hour at 215° F.
8. Coat windings and ring terminals with item 4.
9. Bake hard for 1/2 hour at 215° F.
10. Test as shown in test data.
11. Assemble as shown



Test Data (w/out core)

L = 20 uh (+ 1)
 Q = 70 or greater
 Freq. = 2.5 Mc

17	DELETED		
16	DELETED		
15	DELETED		
1	14	NTH0632BN8	NUT, HEX
1	13	CI-109-5	CORE, TUNING
1	12	CM15F221J03	CAPACITOR, MICA, FLXED
	11	DELETED	
1	10	PX-585-2	TERMINAL BOARD
X	9	BS-100	SOLDER SOFT
2	8	NT-102	NUT, HEX
2	7	LWI25MRN	LOCKWASHER, INT.
2	6	SM-145	BUSHING-COIL MOUNTS
1	5	A-1950-3	CAN-ALUMINUM
X	4	GL-104-2	INSULEX-U85
X	3	GL-103	DUCO, CEMENT
X	2	WI-104-5-41-DSQS	LITZ, WIRE
1	1	CF-117-1.93	COIL FORM 3/8 O.D.
REQ. ITEM	PART NO.	DESCRIPTION	SYMBOL

THE TECHNICAL MATERIEL CORP. MAMARONECK. NEW YORK			
AC-128 COIL ASS'Y 6BA7 MIXER PLATE			
STOCK SIZE		MATERIAL	
TYPE & TEMPER		HEAT TREAT. SPEC.	DRAWN
FINISH & SPEC. NO.		ELEC. DES. APP.	MECH. DES. APP.
1		CHG-1	SYNTH
REQ. PER UNIT		MODEL	PROJECT NO.
		ASS'Y. NO.	DATE
		9-7-60	
		USED ON	
		ASS-	
		A-1966 D	