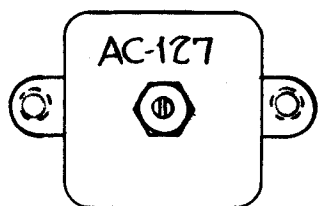


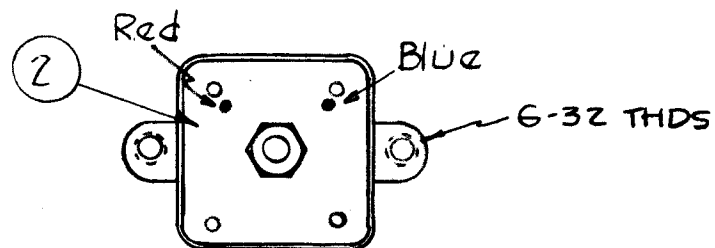
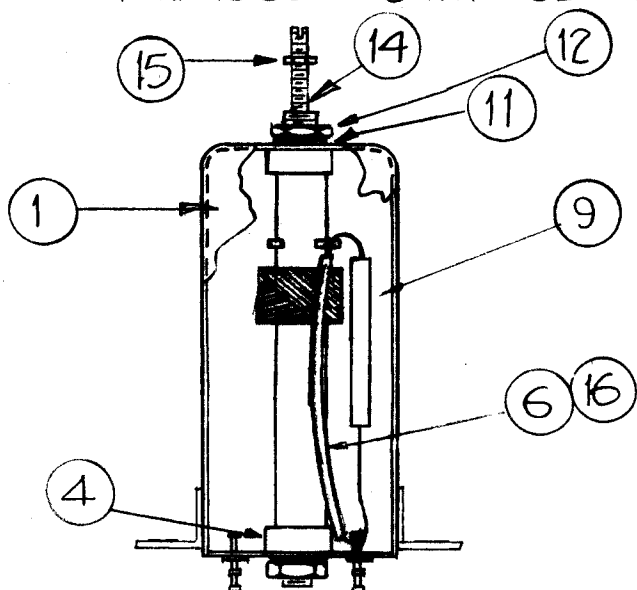
A-1956 F

Stamp can as shown 1/8 high black Gothic.

NOTE - Stamp T.M.C. Insignia & Approval on side of can.



CEMENT COIL FORM TO BUSHING WITH GL-103.



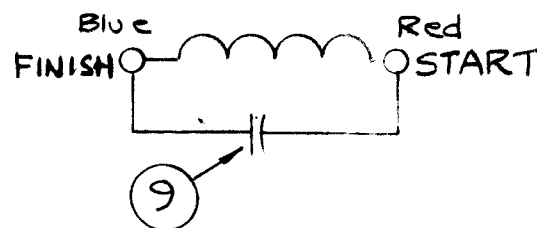
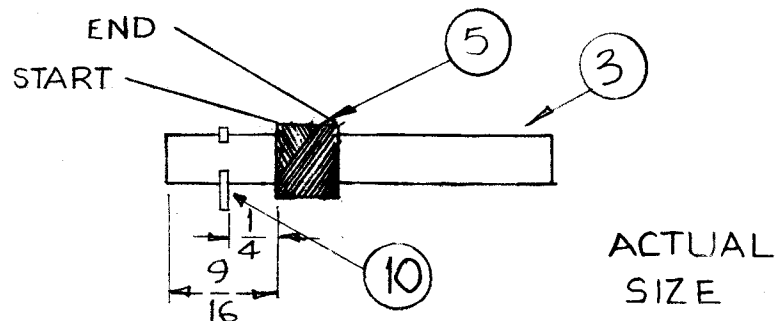
COLOR CODE FOR TERMINAL BOARD AS SHOWN.

WINDING MACHINE DATA (For PI Winding)

Cam Gear - 105
 Driver Gear - 69
 Cam - .250

WINDING DATA

1. Start winding 9/16 from end of form.
2. End winding at 44 turns
3. Keep all leads approximately 3" long.
4. Stake leads to coil form with GL-103 (Item 7)
5. Assembly ring terminals (Item 10) on form as shown, and stake with GL-103 (Item 7).
6. Fasten ends of item 5 to ring terminal.
7. Bake unit for 1/2 hour at 215° F.
8. Coat windings and ring terminals with GL-104-2
9. Bake hard for 1/2 hour at 215° F.
10. Test as shown in test data.
11. Assemble as shown.



TEST DATA (w/out core)

L = 11 uh (+5%)
 Q = 50 or greater
 FREQ. = 2.5 Mcs

Use Boonton Radio Corporation - Q. Meter 160A or the Equiv.

REQ. ITEM	PART NO.	DESCRIPTION	SYMBOL
X 16	WL-100-7	WIRE, BUSS-BAR	
L 15	NTH0348Bn6	NUT, HEX	
1 14	CT-116-5	CORE TUNING	RED
X B	BS-100	SOLDER SOFT	
2 12	NTH0832BN10	NUT, HEX	
2 11	LW108MN	LOCK WASHER	
1 10	TE-153-2	TERMINAL RING	
1 9	CM30E30ZG03	CAPACITOR, FIXED	
X 8	GL-104-2	INSULX	
X 7	GL-103	CEMENT DUCO	
X 6	PX-104-4-.034	INSULATION SLEEVING	GREEN
X 5	WI-104-5-41DSOS	WIRE LITZ	
2 4	SM-140-2	BUSHING COIL MOUNTING	
1 3	CF-122-1.93	COIL FROM 1/4 O.D.	
1 2	PX-585-1	Terminal Board	
1 1	A-1950-1	CAN ASS'Y	

THE TECHNICAL MATERIEL CORP. MAMARONECK, NEW YORK	
AC-127 COIL ASS'Y	
750 KC TRIPLER PLATE	
STOCK SIZE	
MATERIAL	
TYPE & TEMPER	HEAT TREAT. SPEC.
DRAWN	CHECKED
FINAL APPROVAL	
FINISH & SPEC. NO.	ELEC. DES. APP. MECH. DES. APP.

ISSUE	ITEM	CHANGED FROM	DATE	CH. NO.	DRAFTS	CHECKER	ENG. APP.
F		ITEM 9 WAS CM30D30ZG	11.1.66	17128	WHD	JCB	J
E	1	TE-153-2 WAS 2 REQ'D. RING TERM (ITEM 10) 3/8" DIM DELETED, IT#9 RELOCATED START & END ADDED	5/4/64	11320	AM	JCB	J

1	HFS-1	AX-389	11-5-63
1	CHG-2	DIVIDER	11-5-63
1	CHG-1	DIVIDER	9-2-60
REQ. PER UNIT	MODEL	PROJECT NO.	ASSY NO.
			DATE

USED ON

A-1956 F