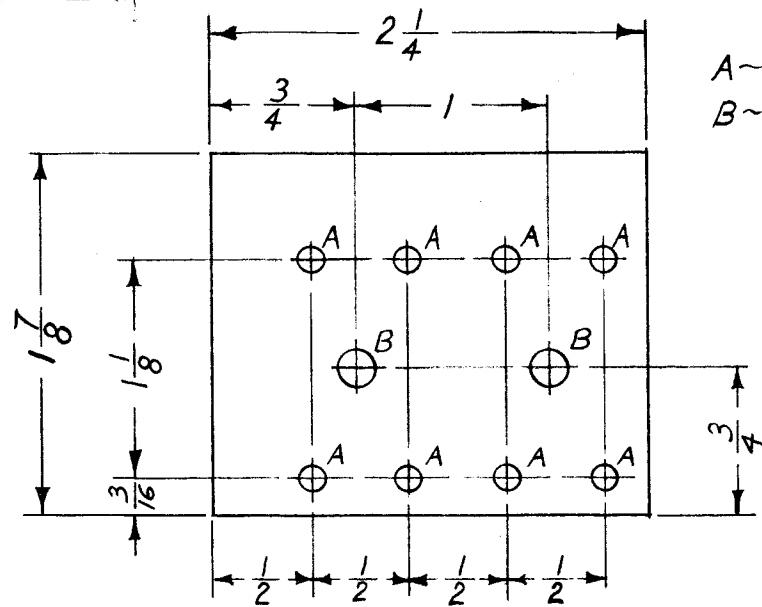


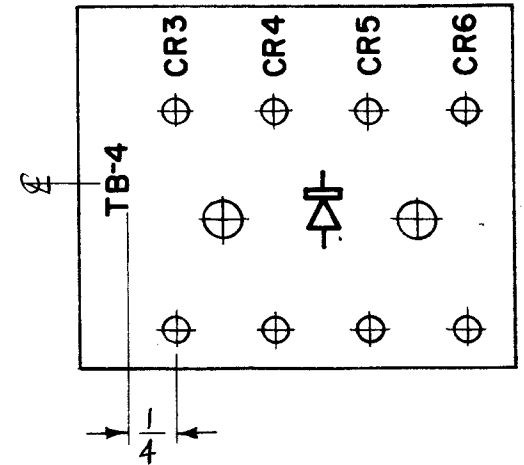
A-1940



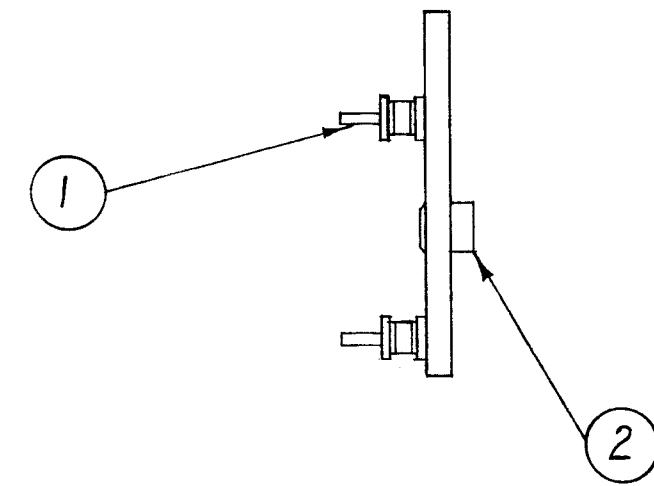
A ~ .116 DIA. 8 REQ.
B ~ .189 DIA. 2 REQ.

MACHINING
MATERIAL ~ 1/8, XXXP, PHENOLIC, NATURAL.

MARKING PROCESS: AS PER TMC SPECIFICATION S-727
STAMPING TO BE 1/8 HIGH BLACK GOTHIC.



STAMPING



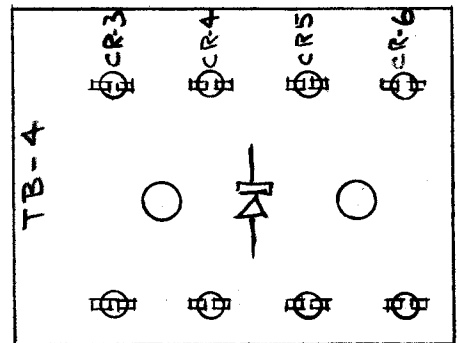
SUB-ASSEMBLY

* DO NOT SOLDER THESE CONNECTIONS.

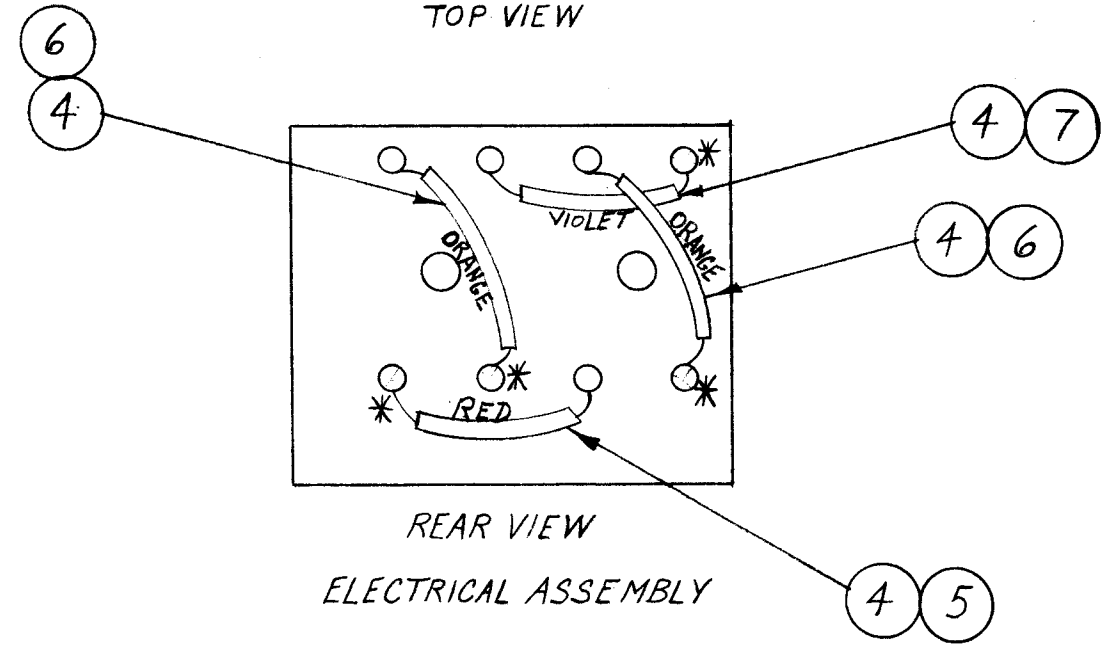
NOTICE TO PERSONS RECEIVING THIS DRAWING

THE TECHNICAL MATERIEL CORPORATION claims proprietary right in the material disclosed herein. This drawing is issued in confidence for engineering information only and may not be reproduced or used to manufacture anything shown hereon without permission from THE TECHNICAL MATERIEL CORPORATION to the user. This drawing is loaned for mutual assistance and is subject to recall at any time.

Property of:
THE TECHNICAL MATERIEL CORPORATION
MAMARONECK, NEW YORK



TOP VIEW



REAR VIEW
ELECTRICAL ASSEMBLY

REQ. ITEM	PART NO.	DESCRIPTION	SYMBOL
X 7	PX-104-9-034	INSULATION, SLEEVING	VIOLET
X 6	PX-104-8-034		ORANGE
X 5	PX-104-3-034	INSULATION, SLEEVING	RED
X 4	WL-100-7	WIRE, BUSS-BAR	
	3 BS-100	SOLDER, SOFT	
2 2	TE-108-13	STANDOFF, RIVET TYPE	
8 1	TE-109-3	TERMINAL, LUG	

STOCK SIZE		THE TECHNICAL MATERIEL CORP. MAMARONECK, NEW YORK	
PHENOLIC		TERMINAL BOARD # 4 ASSEMBLY	
MATERIAL			
XXXP		DRAWN	CHECKED
TYPE & TEMPER		FINAL APPROVAL	
NATURAL		A-1940	
FINISH & SPEC. NO.		ELEC. DES. APP. MECH. DES. APP.	

ISSUE ITEM	CHANGED FROM	DATE	CH. NO.	DRAFTS	CHECKER	ENG. APP.
TOLERANCES						
SCALE: FULL						
DEC. DIM. ±						
FRAC. DIM. ± 1/64						
ANGULAR DIM. ±						
MAXIMUM ALLOWABLE TOLERANCES HAVE BEEN DETERMINED AND ANY DEVIATIONS WILL BE CAUSE FOR REJECTION. REMOVE ALL BURRS AND SHARP EDGES						

REQ. PER UNIT	MODEL	PROJECT NO.	ASS'Y. NO.	DATE
1	AFC-1			8-5-60
USED ON				