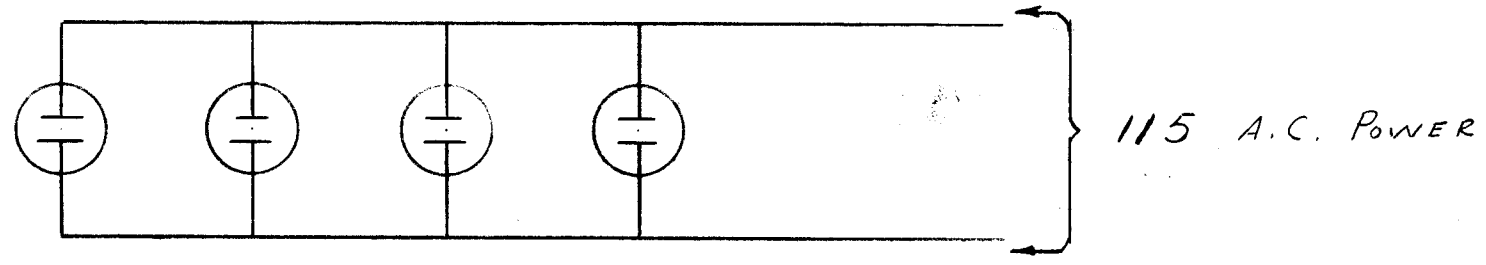
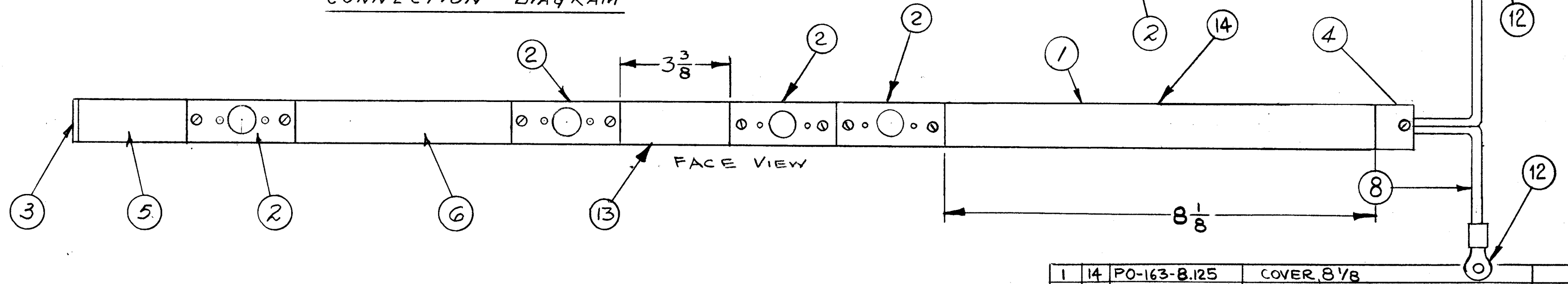


A-1697 E



CONNECTION DIAGRAM



NOTE 11 REPLACES DISCARDED SCREW
 ADD 11.10 BY DISCARDING EXISTING SCREW.

NOTE: APPROXIMATELY 8" OF ITEMS 8 & 9 SHOULD BE EXPOSED BEYOND ITEM 4

SUPERSEDED
 REPLACED BY AX674

USE FOR SPARE PARTS ONLY

| | | | | |
|---|----|--------------|-----------------------------|-------|
| 1 | 14 | PO-163-8.125 | COVER, 8 1/8 | |
| 1 | 13 | PO-163-3.375 | COVER, 3 3/8 | |
| 2 | 12 | TE-159-32960 | TERMINAL LUG # 10 | |
| 8 | 11 | SCBS0540BC3 | BINDER HEAD SCREW | |
| 8 | 10 | TE 112-2 | LUG TERMINAL | |
| | 9 | MWC14(19)U9 | CABLE, INSULATED | WHITE |
| | 8 | MWC14(19)U0 | CABLE, INSULATED | BLACK |
| + | 7 | + | + | |
| 1 | 6 | PO-163-6.000 | COVER, 6" | |
| 1 | 5 | PO-163-3.000 | COVER, 3" | |
| 1 | 4 | PO-162 | END FITTING, CABLE ENTRY | |
| 1 | 3 | PO-161 | END FITTING, BLANK | |
| 4 | 2 | JJ-670 | RECEPTACLE, A.C. TWIST LOCK | |
| 1 | 1 | MS-1754 | A.C. STRIP | |

| | | | | | | | |
|-------|------|--|---------|---------|--------|---------|-----------|
| E | | ADD SUPER. NOTE | 6/15/72 | 20726 | GE | EP | EP |
| D | | IT.13 & 14 ADDED, DICT. UPDAT. IT.6 WAS 3 REQ & 5 WAS 1 REQ | 8.22.64 | 12194 | hB | @ | EP |
| C | 1 | ITEM 12 ADDED | 2-7-61 | 4099 | MAF | PCT | SPM |
| B | | CU-110 (ITEM 7) DELETED | 7/31/59 | | PA | PA | EP |
| A | | ADDED ITS 10 & 11 | 7/22/59 | 1061 | AK | | OMB |
| ISSUE | ITEM | CHANGED FROM | DATE | CH. NO. | DRAFTS | CHECKER | ENG. APP. |

| | | | |
|----------------|--|---|--|
| TOLERANCES | | SCALE: CP | |
| DEC. DIM. ± | | MAXIMUM ALLOWABLE TOLERANCES HAVE BEEN DETERMINED AND ANY DEVIATIONS WILL BE CAUSE FOR REJECTION. | |
| FRAC. DIM. ± | | REMOVE ALL BURRS AND SHARP EDGES | |
| ANGULAR DIM. ± | | | |

| | | | | |
|---------------|-------|-------------|------------|------|
| 1 | RAK-7 | | | |
| REQ. PER UNIT | MODEL | PROJECT NO. | ASS'Y. NO. | DATE |
| USED ON | | | | |

| | | | |
|--------------------|-------------------|------------------------------|-----------------|
| REQ. ITEM | PART NO. | DESCRIPTION | SYMBOL |
| CP | | THE TECHNICAL MATERIEL CORP. | |
| STOCK SIZE | | MAMARONECK, NEW YORK | |
| CP | | AX-125 ASS'Y | |
| MATERIAL | | A.C. POWER STRIP ASS'Y | |
| CP | CP | | |
| TYPE & TEMPER | HEAT TREAT. SPEC. | DRAWN | CHECKED |
| CP | | | |
| FINISH & SPEC. NO. | | ELEC. DES. APP. | MECH. DES. APP. |
| | | | |

A-1697 E