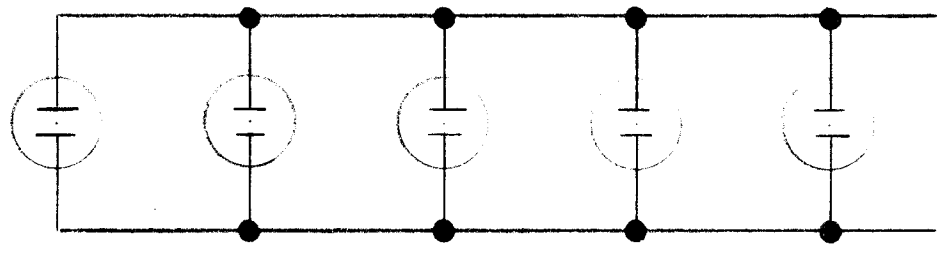
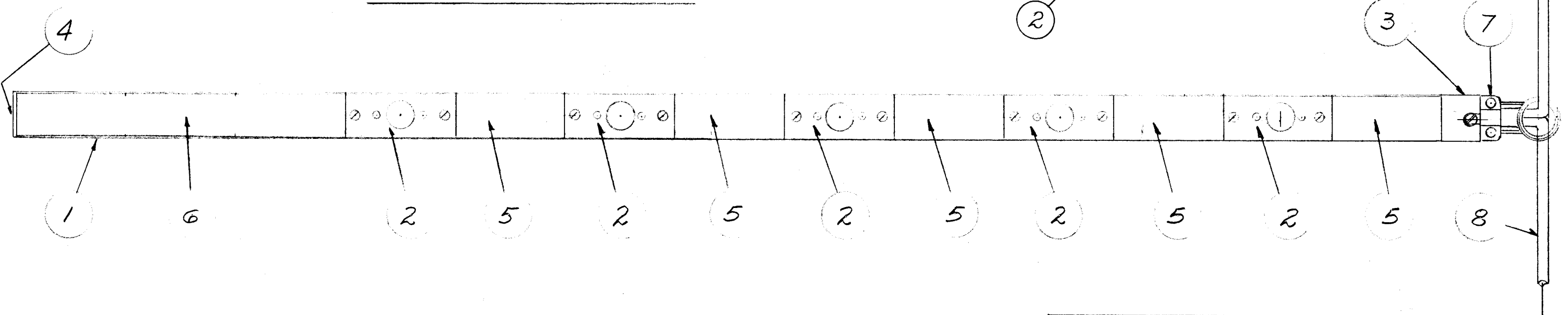


A-1684 A



CONNECTION DIAGRAM

NOTE 11.11 REPLACES DISCARDED SCREW
ADD 11.10 BY DISCARDING EXISTING SCREW.



NOTE: APPROXIMATELY 8" OF ITEMS 8 & 9 SHOULD BE EXPOSED BEYOND 11.7

| | | | | |
|-----------|----|-------------|-----------------------------|--------|
| 2 | 11 | SCBS0540BC3 | BINDER HEAD SCREW | |
| 2 | 10 | TE-112-2 | LUG TERMINAL | |
| | 9 | MWC14(19)U9 | CABLE, INSULATED | WHITE |
| | 8 | MWC14(19)U0 | CABLE, INSULATED | BLACK |
| 1 | 7 | CU-110 | FITTING, CONDUIT | |
| 1 | 6 | PO-163-6 | COVER 6" | |
| 5 | 5 | PO-163-3 | COVER 3" | |
| 1 | 4 | PO-161- | END FITTING, BLANK | |
| 1 | 3 | PO-162 | END FITTING, CABLE ENTRY | |
| 5 | 2 | JJ-170 | RECEPTACLE, A.C. TWIST LOCK | |
| 1 | 1 | MS-1754 | A.C. STRIP | |
| REQ. ITEM | | PART NO. | DESCRIPTION | SYMBOL |

| | | | | |
|------------|-----|------------------------------|-------------------|-----------------|
| CPO | | THE TECHNICAL MATERIEL CORP. | | |
| STOCK SIZE | | MAMARONECK, NEW YORK | | |
| CPO | | AX-118 ASSY | | |
| MATERIAL | | A.C. POWER STRIP ASSY | | |
| CPO | CPO | TYPE & TEMPER | HEAT TREAT. SPEC. | |
| | | DRAWN | CHECKED | FINAL APPROVAL |
| | | | | A-1684 |
| | | FINISH & SPEC. NO. | ELEC. DES. APP. | MECH. DES. APP. |

| | | | | | | | |
|----------------|------|-------------------|---|---------|--------|---------|-----------|
| ISSUE | ITEM | CHANGED FROM | DATE | CH. NO. | DRAFTS | CHECKER | ENG. APP. |
| A | 1 | ADDED ITS 10 & 11 | 5/21/59 | 1060 | | | DMB |
| TOLERANCES | | | SCALE: CPO | | | | |
| DEC. DIM. ± | | | MAXIMUM ALLOWABLE TOLERANCES HAVE BEEN DETERMINED AND ANY DEVIATIONS WILL BE CAUSE FOR REJECTION. | | | | |
| FRAC. DIM. ± | | | REMOVE ALL BURRS AND SHARP EDGES | | | | |
| ANGULAR DIM. ± | | | | | | | |

| | | | | |
|---------------|-------|-------------|-----------|---------|
| 1 | RAK-8 | | | 4-29-59 |
| REQ. PER UNIT | MODEL | PROJECT NO. | ASSY. NO. | DATE |
| USED ON | | | | |