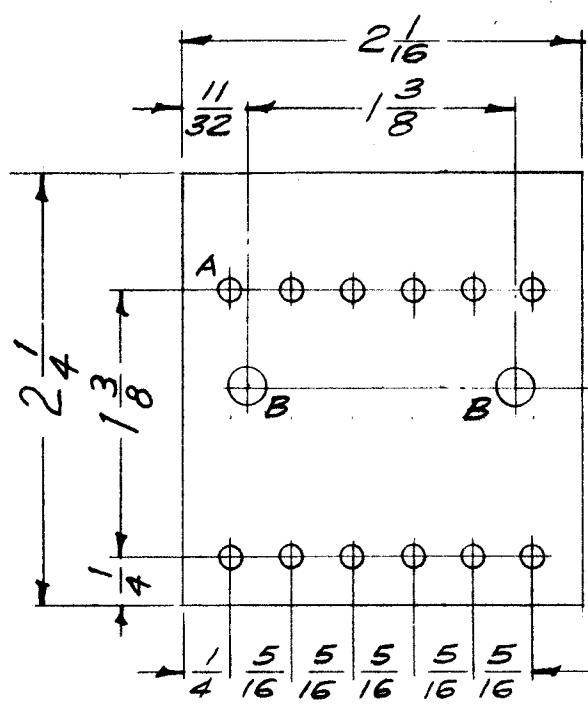
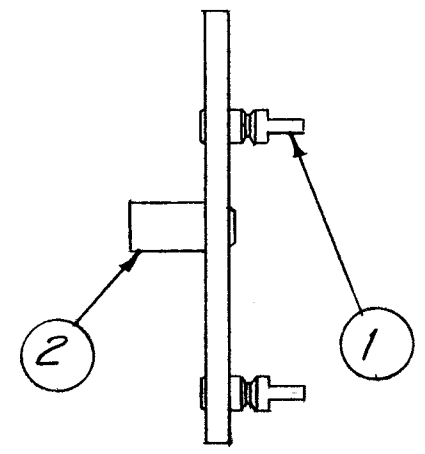


A-1642 C



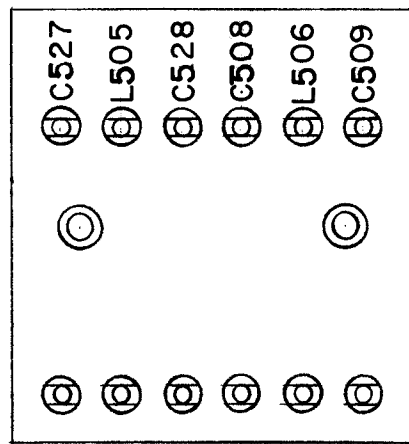
A- No. 33 Dr. (.113 D) 12 Req.
B- No. 12 Dr. (.189 D) 2 Req.

STAGE 1
MACHINING
A-1642-1

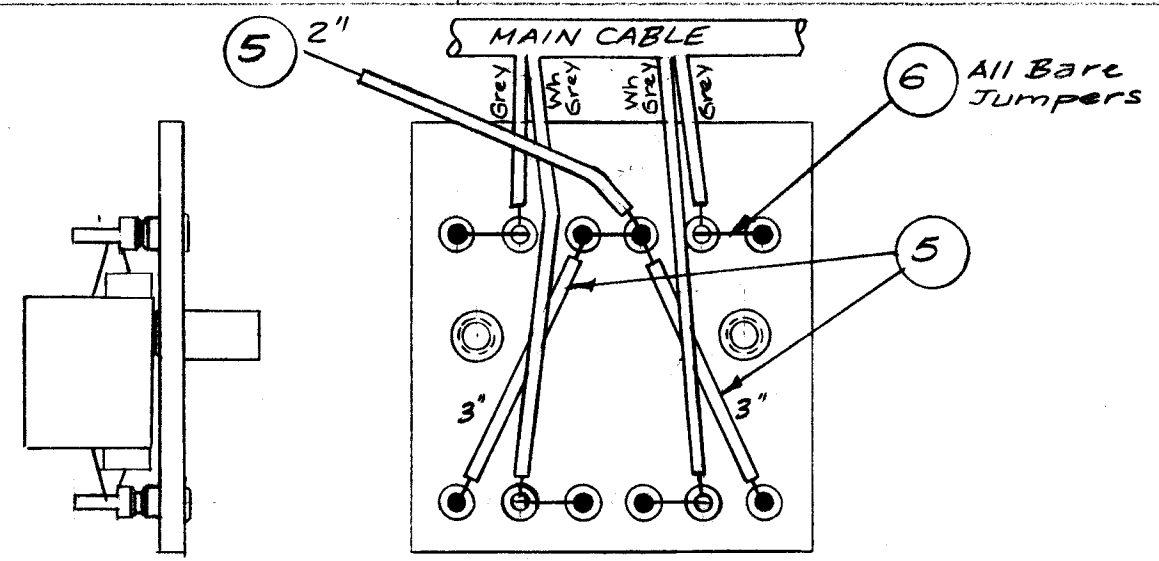
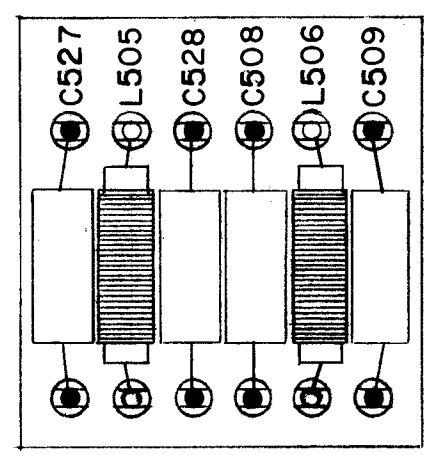


STAGE 2 MECH. ASS'Y.
A-1642-2

All Lettering to be 1/8 high black Gothic
MARKING PROCESS: AS PER TMC SPECIFICATION S-727



STAGE 3 LETTERING
A-1642-3



NOTE: Cable (CA-426) shown for Ref. Only.
Solder all Connections Indicated by blackened terminals.
All other connections (from Cable) to be soldered upon Ass'y. of Terminal Board into Unit.

STAGE 4 ELECTRICAL ASS'Y.
A-1642-4

NOTICE TO PERSONS RECEIVING THIS DRAWING

THE TECHNICAL MATERIEL CORPORATION claims proprietary right in the material disclosed hereon. This drawing is issued in confidence for engineering information only and may not be reproduced or used to manufacture anything shown hereon without permission from THE TECHNICAL MATERIEL CORPORATION to the user. This drawing is loaned for mutual assistance and is subject to recall at any time.

Property of:
THE TECHNICAL MATERIEL CORPORATION
MAMARONECK, NEW YORK

| REQ. ITEM | PART NO. | DESCRIPTION | SYMBOL |
|-----------|------------|----------------------------|--------------------|
| X 7 | BS-100 | Solder, Soft | |
| X 6 | WL-100-7 | Wire, Buss, (Size 22) | |
| B" 5 | MWC22(1)UO | Wire, Insulated, (Size 22) | BIK, |
| 2 4 | CL-105-2 | Coil, RF | L506 L505 |
| 4 3 | CM35B103K | Capacitor, Fixed, Mica | C508, 9, 27, 28 |
| 2 2 | TE-108-13 | Standoff, Rivet Type | |
| 12 1 | TE-109-3 | Terminal | |

| MATERIAL | | THE TECHNICAL MATERIEL CORP. MAMARONECK, NEW YORK | |
|--------------------|--|------------------------------------------------------|--|
| 1/8 THK. | | AC FILTER TERMINAL BOARD, ALL STAGES (TTG) | |
| STOCK SIZE | | | |
| Phenolic | | | |
| xxxxp laminate | | | |
| Natural | | | |
| FINISH & SPEC. NO. | | | |

| TYPE & TEMPER | HEAT TREAT. SPEC. | DRAWN | CHECKED | FINAL APPROVAL |
|---------------|-------------------|--------|---------|----------------|
| | | RWE | ARB | ARB |
| | | A-1642 | | C |

| ISSUE ITEM | CHANGED FROM | DATE | CH. NO. | DRAFTS | CHECKER | ENG. APP. |
|------------|----------------------------|---------|---------|--------|---------|-----------|
| C 1 | ITEM 3 WAS CM35C103K | 5-15-61 | 4903 | MAF | JCS | ARB |
| B 1 | SYMBOL NOS WERE 200 SERIES | 4/6/59 | | Jde | LG | JMB |
| A 1 | LETTERING ADDED | 2/18/59 | 806 | LG | Jde | ARB |

| TOLERANCES | | SCALE: FULL - Do Not Scale | |
|-------------------|--|------------------------------------------------------------------------------------------------------------------------------------|--|
| DEC. DIM. ± | | MAXIMUM ALLOWABLE TOLERANCES HAVE BEEN DETERMINED AND ANY DEVIATIONS WILL BE CAUSE FOR REJECTION. REMOVE ALL BURRS AND SHARP EDGES | |
| FRAC. DIM. ± 1/64 | | | |
| ANGULAR DIM. ± | | | |

| REQ. PER UNIT | MODEL | PROJECT NO. | ASS'Y. NO. | DATE |
|---------------|-------|-------------|------------|---------|
| 1 | TTG | GPT-10K | | 2-13-59 |
| USED ON | | | | |