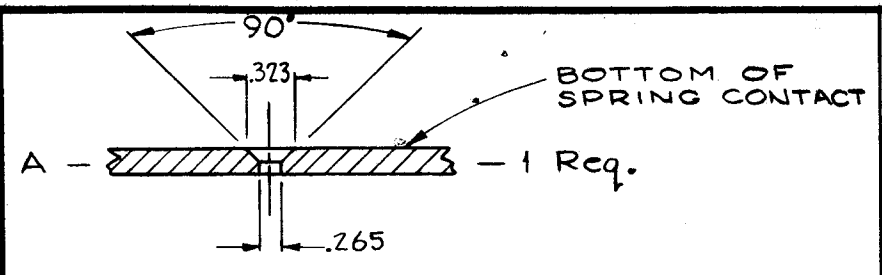
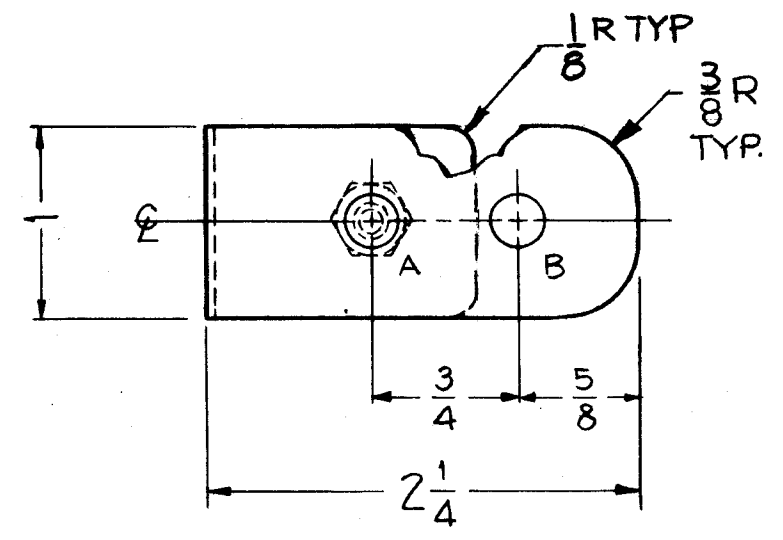
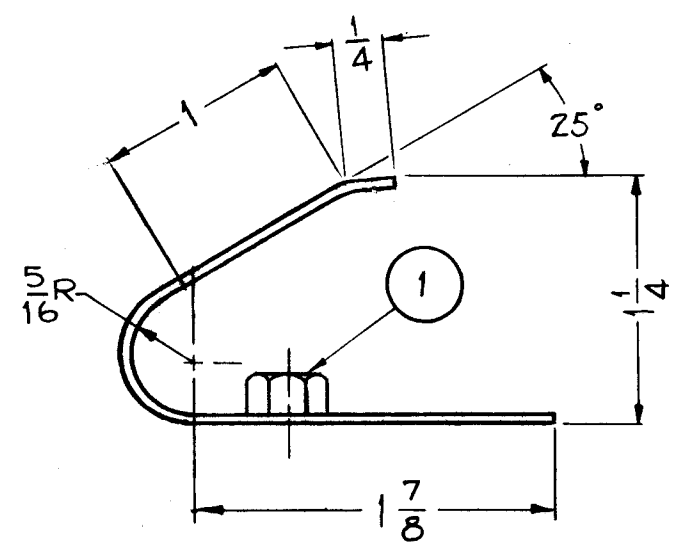


A 1629 D



B - 17/64 (.265) DIA. - 1 Req.

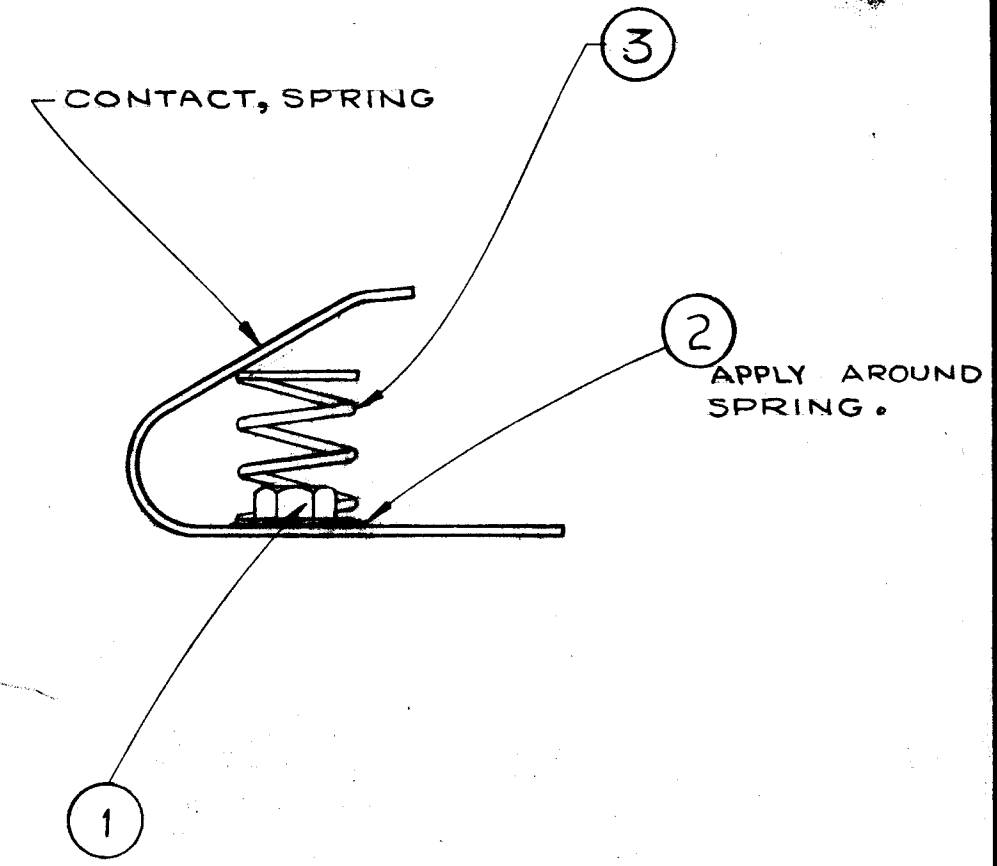


MAT'L ~.040 BERYLLIUM COPPER, 1/2 HARD.  
CONTACT, SPRING - 1 REQ

ISSUE	ITEM	CHANGED FROM	DATE	CH. NO.	DRAFTS	CHECKER	ENG. APP.
D		SPRING PICT. DELETED. IT. 3 P/N & CALLOUT ADD	3-1-67	17874	RME		
C		ADD IT. 2. CHG'D SOLDER NOTE	11/3/66	17092	RME		
B	1	REVISED USED-ON CHART 3/8 R. WAS 1/8 R. ADDED 1/8 R.	10/6/63	10123			
A	1	TO CONTACT ADDED 1/8 R TYP.	7-30-63	9670	AK.		

TOLERANCES		SCALE:
DEC. DIM. ±		MAXIMUM ALLOWABLE TOLERANCES HAVE BEEN DETERMINED AND ANY DEVIATIONS WILL BE CAUSE FOR REJECTION. REMOVE ALL BURRS AND SHARP EDGES
FRAC. DIM. ±		
ANGULAR DIM. ±		

7	GPT10K	AX-153		2-11-59
REQ. PER UNIT	MODEL	PROJECT NO.	ASS'Y. NO.	DATE
USED ON				



NOTICE TO PERSONS RECEIVING THIS DRAWING

THE TECHNICAL MATERIEL CORPORATION claims proprietary right in the material disclosed hereon. This drawing is issued in confidence for engineering information only and may not be reproduced or used to manufacture anything shown hereon without permission from THE TECHNICAL MATERIEL CORPORATION to the user. This drawing is loaned for mutual assistance and is subject to recall at any time.

Property of:

THE TECHNICAL MATERIEL CORPORATION

REQ. ITEM	PART NO.	DESCRIPTION	SYMBOL
1	3	SP127-5	SPRING, HELICAL, COMPRESSION
X	2	BS101-1	SOLDER, SILVER
1	1	SM 107-31	HEXAGON, INSERT
AS SHOWN		THE TECHNICAL MATERIEL CORP. MAMARONECK, NEW YORK	
STOCK SIZE			
AS SHOWN		AX-153 ASS'Y. ASSY	
MATERIAL:		CONTACT H.V.	
		J.C. BIELE	ARR
TYPE & TEMPER		HEAT TREAT. SPEC.	DRAWN
NICKEL PLATE AFTER ASSEMBLY			CHECKED
FINISH & SPEC. NO.		ELEC. DES. APP.	MECH. DES. APP.

A 1629 D