

A-1627 A

WINDING

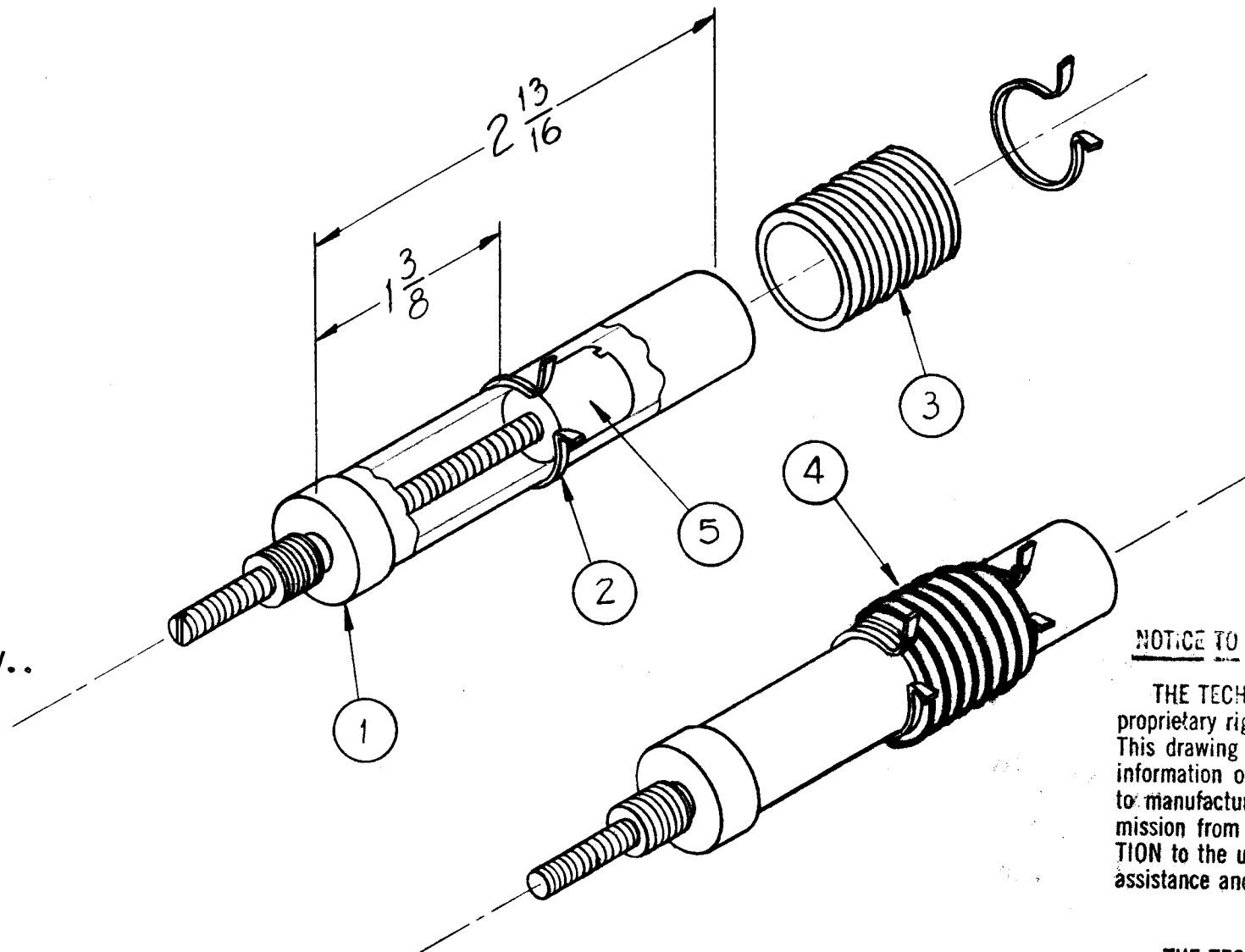
8 TURNS OF (ITEM 4) (SIZE 18).

FABRICATION

- 1-SLIP TERMINAL RING (ITEM 2) ON COIL FORM (ITEM 1) AS SHOWN.
- 2-FORCE FIT GROOVED COIL FORM (ITEM 3) ONTO INNER FORM (ITEM 1) AND CEMENT WITH INSULEX (ITEM 6).
- 3-SLIP SECOND TERMINAL RING (ITEM 2) ON INNER FORM.
- 4-CEMENT RINGS TO INNER FORM.
- 5-WIND 8 TURNS OF WIRE (ITEM 4) ON OUTER FORM.
- 6-SOLDER WIRE ENDS TO TERMINALS.
- 7-PAINT WINDING WITH INSULEX (ITEM 6).
- 8-BAKE AT 250°F FOR 1/2 HOUR.
- 9-INSERT CORE (ITEM 5).
- 10-TEST ON BOONTON Q METER, MODEL 160A OR EQUIV..

TEST DATA

L-MIN. .9 uhy
 L-MAX. 1.2 uhy
 Q-120 OR GREATER AT 7.9 MC.
 F-8 - 16 MC



NOTICE TO PERSONS RECEIVING THIS DRAWING

THE TECHNICAL MATERIEL CORPORATION claims proprietary right in the material disclosed hereon. This drawing is issued in confidence for engineering information only and may not be reproduced or used to manufacture anything shown hereon without permission from THE TECHNICAL MATERIEL CORPORATION to the user. This drawing is loaned for mutual assistance and is subject to recall at any time.

Property of:
 THE TECHNICAL MATERIEL CORPORATION
 MAMARONECK, NEW YORK

REQ.	ITEM	PART NO.	DESCRIPTION	SYMBOL
X	7	BS-100	SOLDER, SOFT	
X	6	GL 104-2	INSULEX, U-85	
1	5	CI 109-17	CORE, TUNING, RED	
X	4	WL100-5	WIRE, BUSS (SIZE 18)	
1	3	CF 125-3P0.75	COIL FORM, GROOVED	
2	2	TE-153-3	TERMINAL, RING TYPE	
1	1	CF-119-2.812	COIL FORM	
THE TECHNICAL MATERIEL CORP. MAMARONECK, NEW YORK				
STOCK SIZE				
MATERIAL				
RF COIL ASSY TUNED (8-16 MC) L 213				
TYPE & TEMPER		HEAT TREAT. SPEC.	DRAWN	CHECKED
FINISH & SPEC. NO.		ELEC. DES. APP.	MECH. DES. APP.	

ISSUE	ITEM	CHANGED FROM	DATE	CH. NO.	DRAFTS	CHECKER	ENG. APP.
A		ITEM 1 WAS CF119,2.81	11.14.66	17231	WJW	JCB	RF

1	RTF-2	MULT.	3-17-59
REQ. PER UNIT	MODEL	PROJECT NO.	ASS'Y. NO.
USED ON			

SCALE:
 MAXIMUM ALLOWABLE TOLERANCES HAVE BEEN DETERMINED AND ANY DEVIATIONS WILL BE CAUSE FOR REJECTION.
 REMOVE ALL BURRS AND SHARP EDGES

DEC. DIM. ±
 FRAC. DIM. ±
 ANGULAR DIM. ±

A-1627 A