

PROCEDURE

- Force Fit Bushing (item 4) into form (item 1)
- Secure terminals (item 2) to form with Insulex (item 6).
- Wind $9\frac{1}{4}$ Turns of wire (item 3) on form. Bring out tap at 5 turns from top. Slip sleeving (item 7) over tap. Solder wire ends to proper terminals.
- Paint Winding with Insulex.
- Bake for $\frac{1}{2}$ hour at 250°F .
- Insert Core (item 5).
- Test as shown Below. Use Boonton Q-meter Model 160A or Equiv.

**SUPERSEDED
DIRECTLY REPLACED
BY CL 145**



MIN. IND. MUST BE LESS THAN - .51 μhy
 MAX. IND. MUST BE MORE THAN - .86 μhy
 Q AT 25 MC MUST BE MORE THAN - 150
 TEST FREQ. - 25 MC
 OPERATING FREQ. - 16-20 MC

ISSUE ITEM	CHANGED FROM	DATE	CH. NO.	DRAFTS	CHECKER	ENG. APP.
D	REPLACED BY CL 145	6-7-71	20392	CU		
C	IT 5 WAS CI 116-2	1-16-67	17683	WKO		
B	DIM 1/8 WAS 3/32	6/7/61	5052	DRM		
A	DIM 3/8 WAS 7/16	6/17/60	2503	WJ		
	ITEM 1 WAS CF-125-2 PL. 12					
	ITEM 4 DELETED					
	7/16 WAS 3/32	11/3/59	641	ave		

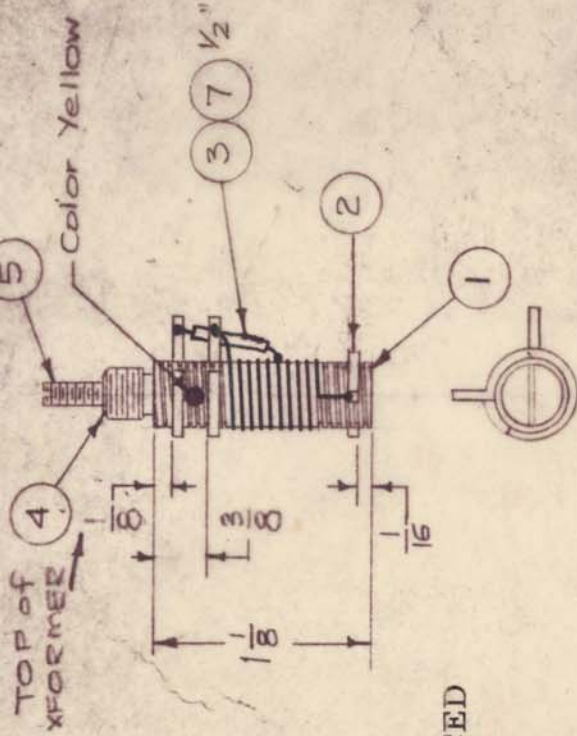
TOLERANCES

DEC. DIM. \pm
 FRAC. DIM. \pm
 ANGULAR DIM. \pm

SCALE: FULL

MAXIMUM ALLOWABLE TOLERANCES HAVE BEEN DETERMINED AND ANY DEVIATIONS WILL BE CAUSE FOR REJECTION. REMOVE ALL BURRS AND SHARP EDGES

REQ. PER UNIT	MODEL	ASSY. NO.	DATE
1	RFB-1	GPT10K	1P 22-6D
	REC		



REQ. ITEM	PART NO.	DESCRIPTION	SYMBOL
X 8	BS-100	Solder, Soft	
1/2"	PX-100-1-034	Insulation, Sleeving (size 20)	BIK
X 6	GL-104-2	Insulex, U-85	
1	CI109-2	Core, Tuning, Red	
#	Deleted		#
X 3	WL-100-6	Wire, Buss (Size 20)	
3	TE-153-2	Terminal, Ring Type	
1	CF-128-2	Coil Form, Grooved	

THE TECHNICAL MATERIEL CORP.
 MAMARONECK, NEW YORK

CL-145 ASSY

(RF COIL TUNED) (16-20 MC)

16/19/58

CHKD

ATB

DRWN

CHECKED

ATB

DRWN

TYPE & TEMPER HEAT TREAT. SPEC.

FINISH & SPEC. NO.

FINAL APPROVAL

A-1610

E