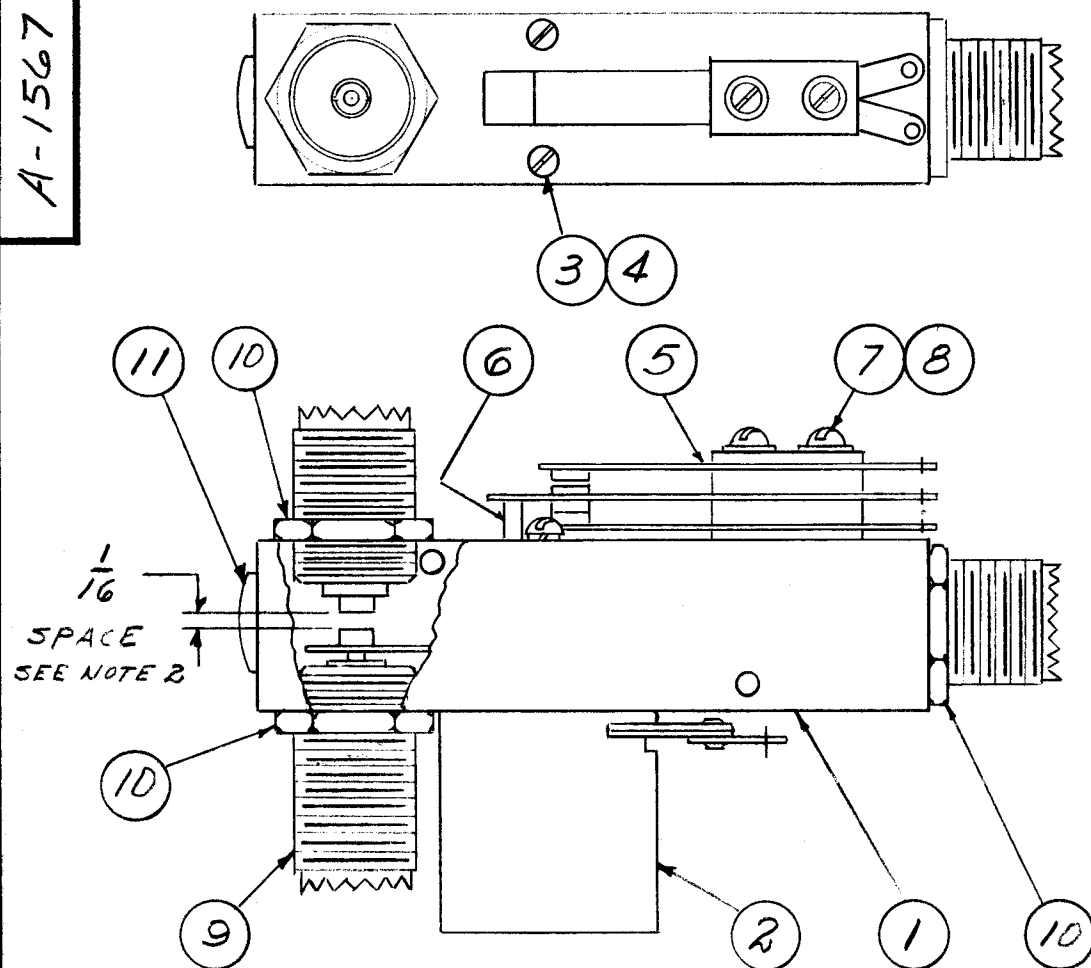


A-1567

NOTE: FOR ASSEMBLING SEE TMC SPECIFICATION NO 5-388



NOTICE TO PERSONS RECEIVING THIS DRAWING

THE TECHNICAL MATERIEL CORPORATION claims proprietary right in the material disclosed hereon. This drawing is issued in confidence for engineering information only and may not be reproduced or used to manufacture anything shown hereon without permission from THE TECHNICAL MATERIEL CORPORATION to the user. This drawing is loaned for mutual assistance and is subject to recall at any time.

Property of:

THE TECHNICAL MATERIEL CORPORATION
MAMARONECK, NEW YORK

REQ. ITEM	PART NO.	DESCRIPTION	SYMBOL
1	11	SUPPLIED WITH ITEM -1	PLUG
3	10	1-W/ITEM 9 2-W/ITEM 1	NUT
1	9	PD-155	CONNECTOR UHF
2	8	SUPPLIED WITH ITEM 5	SCREW 4-40X5/8
2	7	SUPPLIED WITH ITEM 5	WASHER FLAT
1	6	SUPPLIED WITH ITEM 5	PLUNGER
1	5	PD-154	SWITCH SPDT
2	4	SUPPLIED WITH ITEM 2	SCREW 4-40X1
2	3	SUPPLIED WITH ITEM 2	LOCKWASHER
1	2	PD-153	MAGNET ASS'Y
1	1	PD-152	RELAY BODY
CPD		THE TECHNICAL MATERIEL CORP. MAMARONECK, NEW YORK	
STOCK SIZE		MAGNET RELAY ASS'Y	
CPD		MATERIAL	
CPD	CPD	8/15/58	AWC
TYPE & TEMPER	HEAT TREAT. SPEC.	DRAWN	CHECKED
CPD			
FINISH & SPEC. NO.		ELEC. DES. APP.	MECH. DES. APP.
			A-1567

ISSUE	ITEM	CHANGED FROM	DATE	CH. NO.	DRAFTS	CHECKER	ENG. APP.
TOLERANCES		SCALE:					
DEC. DIM. ±		MAXIMUM ALLOWABLE TOLERANCES HAVE BEEN DETERMINED AND ANY DEVIATIONS WILL BE CAUSE FOR REJECTION.					
FRAC. DIM. ±		REMOVE ALL BURRS AND SHARP EDGES					
ANGULAR DIM. ±							

1	TRL-2 / 502			8-26-58
1	TRL-1 / 702			8-26-58
REQ. PER UNIT	MODEL	PROJECT NO.	ASS'Y. NO.	DATE
USED ON				