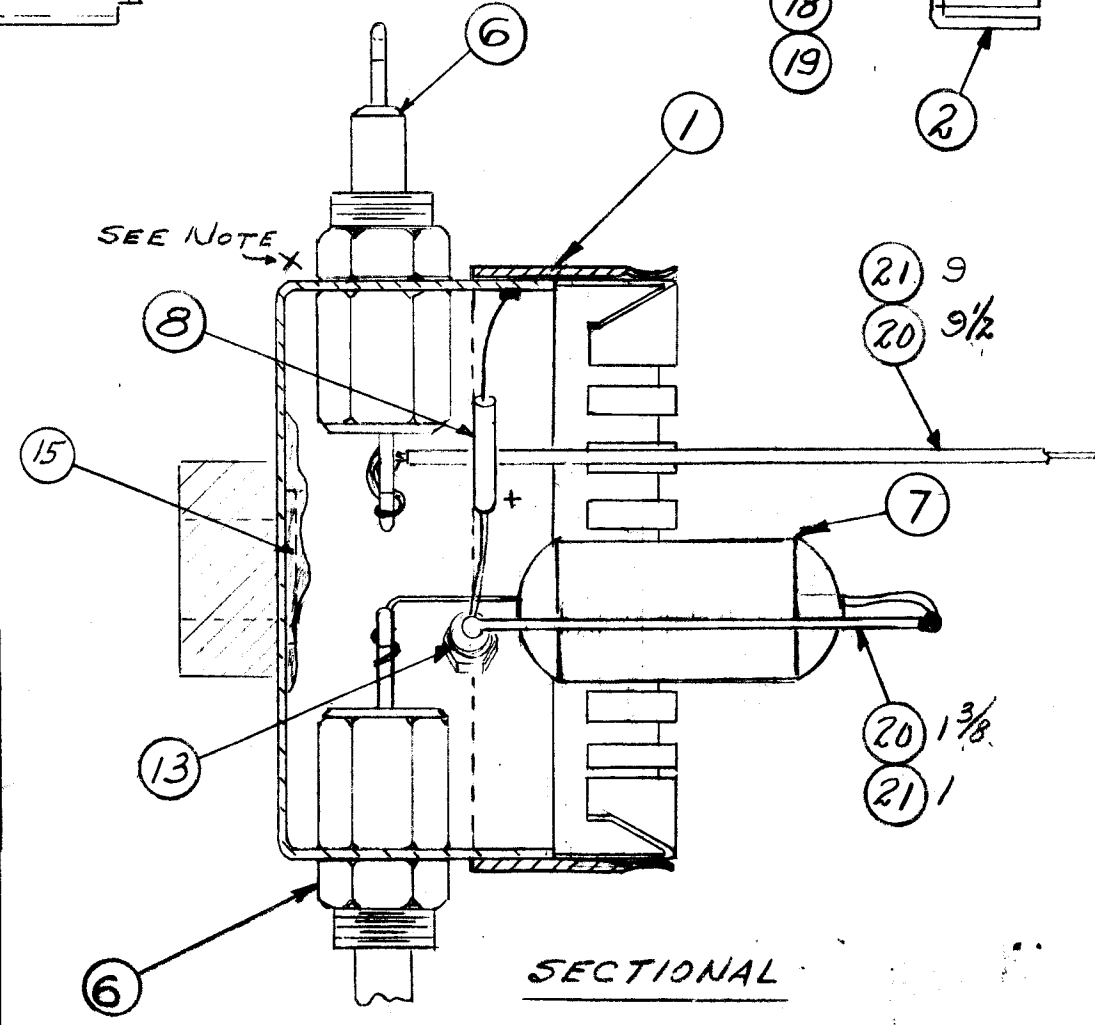
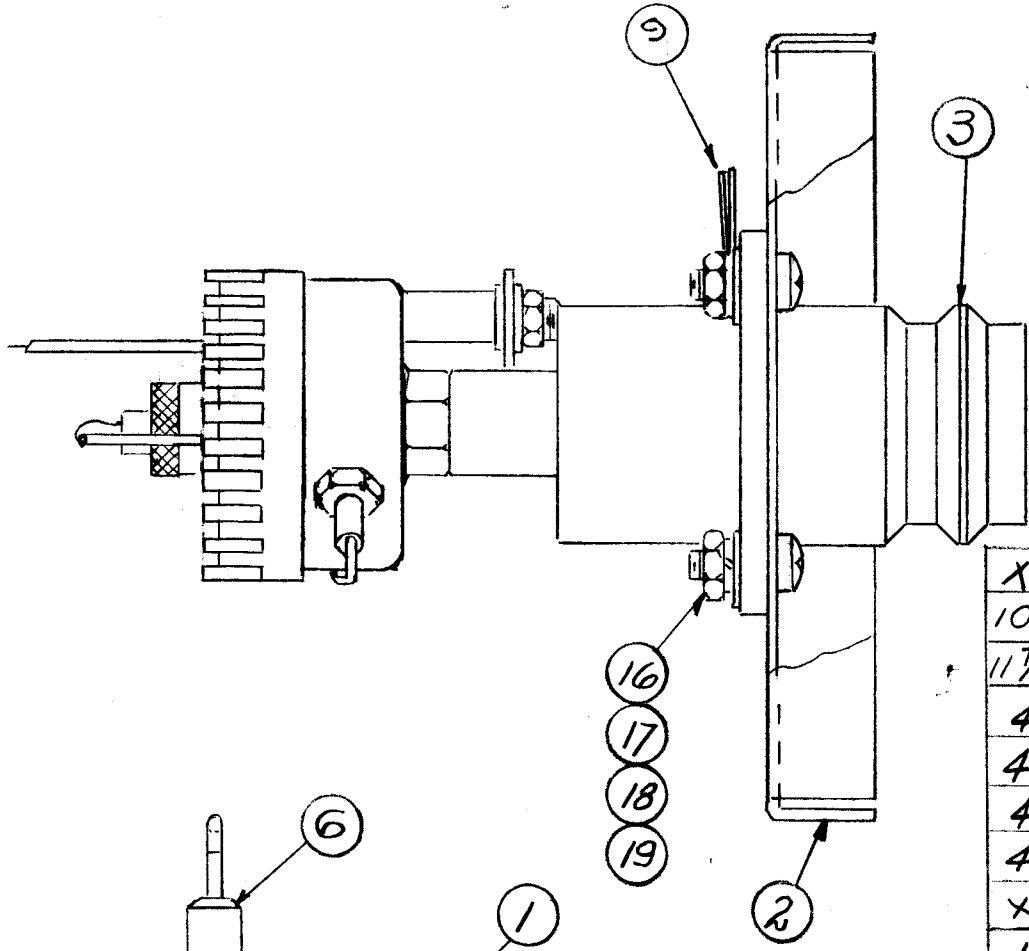
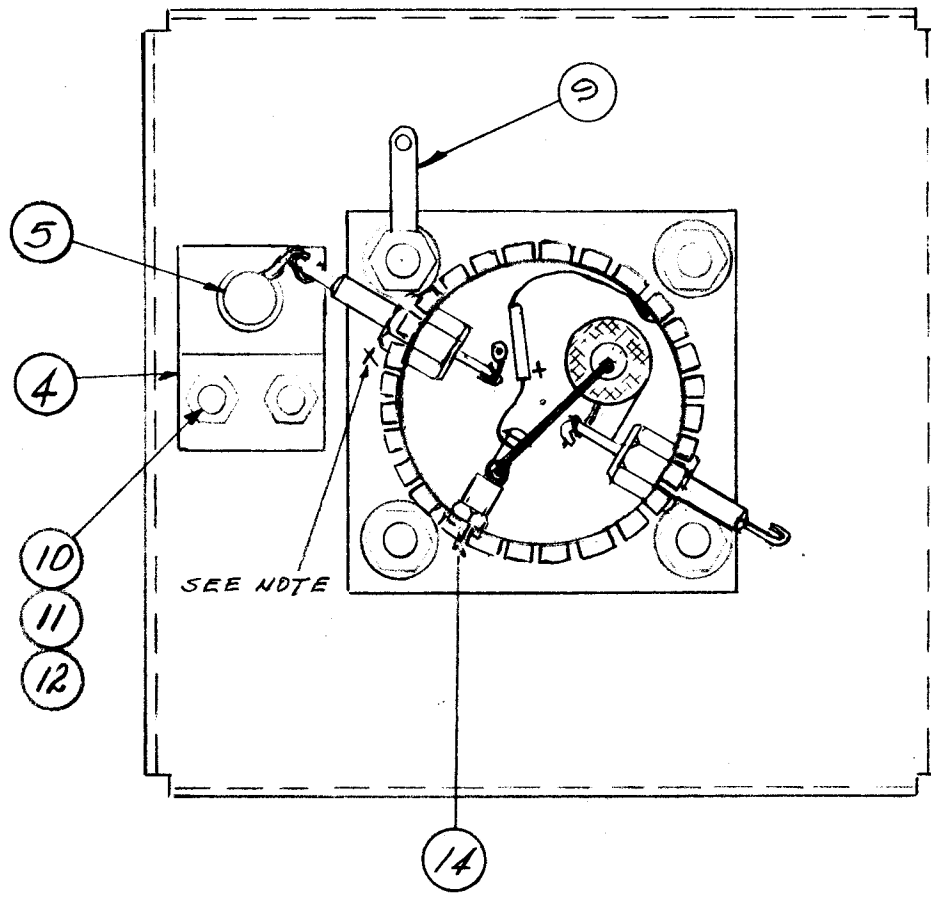


A 1547 G



NOTICE TO PERSONS RECEIVING THIS DRAWING

THE TECHNICAL MATERIEL CORPORATION claims proprietary right in the material disclosed hereon. This drawing is issued in confidence for engineering information only and may not be reproduced or used to manufacture anything shown hereon without permission from THE TECHNICAL MATERIEL CORPORATION to the user. This drawing is loaned for mutual assistance and is subject to recall at any time.

Property of:
THE TECHNICAL MATERIEL CORPORATION
MAMARONECK, NEW YORK

X-NOTE:
THE FEED THRU CAPACITOR NEXT TO THE PAINTED POINT IS CONNECTED TO VARIABLE CAPACITOR - CV-102.

COLOR CODE WITH RED PAINT ON ASSEMBLY

X	22	BS 100	SOLDER, SOFT
10	21	PX 370-16-7	INSULATION, SLEEVING, TEFLON
11	20	WL 100-7	WIRE, BUSS #22
4	19	NTH0832 BN11	NUT, HEX.
4	18	FW08LBN	WASHER, FLAT
4	17	LWS08MBN	LOCKWASHER, SPRING TYPE
4	16	SCBP0832BN8	SCREW, MACHINE (Paint Heads) S-220
X	15	BS101-1	SILVER, SOLDER
1	14	SCBP0440BN3	SCREW, MACHINE
1	13	TE 102-2	TERMINAL, TURRET
2	12	NTH0440BN8	NUT, HEX.
2	11	LWE04MRN	LOCKWASHER EXT.
2	10	SCBP0440BN5	SCREW, MACHINE
2	9	TE 113-169	LUG, TERMINAL
1	8	IN252A	DIODE, XTAL
1	7	CL 140-1	CHOKE, R.F.
2	6	CK70A102M	CAPACITOR, FIXED, FEED THRU
1	5	CV 102	CAPACITOR, VAR., GLASS
1	4	MS 1273	BRACKET
1	3	JJ 163	CONNECTOR, FEED THRU
1	2	MS 1276	PLATE, RIGHT SIDE
1	1	A 1806	CAN, ASSEMBLY

ISSUE	ITEM	CHANGED FROM	DATE	CH. NO.	DRAFTS	CHECKER	ENG. APP.
G		IT. 15 WAS BS101 IT. 8 WAS IN252	1-26-67	17729	RME	<i>[Signature]</i>	<i>[Signature]</i>
F	3	ON IT. (6) POLARITY CLARIFIED					
F	2	ON NOTE CV-102 WAS CV-101-1	7-5-63	9391	<i>[Signature]</i>	<i>[Signature]</i>	<i>[Signature]</i>
F	1	ITEMS (20 & 21) LENGTH WAS 10/16					
E	2	HARDWARE CLARIFIED	3-25-63	8632	<i>[Signature]</i>	<i>[Signature]</i>	<i>[Signature]</i>
E	1	ITEM (3) WAS JJ-137					
D	1	Item 1 Was A-1624	6-9-61	4957	W.A.F.	<i>[Signature]</i>	<i>[Signature]</i>
C	1	ITEM 1 WAS BX-163	1/24/59		J.C.B.	<i>[Signature]</i>	<i>[Signature]</i>
B	1	Item 7 was CL-101-3	11/3/58	321	<i>[Signature]</i>	<i>[Signature]</i>	<i>[Signature]</i>
A	1	ITEM 9 PT. No WAS TE-113-180	6/23/58	394	<i>[Signature]</i>	<i>[Signature]</i>	<i>[Signature]</i>

TOLERANCES		SCALE:	
DEC. DIM. ±		MAXIMUM ALLOWABLE TOLERANCES HAVE BEEN DETERMINED AND ANY DEVIATIONS WILL BE CAUSE FOR REJECTION.	
FRAC. DIM. ±		REMOVE ALL BURRS AND SHARP EDGES	
ANGULAR DIM. ±			

1	SWR-3000 CU			6-3-58
REQ. PER UNIT	MODEL	PROJECT NO.	ASSY. NO.	DATE
USED ON				

REQ. ITEM	PART NO.	DESCRIPTION	SYMBOL
<i>CR</i>			
STOCK SIZE			
<i>CR</i>			
MATERIAL			
<i>CR</i> <i>CR</i>			
TYPE & TEMPER		HEAT TREAT. SPEC.	DRAWN
<i>CR</i>		<i>CR</i>	<i>[Signature]</i>
FINISH & SPEC. NO.		ELEC. DES. APP.	MECH. DES. APP.
<i>CR</i>		<i>[Signature]</i>	<i>[Signature]</i>
			A1547 G