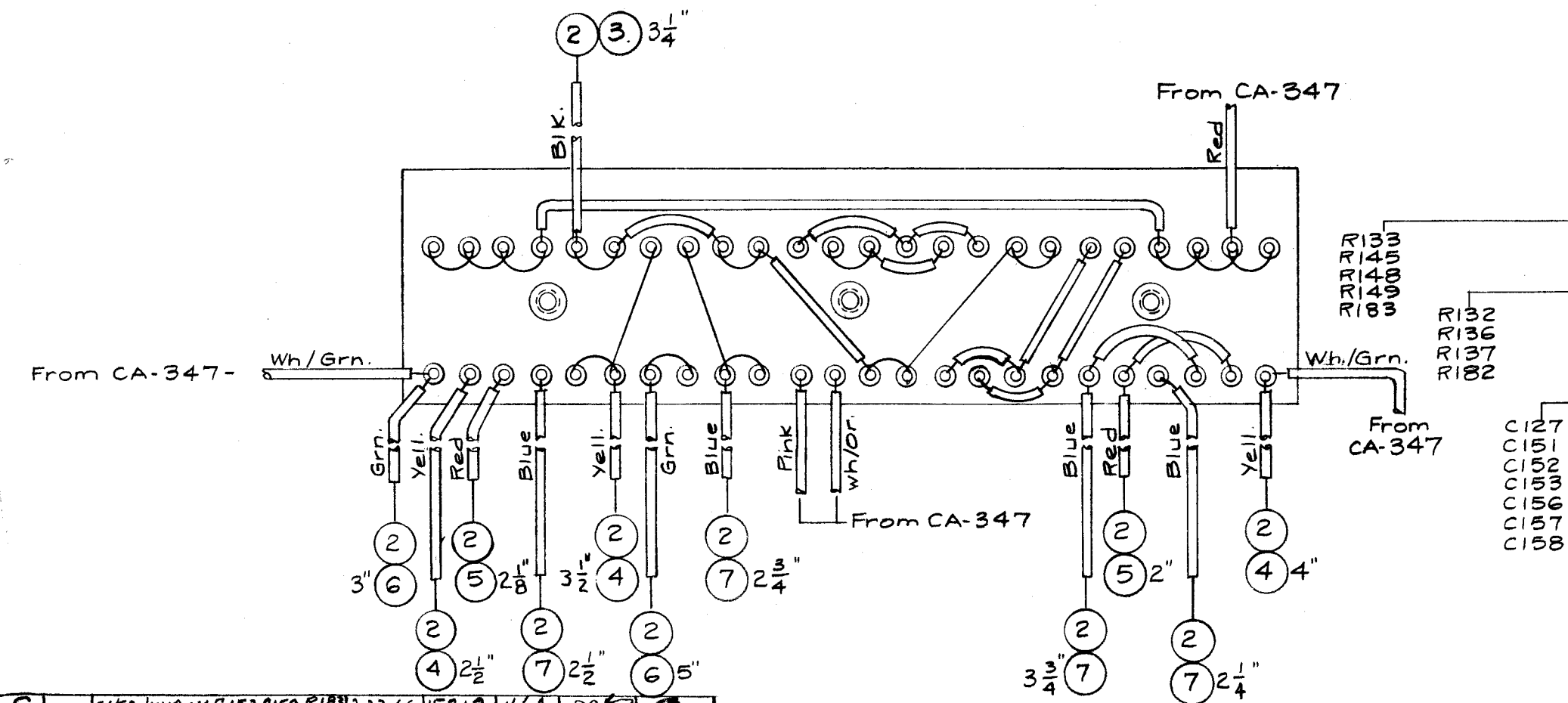


NOTICE TO PERSONS RECEIVING THIS DRAWING

THE TECHNICAL MATERIEL CORPORATION claims proprietary right in the material disclosed hereon. This drawing is issued in confidence for engineering information only and may not be reproduced or used to manufacture anything shown hereon without permission from THE TECHNICAL MATERIEL CORPORATION to the user. This drawing is loaned for mutual assistance and is subject to recall at any time.

Property of:
THE TECHNICAL MATERIEL CORPORATION
MAMARONECK, NEW YORK



REQ.	ITEM	PART NO.	DESCRIPTION	SYMBOL
2	18	RC42GF823K	Resistor, Fixed, Comp.	R138 R152
1	17	RC30GF102K	Resistor, Fixed, Comp.	R191
1	16	RC42GF104K	Resistor, Fixed, Comp.	R139
2	15	RC20GF224K	Resistor, Fixed, Comp.	R134 R184
5	14	RC20GF106K	Resistor, Fixed, Comp.	
1	13	RC20GF225K	Resistor, Fixed, Comp.	R146
4	12	RC20GF104K	Resistor, Fixed, Comp.	
2	11	1N303	Diode, Crystal	CR105 CR104
2	10	CN106C104K	Capacitor, Fixed, Mylar	C129 C130
7	9	CC-100-16	Capacitor, Fixed, Ceramic Disc	
X	8	BS-100	Solder, Soft	
11 1/2"	7	PX-104-6-022	Insulation, Sleeving	Blue
8"	6	PX-104-4-022	Insulation, Sleeving	Grn.
8"	5	PX-104-3-022	Insulation, Sleeving	Red
10"	4	PX-104-2-022	Insulation, Sleeving	Yell.
X	3	PX-104-1-022	Insulation, Sleeving	Blk.
X	2	WL-100-8	Wire, Buss	#24.
1	1	PX-381	Terminal Board	

ISSUE	ITEM	CHANGED FROM	DATE	CH. NO.	DRAFTS	CHECKER	ENG. APP.
C	1	CHGD. JUMPS ON C157, C152, R138, R139, R146, R152	2-23-66	15818	H/LA	RL	ARB
B	1	PICT. DIM. 2 WAS 3/4; 3 1/2 WAS 2 3/4; 2 1/4 WAS 2 1/2. ON B/M; IT. 4 QTY. WAS 9 1/4; IT. 5 QTY. WAS 5 1/4; IT. 7 QTY. WAS 11 1/2. ON C127, C153 & C158; INS. SLEEVING ADDED.	2/17/65	13531	J.L.	JCB	ARB
A	1	ITEM 11 WAS IN 300	8/23/61	5483	WA	RL	ARB

Note: All Jumpers will be item 2.
All Jumper Sleeving will be item 3.

TOLERANCES		SCALE:	
DEC. DIM. ±	MAXIMUM ALLOWABLE TOLERANCES HAVE BEEN DETERMINED AND ANY DEVIATIONS WILL BE CAUSE FOR REJECTION. REMOVE ALL BURRS AND SHARP EDGES	1	A-1516
FRAC. DIM. ±		REQ. PER UNIT	MODEL
ANGULAR DIM. ±			PROJECT NO.

REQ. PER UNIT	MODEL	PROJECT NO.	ASS'Y. NO.	DATE
1	A-1516	SBE-2		3-28-58

THE TECHNICAL MATERIEL CORP. MAMARONECK, NEW YORK			
VOX-SQUELCH TERMINAL BOARD ASS'Y. (A-1516)			
MATERIAL		FINISH & SPEC. NO.	
TYPE & TEMPER.	HEAT TREAT. SPEC.	DRAWN	CHECKED
		ARB	ARB
		ELEC. DES. APP.	MECH. DES. APP.
		A-1521	C