

USED ON
MODEL
ASSY. NO.
DATE

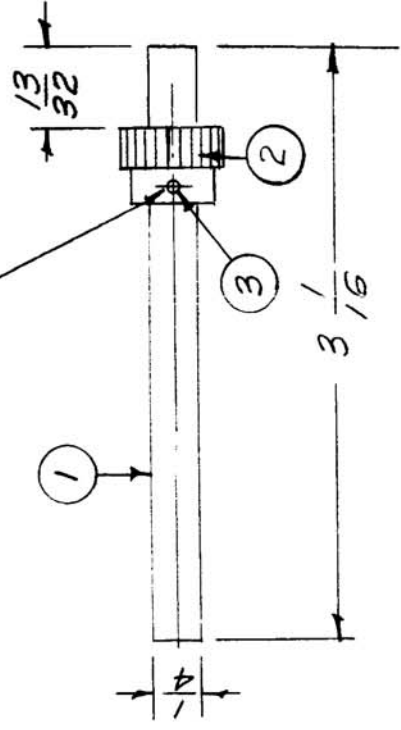
7-19-57

SBE-1

REQ. PER UNIT
1

A-1456 B

Drill thru - No. 52 Dr. (.063)
(Use Gear Pilot Hole)



REQ. ITEM	PART NO.	DESCRIPTION	SYMBOL
1	PN-109-2	Pin, Roll	
1	GR-134	Gear, Spur, 1/24 P.D.	
1	PM-69/RF3.06-B	Shaft, 1/4 D.	
1/4 D. Rod			
BRASS			
FREE TURNING			
TYPE & TEMPER	HEAT TREAT. SPEC.		
MATERIAL			
DRAWN		CHECKED	FINAL APPROVAL
16-7-19-57		ROIP	DM
THE TECHNICAL MATERIEL CORP. MAMARONECK, NEW YORK			
MF DIAL SHAFT ASS'Y.			
SBE-1			
FINISH & SPEC. NO.		ELEC. DES. APP.	MECH. DES. APP.
		OB	A-1456 B

ISSUE ITEM	CHANGED FROM	DATE	CH. NO.	DRAFTS	CHECKER	ENG. APP.
B	ITEM WAS PM-459-3.062-B	7-18-61	5278	6 DL	M.A.F.	
A	Compl. Rev.	12/2/57	1	16	A.S.	

TOLERANCES	
DEC. DIM.	±
FRAC. DIM.	± 1/16
ANGULAR DIM.	±

SCALE: FULL	
MAXIMUM ALLOWABLE TOLERANCES HAVE BEEN DETERMINED AND ANY DEVIATIONS WILL BE CAUSE FOR REJECTION.	1-1145
REMOVE ALL BURRS AND SHARP EDGES	