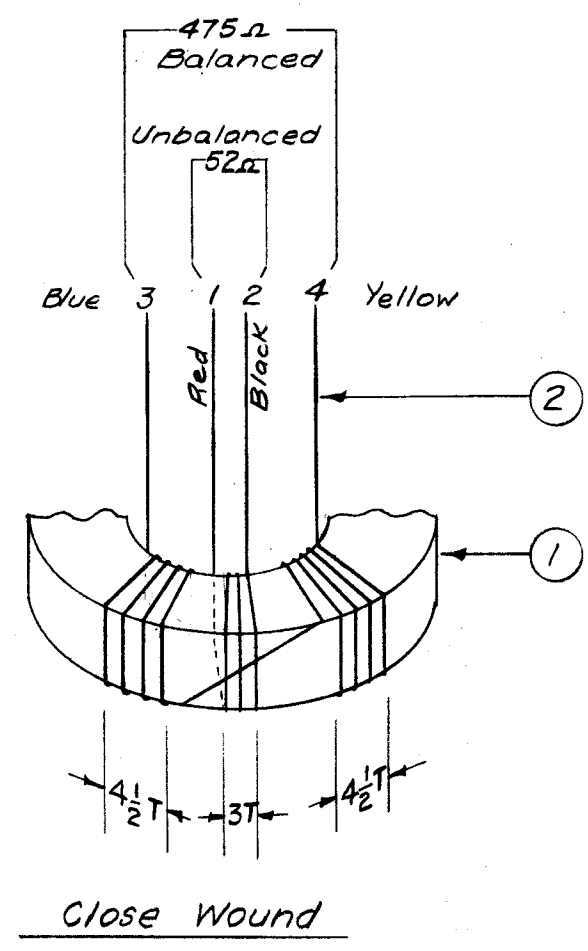
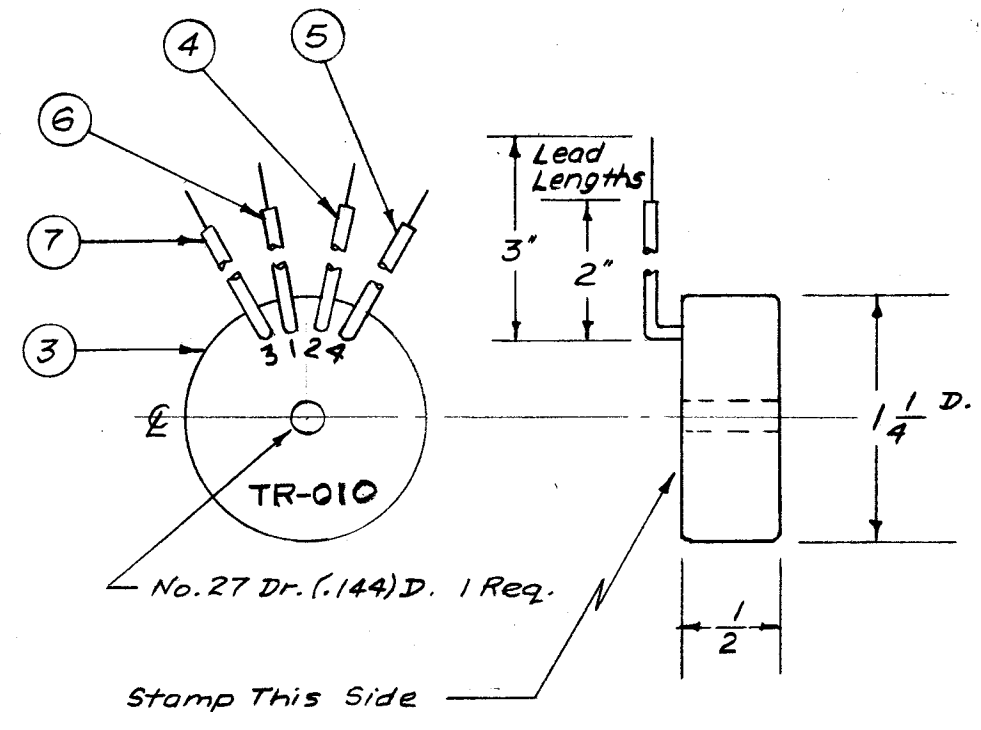


A-1398 A



— Winding Data —

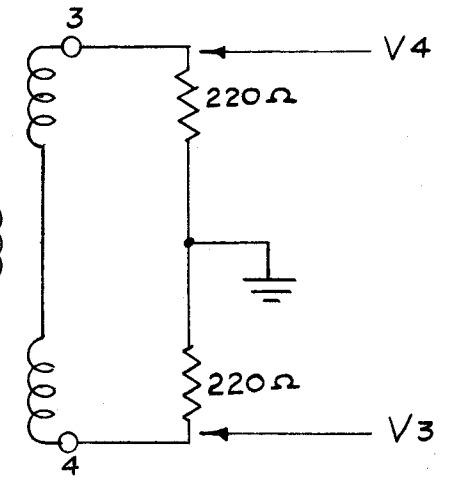
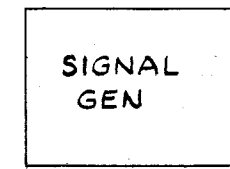


— Assembly —

NOTICE TO PERSONS RECEIVING THIS DRAWING

THE TECHNICAL MATERIEL CORPORATION claims proprietary right in the material disclosed hereon. This drawing is issued in confidence for engineering information only and may not be reproduced or used to manufacture anything shown hereon without permission from THE TECHNICAL MATERIEL CORPORATION to the user. This drawing is loaned for mutual assistance and is subject to recall at any time.

Property of:
THE TECHNICAL MATERIEL CORPORATION
MAMARONECK, NEW YORK



Freq. Mc	V1	V2	V3	V4
2	1.0	.4	.57	.57
8	1.0	.45	.6	.6
30	1.0	.58	.59	.59

Hewlett Packard VTVM

— Test Data —

ISSUE	ITEM	CHANGED FROM	DATE	CH. NO.	DRAFTS	CHECKER	ENG. APP.
A	1	TR-010 was TR-034 (error)	8/12/57	1	file		

TOLERANCES
DEC. DIM. ±
FRAC. DIM. ±
ANGULAR DIM. ±

SCALE:
MAXIMUM ALLOWABLE TOLERANCES HAVE BEEN DETERMINED AND ANY DEVIATIONS WILL BE CAUSE FOR REJECTION. REMOVE ALL BURRS AND SHARP EDGES

**NOT TO BE RELEASED
W/O AUTHORIZATION**

AUTH. BY: _____
DATE: _____

1	DAC-9			3-16-57
REQ. PER UNIT	MODEL	PROJECT NO.	ASS'Y. NO.	DATE
USED ON				

2"	7	PX-104-6-.022	Insulation, Sleeving	Blue
2"	6	PX-104-3-.022	" "	Red
2"	5	PX-104-2-.022	" "	Yellow
2"	4	PX-104-1-.022	" "	Black
X	3	GL-106	Plastic	
X	2	WI-102-9	Wire, No. 30 CEC	
1	1	CI-104	Core	
REQ. ITEM	PART NO.		DESCRIPTION	SYMBOL
//			THE TECHNICAL MATERIEL CORP. MAMARONECK, NEW YORK	
//			COUPLER, ANTENNA	
//			TR-010	
//			MATERIAL	
//			TYPE & TEMPER HEAT TREAT. SPEC.	
//			DRAWN CHECKED	
//			FINISH & SPEC. NO. ELEC. DES. APP. MECH. DES. APP.	

63-15-57
A.T.J.
A-1398 A