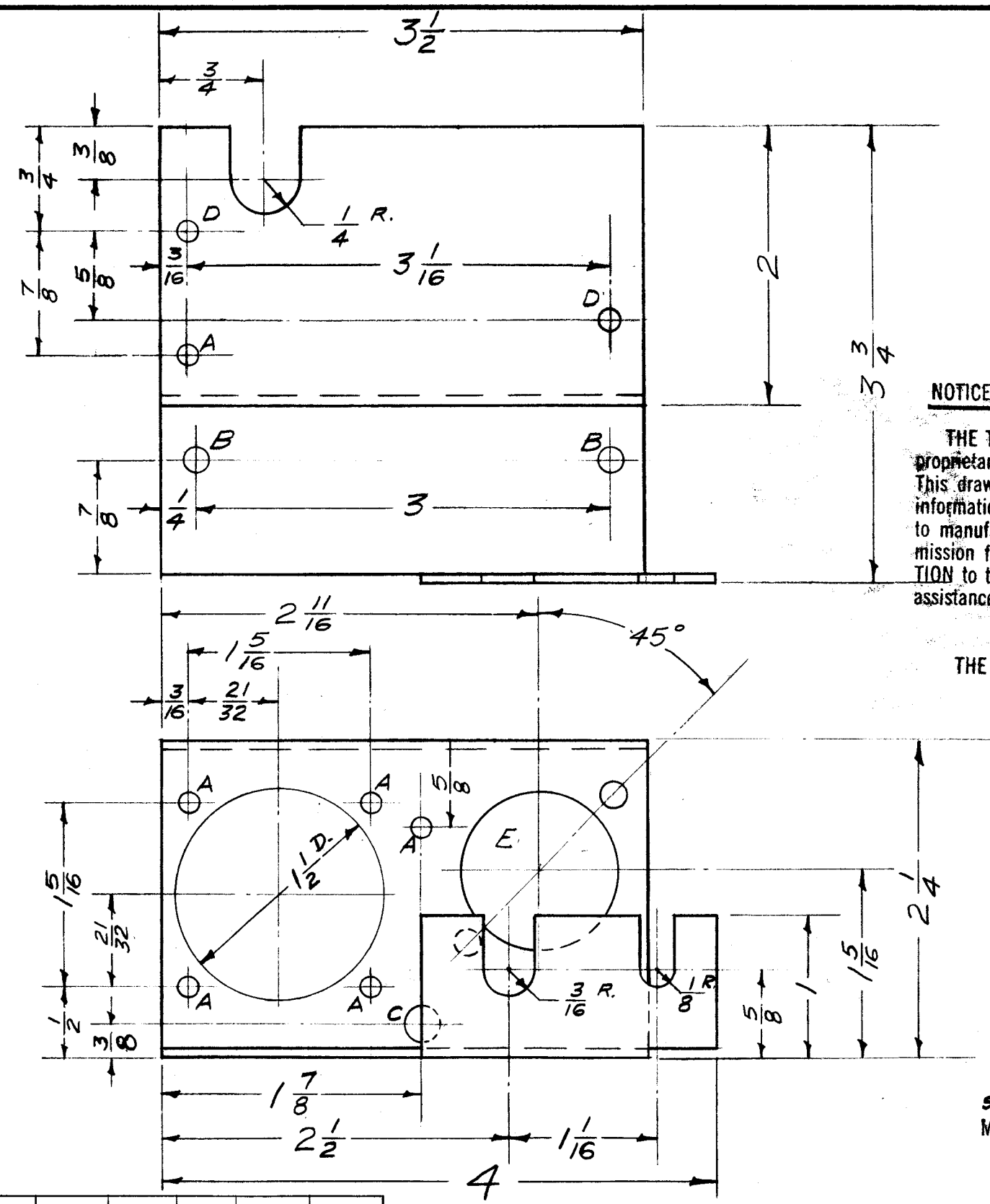
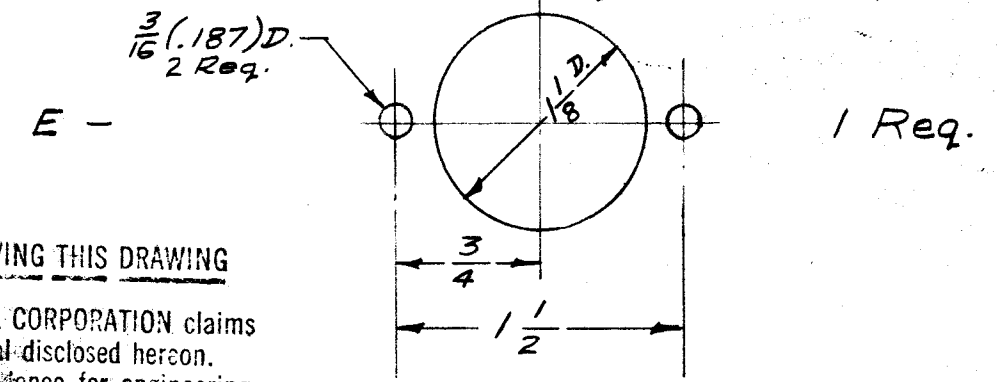


A-1375 C

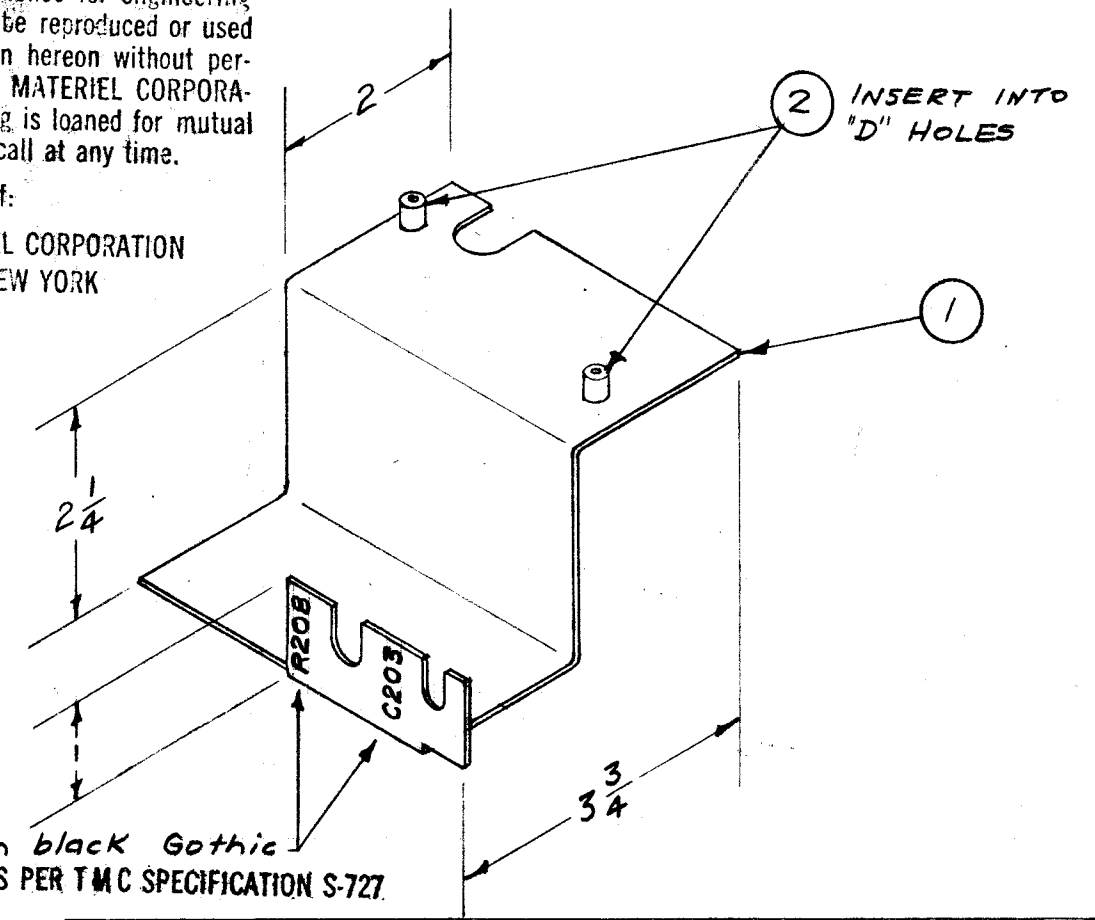


- A -  $\frac{9}{64}$  (.140) D. 5 Req.
- B -  $\frac{11}{64}$  (.171) D. 2 Req.
- C -  $\frac{1}{4}$  (.250) D. 1 Req.
- D - .189 D. 2 Req.



**NOTICE TO PERSONS RECEIVING THIS DRAWING**  
 THE TECHNICAL MATERIEL CORPORATION claims proprietary right in the material disclosed hereon. This drawing is issued in confidence for engineering information only and may not be reproduced or used to manufacture anything shown hereon without permission from THE TECHNICAL MATERIEL CORPORATION to the user. This drawing is loaned for mutual assistance and is subject to recall at any time.

Property of:  
 THE TECHNICAL MATERIEL CORPORATION  
 MAMARONECK, NEW YORK



stamp  $\frac{1}{8}$ " high black Gothic  
 MARKING PROCESS: AS PER TMC SPECIFICATION S-727

ISSUE	ITEM	CHANGED FROM	DATE	CH. NO.	DRAFTS	CHECKER	ENG. APP.
C	1	S-404 WAS S-101	12/10/59	1001	AB		EMN
B	1	STAMPING ADDED	3-15-57	2	GL.	16.	AW
A	1	WAS MS-1017 - MADE INTO ASS'Y.	2/8/57	1	16		AW

TOLERANCES		SCALE:
DEC. DIM. $\pm$		MAXIMUM ALLOWABLE TOLERANCES HAVE BEEN DETERMINED AND ANY DEVIATIONS WILL BE CAUSE FOR REJECTION. REMOVE ALL BURRS AND SHARP EDGES
FRAC. DIM. $\pm$		
ANGULAR DIM. $\pm$		

REQ. PER UNIT	MODEL	PROJECT NO.	ASS'Y. NO.	DATE
1	TTU	638		1-22-57

REQ.	ITEM	PART NO.	DESCRIPTION	SYMBOL
2	2	TE-108-1	STAND OFF, RIVET TYPE	
1	1	MS-1017	BRACKET MOUNTING	(ND)
		.064 THK.	THE TECHNICAL MATERIEL CORP. MAMARONECK, NEW YORK	
		ALUMINUM	BRACKET MOUNTING ASSEMBLY WITH STAMPING. MODEL TTU.	
		5052-H32	16-22-57	AW
		S404 YELLOW IRIDITE	AW	AW
			AW	AW

USED ON

A-1375 C